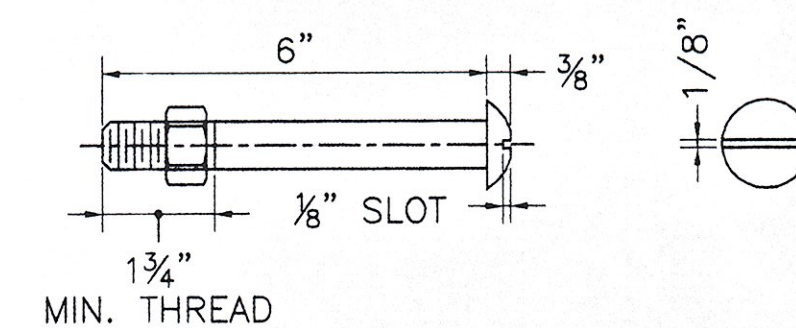
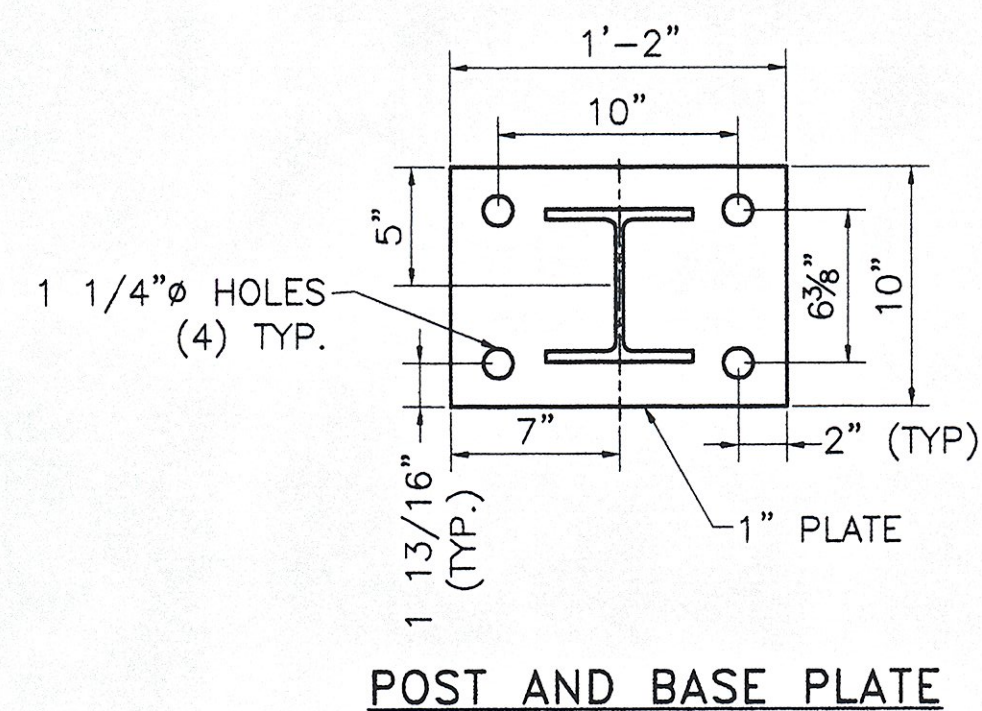
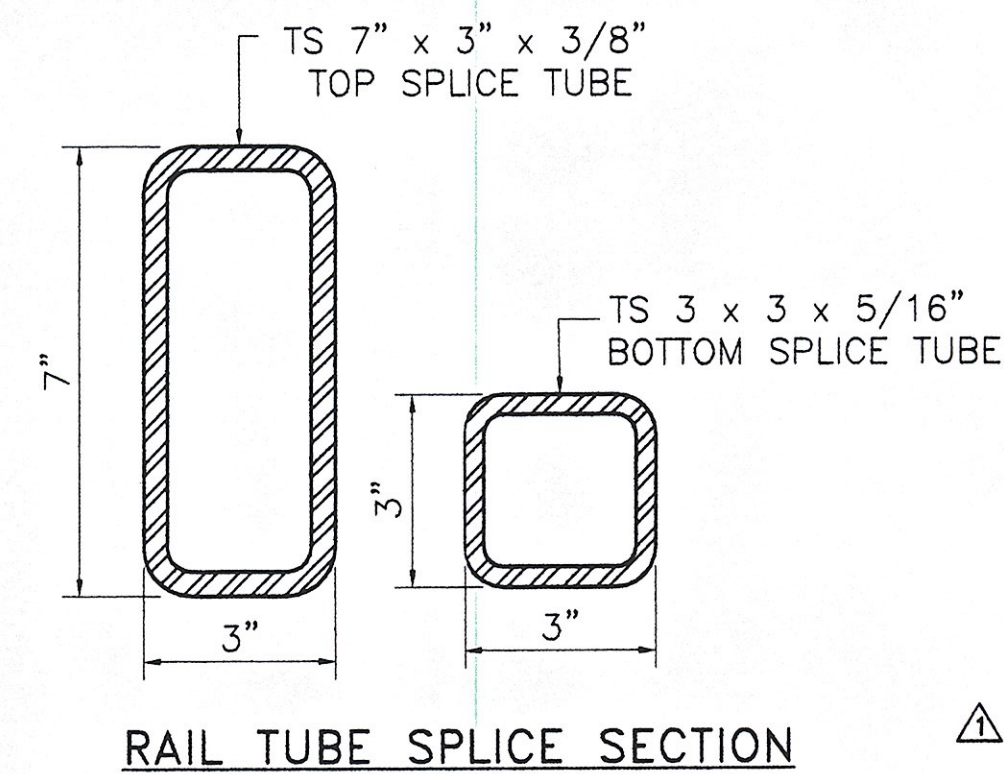
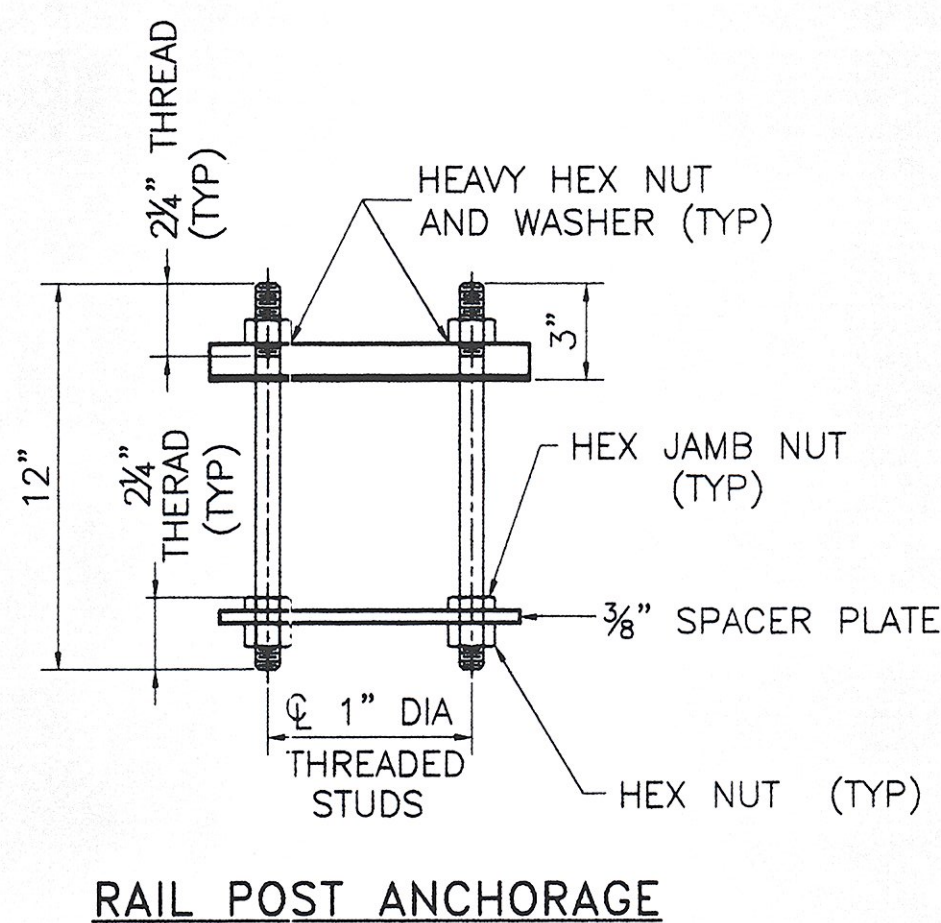
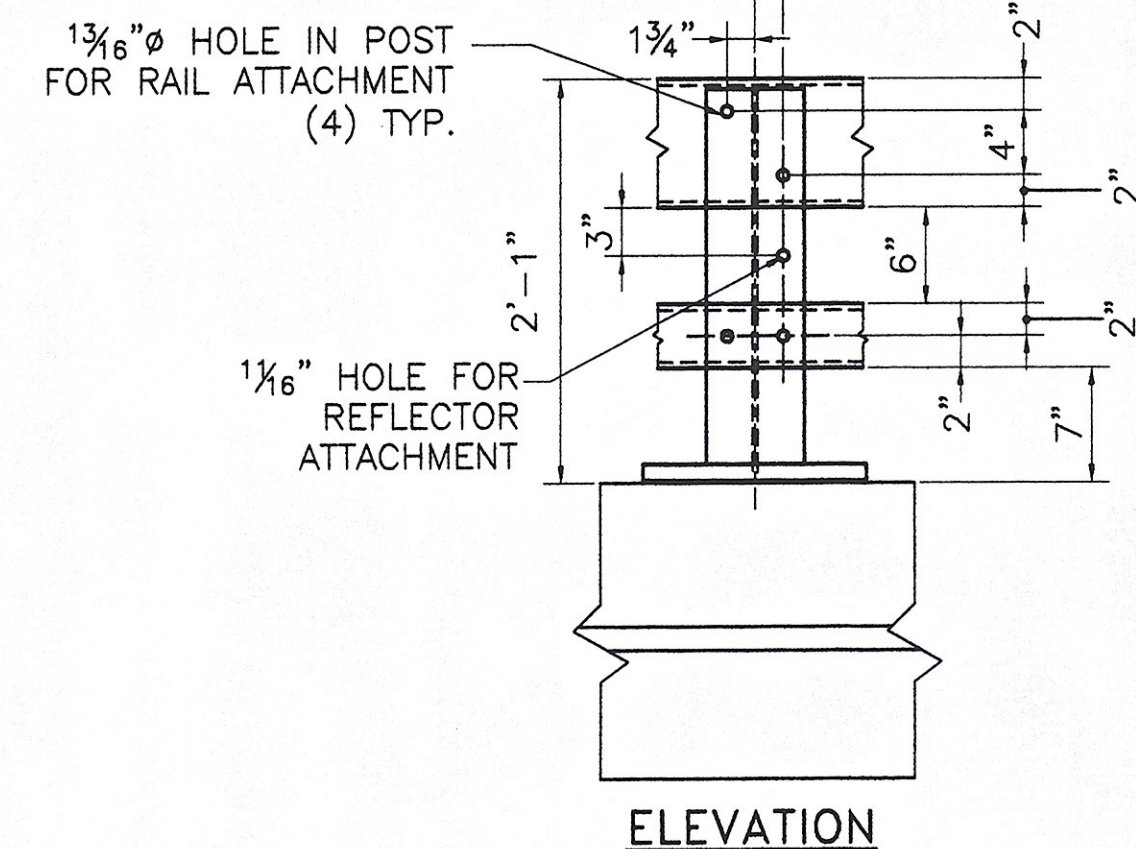
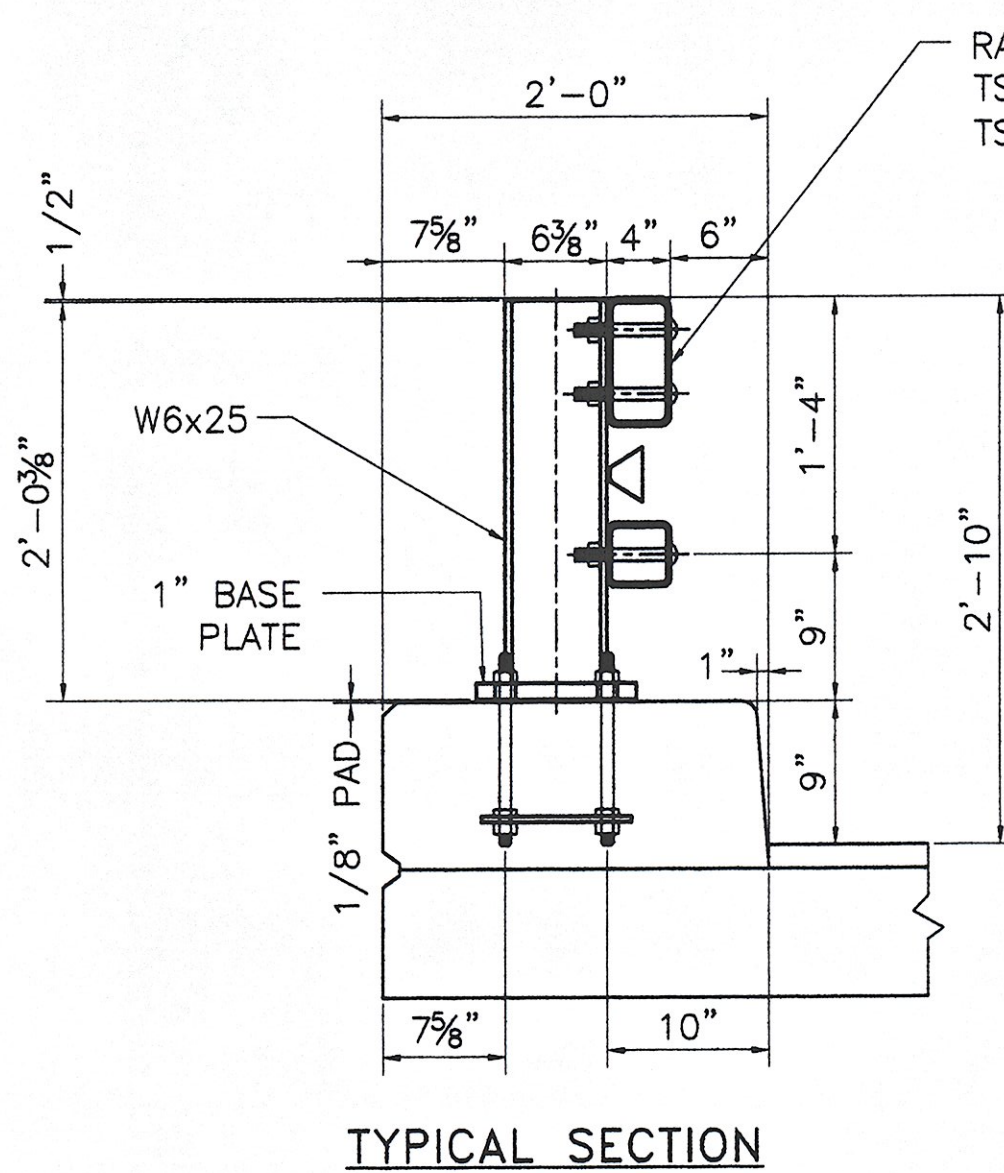
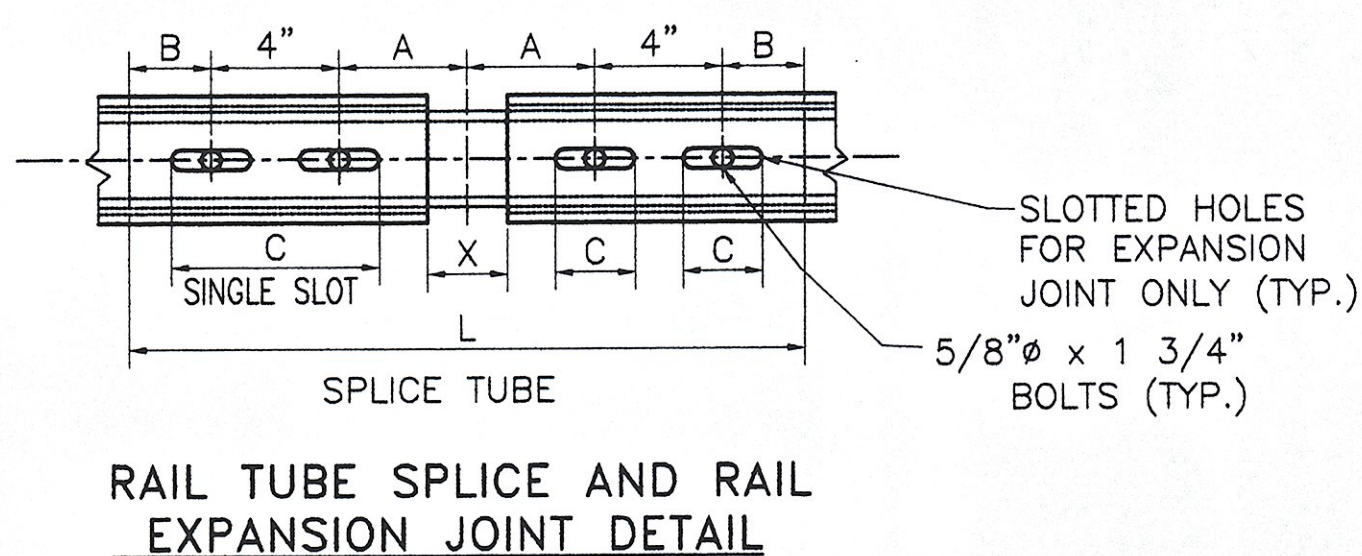
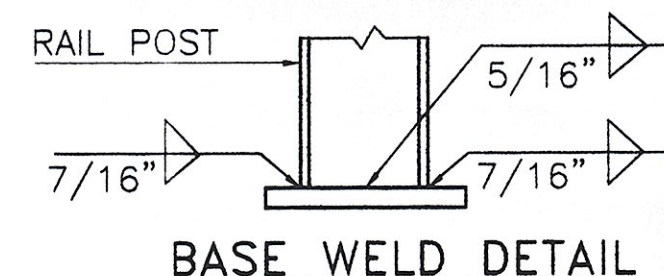
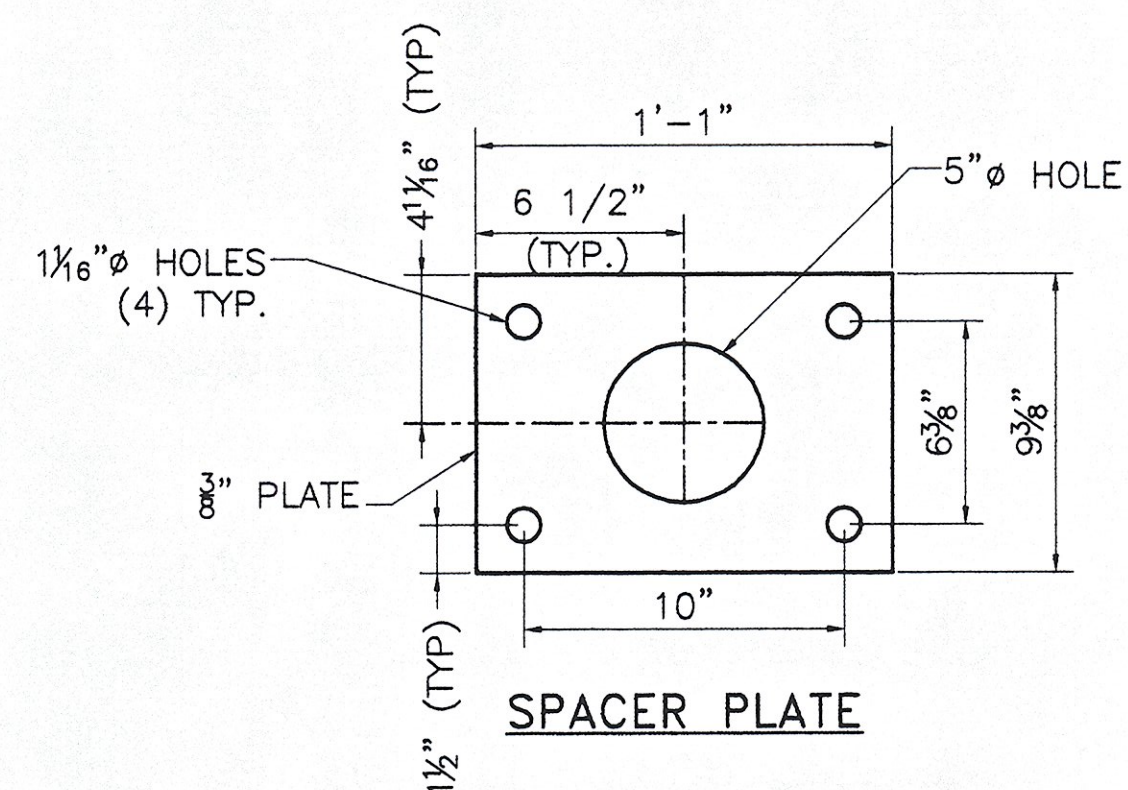


FOR DETAILS NOT SHOWN, SEE "RAIL TUBE SPLICE SECTION."



(WITH WASHER AND PREVAILING TORQUE TYPE LOCK NUT) (SEE NOTE #8) ONLY FULL DIAMETER BODY BOLTS WILL BE ALLOWED.



SPLICE TABLE					
T	A	B	C	L	X
N/A	4"	2"	--	20"	3/4"
EXPANSION JOINT TABLE					
<4"	4"	2"	2 1/2"	20"	2 1/2"

T = TOTAL MOVEMENT BETWEEN BRIDGE EXPANSION JOINTS. SEE NOTE #5

* = SINGLE SLOT

NOTES:

- ALL RAILINGS AND MATERIALS SHALL CONFORM TO THE PROVISION OF SECTION 525, "RAILINGS OF THE STANDARD SPECIFICATION FOR CONSTRUCTION".
- PRIOR TO GALVANIZING, ALL EXPOSED CUT OR SHEARED EDGES SHALL BE ROUNDED TO A 1/16" RADIUS AND BE FREE OF BURRS.
- RAIL POSTS SHALL BE SET NORMAL TO GRADE.
- SECTIONS OF RAIL TUBE SHALL BE ATTACHED TO A MINIMUM OF TWO (2) RAIL POSTS AND PREFERABLY TO AT LEAST FOUR (4) POSTS.
- RAIL TUBE EXPANSION JOINT SHALL BE PROVIDED IN ANY RAIL BAY SPANNING A SUPERSTRUCTURE EXPANSION JOINT. EXPANSION JOINT WIDTH SHALL BE "X" AT 45°F AND WILL BE ADJUSTED IN THE FIELD BY THE ENGINEER FOR OTHER TEMPERATURES.
- ALL PARTS SHALL BE GALVANIZED AFTER FABRICATION IN ACCORDANCE WITH AASHTO M111, EXCEPT HARDWARE, WHICH SHALL MEET THE REQUIREMENTS OF AASHTO M232.
- RAIL POST ANCHORING NUTS SHALL BE TIGHTENED TO A SNUG FIT AND GIVEN AN ADDITIONAL ONE-EIGHTH TURN.
- RAIL TUBES SHALL BE ATTACHED USING 3/4" FULL DIAMETER BODY AASHTO M164 (TYPE 1) ROUND HEAD BOLT INSERTED THROUGH THE FACE OF THE TUBE. HOLES IN POSTS SHALL BE 1/16" LARGER THAN THE BOLT SIZE.
- HOLES IN RAILS FOR RAIL TUBE ATTACHMENT MAY BE FIELD-DRILLED. HOLES SHALL BE COATED WITH AN APPROVED ZINC-RICH PAINT PRIOR TO ERECTION.
- IF THERE IS A CONFLICT BETWEEN THE DETAILS SHOWN ON THIS SHEET AND THE DESIGN, THE REQUIREMENTS OF THE DESIGN DRAWINGS SHALL BE FOLLOWED.
- ANY BENDING OF RAIL SHALL BE BY SHOP PROCEDURE ONLY.
- THE FABRICATOR SHALL SUBMIT SHOP DRAWINGS, INCLUDING WELDING PROCEDURES TO THE STRUCTURES SECTION FOR APPROVAL IN ACCORDANCE WITH SUBSECTION 506.04 OF THE STANDARD SPECIFICATIONS. ALL WELDING SHALL CONFORM WITH SUBSECTION 506.10.
- RAIL POSTS AND BASE PLATES SHALL BE TESTED FOR IMPACT PROPERTIES IN ACCORDANCE WITH ASTM A-370 CHARPY IMPACT TESTING USING TYPE A SPECIMEN
- EXPANSION JOINT HARDWARE, REFLECTORS AND REFLECTOR HARDWARE PROVIDED BY OTHERS.

MATERIALS

RAIL TUBES.....ASTM A500, GRADE B OR ASTM A501

RAIL POSTS AND BASE PLATES.....ASTM A709/A709M, GRADE 50

ALL OTHER SHAPES AND PLATES.....ASTM A709/A709M, GRADE 36

ANCHOR STUDS.....ASTM A449

ALL OTHER BOLTS (UNLESS NOTED).....AASHTO M164, TYPE1

NUTS FOR AASHTO M164 BOLTS AND FOR ANCHOR STUDS SHALL COMPLY WITH AASHTO M291 (ASTM A563).

WASHERS SHALL COMPLY WITH AASHTO M293 (ASTM F436) SPECIFICATIONS.

1/8" PAD SHALL COMPLY WITH STANDARD SPECIFICATION SUBSECTION 731.01 OR 731.02.

RECEIVED
 OK'D BY
 SEP 23 2008
 APPROVED, As Noted
 DATE 9/23/08



HIGHWAY SAFETY CORP.
 GLASTONBURY, CT

ITEM 525.33 - BRIDGE RAILING-NETC 2 RAIL
 PROJECT No. (STP)BRF 013-4(21)
 VT. ROUTE 100 (MINOR ARTERIAL)
 TOWN OF STOCKBRIDGE, VERMONT

GENERAL CONTRACTOR
 SUB CONTRACTOR A.D. ROSSI

1665

2 of 2

REVISIONS		
No.	Remarks	Date
0	Initial submittal	8/22/08
1	Per VT DOT Comments	9/16/08