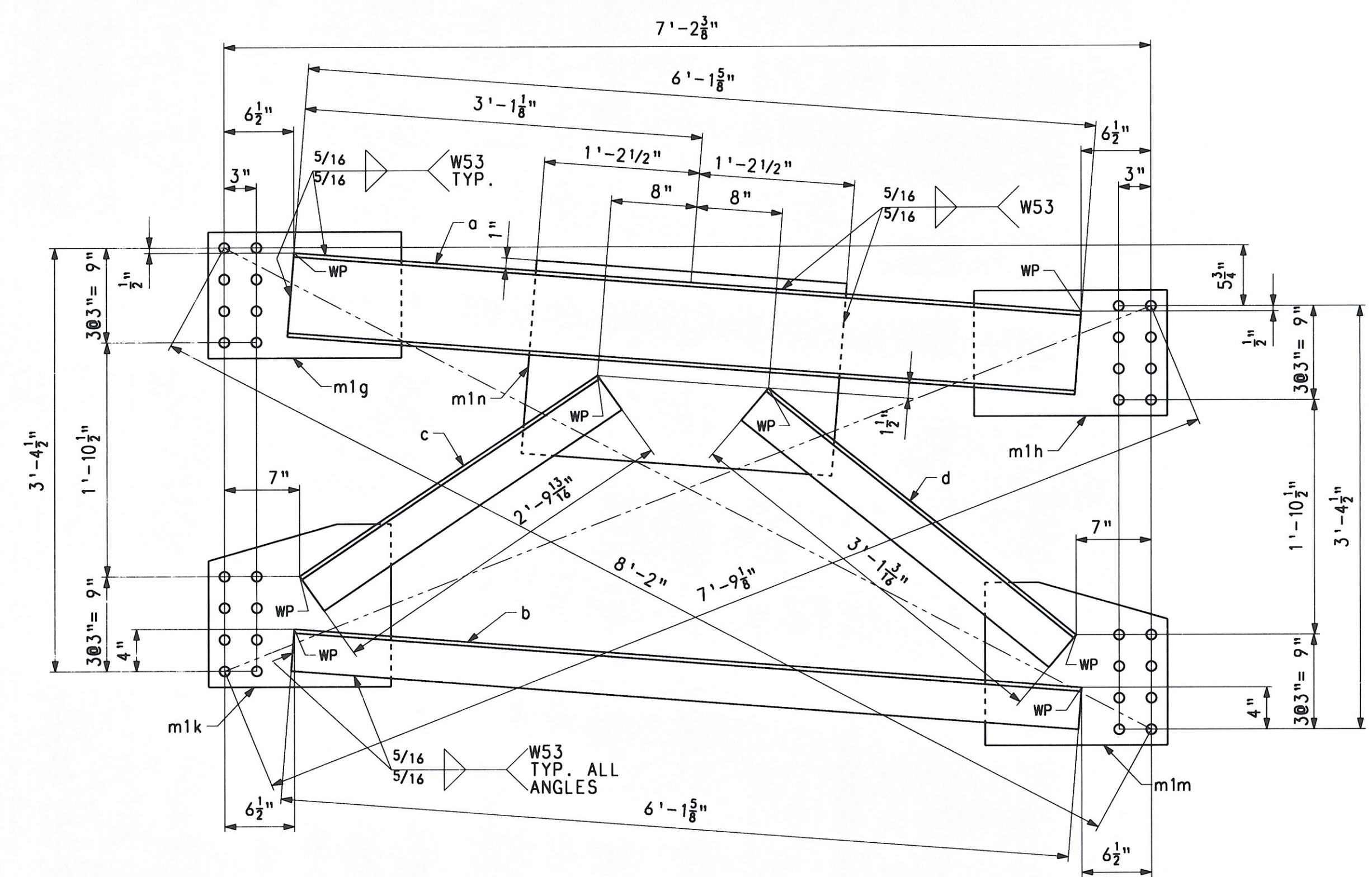


DRAWING NO. 5004328 PROJECT: 5004328

SHIPMENT 1

PLOT DATE: 06/25/08 16:13:17 BY: SLOWING



CROSSFRAME - MK, CF 13

BILL OF MATERIAL

QTY	MARK	COMMODITY	DESCRIPTION	LENGTH	SPEC	GRADE	TEST	REMARKS	ITEM	GROSS WEIGHT EA.	DEDUCTED WEIGHT EA.	NET WEIGHT EA.
CROSSFRAME										444.22	0.00	444.22
1	a	C	B x 18.75	6	1 5/8	M270	50W	T	11001	115.04	0.00	115.04
1	b	L	4 x 4 x 3/8	6	1 5/8	M270	50W	T	11002	59.64	0.00	59.64
1	c	L	4 x 4 x 3/8	2	9 13/16	M270	50W	T	11002	27.39	0.00	27.39
1	d	L	4 x 4 x 3/8	3	1 3/16	M270	50W	T	11002	30.12	0.00	30.12
1	m1g	PL	1/2 x 12	1	6	M270	50W	T	11003	30.62	0.00	30.62
1	m1h	PL	1/2 x 12	1	6	M270	50W	T	11003	30.62	0.00	30.62
1	m1k	PL	1/2 x 15 1/2	1	5	M270	50W	T	11003	37.36	0.00	37.36
1	m1m	PL	1/2 x 15 1/2	1	5	M270	50W	T	11003	37.36	0.00	37.36
1	m1n	PL	1/2 x 18 1/2	2	5	M270	50W	T	11003	76.07	0.00	76.07
TOTAL WEIGHT THIS SHEET:										444.22		LBS.

RECEIVED
 OK'D BY JEL OK'D BY JEL
 AUG 18 2008
 RESUBMIT APPROVED
 BY KmH DATE 8/19/08

FOR GENERAL SHOP NOTES, SEE DWG. GN1.

NO.	REVISION	BY	CHK'D	DATE
CROSSFRAME CF 13 VT ROUTE 100 (MINOR ARTERIAL) OVER WHITE RIVER VT ROUTE 100 STA. 141+39.00 TO STA. 143+61.00 TOWN OF STOCKBRIDGE, COUNTY OF WINDSOR, VERMONT STATE OF VERMONT AGENCY OF TRANSPORTATION				
STATE CONT. OR REF. NO.		PROJ. NO. (STP) BR 013-4(211)	FED. AID PROJ. NO.	
SCALE N.T.S.		GENERAL CONTRACTOR WINTERSSET, INC.	HSSI PROJ. MGR DEB KUPRES	
SHIPMT 1	DRAWING MANAGER KREIDER (IH)	MADE BY SSL	CHK'D BY CS	DATE 6-19-08
STATE VT	HSSI PROJECT NUMBER S-1080077	HSSI STRUCT. ID A	DRAWING NUMBER 22 OF 22	