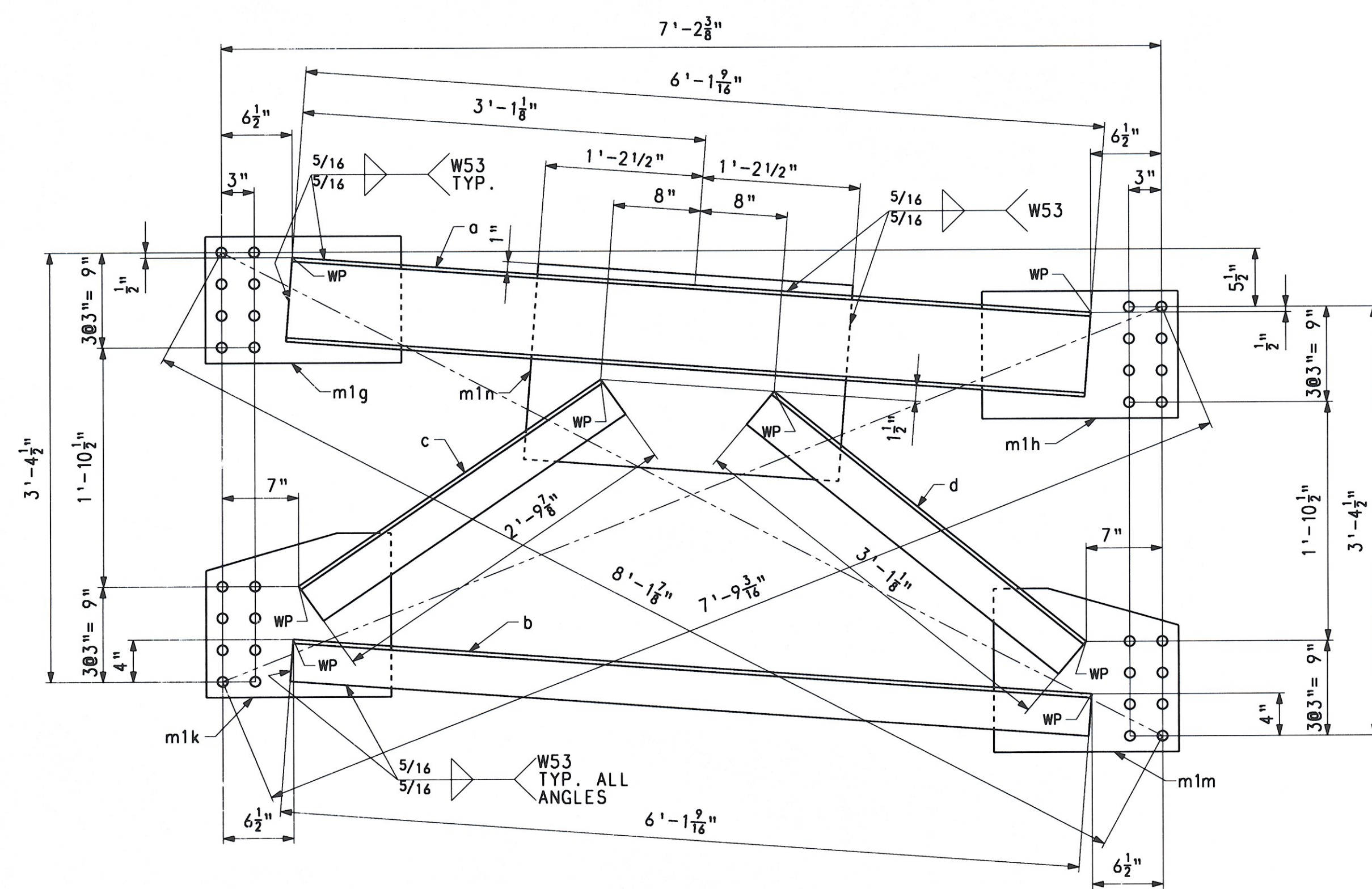


CROSSFRAME - MK, CF 11



CROSSFRAME - MK, CF 12

BILL OF MATERIAL

QTY	MARK	COMMODITY	DESCRIPTION	LENGTH	SPEC	GRADE	TEST	REMARKS	ITEM	GROSS WEIGHT EA.	DEDUCTED WEIGHT EA.	NET WEIGHT EA.
CROSSFRAME										438.06	0.00	438.06
1	CF 11	C	8 x 18.75	5	11 9/16	M270	50W	T	11001	111.82	0.00	111.82
1	a	L	4 x 4	3/8	5 11 9/16	M270	50W	T	11002	57.97	0.00	57.97
1	b	L	4 x 4	3/8	2 9 1/16	M270	50W	T	11002	26.78	0.00	26.78
1	c	L	4 x 4	3/8	3 0 3/8	M270	50W	T	11002	29.46	0.00	29.46
1	d	L	4 x 4	3/8	3 0 3/8	M270	50W	T	11002	29.46	0.00	29.46
1	mlg	PL	1/2 x 12	1	6	M270	50W	T	11003	30.62	0.00	30.62
1	mlh	PL	1/2 x 12	1	6	M270	50W	T	11003	30.62	0.00	30.62
1	mlk	PL	1/2 x 15 1/2	1	5	M270	50W	T	11003	37.36	0.00	37.36
1	mlm	PL	1/2 x 15 1/2	1	5	M270	50W	T	11003	37.36	0.00	37.36
1	mln	PL	1/2 x 18 1/2	2	5	M270	50W	T	11003	76.07	0.00	76.07
CROSSFRAME										444.07	0.00	444.07
1	CF 12	C	8 x 18.75	6	1 9/16	M270	50W	T	11001	114.94	0.00	114.94
1	a	L	4 x 4	3/8	6 1 9/16	M270	50W	T	11002	59.59	0.00	59.59
1	b	L	4 x 4	3/8	2 9 7/8	M270	50W	T	11002	27.44	0.00	27.44
1	c	L	4 x 4	3/8	3 1 1/8	M270	50W	T	11002	30.07	0.00	30.07
1	d	L	4 x 4	3/8	3 1 1/8	M270	50W	T	11002	30.07	0.00	30.07
1	mlg	PL	1/2 x 12	1	6	M270	50W	T	11003	30.62	0.00	30.62
1	mlh	PL	1/2 x 12	1	6	M270	50W	T	11003	30.62	0.00	30.62
1	mlk	PL	1/2 x 15 1/2	1	5	M270	50W	T	11003	37.36	0.00	37.36
1	mlm	PL	1/2 x 15 1/2	1	5	M270	50W	T	11003	37.36	0.00	37.36
1	mln	PL	1/2 x 18 1/2	2	5	M270	50W	T	11003	76.07	0.00	76.07

TOTAL WEIGHT THIS SHEET:

882.13 LBS.

RECEIVED  
 OK'D BY: [Signature] OK'D BY: [Signature]  
 AUG 18 2008  
 RESUBMIT APPROVED  
 BY: kmh DATE 8/19/08

FOR GENERAL SHOP NOTES, SEE DWG. GN1.

NO.	REVISION	BY	CHK'D	DATE
HOLES: 15/16" Ø BOLTS: NONE COATING: NONE CODE(S): 63				
STATE OF VERMONT AGENCY OF TRANSPORTATION STATE CONT. OR REF. NO.: PROJ. NO. (STP)BRF 013-4(21) SCALE: N.T.S. SHPMT: 1 STATE: VT				
VT ROUTE 100 (MINOR ARTERIAL) OVER WHITE RIVER VT ROUTE 100 STA. 141+39.00 TO STA. 143+61.00 TOWN OF STOCKBRIDGE, COUNTY OF WINDSOR, VERMONT GENERAL CONTRACTOR: WINTERSET, INC. HSSI PROJ. MGR: DEB KUPRES MADE BY: KREIDER (IH) HSSI STRUC. ID: S-1080077 DATE: 6-19-08 DRAWING NUMBER: 21 OF 22				