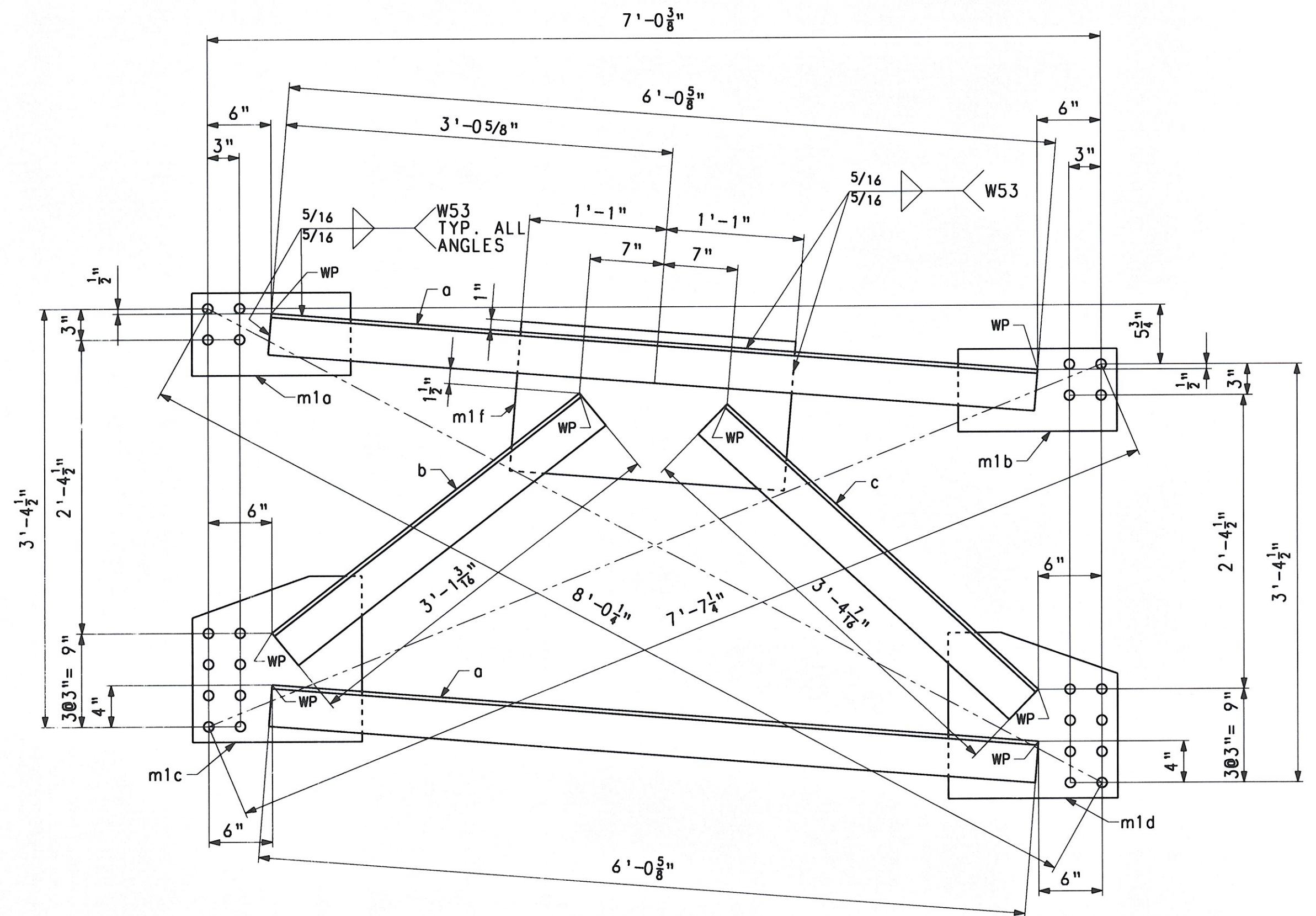
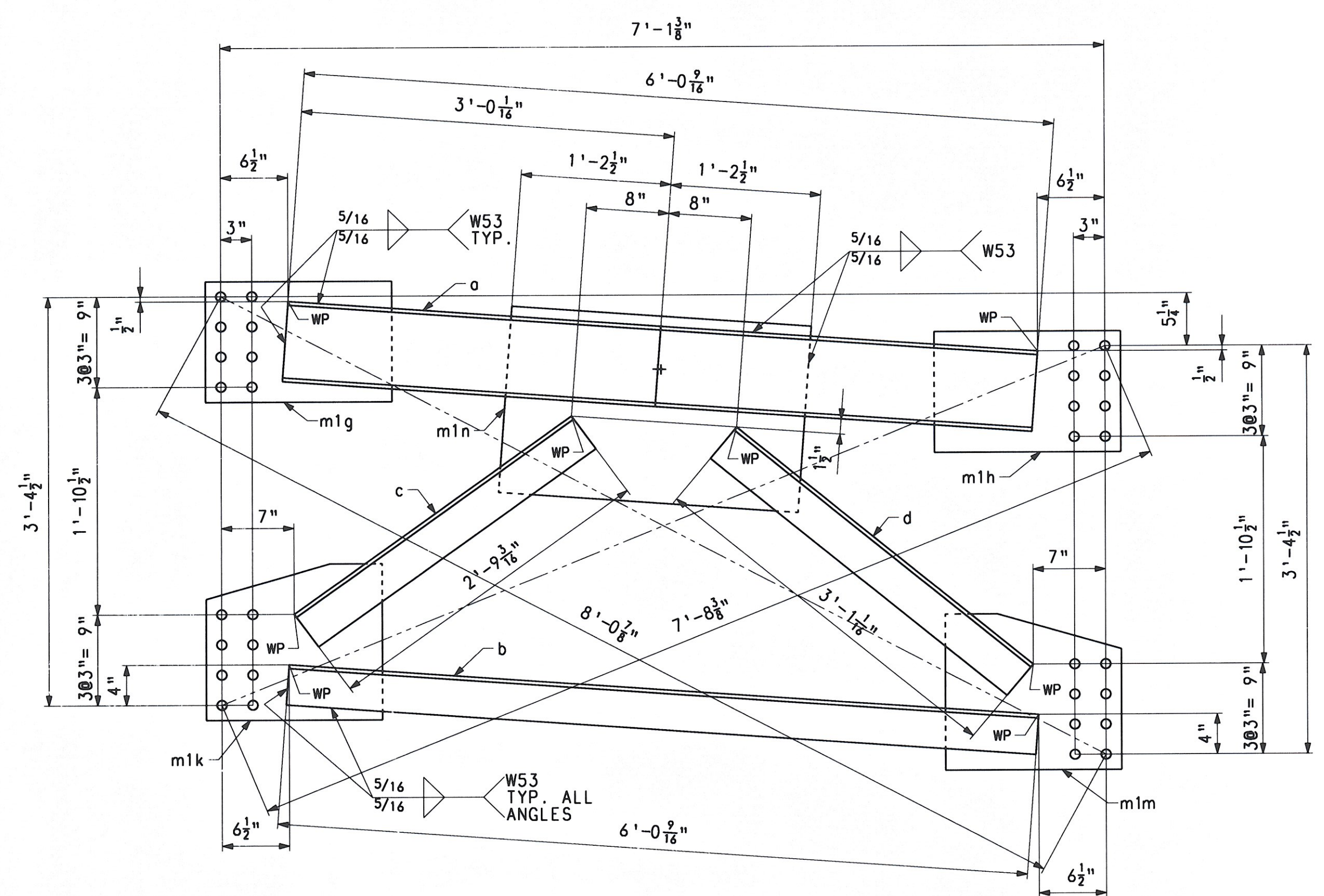


SHIPMENT 1 PMEN6: 5004327 PRD: 5004328 SHIPPERECT: 5004329

PLOTTED: 06/25/08 16:12:54 BY: S.Loufeng



CROSSFRAME - MK. CF9



CROSSFRAME - MK. CF10

BILL OF MATERIAL

QTY	MARK	COMMODITY	DESCRIPTION	LENGTH	SPEC	GRADE	TEST	REMARKS	ITEM	GROSS WEIGHT EA.	DEDUCTED WEIGHT EA.	NET WEIGHT EA.
CROSSFRAME										341.74	0.00	341.74
1	CF9											
2	a	L	4 x 4 x 3/8	6 0 5/8	M270	50W	T		11002	58.83	0.00	58.83
1	b	L	4 x 4 x 3/8	3 1 3/16	M270	50W	T		11002	30.12	0.00	30.12
1	c	L	4 x 4 x 3/8	4 7/16	M270	50W	T		11002	32.75	0.00	32.75
1	m1a	PL	1/2 x 8	3 1/2	M270	50W	T		11003	17.58	0.00	17.58
1	m1b	PL	1/2 x 8	3 1/2	M270	50W	T		11003	17.58	0.00	17.58
1	m1c	PL	1/2 x 16	4	M270	50W	T		11003	36.30	0.00	36.30
1	m1d	PL	1/2 x 16	4	M270	50W	T		11003	36.30	0.00	36.30
1	m1f	PL	1/2 x 14 1/2	2	M270	50W	T		11003	53.45	0.00	53.45
CROSSFRAME										441.09	0.00	441.09
1	CF10											
1	a	C	8 x 18.75	6 0 9/16	M270	50W	T		11001	113.38	0.00	113.38
1	b	L	4 x 4 x 3/8	6 0 9/16	M270	50W	T		11002	58.78	0.00	58.78
1	c	L	4 x 4 x 3/8	2 9 3/16	M270	50W	T		11002	26.88	0.00	26.88
1	d	L	4 x 4 x 3/8	3 1 1/16	M270	50W	T		11002	30.02	0.00	30.02
1	m1g	PL	1/2 x 12	6	M270	50W	T		11003	30.62	0.00	30.62
1	m1h	PL	1/2 x 12	6	M270	50W	T		11003	30.62	0.00	30.62
1	m1k	PL	1/2 x 15 1/2	5	M270	50W	T		11003	37.36	0.00	37.36
1	m1m	PL	1/2 x 15 1/2	5	M270	50W	T		11003	37.36	0.00	37.36
1	m1n	PL	1/2 x 18 1/2	2	M270	50W	T		11003	76.07	0.00	76.07
TOTAL WEIGHT THIS SHEET:										782.83		LBS.

RECEIVED  
 CK'D BY: J.S. OK'D BY: J.S.L.  
 AUG 13 2008  
 RESUBMIT APPROVED  
 BY: KmH DATE 8/19/08

FOR GENERAL SHOP NOTES, SEE DWG. GN1.

NO.	REVISION	BY	CHK'D	DATE
CROSSFRAMES CF9 & CF10 VT ROUTE 100 (MINOR ARTERIAL) OVER WHITE RIVER VT ROUTE 100 STA. 141+39.00 TO STA. 143+61.00 TOWN OF STOCKBRIDGE, COUNTY OF WINDSOR, VERMONT STATE OF VERMONT AGENCY OF TRANSPORTATION				
STATE CONT. OR REF. NO.	PROJ. NO. (STP)BRF 013-4(21)	FED. AID PROJ. NO.		
SCALE	N.T.S.	GENERAL CONTRACTOR	WINTerset, INC.	HSSI PROJ. MGR
SH-PMT	1	DRAWING MANAGER	KREIDER (1H)	MADE BY
STATE	VT	HSSI PROJECT NUMBER	S-1080077	HSSI STRUCT. ID
		CHK'D BY	CS	DATE
				6-19-08
				20 OF 22