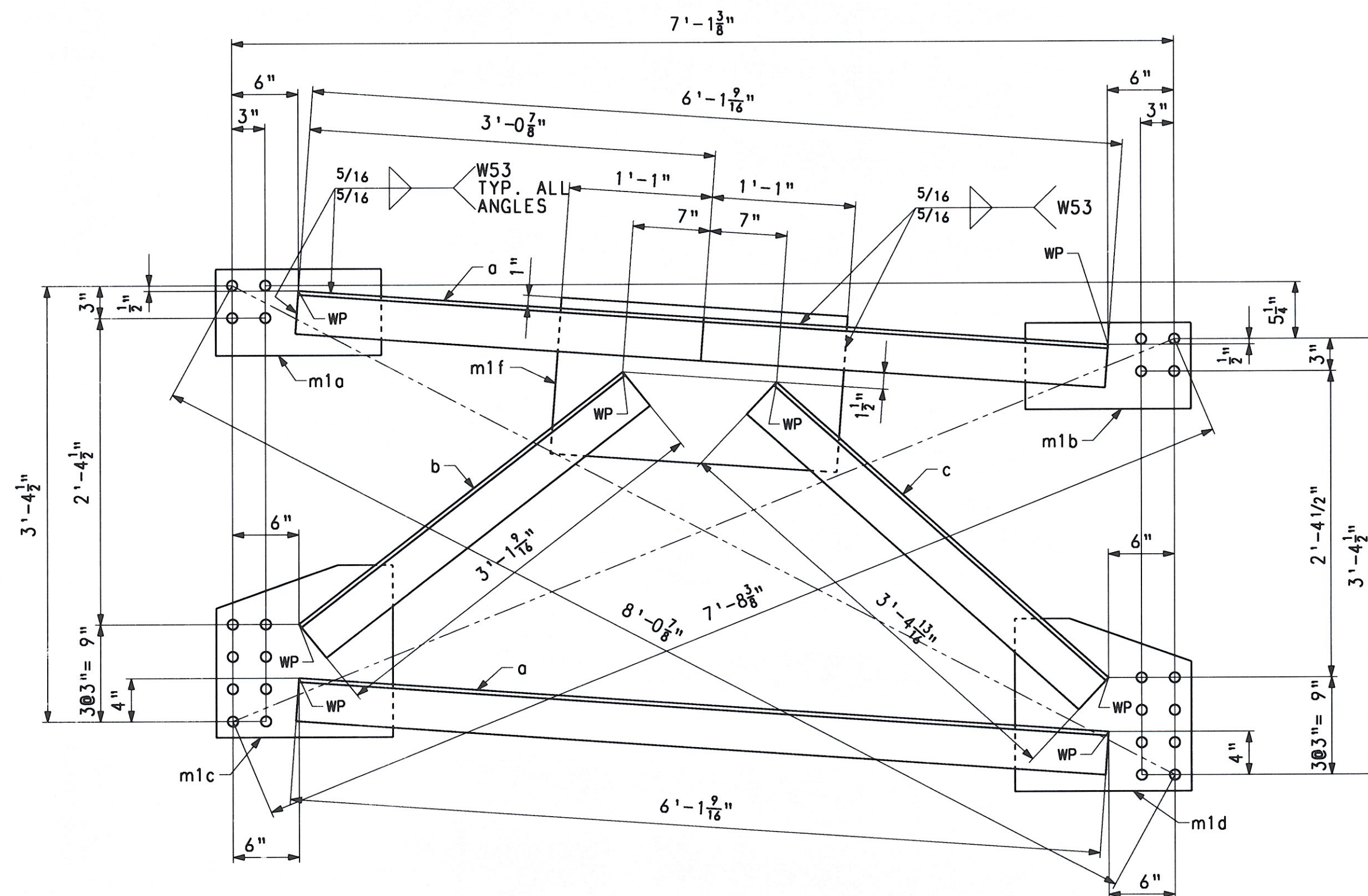
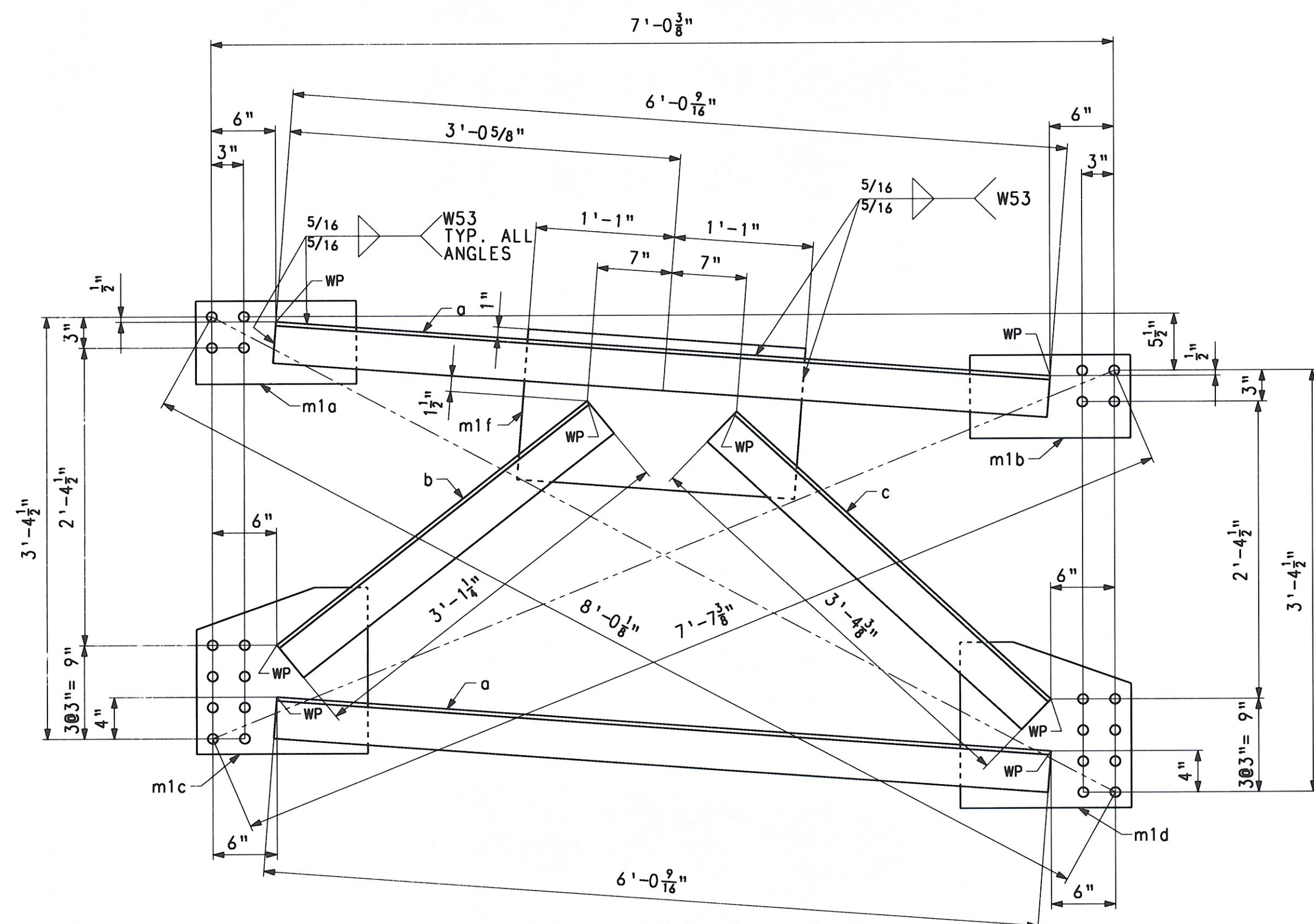


SHIPMENT 1 PAKING: 500432Z PART: 5004326 SHIP&RECT: 5004324

PLOTTED: 06/25/08 16:17:15 BY: Sclaudeing



CROSSFRAME - MK. CF5



CROSSFRAME - MK. CF6

BILL OF MATERIAL

QTY	MARK	COMMODITY	DESCRIPTION	LENGTH	SPEC	GRADE	TEST	REMARKS	ITEM	GROSS WEIGHT EA.	DEDUCTED WEIGHT EA.	NET WEIGHT EA.
CROSSFRAMES										343.86	0.00	343.86
13	CF5											
2	a	L	4 x 4 x 3/8	6	1 9/16	M270	50W	T	11002	58.59	0.00	58.59
1	b	L	4 x 4 x 3/8	3	1 9/16	M270	50W	T	11002	30.43	0.00	30.43
1	c	L	4 x 4 x 3/8	3	4 13/16	M270	50W	T	11002	33.06	0.00	33.06
1	m1a	PL	1/2 x 8	1	3 1/2	M270	50W	T	11003	17.58	0.00	17.58
1	m1b	PL	1/2 x 8	1	3 1/2	M270	50W	T	11003	17.58	0.00	17.58
1	m1c	PL	1/2 x 16	1	4	M270	50W	T	11003	36.30	0.00	36.30
1	m1d	PL	1/2 x 16	1	4	M270	50W	T	11003	36.30	0.00	36.30
1	m1f	PL	1/2 x 14 1/2	2	2	M270	50W	T	11003	53.45	0.00	53.45
CROSSFRAMES										341.63	0.00	341.63
12	CF6											
2	a	L	4 x 4 x 3/8	6	0 9/16	M270	50W	T	11002	58.78	0.00	58.78
1	b	L	4 x 4 x 3/8	3	1 1/4	M270	50W	T	11002	30.17	0.00	30.17
1	c	L	4 x 4 x 3/8	3	4 3/8	M270	50W	T	11002	32.70	0.00	32.70
1	m1a	PL	1/2 x 8	1	3 1/2	M270	50W	T	11003	17.58	0.00	17.58
1	m1b	PL	1/2 x 8	1	3 1/2	M270	50W	T	11003	17.58	0.00	17.58
1	m1c	PL	1/2 x 16	1	4	M270	50W	T	11003	36.30	0.00	36.30
1	m1d	PL	1/2 x 16	1	4	M270	50W	T	11003	36.30	0.00	36.30
1	m1f	PL	1/2 x 14 1/2	2	2	M270	50W	T	11003	53.45	0.00	53.45
TOTAL WEIGHT THIS SHEET:										8569.8		LBS.

RECEIVED  
 OK'D BY: [Signature] OK'D BY: [Signature]  
 AUG 18 2008  
 RESUBMIT APPROVED  
 BY: kmh DATE 8/19/08

FOR GENERAL SHOP NOTES, SEE DWG. GN1.

NO.	REVISION	BY	CHK'D	DATE
HOLES	15/16" Ø	HIGH STEEL STRUCTURES INC. An ISO 9001:2000 Certified Company. 1815 Old Philadelphia Pike Lancaster, PA 17605-0008 Phone (717) 299-5211 www.highsteel.com		
BOLTS	NONE	CROSSFRAMES CF5 & CF6		
COATING	NONE	VT ROUTE 100 (MINOR ARTERIAL) OVER WHITE RIVER VT ROUTE 100 STA. 141+39.00 TO STA. 143+61.00 TOWN OF STOCKBRIDGE, COUNTY OF WINDSOR, VERMONT		
CODE(S)	63	STATE OF VERMONT AGENCY OF TRANSPORTATION		
SCALE	N.T.S.	STATE CONT. OR REF. NO.	PROJ. NO. (STP)BRF 013-4(21)	FED. AID PROJ. NO.
GENERAL CONTRACTOR	WINTerset, INC.	HESI PROJ. MGR	DEB KUPRES	
SHIPMT	1	DRAWING MANAGER	KREIDER (IH)	MADE BY
STATE	VT	HESI PROJECT NUMBER	S-1080077	HESI STRUCT. ID
		CHK'D BY	SSL	CS
		DATE	6-19-08	18 OF 22