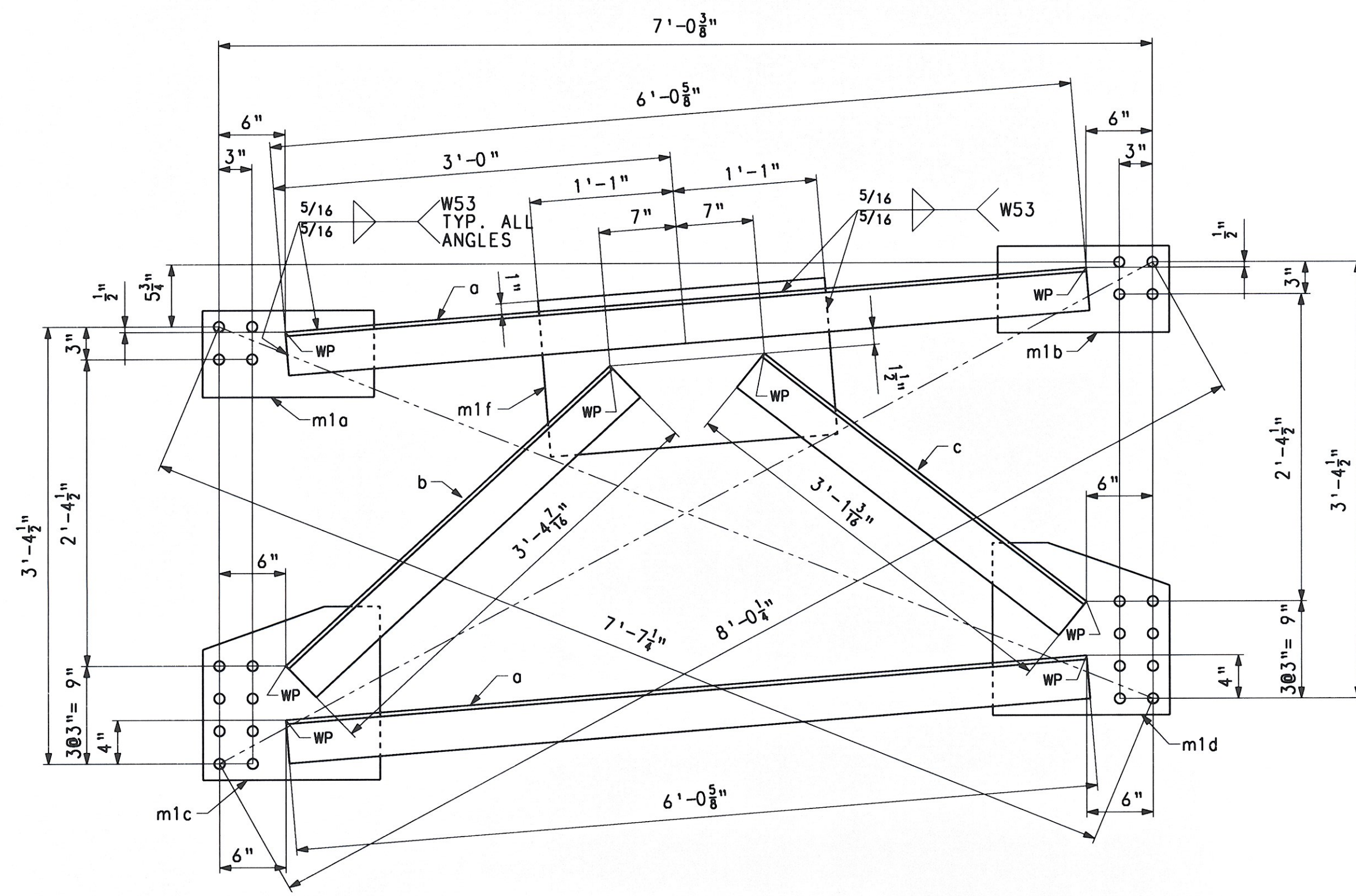
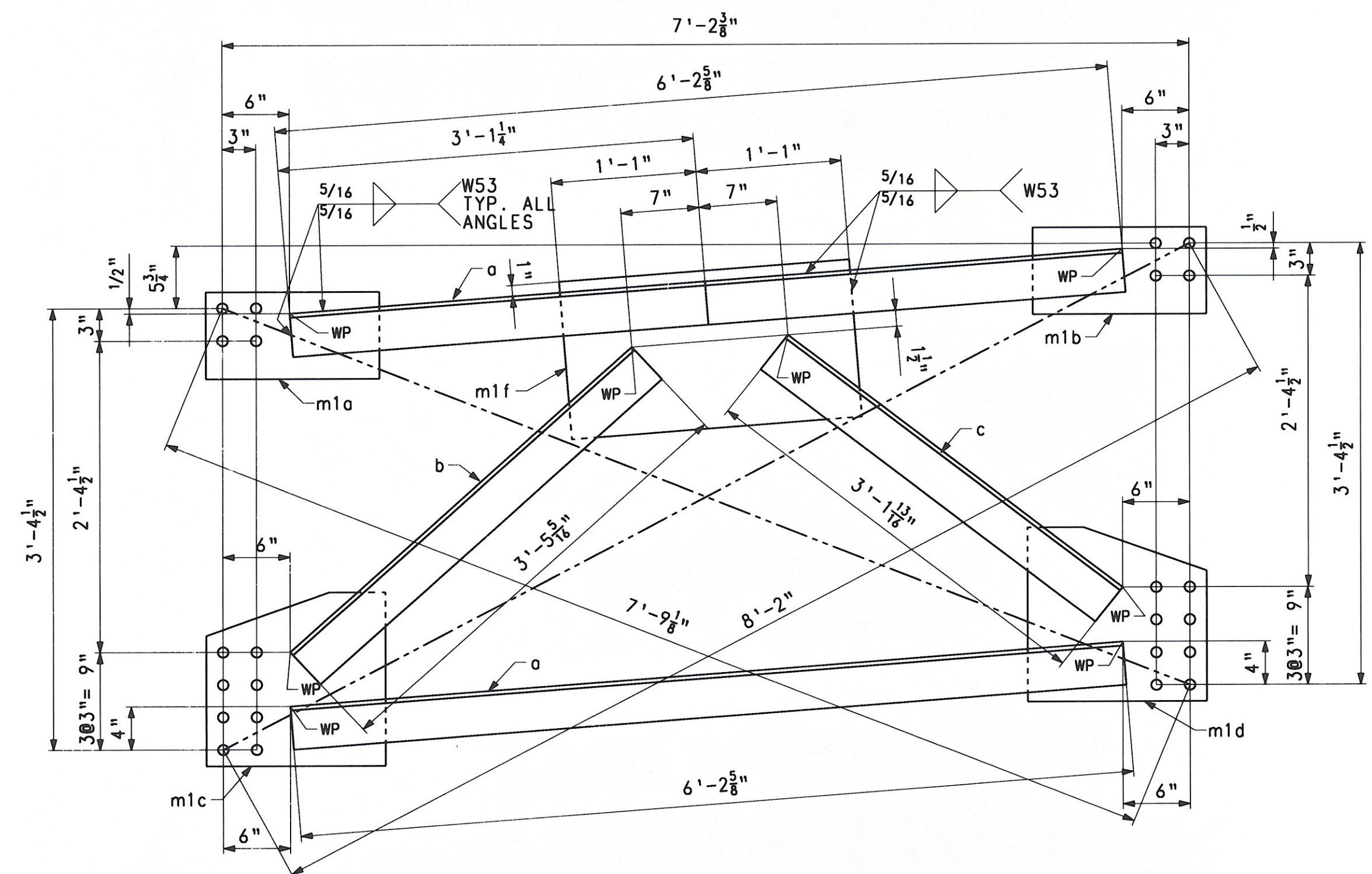


SHIPMENT 1 PKMENG: 5004327 PRO: 5004328 SHIPPERECT: 5004329

BY: S.Laudeng PLOTTED: 06/25/08 16:12:29



CROSSFRAME - MK. CF1



CROSSFRAME - MK. CF2

BILL OF MATERIAL

QTY	MARK	COMMODITY	DESCRIPTION	LENGTH	SPEC	GRADE	TEST	REMARKS	ITEM	GROSS WEIGHT EA.	DEDUCTED WEIGHT EA.	NET WEIGHT EA.
CROSSFRAME										341.74	0.00	341.74
1	CF1											
2	a	L	4 x 4 x 3/8	6 0 5/8	M270	50W	T		11002	58.83	0.00	58.83
1	b	L	4 x 4 x 3/8	3 4 7/16	M270	50W	T		11002	32.75	0.00	32.75
1	c	L	4 x 4 x 3/8	3 1 3/16	M270	50W	T		11002	30.12	0.00	30.12
1	m1a	PL	1/2 x 8	1 3 1/2	M270	50W	T		11003	17.58	0.00	17.58
1	m1b	PL	1/2 x 8	1 3 1/2	M270	50W	T		11003	17.58	0.00	17.58
1	m1c	PL	1/2 x 16	1 4	M270	50W	T		11003	36.30	0.00	36.30
1	m1d	PL	1/2 x 16	1 4	M270	50W	T		11003	36.30	0.00	36.30
1	m1f	PL	1/2 x 14 1/2	2 2	M270	50W	T		11003	53.45	0.00	53.45
CROSSFRAME										346.19	0.00	346.19
1	CF2											
2	a	L	4 x 4 x 3/8	6 2 5/8	M270	50W	T		11002	60.45	0.00	60.45
1	b	L	4 x 4 x 3/8	3 5 5/16	M270	50W	T		11002	33.46	0.00	33.46
1	c	L	4 x 4 x 3/8	3 1 13/16	M270	50W	T		11002	30.63	0.00	30.63
1	m1a	PL	1/2 x 8	1 3 1/2	M270	50W	T		11003	17.58	0.00	17.58
1	m1b	PL	1/2 x 8	1 3 1/2	M270	50W	T		11003	17.58	0.00	17.58
1	m1c	PL	1/2 x 16	1 4	M270	50W	T		11003	36.30	0.00	36.30
1	m1d	PL	1/2 x 16	1 4	M270	50W	T		11003	36.30	0.00	36.30
1	m1f	PL	1/2 x 14 1/2	2 2	M270	50W	T		11003	53.45	0.00	53.45
TOTAL WEIGHT THIS SHEET:										687.93		LBS.

RECEIVED
 OK'D BY: *JL* OK'D BY: *JL*
 AUG 18 2008
 RESUBMIT APPROVED
 BY: *KMH* DATE: *8/19/08*

FOR GENERAL SHOP NOTES, SEE DWG. GN1.

NO.	REVISION	BY	CHK'D	DATE
CROSSFRAMES CF1 & CF2 VT ROUTE 100 (MINOR ARTERIAL) OVER WHITE RIVER VT ROUTE 100 STA. 141+39.00 TO STA. 143+61.00 TOWN OF STOCKBRIDGE, COUNTY OF WINDSOR, VERMONT STATE OF VERMONT AGENCY OF TRANSPORTATION				
STATE CONT. OR REF. NO.	PROJ. NO. (STP)BRF 013-4(21)	FED. AID PROJ. NO.		
SCALE N.T.S.	GENERAL CONTRACTOR WINTERSET, INC.	HSSI PROJ. MGR	DEB KUPRES	
SHIPMT 1	DRAWING MANAGER KREIDER (IH)	MADE BY SSL	CHK'D BY CS	DATE 6-19-08
STATE VT	HSSI PROJECT NUMBER S-1080077	HSSI STRUCT. ID A	DRAWING NUMBER 16 OF 22	