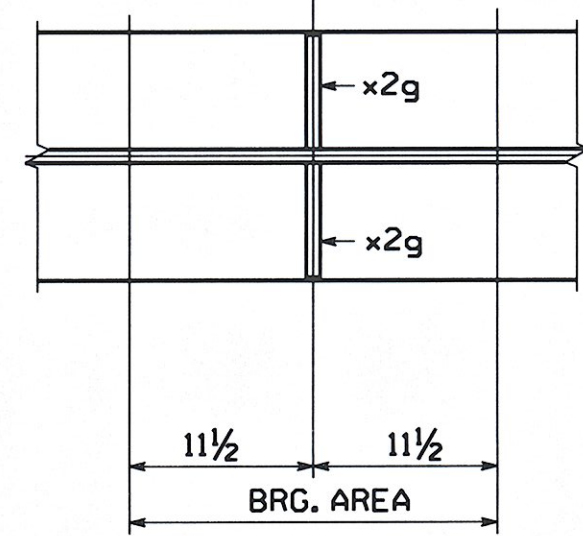
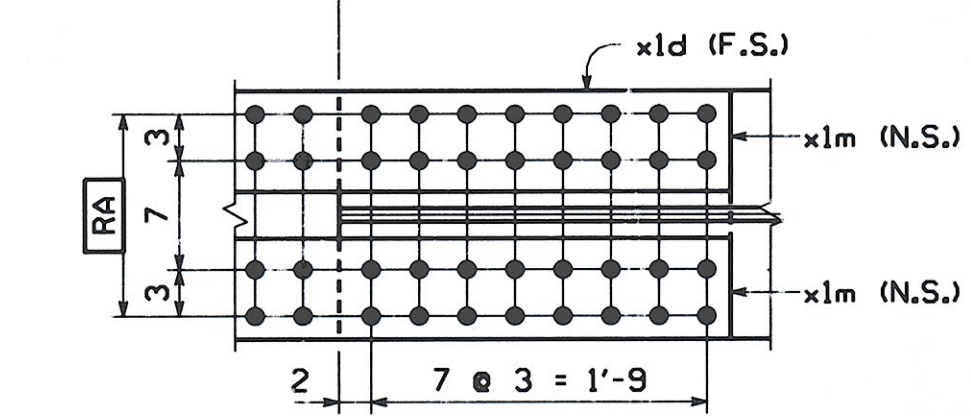
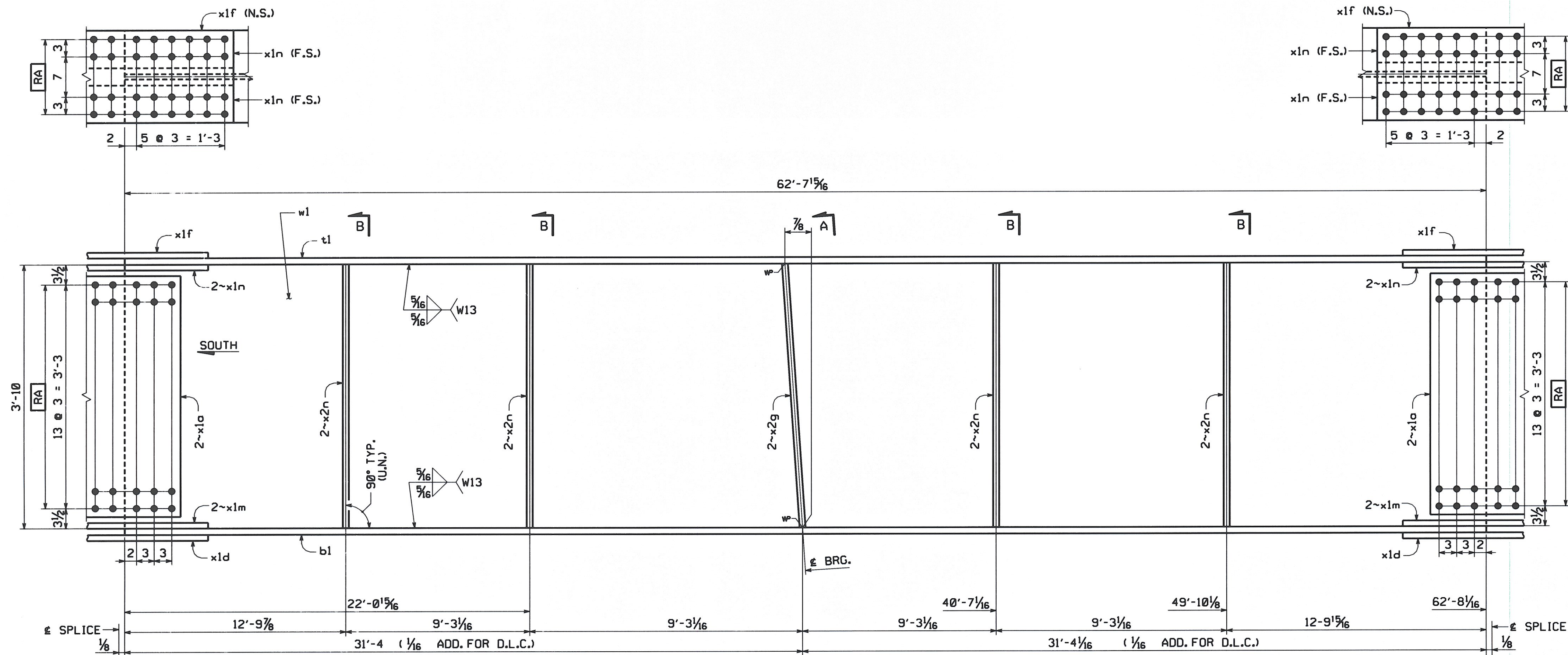
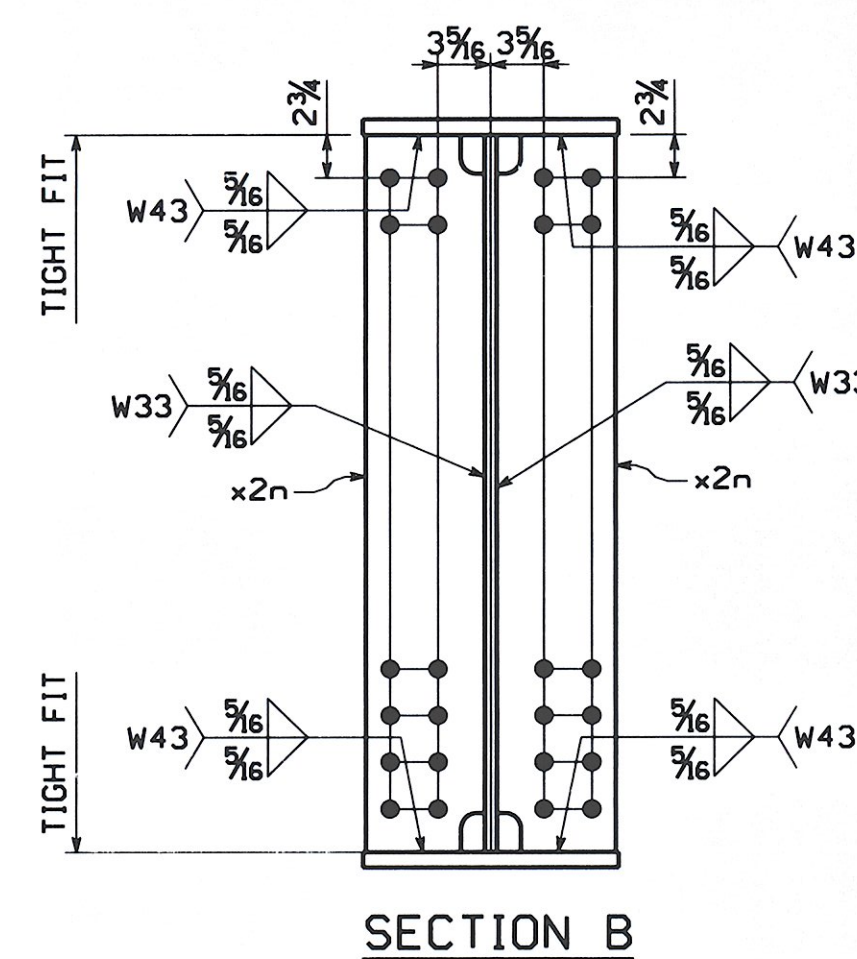
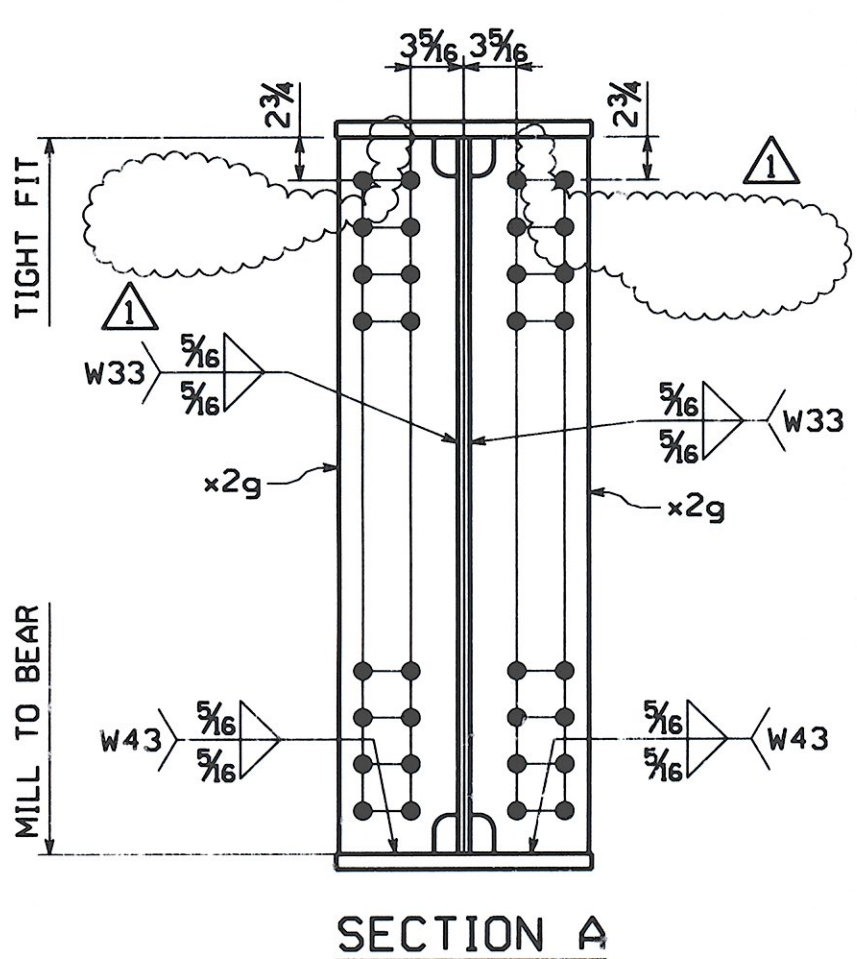
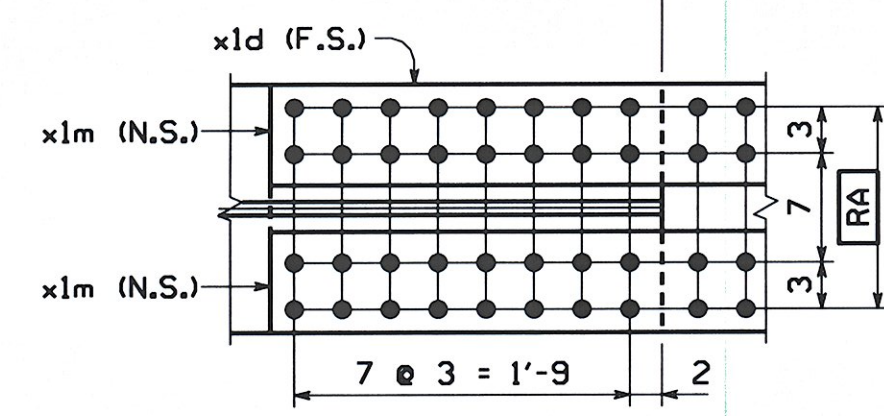


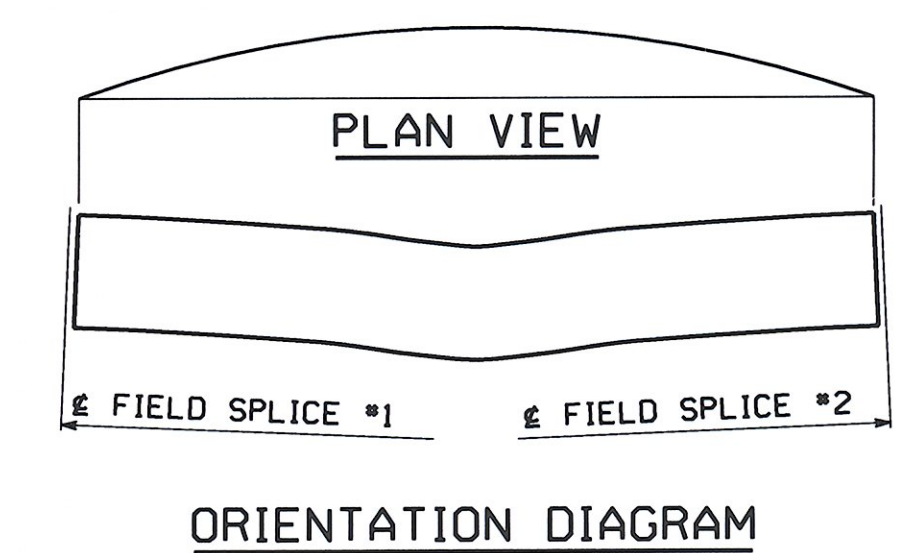
ENGLISH



GIRDER ~ MK. G3B
 FOR GENERAL SHOP NOTES, SEE DWG. GNI.
 FOR WEB CAMBER DIAGRAM, SEE DWG. WCI.
 FOR HORIZ. CURVE DIAGRAM, SEE DWG. HCI.



BILL OF MATERIAL													
QTY EA	MARK	COMM	DESCRIPTION	LENGTH	SPEC	GRADE	TEST	REMARKS	ITEM	GROSS WEIGHT EA	DEDUCTED WEIGHT EA	SHIP WT. EA (LBS)	
1	G3B		GIRDER	62'-67187"						21,535.56	0.56	21,535.56	
1	w1	PL	5/8 x 46	62	8	1/16	M270	50W	T	03007	6,131.18	0.56	6,130.62
1	t1	PL	2 x 16	62	7	15/16	M270	50W	T	04003	6,823.14	0.00	6,823.14
1	b1	PL	2 x 16	62	8	1/16	M270	50W	T	04003	6,824.27	0.00	6,824.27
4	x1a	PL	1/2 x 42	1	7	1/4	M270	50W	T	06001	458.52	0.00	458.52
2	x1d	PL	1/2 x 16	4	1	1/4	M270	50W	T	06004	223.45	0.00	223.45
2	x1f	PL	1/2 x 16	3	1	1/4	M270	50W	T	06004	84.50	0.00	84.50
4	x1m	PL	5/8 x 6	4	1	1/4	M270	50W	T	06007	52.37	0.00	52.37
4	x1n	PL	5/8 x 6	3	1	1/4	M270	50W	T	06007	39.61	0.00	39.61
2	x2g	PL	3/4 x 7 1/2	3	10		M270	50W	T	07002	73.37	0.00	73.37
8	x2n	PL	1/2 x 7 1/2	3	10		M270	50W	T	07004	48.91	0.00	48.91
TOTAL WEIGHT THIS SHEET:										21535.56 lbs.			



REMOVED WELDS	MCK	WW	8/2/08
NO.	REVISION	BY	CHK'D DATE
HOLES 1 5/8" (U.N.)			
BOLTS NONE			
GIRDER G3B			
VT ROUTE 100 (MINOR ARTERIAL) OVER WHITE RIVER			
TOWN OF STOCKBRIDGE, COUNTY OF WINDSOR, VERMONT			
STATE OF VERMONT			
AGENCY OF TRANSPORTATION			
STATE CONT. OR REF. NO.	PROJECT NO. (STP) BR	FED. AID PROJ. NO.	
VT	013-4(21)		
SCALE N.T.S.	GENERAL CONTRACTOR	HSSI PROJ. MGR	DEB KUPRES
	WINTERSET, INC.		
SHPMT 1	DRAWING MANAGER	MADE BY	CHK'D BY
	KREIDER (IH)	MAF	CS
STATE VT	HSSI PROJECT NUMBER	HSSI STRUCT. ID	DRAWING NUMBER
	S-1080077	A	8 OF 22

RECEIVED
 OK'D BY [Signature] OK'D BY [Signature]
 AUG 18 2008
 RESUBMIT APPROVED [Signature]
 BY KMH DATE 8/19/08

SHIPMENT 01
 PMAKENG: 50024329 SHIP&ERECT: 50024329
 BY: beever
 PLOTTED: 8/4/2008 8:24:27 AM