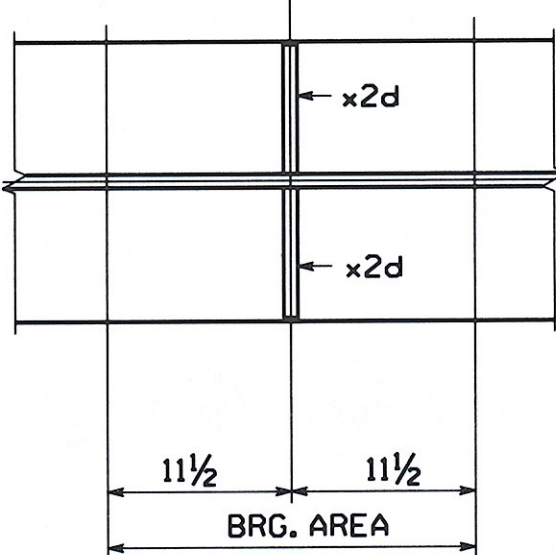
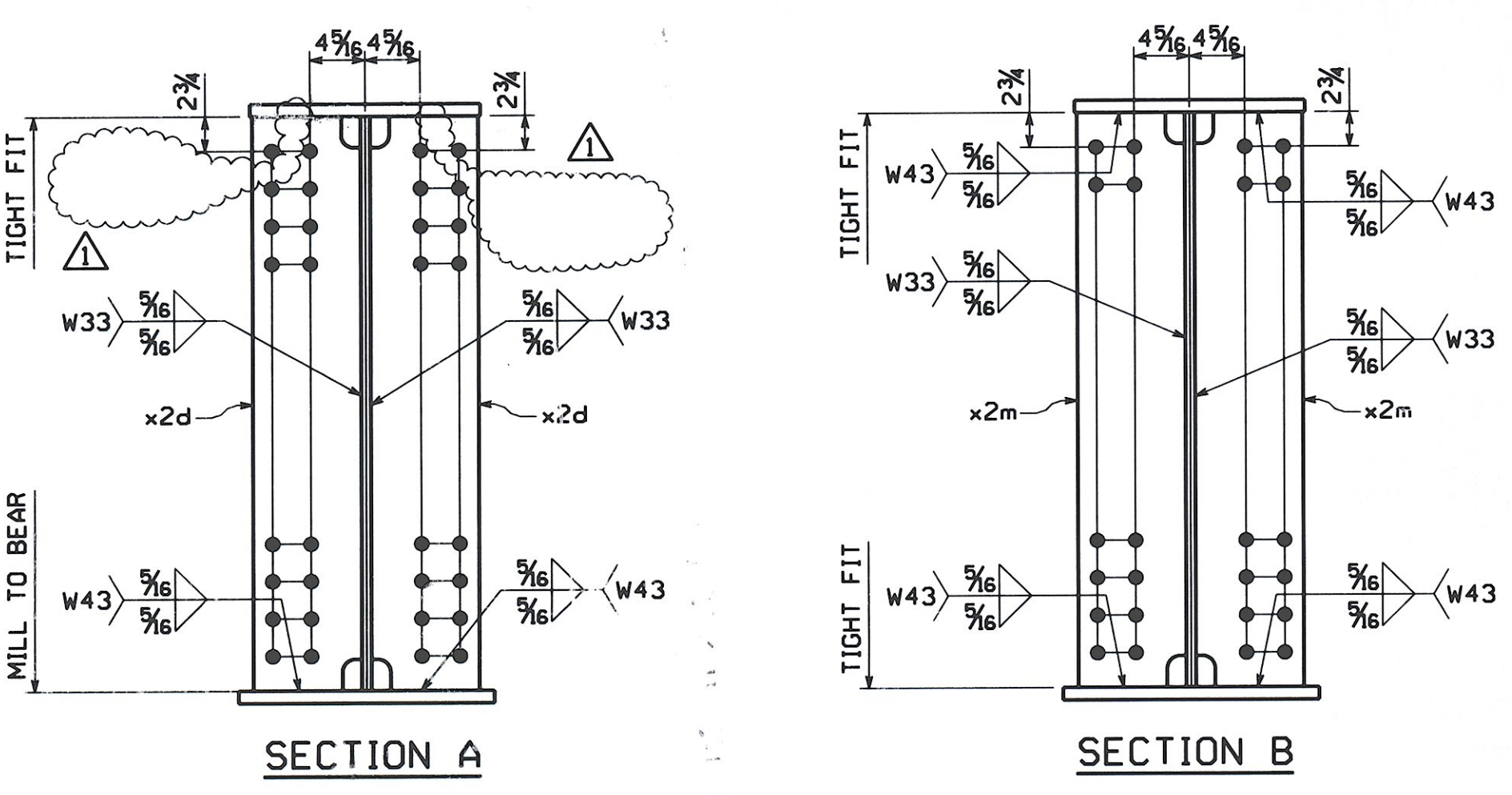
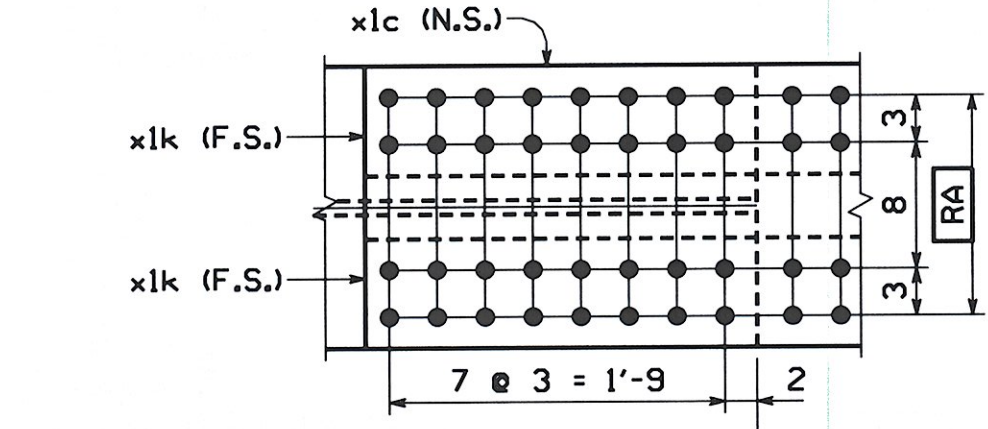
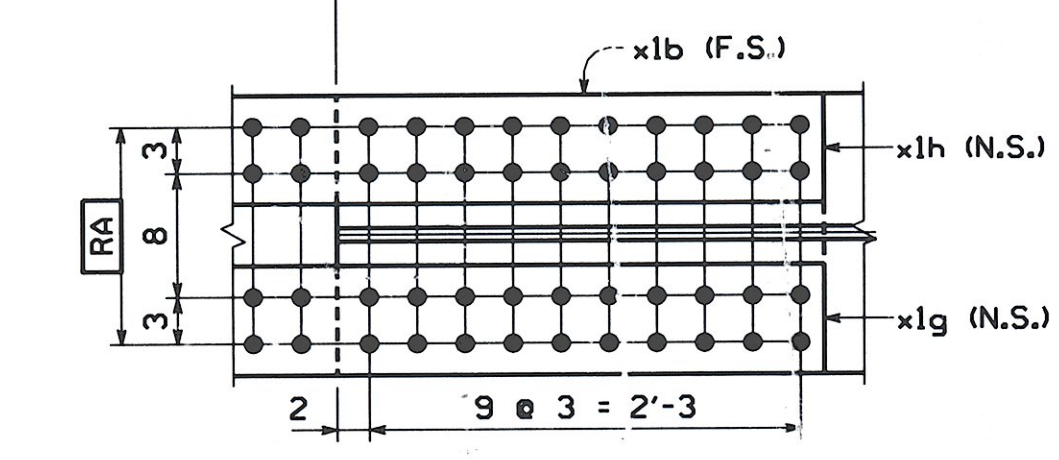
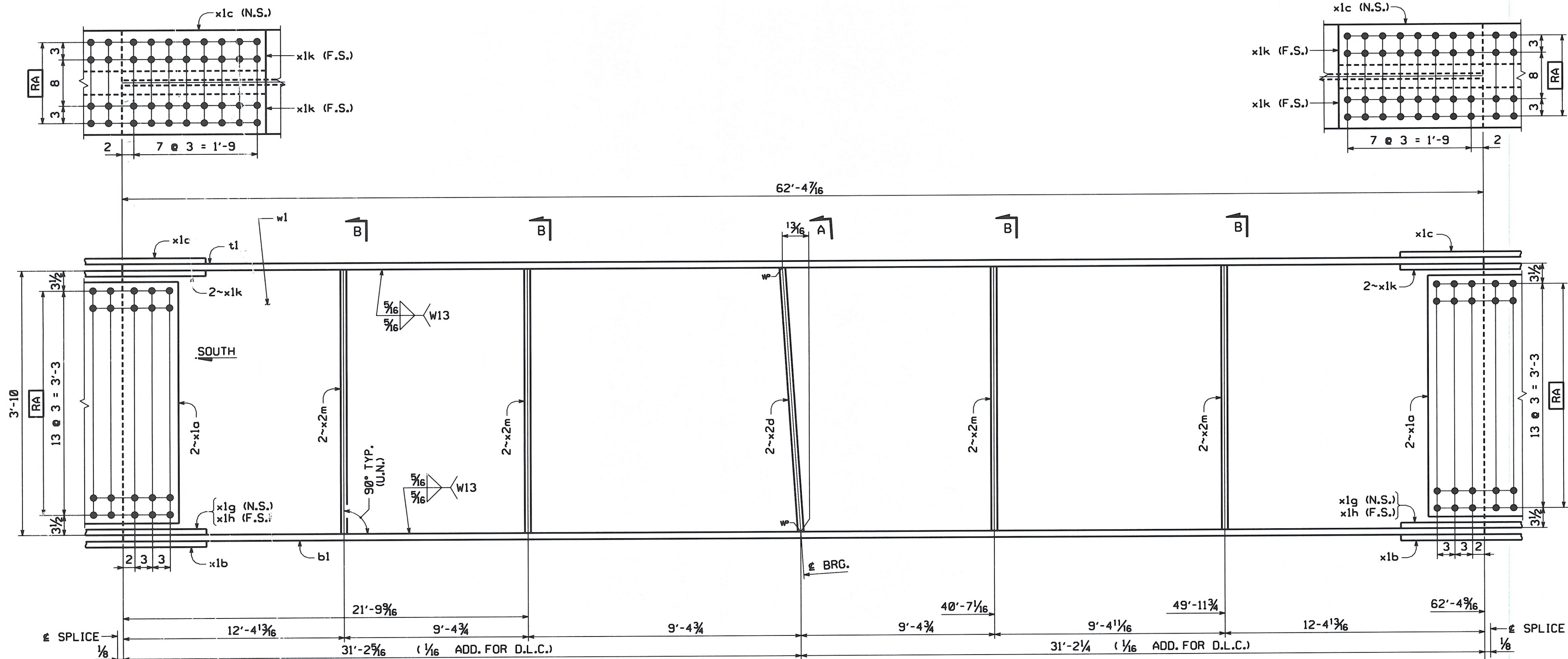
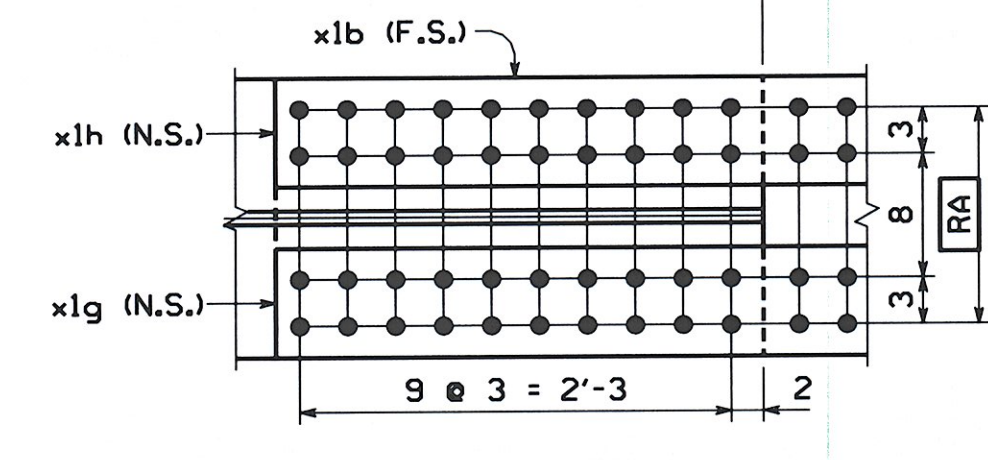


ENGLISH

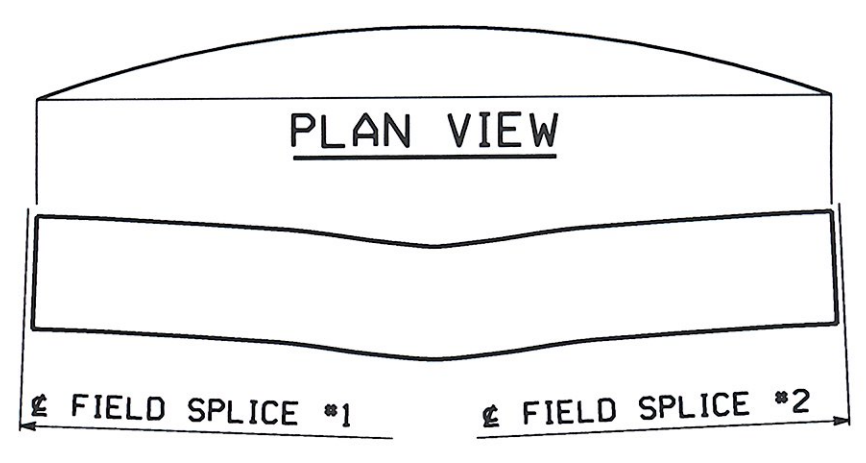


GIRDER ~ MK. G2B
 FOR GENERAL SHOP NOTES, SEE DWG. GNI.
 FOR WEB CAMBER DIAGRAM, SEE DWG. WC1.
 FOR HORIZ. CURVE DIAGRAM, SEE DWG. HC1.



BILL OF MATERIAL

QTY EA.	MARK	COMM.	DESCRIPTION	LENGTH	SPEC	GRADE	TEST	REMARKS	ITEM	GROSS WEIGHT EA.	DEDUCTED WEIGHT EA.	SHIP WT. EA. (LBS)	
1	G2B		GIRDER							25,503.16	0.56	25,503.16	
1	w1	PL	5/8 x 46	62	4	9/16	M270	50W	T	03006	6,102.65	0.56	6,102.09
1	t1	PL	2 1/4 x 18	62	4	7/16	M270	50W	T	04001	8,595.34	0.00	8,595.34
1	b1	PL	2 1/4 x 18	62	4	9/16	M270	50W	T	04001	8,596.77	0.00	8,596.77
4	x1a	PL	1/2 x 42	1	7	1/4	M270	50W	T	06001	458.52	0.00	458.52
2	x1b	PL	1/2 x 18	5	1	1/4	M270	50W	T	06002	312.63	0.00	312.63
2	x1c	PL	1/2 x 18	4	1	1/4	M270	50W	T	06003	125.69	0.00	125.69
2	x1g	PL	5/8 x 7	5	1	1/4	M270	50W	T	06005	75.99	0.00	75.99
2	x1h	PL	5/8 x 7	5	1	1/4	M270	50W	T	06005	75.99	0.00	75.99
4	x1k	PL	5/8 x 7	4	1	1/4	M270	50W	T	06006	61.10	0.00	61.10
2	x2d	PL	7/8 x 8 1/2	3	10		M270	50W	T	07001	97.01		97.01
8	x2m	PL	1/2 x 8 1/2	3	10		M270	50W	T	07003	55.44		55.44
TOTAL WEIGHT THIS SHEET:										25503.16 lbs.			



REMOVED WELDS	MGK	WW	8/2/08
NO.	REVISION	BY	CHK'D DATE
HOLES 1 5/16" (U.N.)			
BOLTS NONE	GIRDER G2B		
COATING NONE	VT ROUTE 100 (MINOR ARTERIAL) OVER WHITE RIVER VT ROUTE 100 STA. 141+39.00 TO STA. 143+61.00 TOWN OF STOCKBRIDGE, COUNTY OF WINDSOR, VERMONT		
CODE(S) 30	STATE OF VERMONT AGENCY OF TRANSPORTATION		
SCALE N.T.S.	STATE CONT. PROJECT NO. (STP) BR OR REF. NO. 013-4(21)	FED. AID PROJ. NO.	
GENERAL CONTRACTOR	WINTERSSET, INC.	HSSI PROJ. MGR	DEB KUPRES
SHPMT 1	DRAWING MANAGER KREIDER (IH)	MADE BY MAF	CHK'D BY CS
STATE VT	HSSI PROJECT NUMBER S-1080077	HSSI STRUCT. ID A	DRAWING NUMBER 7 OF 22

RECEIVED
 CK'D BY JFL OK'D BY JFL
 AUG 18 2008
 RESUBMIT APPROVED
 BY kmh DATE 8/17/08

PM&ENG: 5004327 PRD: 5004329 SHIP&RECT: 5004329

SHIPMENT 01

BY: bueover

PLOTTED: 8/4/2008 8:24:17 AM