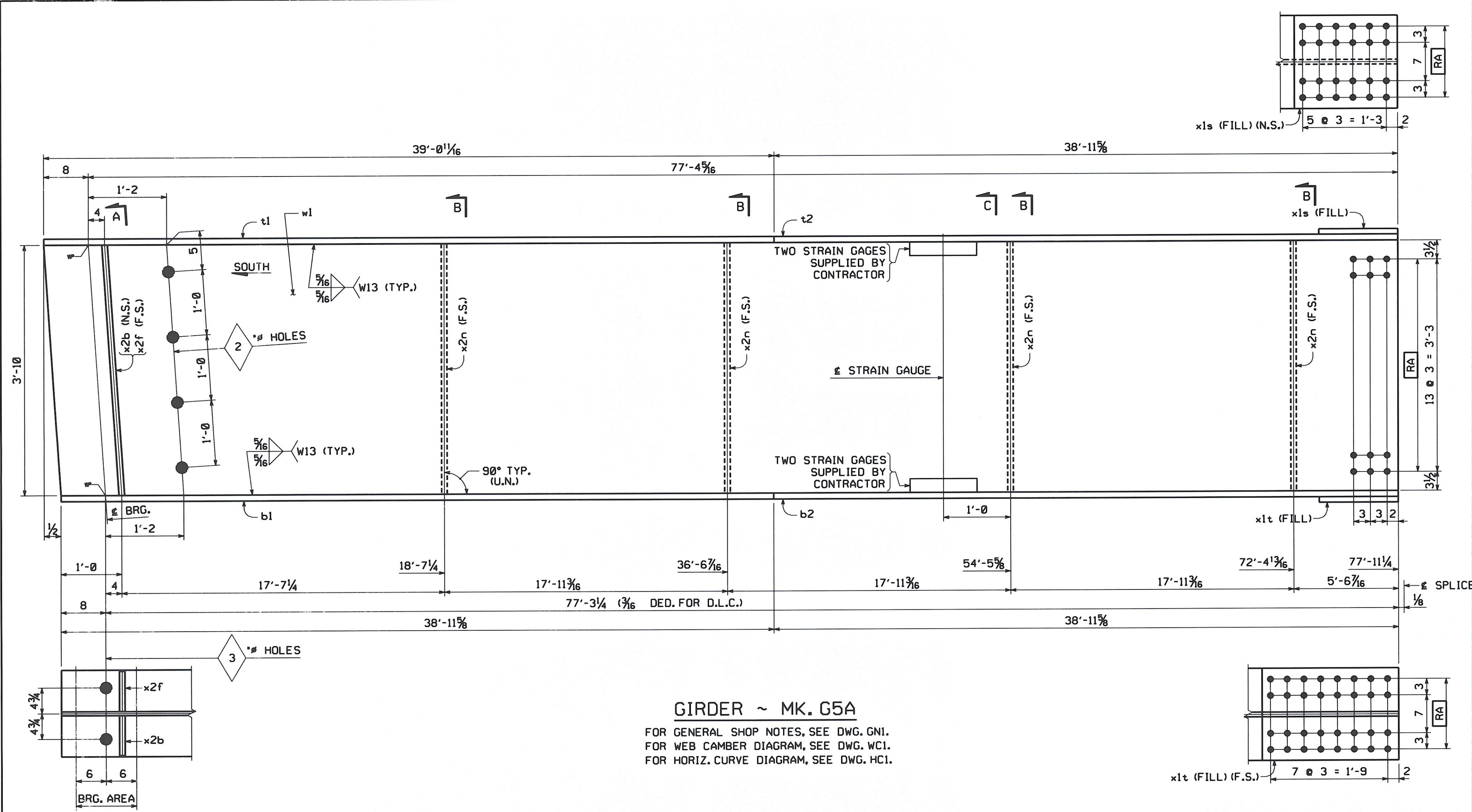
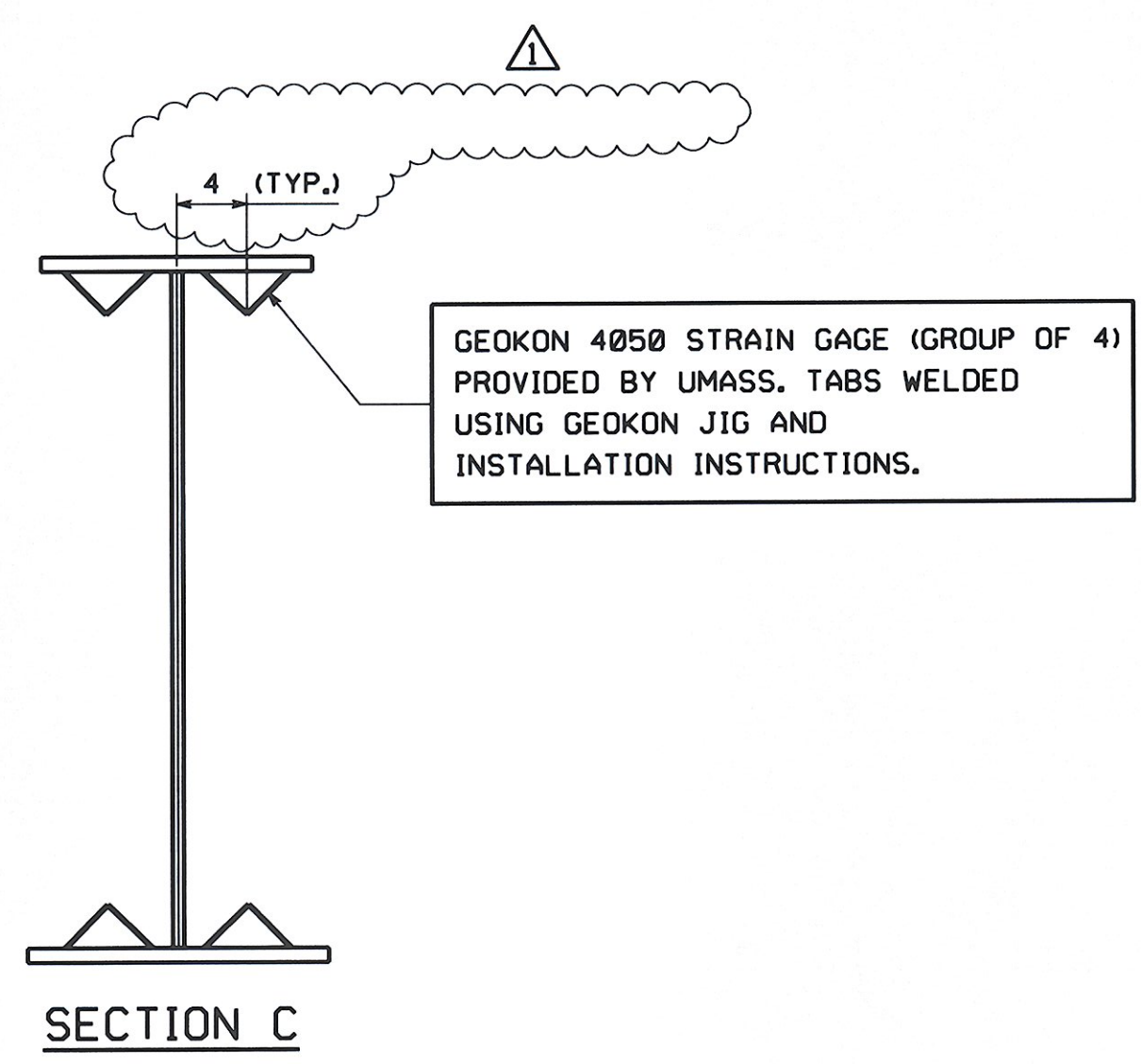
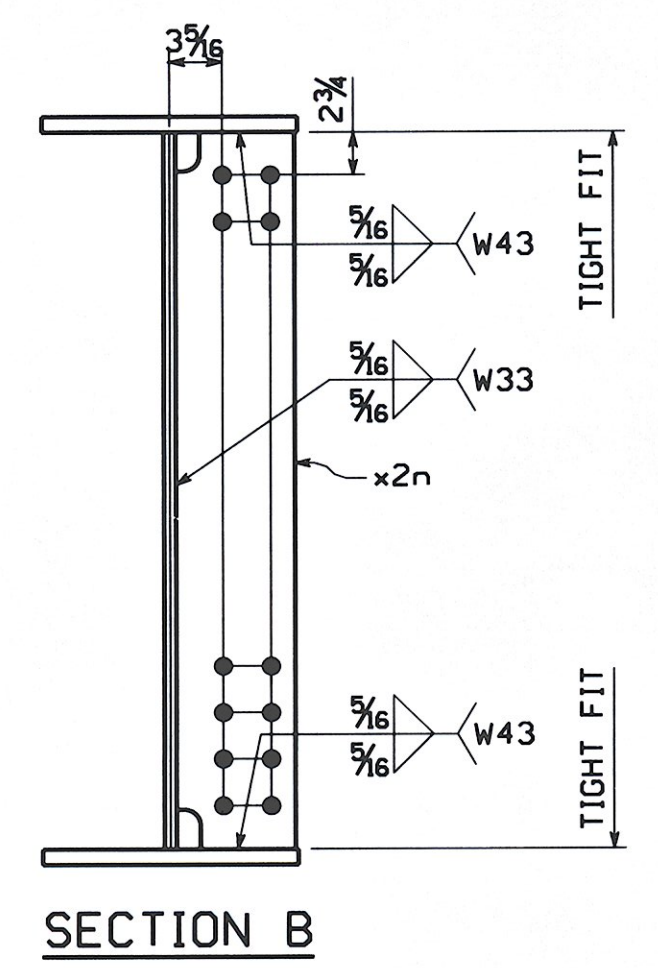
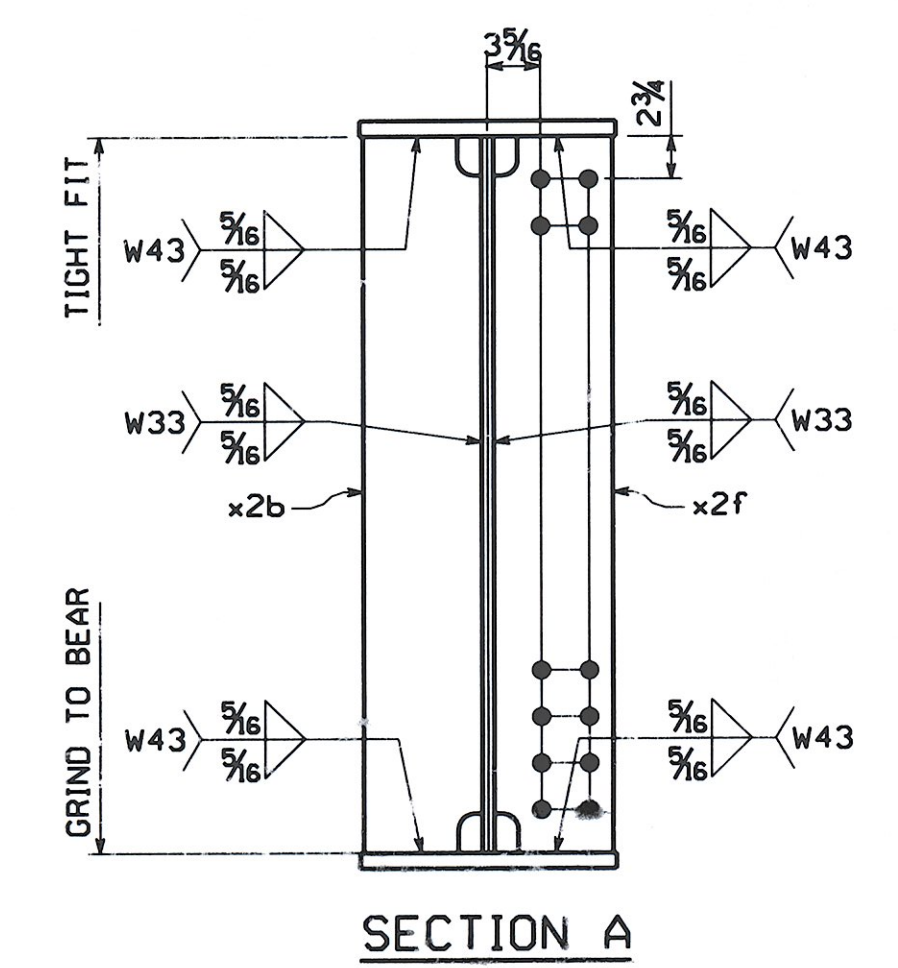
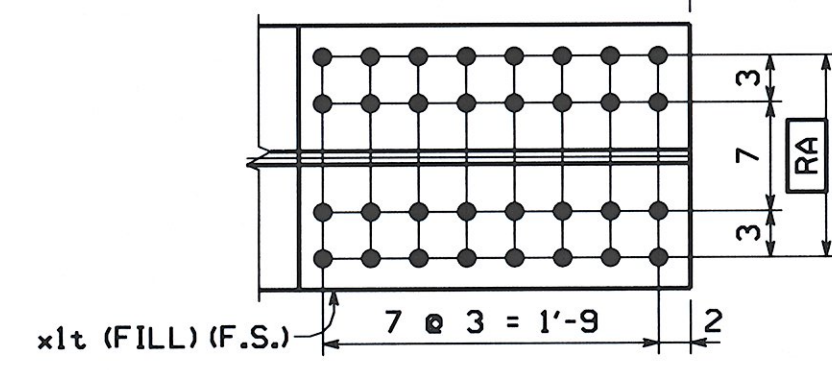
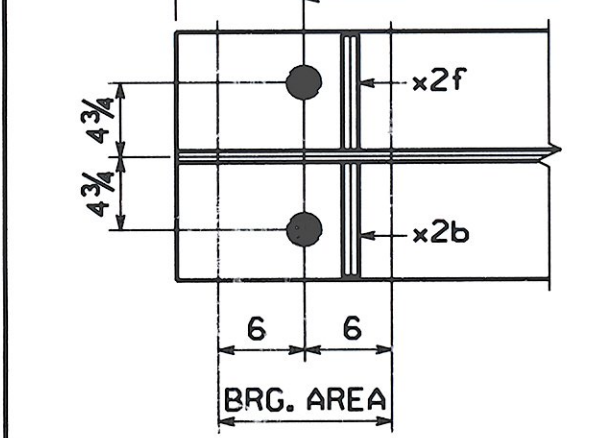


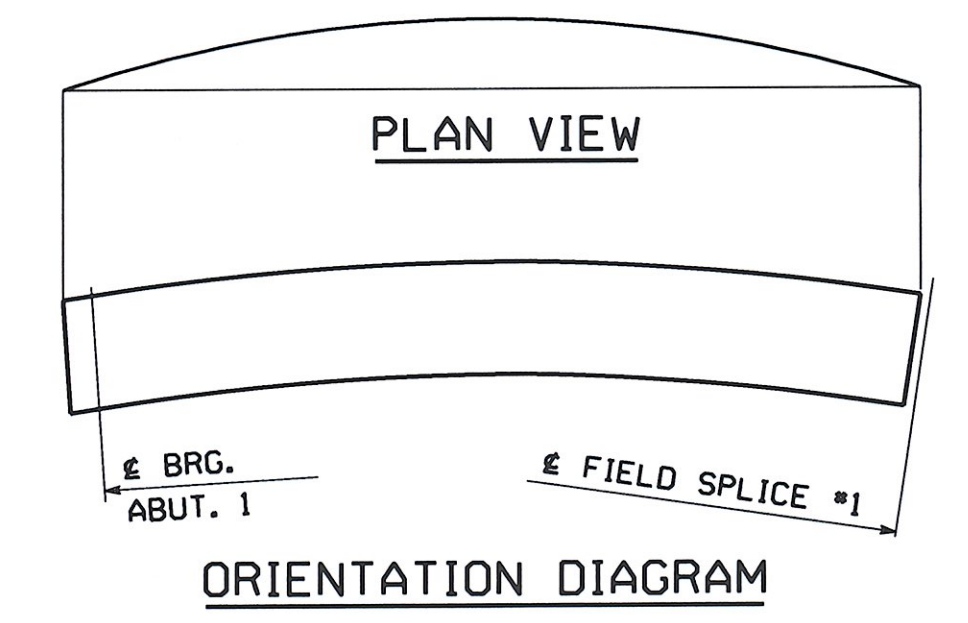
ENGLISH



**GIRDER ~ MK. G5A**  
 FOR GENERAL SHOP NOTES, SEE DWG. GNI.  
 FOR WEB CAMBER DIAGRAM, SEE DWG. WC1.  
 FOR HORIZ. CURVE DIAGRAM, SEE DWG. HC1.



BILL OF MATERIAL													
QTY EA	MARK	COMM	DESCRIPTION	LENGTH	SPEC	GRADE	TEST	REMARKS	ITEM	GROSS WEIGHT EA	DEDUCTED WEIGHT EA	SHP WT. EA (LBS)	
1	G5A		GIRDER							18,728.18	4.75	18,728.18	
1	w1	PL	5/8 x 46	78	0 5/16	M270	50W	T	03005	7,633.28	4.75	7,628.53	
1	t1	PL	1 x 16	39	0 11/16	M270	50W	T	04010	2,126.45	0.00	2,126.45	
1	t2	PL	1 x 16	38	11 5/8	M270	50W	T	04010	2,121.63	0.00	2,121.63	
1	b1	PL	1 1/2 x 16	38	11 5/8	M270	50W	T	04006	3,182.45	0.00	3,182.45	
1	b2	PL	1 1/2 x 16	38	11 5/8	M270	50W	T	04006	3,182.45	0.00	3,182.45	
1	x1s	PL	1 x 16	1	6 1/2	M270	50W	T	FILL PL 06009	83.94	0.00	83.94	
1	x1t	PL	1/2 x 16	2	0 1/2	M270	50W	T	FILL PL 06010	55.58	0.00	55.58	
1	x2b	PL	3/4 x 7 1/2	3	10	M270	50W	T	07002	73.37	0.00	73.37	
1	x2f	PL	3/4 x 7 1/2	3	10	M270	50W	T	07002	73.37	0.00	73.37	
4	x2n	PL	1/2 x 7 1/2	3	10	M270	50W	T	07004	48.91	0.00	48.91	
4			STRAIN GAGE						SUPPLIED BY CONTRACTOR				
<b>TOTAL WEIGHT THIS SHEET:</b>										<b>18728.18 lbs.</b>			



NO.	REVISION	BY	CHK'D	DATE
	ADDED DIMENSION TO LOCATE STRAIN GAGE & REMOVED CONTRACTOR PLEASE SUPPLY	MCK	WW	8/2/08
HOLES (L.N.)	1 5/8" (L.N.)			
BOLTS	NONE			
GIRDER G5A				
VT ROUTE 100 (MINOR ARTERIAL) OVER WHITE RIVER				
VT ROUTE 100 STA. 141+39.00 TO STA. 143+61.00				
TOWN OF STOCKBRIDGE, COUNTY OF WINDSOR, VERMONT				
STATE OF VERMONT				
AGENCY OF TRANSPORTATION				
SCALE	STATE CONT. OR REF. NO. 013-4(21)	PROJECT NO. (STP) BRP	FED. AID PROJ. NO.	
N.T.S.				
GENERAL CONTRACTOR	WINTERSET, INC.		HSSI PROJ. MGR	DEB KUPRES
SHPMT	1	DRAWING MANAGER KREIDER (IH)	MADE BY MAF	CHK'D BY CS DATE 6-23-08
STATE	VT	HSSI PROJECT NUMBER S-1080077	HSSI STRUCT. ID A	DRAWING NUMBER 5 OF 22

RECEIVED  
 CK'D BY: JZ OK'D BY: JFC  
 AUG 18 2008  
 RESUBMIT APPROVED ✓  
 BY: KMH DATE: 8/19/08

SHIPMENT 01  
 PM&ENG: 5004327 PRD: 5004329 SHIP&RECT: 5004329  
 PLOTTED: 8/17/2008 8:23:59 AM  
 BY: bweaver