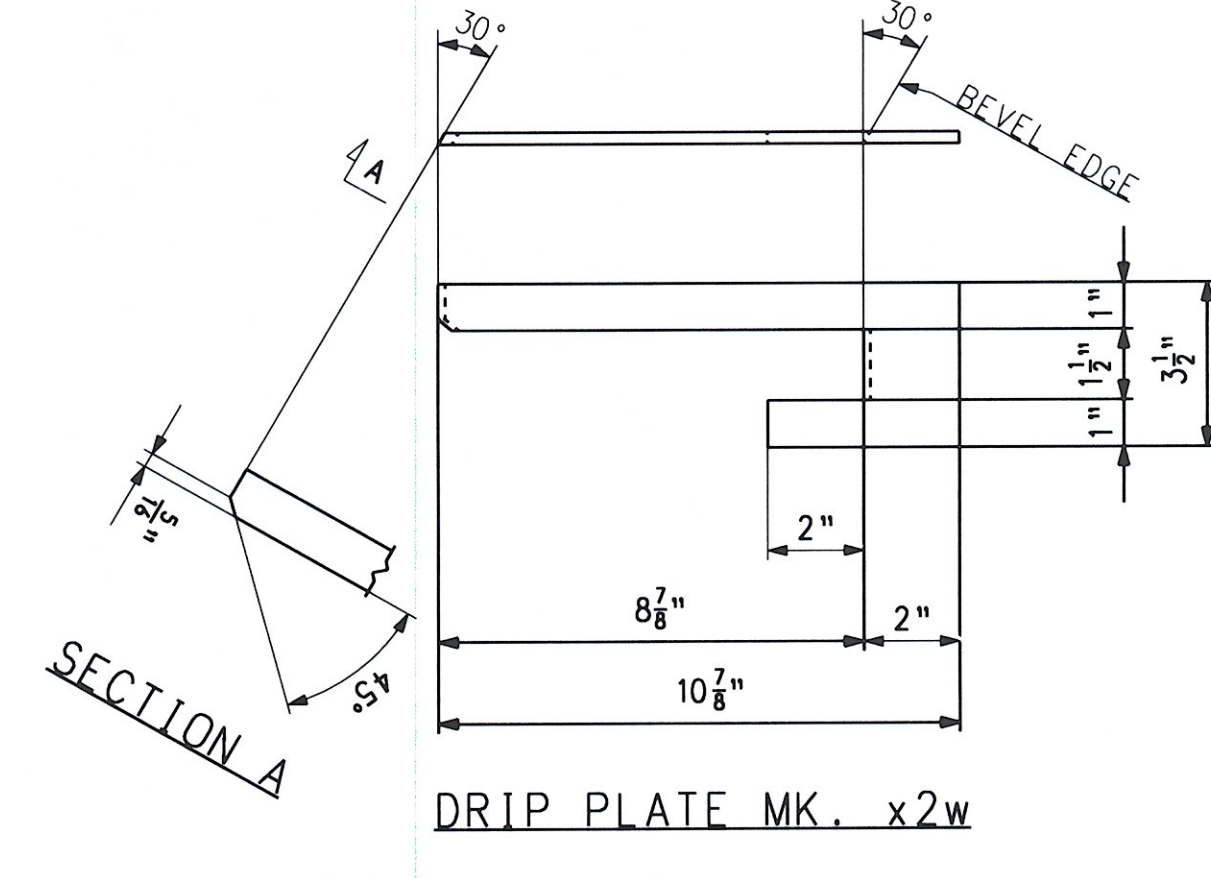
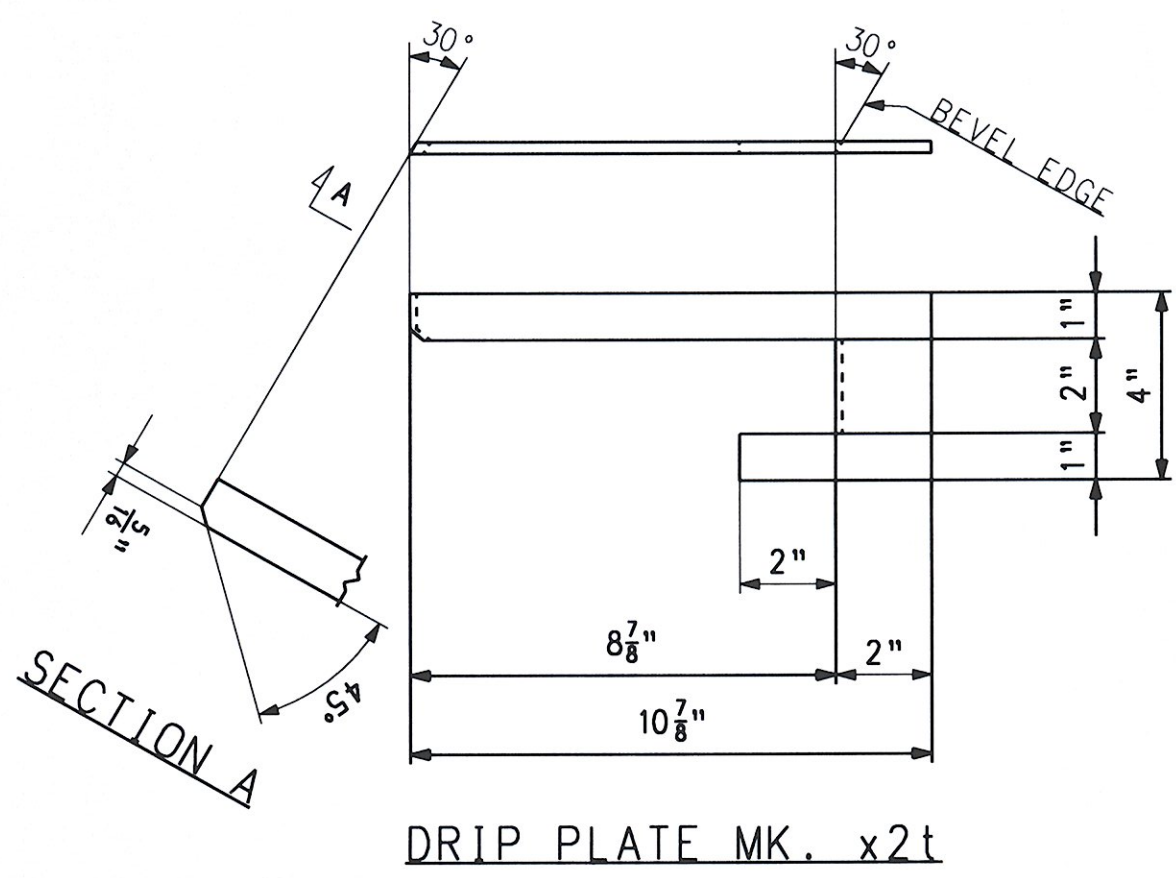
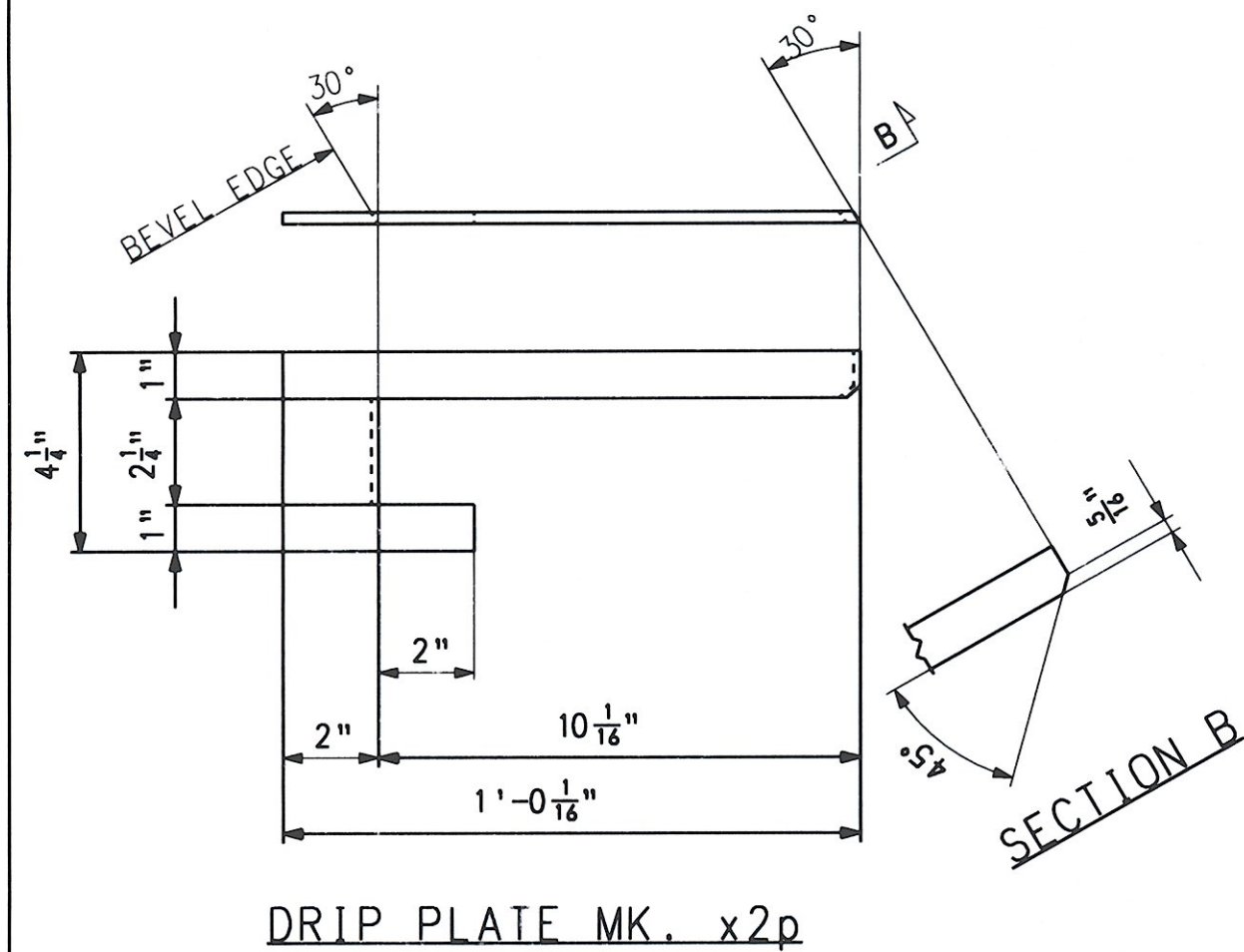
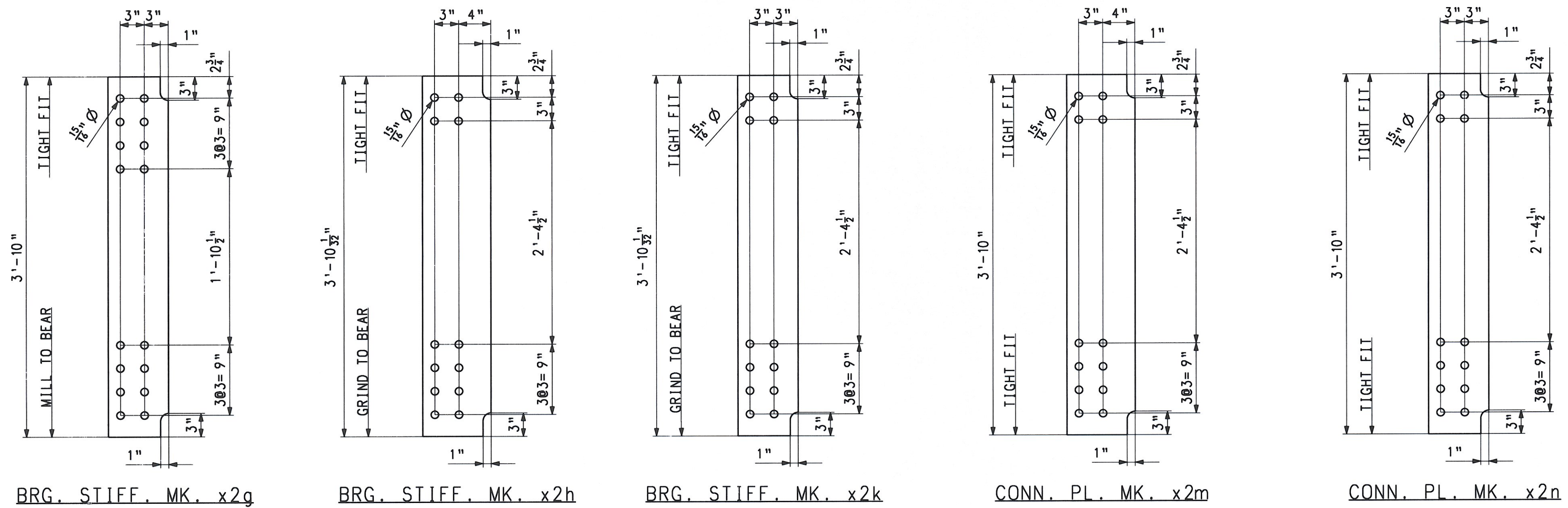
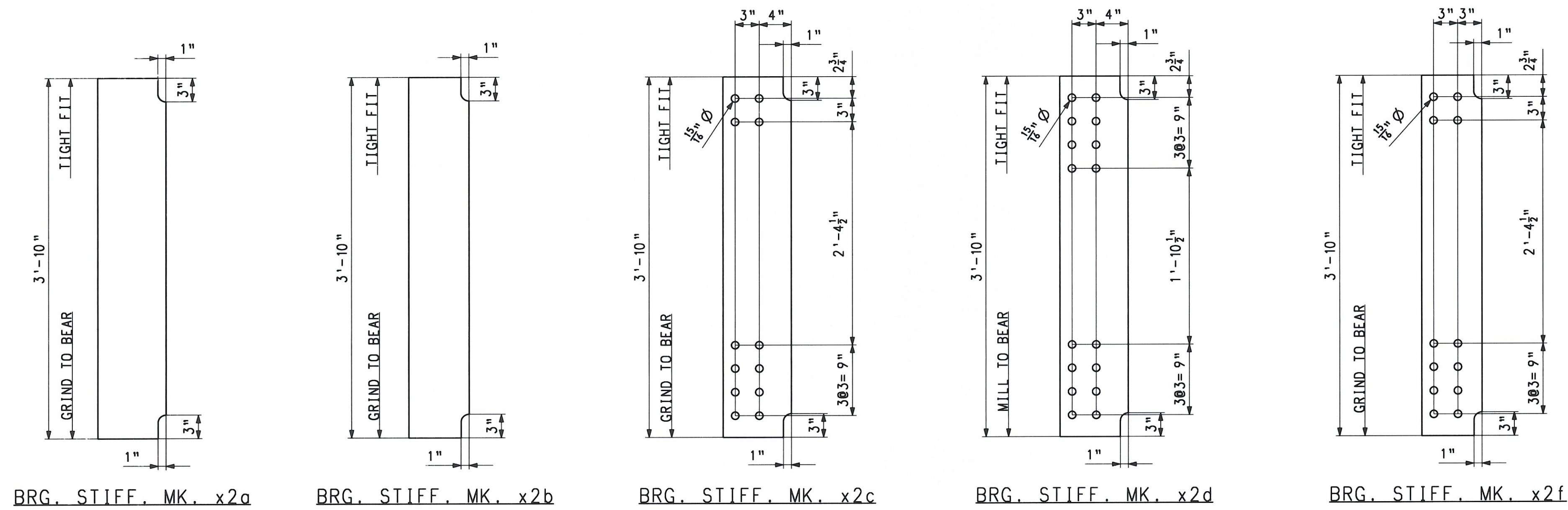


SHIPMENT 1
 PMENGS: 500432Z PRD: 500432B SHIP&RECT: 5004329

BY: Mkreide1

PLOTTED: 06/25/08 16:31:29



*These 1/2
 on fillet
 1 of 22
 to 22*

BILL OF MATERIAL

QTY	MARK	COMMODITY	DESCRIPTION	LENGTH	SPEC	GRADE	TEST	REMARKS	ITEM	GROSS WEIGHT EA.	DEDUCTED WEIGHT EA.	NET WEIGHT EA.		
3	x2a	PL	7/8	8 1/2	3	10	M270	50W	T	07001	97.01	0.00	97.01	
3	x2b	PL	3/4	7 1/2	3	10	M270	50W	T	07002	73.37	0.00	73.37	
3	x2c	PL	7/8	8 1/2	3	10	M270	50W	T	07001	97.01	0.00	97.01	
3	x2d	PL	7/8	8 1/2	3	10	M270	50W	T	07001	97.01	0.00	97.01	
5	x2e	PL	3/4	7 1/2	3	10	M270	50W	T	07002	73.37	0.00	73.37	
5	x2g	PL	3/4	7 1/2	3	10	M270	50W	T	07002	73.37	0.00	73.37	
3	x2h	PL	7/8	8 1/2	3	10	1/32	M270	50W	T	07001	97.08	0.00	97.08
5	x2k	PL	3/4	7 1/2	3	10	1/32	M270	50W	T	07002	73.42	0.00	73.42
36	x2m	PL	1/2	8 1/2	3	10	M270	50W	T	07003	55.44	0.00	55.44	
60	x2n	PL	1/2	7 1/2	3	10	M270	50W	T	07004	48.91	0.00	48.91	
2	x2p	PL	1/4	4	1	0	1/16	M270	50W		07007	3.63	0.00	3.63
1	x2t	PL	1/4	4	10	7/8	M270	50W		07005	3.08	0.00	3.08	
1	x2w	PL	1/4	3 1/2	10	7/8	M270	50W		07006	2.70	0.00	2.70	

RECEIVED
 OK'D BY: *JK* OK'D BY: *JFL*
 AUG 18 2008
 RESUBMIT APPROVED
 BY: *KMH* DATE: *8/19/08*

NO.	REVISION	BY	CHK'D	DATE	
1					
GIRDER JOB STANDARDS					
VT ROUTE 100 (MINOR ARTERIAL) OVER WHITE RIVER					
VT ROUTE 100 STA. 141+39.00 TO STA. 143+61.00					
TOWN OF STOCKBRIDGE, COUNTY OF WINDSOR, VERMONT					
STATE OF VERMONT					
AGENCY OF TRANSPORTATION					
SCALE	STATE CONT. OR REF. NO.	PROJECT NO. (STP) BR 013-4(21)	FED. AID PROJ. NO.		
N.T.S.					
GENERAL CONTRACTOR	WINTERSSET, INC.		HESI PROJ. MGR	DEB KUPRES	
DRAWING MANAGER	KREIDER (IH)	MADE BY	MAF	CHK'D BY	CS
DATE	6-23-08				
STATE	VT	HESI PROJECT NUMBER	S-1080077	HESI STRUCT. ID	A
DRAWING NUMBER					X2 OF X2

FOR GENERAL SHOP NOTES, SEE DWG. GN1