

SHIPPING PIECES		
SHIPPING PIECE MARK	WEIGHT EA (LBS)	DWG NO.
G1A	26,405	1
G2A	26,426	2
G3A	19,480	3
G4A	19,148	4
G5A	18,728	5
G1B	26,066	6
G2B	25,503	7
G3B	21,536	8
G4B	21,363	9
G5B	20,710	10
G1C	26,404	11
G2C	26,420	12
G3C	19,475	13
G4C	19,144	14
G5C	18,726	15
CF1	342	16
CF2	346	16
CF3	346	17
CF4	344	17
CF5	344	18
CF6	342	18
CF7	346	19
CF8	346	19
CF9	342	20
CF10	441	20
CF11	438	21
CF12	444	21
CF13	444	22

ERECTOR FRAMING PLAN

LIST OF FIELD CONNECTIONS

LINE	ACTUAL NUMBER REQ'D	ROLT DIAM	BOLT LENGTH	BOLTS PER CONN	NO OF CONN	GRIP	THICKNESS OF PIECES JOINED			PIECES CONNECTED AND REMARKS
1	840	7/8	3	84	10	1/2 5/8	1/2	5/8	1/2	WEB SPL @ FS1 G1-G5; FS2 G1-G5
2	228	7/8	4 1/2	48	6	3 1/8	1/2	2	5/8	TOP FLG SPL @ FS1 G3-G5; FS2 G3-G5
3	256	7/8	4 3/4	64	4	3 3/8	1/2	2 1/4	5/8	TOP FLG SPL @ FS1 G1-G2; FS2 G1-G2
4	384	7/8	4 1/2	64	6	3 1/8	1/2	2	5/8	BOT FLG SPL @ FS1 G3-G5; FS2 G3-G5
5	320	7/8	4 3/4	80	4	3 3/8	1/2	2 1/4	5/8	BOT FLG SPL @ FS1 G1-G2; FS2 G1-G2
6	72	7/8	2 3/4	12	6	1 3/8	1/2	7/8		ABUT. CF TO BRG. STIFF. (G1 & G2)
7	120	7/8	2 1/2	12	10	1 1/4	1/2	3/4		ABUT. CF TO BRG. STIFF. (G3 - G5)
8	48	7/8	2 3/4	16	3	1 3/8	1/2	7/8		PIER CF TO BRG STIFF. (G1 & G2)
9	80	7/8	2 1/2	16	5	1 1/4	1/2	3/4		PIER CF TO BRG STIFF. (G3 - G5)
10	1152	7/8	2 1/4	12	96	1	1/2	1/2		INTERM CF TO CONN. PL.

FIELD BOLT SUMMARY - SHIP. #1

(2% ADDITIONAL BOLTS ADDED + 3 EA FOR TESTING)

AASHTO M164 TYPE 3 (RCT); WHYV HEX HD

- +15 ✓ 591 - 7/8" HIGH STRENGTH BOLTS x 0'-4 3/4
- +16 ✓ 688 - 7/8" HIGH STRENGTH BOLTS x 0'-4 1/2
- +20 ✓ 860 - 7/8" HIGH STRENGTH BOLTS x 0'-3
- +5 ✓ 125 - 7/8" HIGH STRENGTH BOLTS x 0'-2 3/4
- +7 ✓ 207 - 7/8" HIGH STRENGTH BOLTS x 0'-2 1/2
- +26 ✓ 1,178 - 7/8" HIGH STRENGTH BOLTS x 0'-2 1/4

3,649 bolts

AASHTO M291 GRADE D+B (RCT); H.VY HEX

- ✓ 3,649 - NUTS FOR 7/8" BOLT

AASHTO M293 WEATHERING (RCT); ROUND & FLAT

- ✓ 3,649 - STD WASHERS FOR 7/8" BOLT

NOTES:

NO CREDIT WILL BE ALLOWED FOR WORK PERFORMED BY OTHERS IN REPLACING OR CORRECTING MATERIALS OR WORKMANSHIP COVERED BY THIS DRAWING UNLESS EXPRESSLY AUTHORIZED BY HIGH STEEL STRUCTURES, INC. HIGH STEEL STRUCTURES, INC. DOES NOT SUPPLY SHEAR STUDS, EXPANSION DAM MATERIAL, BEARINGS, BEARING PADS, ANCHOR BOLTS, FIELD APPLIED GREASE COATING, OR HOLES FOR FLEMING BRACKETS

ERECTOR NOTE: ELEVATIONS, CAMBER CHECKS AND HORIZONTAL ALIGNMENT OF FIELD SPLICES MUST BE COMPLETED PRIOR TO FINAL BOLTING. HIGH STEEL STRUCTURES IS TO BE NOTIFIED AND CONSULTED, PRIOR TO FINAL BOLTING, IF SPLICE LOCATIONS ARE NOT WITHIN ACCEPTABLE TOLERANCE. BOTH VERTICAL & HORIZONTAL CORRECTION OF ANY UNACCEPTABLE SPLICES AFTER FINAL BOLTING WILL BE AT NO COST TO HIGH STEEL STRUCTURES.

NOTICE: WEIGHTS OF MEMBERS LISTED ON THESE DRAWINGS ARE ESTIMATED WEIGHTS AND ACTUAL WEIGHTS WILL VARY. HIGH STEEL STRUCTURES, INC. WILL NOT BE RESPONSIBLE FOR ANY ERECTION PROCEDURES, SHIPPING PROCEDURES, ETC. DEVELOPED USING ESTIMATED WEIGHTS AS SHOWN. ALL DIMENSIONS ARE GIVEN HORIZONTALLY (U.N.). DIMENSIONS GIVEN THUS: (82'-11) ARE THE SHIPPING LENGTHS OUT TO OUT OF FASCIA GIRDERS.

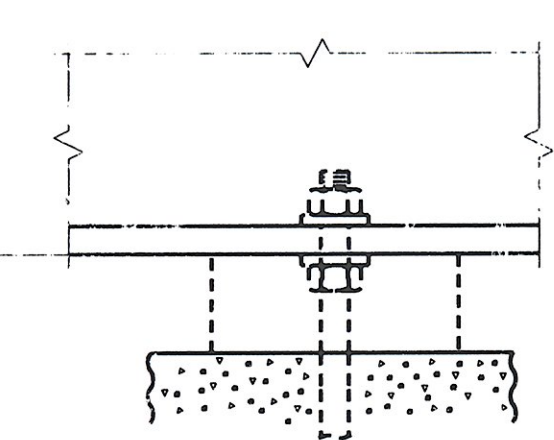
ERECTOR NOTE: ALL BOLTS MUST BE LOCATED IN ACCORDANCE WITH THE LIST OF FIELD CONNECTIONS. HIGH STEEL STRUCTURES WILL NOT BE RESPONSIBLE FOR FURNISHING ADDITIONAL BOLTS OR FOR ANY OTHER RELATED COSTS OR DAMAGES RESULTING FROM IMPROPER LOCATION OF BOLTS. ALL FIELD BOLTS THRU BOTTOM FLANGE ARE TO HAVE HEADS UP. (RCT) INDICATES ROTATIONAL CAPACITY TESTED BOLTS. DO NOT MIX NUTS, BOLTS AND WASHERS FROM DIFFERENT CONTAINERS UNLESS ALL NUTS, BOLTS AND WASHERS HAVE THE SAME LOT NUMBER. ALL FIELD BOLTS THRU WEB OF FASCIA GIRDERS TO HAVE HEADS ON OUTSIDE OF WEB. SEE DRAWING SA1 & SA2 FOR MATCH MARKING SYSTEM. WORK THIS DRAWING WITH DRAWING E2.

SHIPPING GROUP A1		SHIPPING GROUP B1		SHIPPING GROUP C1	
SHIPPING PIECE MARK	QUANTITY	SHIPPING PIECE MARK	QUANTITY	SHIPPING PIECE MARK	QUANTITY
G1A	1	G1B	1	G1C	1
G2A	1	G2B	1	G2C	1
G3A	1	G3B	1	G3C	1
G4A	1	G4B	1	G4C	1
G5A	1	G5B	1	G5C	1
CF1	1	CF5	4	CF5	5
CF2	1	CF6	4	CF6	4
CF3	1	CF7	4	CF7	5
CF4	1	CF8	4	CF8	5
CF5	4	CF10	1	CF9	1
CF6	4	CF11	1		
CF7	4	CF12	1		
CF8	4	CF13	1		

RECEIVED
 CK'D BY: J.S. OK'D BY: J.S.L.
 AUG 18 2008
 RESUBMIT APPROVED
 BY: KMH DATE: 8/19/08

CONTRACTOR NOTE:

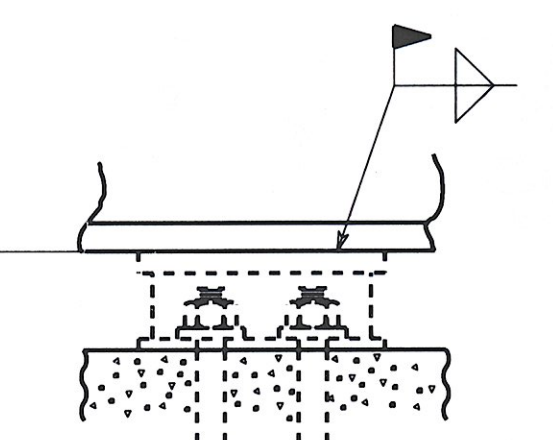
ELEVATIONS ARE GIVEN TO BOTTOM OF STEEL - DO NOT POUR TO FINAL ELEVATIONS WITHOUT VERIFICATION OF BEARING HEIGHTS AND BRIDGE SEATS.



SECTION A

CONTRACTOR NOTE:

ELEVATIONS ARE GIVEN TO BOTTOM OF STEEL - DO NOT POUR TO FINAL ELEVATIONS WITHOUT VERIFICATION OF BEARING HEIGHTS AND BRIDGE SEATS.



SECTION B

ELEVATIONS

LINE	ABUT. 1	PIER	ABUT. 2
G1	742.410	741.219	738.310
G2	741.940	740.759	737.840
G3	741.560	740.339	737.460
G4	741.100	739.871	737.000
G5	740.630	739.401	736.530

CONTRACTOR PLEASE NOTE: ANCHOR BOLTS AT ABUTMENTS MUST BE SET IN PLACE BEFORE GIRDERS ARE ERECTED. NUT MAY BE TIGHTENED TO FACILITATE STEEL GIRDER ERECTION.

NO.	REVISION	BY	CHK'D	DATE
ERECTOR FRAMING PLAN				
VT ROUTE 100 (MINOR ARTERIAL) OVER WHITE RIVER VT ROUTE 100 STA. 141+39.00 TO STA. 143+61.00 TOWN OF STOCKBRIDGE, COUNTY OF WINDSOR, VERMONT				
STATE OF VERMONT AGENCY OF TRANSPORTATION				
SCALE	STATE CONT. OR REF. NO.	PROJECT NO. (STP) BR	FED. AID PROJ. NO.	
N.T.S.		013-4(21)		
GENERAL CONTRACTOR	WINTERSET, INC.		HSSI PROJ. MGR	DEB KUPRES
SHPMT	DRAWING MANAGER	MADE BY	CHK'D BY	DATE
1	KREIDER (IH)	MAF	CS	6-24-08
STATE	PROJECT NUMBER	HSSI STRUCT. ID	DRAWING NUMBER	
VT	S-1080077	A	E1 OF E2	

ENGLISH
 Scale = .0104166667 Feet/Foot
 SHIPMENT 01
 PLOTTER: 6/25/2003 3:39:54 PM
 PROJECT: 5004327 PRD: 5004329 SHIPREC: 5004329