

MK	QTY	DESCRIPTION
2A	3	PMGT-395
2sp1	3	SOLE PLATE
2sf1	3	STAINLESS STEEL
2pf1	3	PTFE DISC
2ps1	3	PISTON
2pt1	3	POT PLATE
2ed1	3	ELASTOMERIC DISC
2br1	9	BRASS RING
2gb1	6	GUIDE BAR
2sg1	6	G.B. STAINLESS STEEL
2pg1	6	G.B. PTFE
2mp1	3	MASONRY PLATE
2FA	3	UNDERLAYMENT (*SL)
2B	12	ANCHOR ROD (*SL)
2C	12	HEAVY HEX NUT (*SL)
2D	12	PLATE WASHER (*SL)

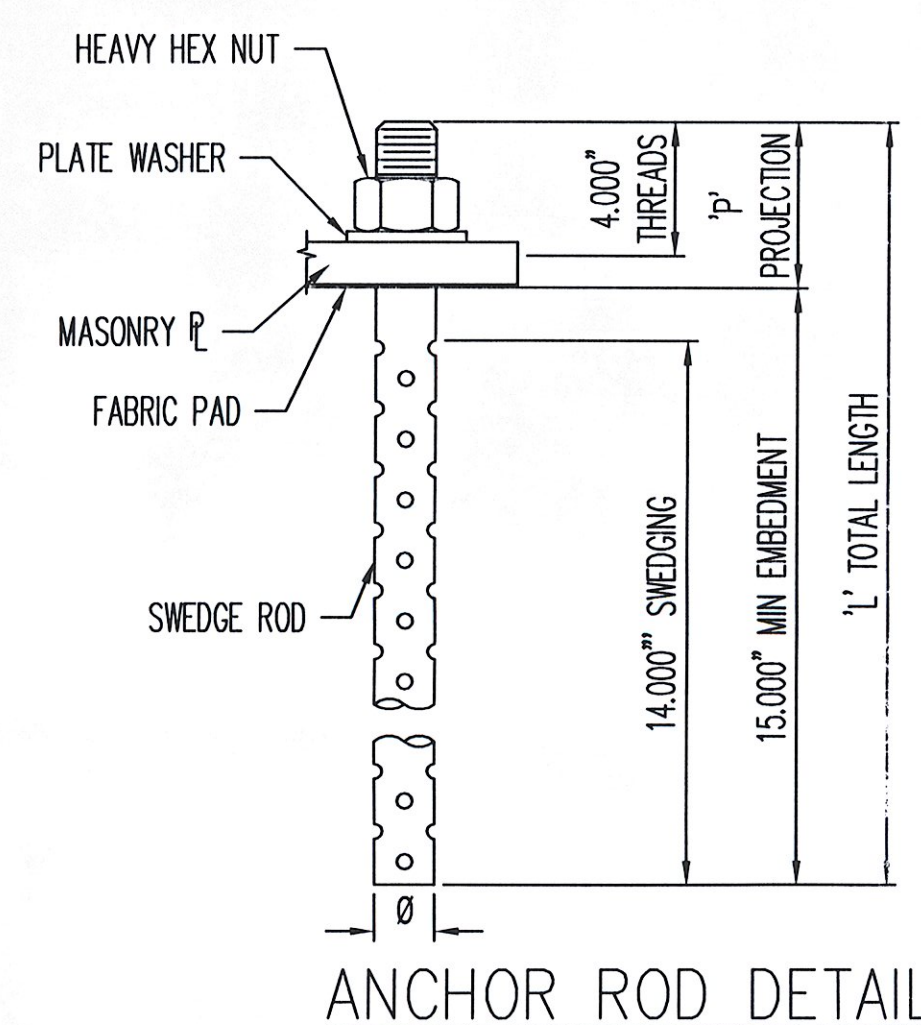
HLMR BEARING ASSEMBLY LOCATION & DESIGN INFORMATION (PMGT)													
MK	QTY	STRUCTURE	BEARING TYPE	LOCATION	VERT. CAP	HORIZ. CAP	LONG MVMNT	TRANS MVMNT	ROTATION (RAD)	HEIGHT DESIGNED	HEIGHT IN PLANS	DIFFERENCE IN PLANS	UNDERLAYMENT IN HEIGHT (Y/N)
2A	3	Bridge	PMGT-395	PIER: 1-3	395.0 kips	79.0 kips	0	0.500	0.03	7.794	10.063	-2.269	YES

ELASTOMERIC DISC SCHEDULE (PMGT)				
ASSEM MK	PIECE MK	QTY	ELASTOMERIC DISC DIMENSIONS	ELASTOMER MATERIAL
2A	2ed1	3	1.250 X 12.125Ø	Neoprene, 50+/-5 Duro Gr.3

BRASS RING SCHEDULE (PMGT)					
ASSEM MK	PIECE MK	QTY	BRASS RING DIMENSIONS	BRASS MATERIAL	
2A	2br1	9	0.094 X 0.375 X 12.125Ø	B36 Half-Hard	

PTFE DISC SCHEDULE (PMGT)				
ASSEM MK	PIECE MK	QTY	PTFE DIMENSIONS	PTFE DISC MATERIAL
2A	2pf1	3	0.188 X 12.000Ø	Pure Virgin Unfilled

GUIDE BAR PTFE SCHEDULE (PMGT)					
ASSEM MK	PIECE MK	QTY	GB PTFE DIMENSIONS	GB PTFE MATERIAL	
2A	2pg1	6	0.188 X 1.375 X 13.375	Pigmented	



'SR' Ø CHART

ASSEM MK	PIECE MK	TOTAL QTY	SR ROD Ø	'P' PROJ	'L' LENGTH
2B	2sr1	12	1.500	5.000	20.000

MAT'L: ASTM A449  
COATING: ASTM A153

HEAVY HEX NUT

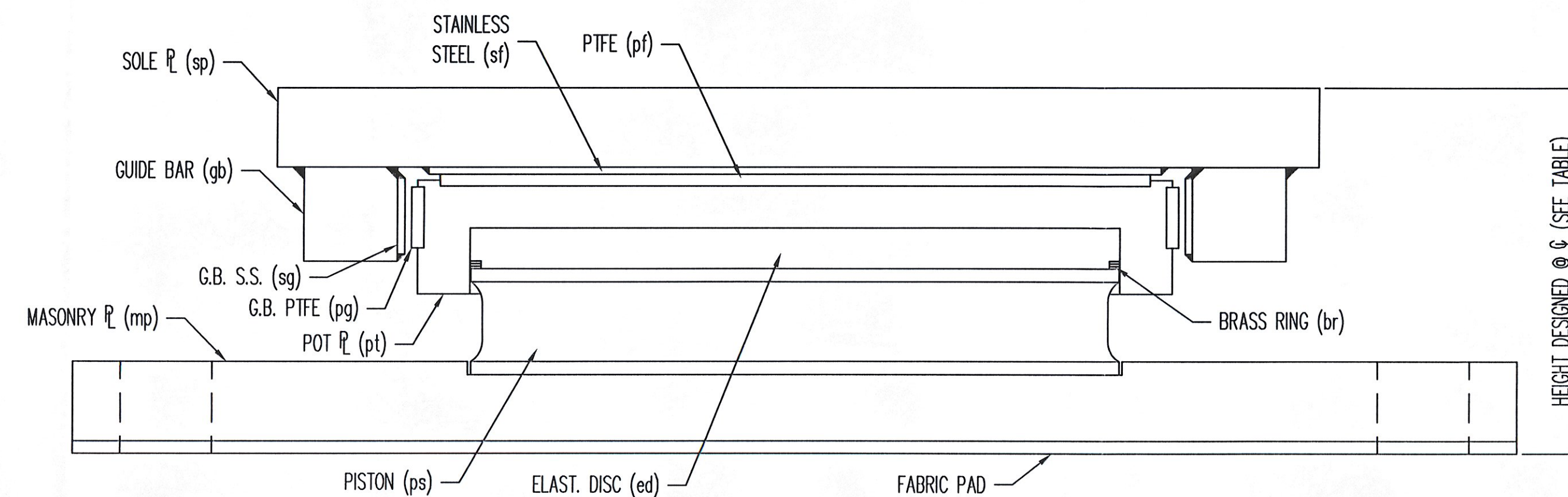
ASSEM MK	PIECE MK	TOTAL QTY	NUT Ø
2C	2hn1	12	1.500

MAT'L: ASTM A563-DH  
OR A194-2H  
COATING: ASTM A153

PLATE WASHER

ASSEM MK	PIECE MK	TOTAL QTY	PLATE WASHER
2D	2fw1	12	0.375 X 3.000 W/1.563Ø HOLE @ CTR

MAT'L: ASTM A36 COATING: ASTM A123



UNI-DIRECTIONAL BEARING ASSEMBLY

RECEIVED  
BY: JEL  
DATE: 6/24/08  
APPROVED: JEL  
(AS 10/28/08)

\* SL = SHIPPED LOOSE  
SEE SHT. 04 & 05 FOR SUB-ASSEMBLY DETAILS.  
SEE SHT. 001 FOR GENERAL NOTES & COATING LIMITS.  
ALL DIMENSIONS IN INCHES UNLESS OTHERWISE NOTED

**D.S. BROWN**  
THE D.S. BROWN COMPANY  
300 E. CHERRY STREET  
NORTH BALTIMORE, OHIO 45872  
419.257.3561  
FAX: 419.257.0332  
WWW.DSBROWN.COM

REV.	DESCRIPTION	DATE	DET.	CKD.
	LOCATION — VT RTE. 100 (MINOR ARTERIAL) OVER WHITE RIVER		ITEM	QUANTITY
	PROJECT — (STP) BR# 013-4(21)		23160-1112-1	3 OF 3
	P.O. NO. — C2120			
	DESIGNER — VT DOT			
	CUSTOMER — WINTERSET, INC.			
DESCRIPTION: UNI-DIRECTIONAL HLMR ASSEMBLY & DESIGN DETAILS		SCALE: N.T.S.	DRAWN BY: DA	CREATED BY: RSS
WINDSOR CO., VT		PROJECT NUMBER: 23160	PRODUCT CODE: 1112	DATE: 5/29/08
		RELEASE: 1	SHEET: 1	02