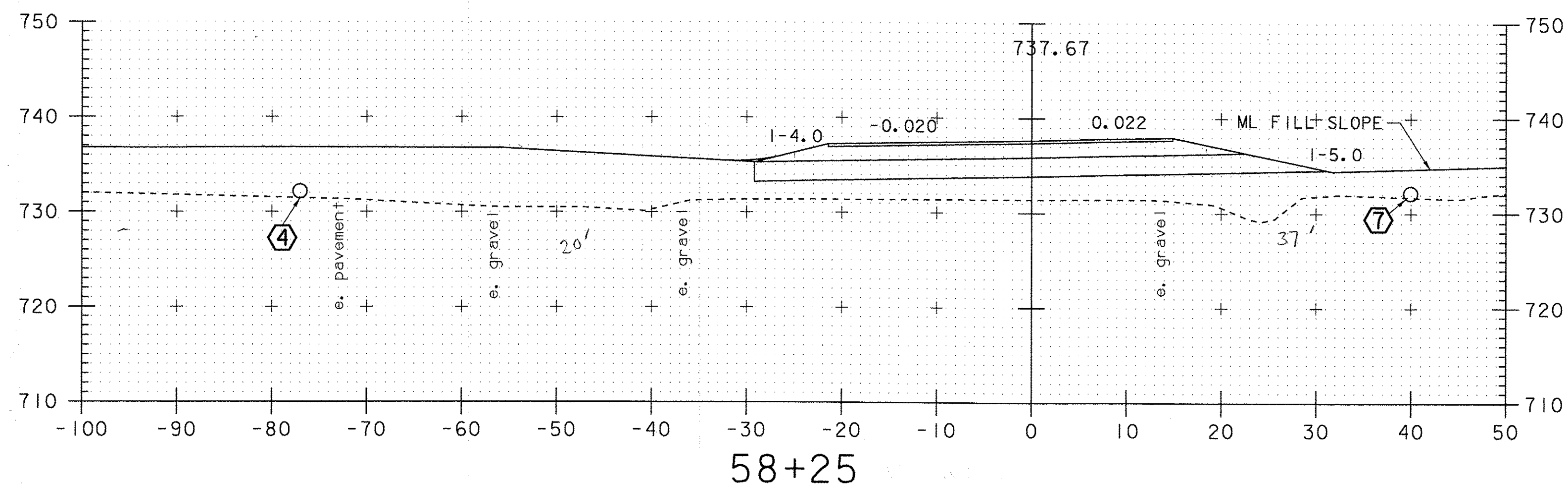
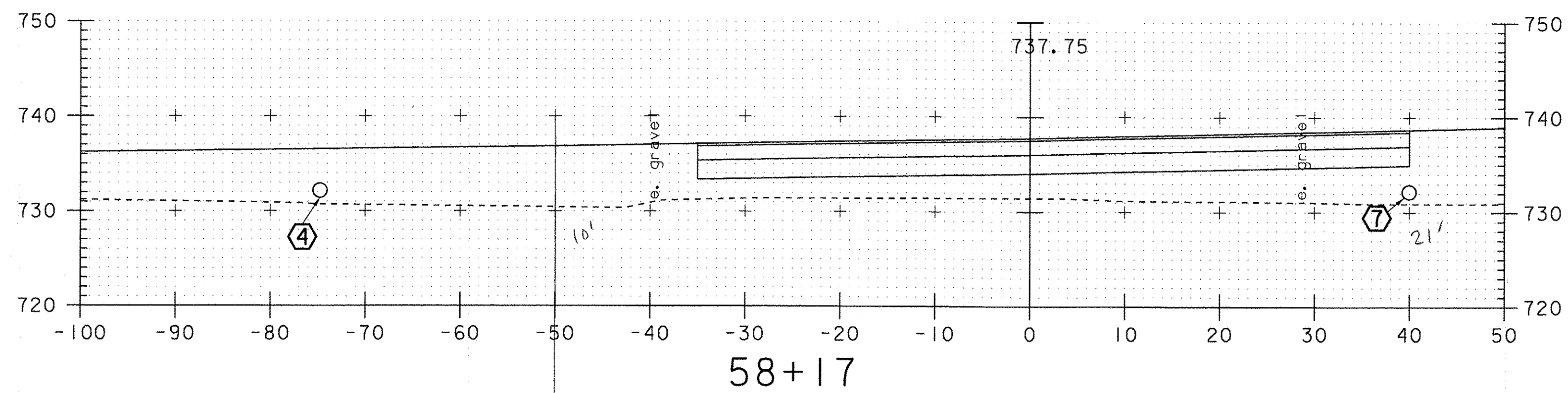


EB = 185.08 ft<sup>2</sup>  
 DGCS = 54.95 ft<sup>2</sup>  
 Sand = 92.28 ft<sup>2</sup>  
 Agg Surface = 8.17 ft<sup>2</sup>

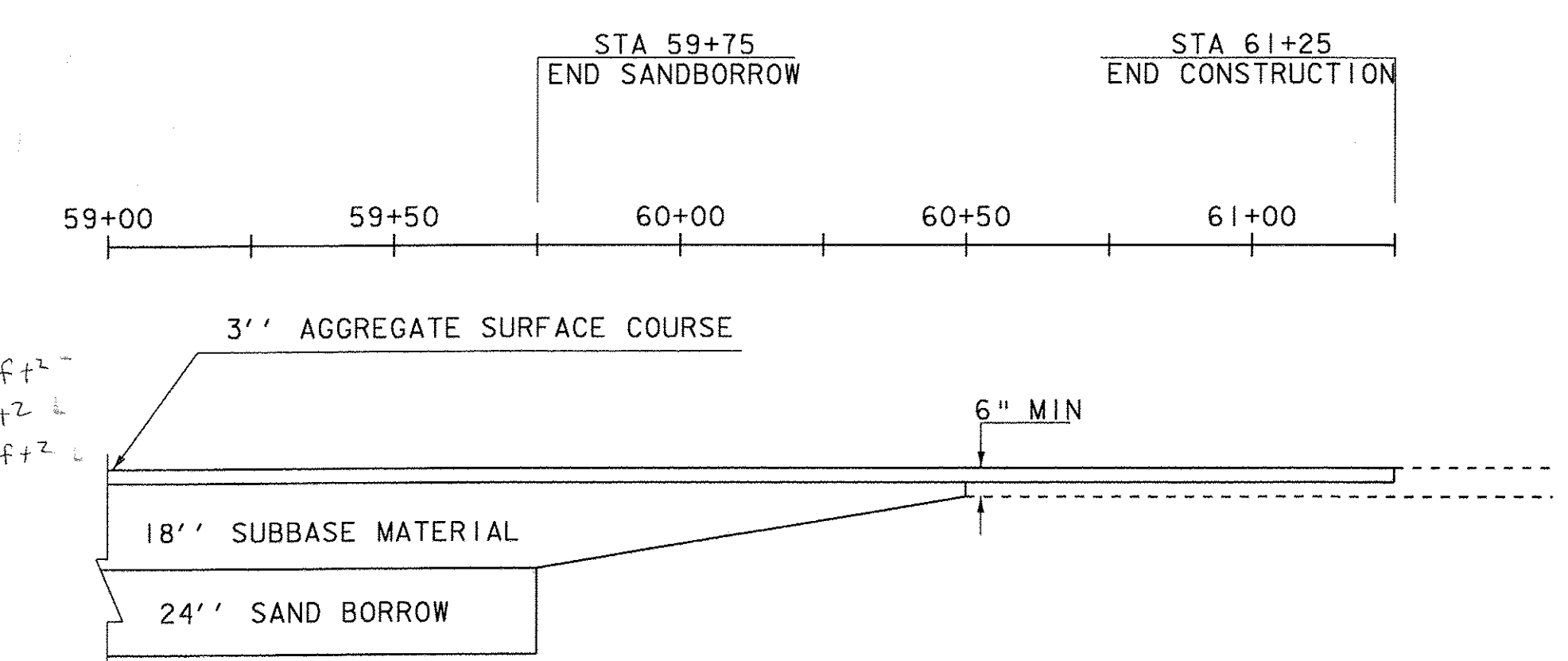


EB = 213.36 ft<sup>2</sup>  
 DGCS = 67.83 ft<sup>2</sup>  
 Sand = 113.90 ft<sup>2</sup>



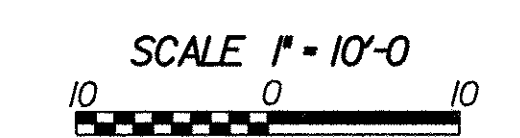
EB = 380.22 ft<sup>2</sup>  
 DGCS = 112.51 ft<sup>2</sup>  
 Sand = 150.01 ft<sup>2</sup>

BEGIN CONSTRUCTION



TIMBER HAWK ROAD  
 SUBBASE TRANSITION

NTS



NRC 12/16/09  
 DCB 1/19/11

**TIMBER HAWK ROAD  
 CROSS SECTIONS  
 STA. 58+17 - STA. 58+50**

PROJECT NAME- STOCKBRIDGE	PLOT DATE- 06-FEB-2008
PROJECT NUMBER- BR 013-4 (21)	DRAWN BY- G. SHANGRAW
FILE NAME- /78 f238/str5/df268xsl.dgn	CHECKED BY- T. FILLBACH
DESIGNED BY- T. SUMNER	SHEET 126 OF 144