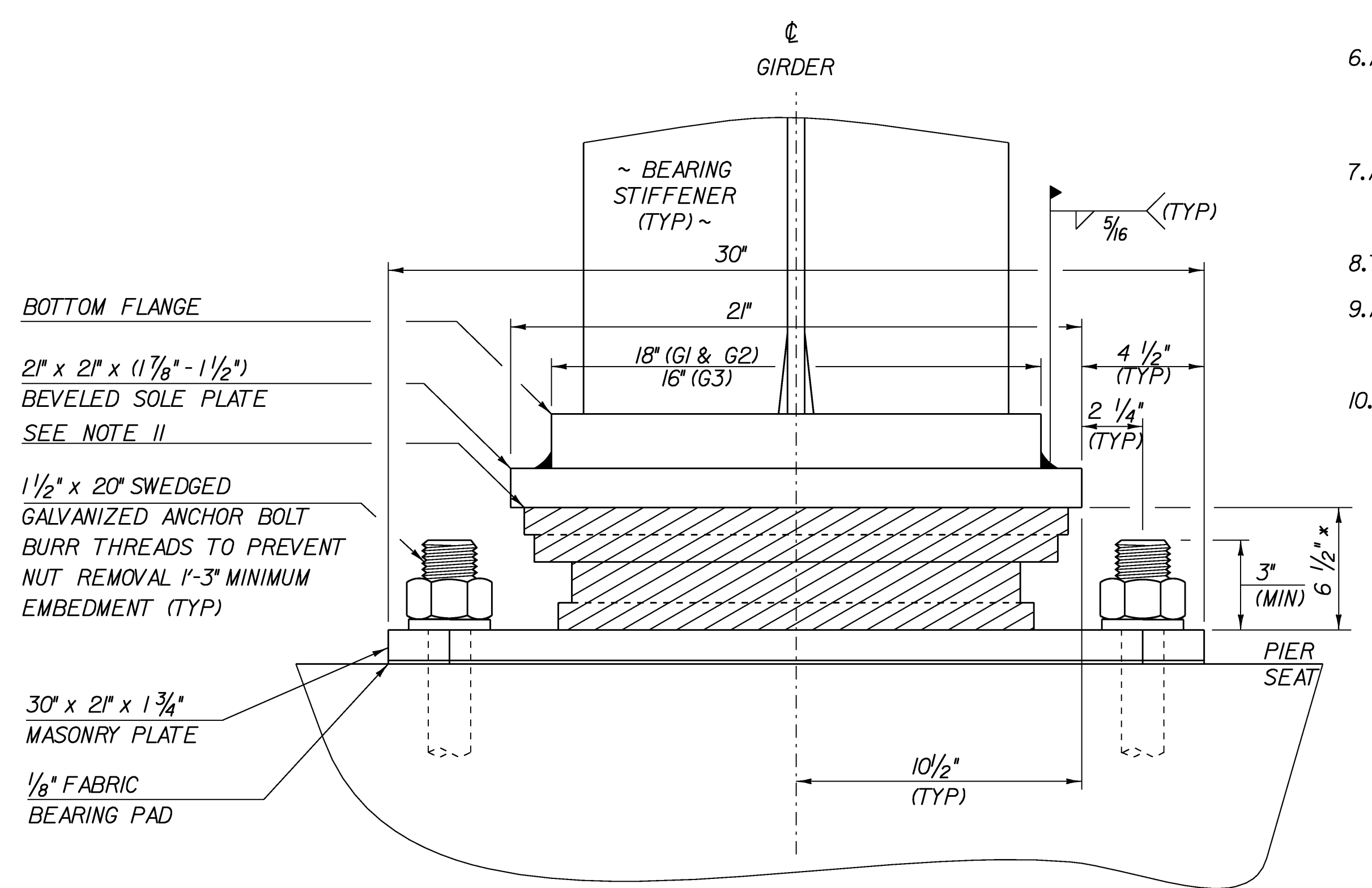
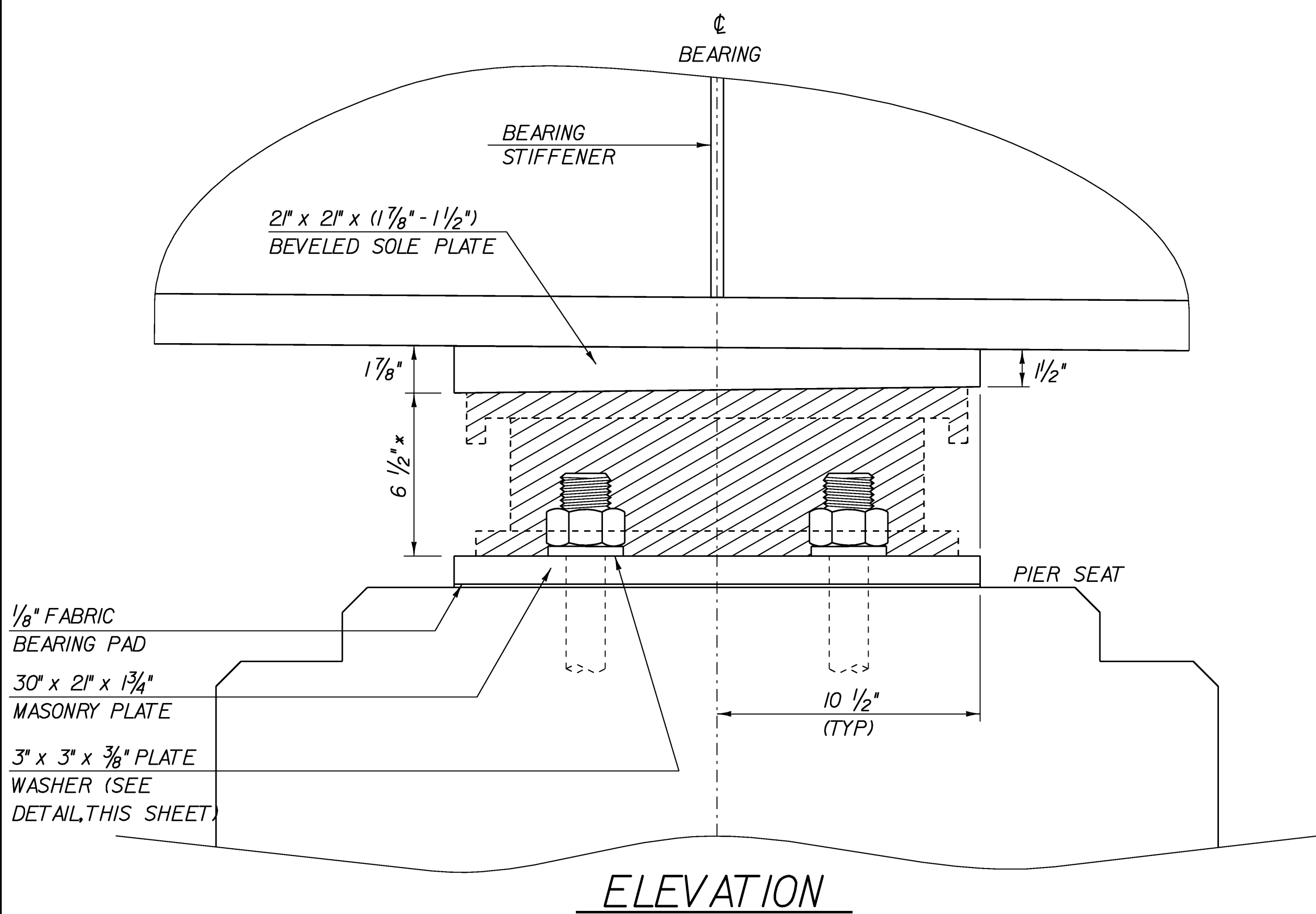
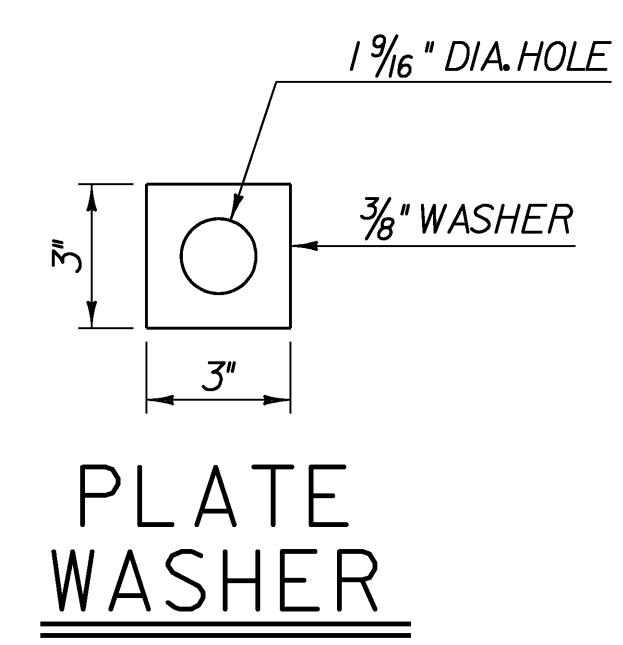


LEGEND	
□	FIXED POT BEARING
○	GUIDED POT BEARING
○	INTEGRAL ABUTMENT BEARING

PIER BEARING NOTES

- Pier bearings shall conform to applicable subsections of Sections 531 and 731.
- Pier bearings shall be paid for under Item 531J2 "Bearing Device Assembly, Pot".
- The concrete surface under the bearing device shall be level.
- Design Criteria:
 - Base plate to concrete design pressure = 1.20 ksi maximum.
 - Minimum allowable design rotation = 0.016 radians.
 - Horizontal capacity shall be a minimum of 20% of the vertical load.
 - Vertical design load per bearing (unfactored) at pier = 395 K
- Anchor bolts shall be ASTM A-449 and have a minimum embedment of 1'-3" into the concrete and shall conform to subsection 714.08.
- All bearing devices shall be galvanized or metalized as per subsections 531.04(b) and 506.15. Areas of galvanizing or metalizing damaged by field welding or handling shall be painted with a zinc rich paint in accordance with Section 513. The inside of the pots shall not be galvanized or metalized.
- All anchor bolts, nuts and washers shall be galvanized. All washers shall be 3/8" plate (minimum). Payment for drilling and grouting of anchor bolts, nuts, and washers shall be included in the bid price for "Bearing Device Assembly, Pot".
- The Contractor may submit designs for alternate bearings for approval.
- All bearings shall be marked prior to shipping. The marks shall include the bearing location on the bridge, and a direction arrow that points up-station. All marks shall be permanent and be visible after the bearing is installed.
- Connection between bearing and sole plate shall be designed and detailed by the bearing supplier.



* SEE FINAL FABRICATION DRAWINGS FOR EXACT DIMENSIONS. BRIDGE SEATS MAY NEED ADJUSTMENT. THE CROSS HATCHED COMPONENTS OF THE BEARING ARE SHOWN FOR REPRESENTATIVE PURPOSES ONLY. THE ACTUAL CONFIGURATION OF THE COMPONENTS WILL BE DEPENDENT UPON THE BEARING FABRICATOR.

GUIDED POT BEARINGS AT PIER - GIRDERS 1, 2, & 3

PROJECT NAME: STOCKBRIDGE	PLOT DATE: 06-FEB-2008
PROJECT NUMBER: BRF 013-4(21)	DRAWN BY: R. PELLETT
FILE NAME: /78f238/str5/sf238sup.dgn	CHECKED BY: T. FILLBACH
PROJECT LEADER: K. HIGGINS	SHEET 81 OF 144
DESIGNED BY: T. SUMNER	

