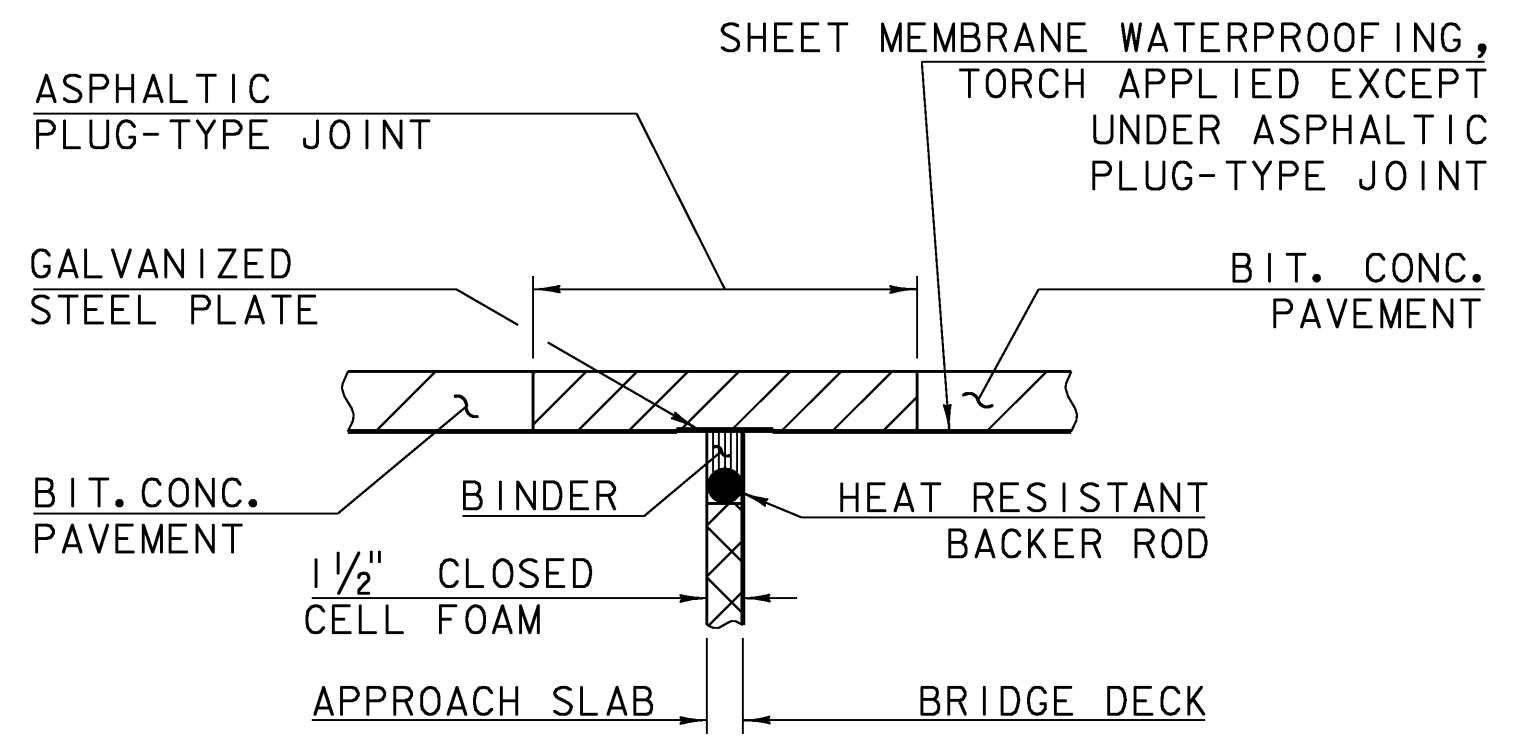


ASPHALTIC PLUG BRIDGE JOINT

- INSTALLATION:**
1. THE JOINT SHALL BE LOCATED CENTRALLY OVER THE DECK EXPANSION GAP OR FIXED JOINT MARKED OUT TO THE MANUFACTURER'S RECOMMENDED WIDTH.
 2. THE JOINT SHALL BE EXCAVATED AS SHOWN ON THE PLANS BY USE OF SAWS AND PNEUMATIC HAMMER OR A HAMMER AND CHISEL.
 3. THE JOINT AREA SHALL BE BLAST CLEANED OF DEBRIS AND ASPHALT. THE JOINT AREA SHALL BE THOROUGHLY DRIED USING HOT COMPRESSED AIR PRIOR TO APPLYING BINDER MATERIAL.
 4. SPALLED AND DEFECTIVE CONCRETE SHALL BE REPAIRED WITH AN APPROVED MATERIAL AS AGREED UPON BY THE ENGINEER.
 5. PROPERLY SIZED HEAT RESISTANT BACKER ROD SHALL BE PLACE IN THE MOVEMENT GAP ALLOWING FOR 25 MM (1 INCH) +/- OF BINDER ABOVE THE ROD.
 6. THE BINDER MATERIAL SHALL BE HEATED AND PLACED AS RECOMMENDED BY THE MANUFACTURER.
 7. PLACE 6 MM (1/4 INCH) THICK BY 200 MM (8 INCH) WIDE SECTIONS OF STEEL PLATE OVER THE CENTER OF THE MOVEMENT GAP. SECURE PLATES FROM MOVING BY INSERTING LOCATING PINS THROUGH THE PRESTAMPED HOLES INTO BACKER ROD AND COVER WITH HOT BINDER.



ASPHALTIC PLUG-TYPE JOINT DETAIL
N. T. S.

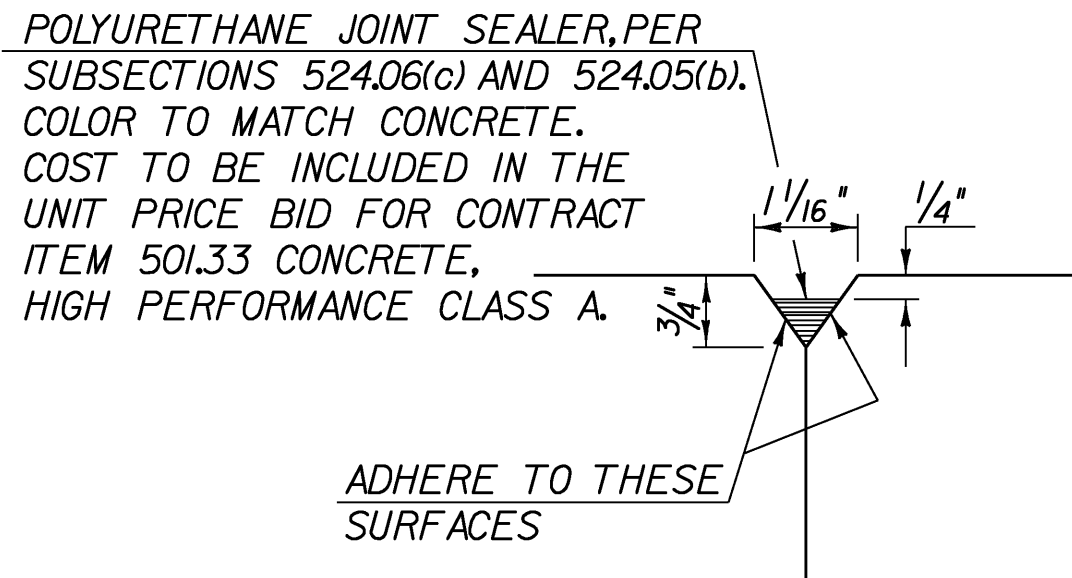
- A. THE STEEL PLATES MAY BE OMITTED WHERE THE APPROACH SLAB IS COVERED WITH A STONE BASE OR BITUMINOUS PAVEMENT AND VERTICAL MOVEMENT OF THE PLATES MIGHT OCCUR.
8. THE BINDER MATERIAL AND AGGREGATE SHALL BE HEATED AND MIXED AS RECOMMENDED BY THE MANUFACTURER.
 9. THE INSTALLATION OF MATERIAL, COMPACTION, AND TOPCOATING SHALL BE AS RECOMMENDED BY THE MANUFACTURER.
 10. IMMEDIATELY AFTER TOPCOATING, AN ANTI-SKID MATERIAL SHALL BE CAST OVER THE JOINT TO REDUCE THE RISK OF TRACKING.
 11. JOINT SHALL BE PROTECTED FROM TRAFFIC UNTIL THE MATERIAL HAS COOLED TO 52 C +/- (125 F).

- WEATHER LIMITATIONS:**
- BINDER MATERIAL SHALL BE APPLIED ONLY WHEN THE FOLLOWING CONDITIONS PREVAIL:
- (A) THE AMBIENT AIR TEMPERATURE IS AT LEAST 10 C (50 F) AND RISING.
 - (B) THE ROAD SURFACE IS SUFFICIENTLY DRY.
 - (C) WEATHER CONDITIONS OR OTHER CONDITIONS ARE FAVORABLE AND ARE EXPECTED TO REMAIN SO FOR THE PERFORMANCE OF SATISFACTORY WORK.

HORIZONTAL CONSTRUCTION JOINT

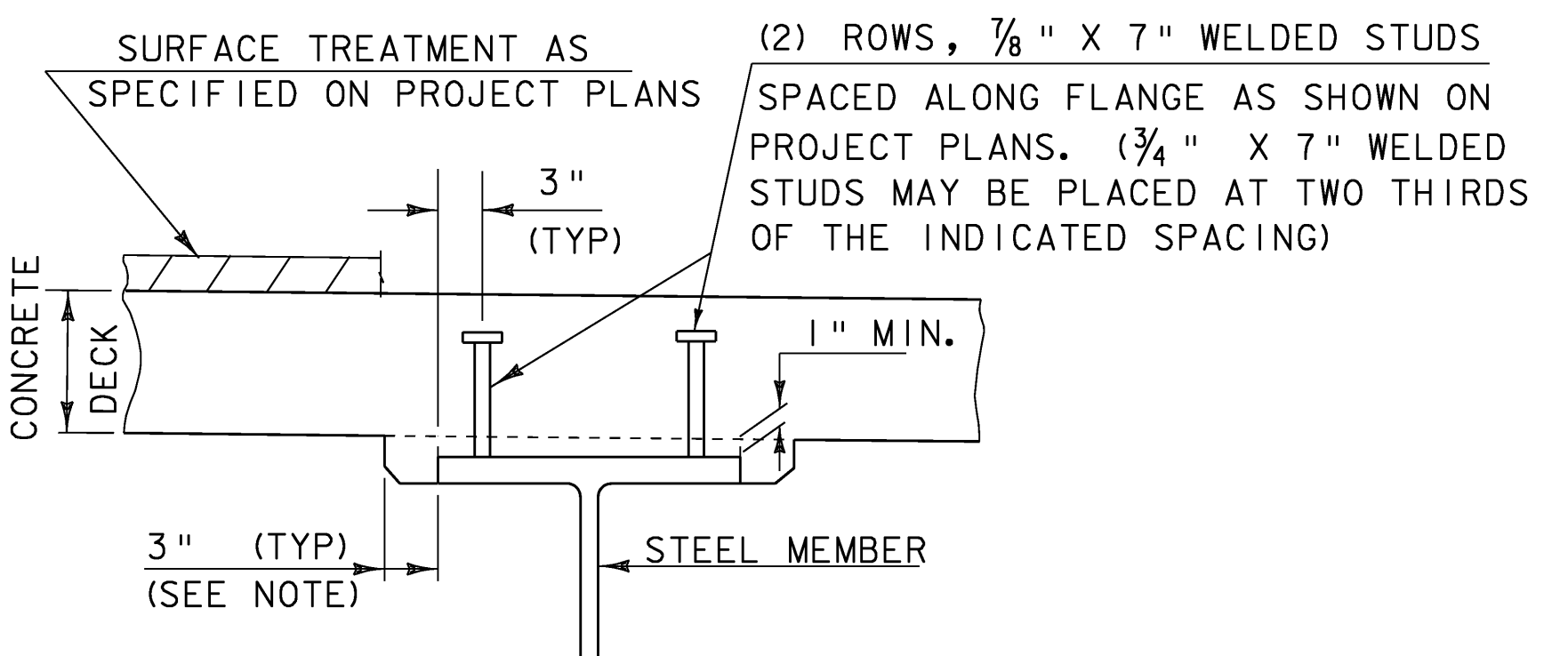
1. THE SURFACE OF THE CONCRETE CONSTRUCTION JOINTS SHALL BE CLEANED AND FREE OF LAITANCE AND SHALL BE ROUGHENED TO A FULL AMPLITUDE OF 1/4".
2. IMMEDIATELY BEFORE NEW CONCRETE IS PLACED, ALL CONSTRUCTION JOINTS SHALL BE WETTED AND STANDING WATER REMOVED.

- PILE NOTES:**
1. WELDING PROCEDURES TO BE APPROVED BY THE STRUCTURES ENGINEER PRIOR TO WELDING
 2. PREFABRICATED PILE SPLICE PLATES MAY BE USED WITH THE APPROVAL OF THE RESIDENT ENGINEER

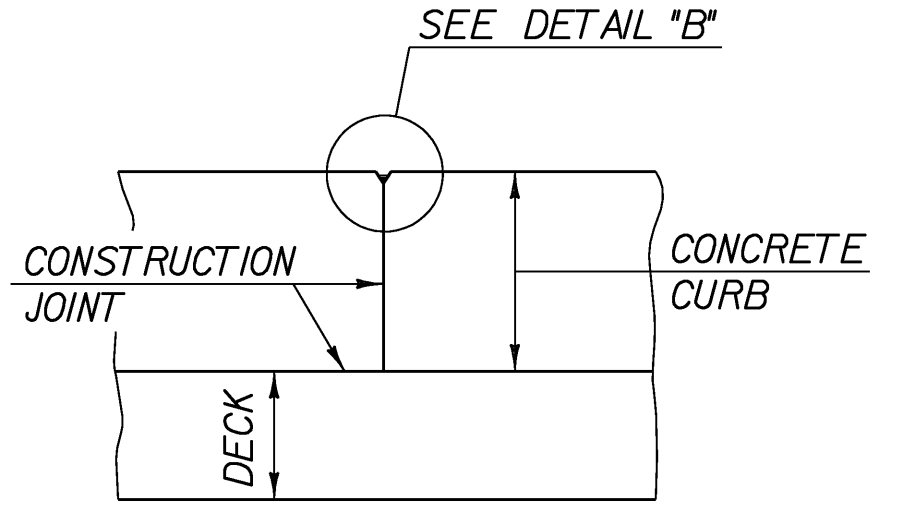


DETAIL "B"
NTS

HAUNCH AND SHEAR CONNECTOR DETAILS
(NOT TO SCALE)



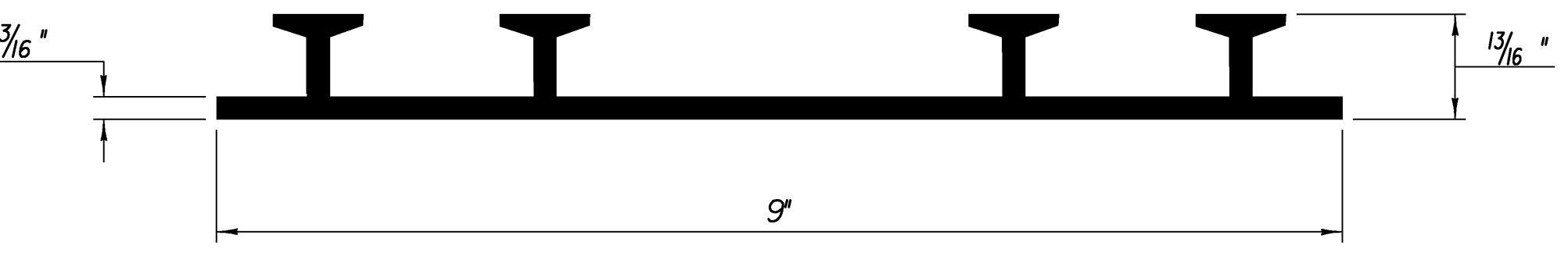
NOTE: THE 3" HORIZONTAL SECTION MAY BE ELIMINATED FOR FORMING SYSTEMS DESIGNED FOR THE CONSTRUCTION OF VERTICAL HAUNCHES. SYSTEMS SHALL BE SUBMITTED FOR APPROVAL TO THE STRUCTURES ENGINEER. ALL VOIDS SHALL BE FILLED WITH MORTAR, TYPE IV OR AN EQUIVALENT PRODUCT FROM THE APPROVED PRODUCTS LIST.



SECTION B - B
NTS

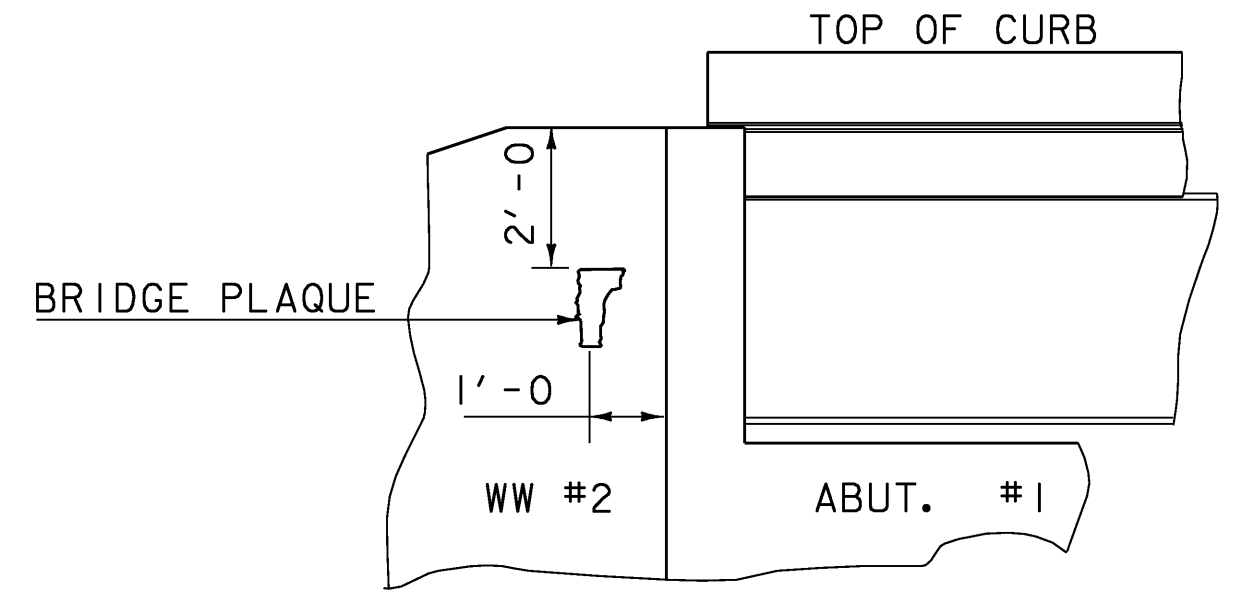
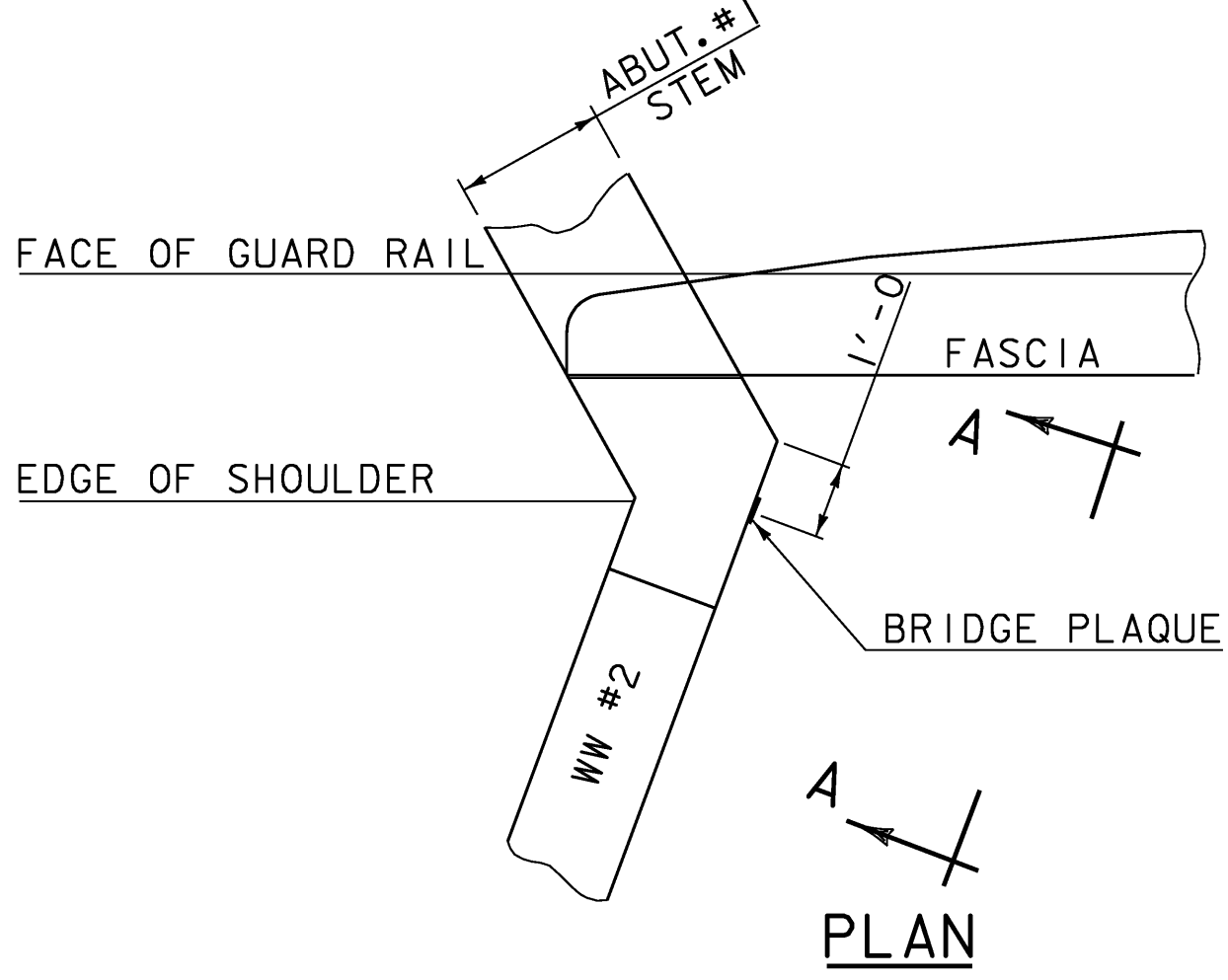
CURB DETAIL

A CONSTRUCTION JOINT SHALL BE PLACED IN THE CURB AT STATION 142+50 OVER THE PIER AND 10 FEET ON EITHER SIDE OF THIS STATION.



P.V.C. WATERSTOP FOR CONSTRUCTION JOINTS
N.T.S.

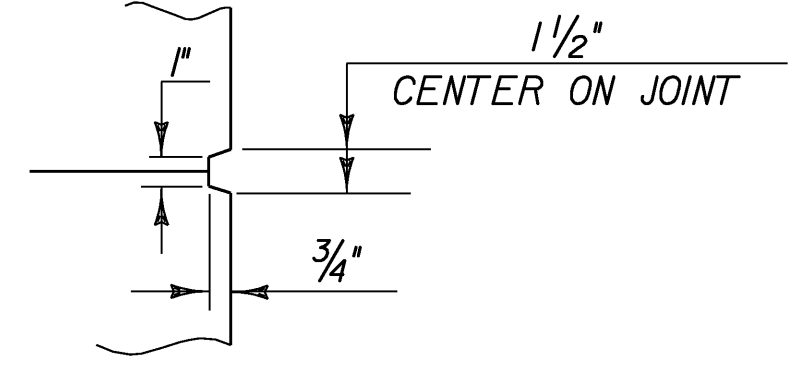
THE COSTS FOR P.V.C. WATERSTOP SHALL BE INCLUDED IN THE UNIT PRICE BID FOR CONTRACT ITEM 501.33 CONCRETE, HIGH PERFORMANCE CLASS A. OTHER CONFIGURATIONS MAY BE USED UPON APPROVAL OF THE STRUCTURES ENGINEER.



VIEW "A - A"

BRIDGE PLAQUE DETAIL
(NOT TO SCALE)

THE BRIDGE PLAQUE WILL BE SUPPLIED BY THE AGENCY OF TRANSPORTATION AND SHALL BE INSTALLED BY THE CONTRACTOR AT ABUTMENT #1 ON THE RIGHT SIDE AS SHOWN OR AS DIRECTED BY THE ENGINEER. PAYMENT FOR BRIDGE PLAQUE INSTALLATION SHALL BE INCIDENTAL TO CONTRACT ITEM 501.33 CONCRETE, HIGH PERFORMANCE CLASS A.



SCORE MARK DETAIL
NTS

MISCELLANEOUS DETAILS

PROJECT NAME:	STOCKBRIDGE	FILE NAME:	/78f238/str5/sf238sup.dgn	PLOT DATE:	06-FEB-2008
PROJECT NUMBER:	BRF 013-4(21)	PROJECT LEADER:	K. HIGGINS	DRAWN BY:	R. PELLET
		DESIGNED BY:	T. SUMNER	CHECKED BY:	T. FILLBACH
			sf238msd.l		SHEET 77 OF 144