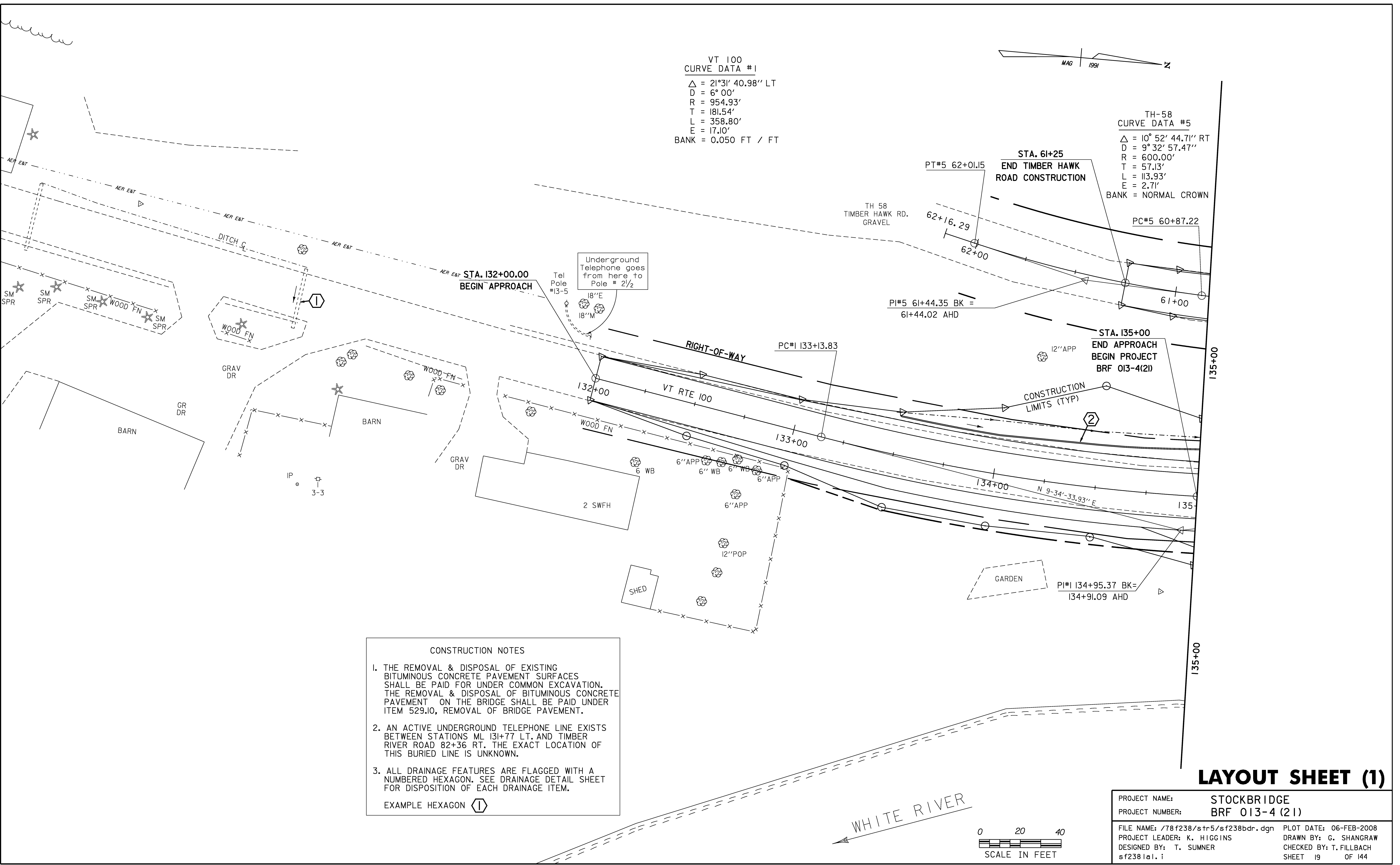
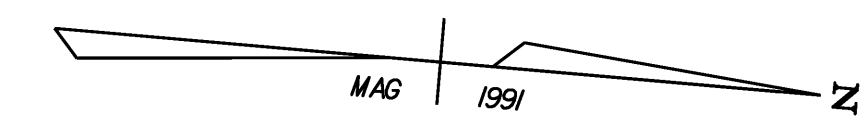


VT 100
 CURVE DATA #1
 $\Delta = 21^{\circ}31' 40.98''$ LT
 D = 6° 00'
 R = 954.93'
 T = 181.54'
 L = 358.80'
 E = 17.10'
 BANK = 0.050 FT / FT

TH-58
 CURVE DATA #5
 $\Delta = 10^{\circ} 52' 44.71''$ RT
 D = 9° 32' 57.47"
 R = 600.00'
 T = 57.13'
 L = 113.93'
 E = 2.71'
 BANK = NORMAL CROWN



STA. 132+00.00
 BEGIN APPROACH

STA. 61+25
 END TIMBER HAWK
 ROAD CONSTRUCTION

STA. 135+00
 END APPROACH
 BEGIN PROJECT
 BRF 013-4(21)

CONSTRUCTION NOTES

1. THE REMOVAL & DISPOSAL OF EXISTING BITUMINOUS CONCRETE PAVEMENT SURFACES SHALL BE PAID FOR UNDER COMMON EXCAVATION. THE REMOVAL & DISPOSAL OF BITUMINOUS CONCRETE PAVEMENT ON THE BRIDGE SHALL BE PAID UNDER ITEM 529.10, REMOVAL OF BRIDGE PAVEMENT.
2. AN ACTIVE UNDERGROUND TELEPHONE LINE EXISTS BETWEEN STATIONS ML 131+77 LT. AND TIMBER RIVER ROAD 82+36 RT. THE EXACT LOCATION OF THIS BURIED LINE IS UNKNOWN.
3. ALL DRAINAGE FEATURES ARE FLAGGED WITH A NUMBERED HEXAGON. SEE DRAINAGE DETAIL SHEET FOR DISPOSITION OF EACH DRAINAGE ITEM.

EXAMPLE HEXAGON

LAYOUT SHEET (1)

PROJECT NAME:	STOCKBRIDGE	PLOT DATE:	06-FEB-2008
PROJECT NUMBER:	BRF 013-4 (21)	DRAWN BY:	G. SHANGRAW
FILE NAME:	/78f238/str5/sf238bdr.dgn	DESIGNED BY:	T. SUMNER
PROJECT LEADER:	K. HIGGINS	CHECKED BY:	T. FILLBACH
DESIGNED BY:	T. SUMNER	SHEET	19 OF 144
sf2381a1.i			



WHITE RIVER