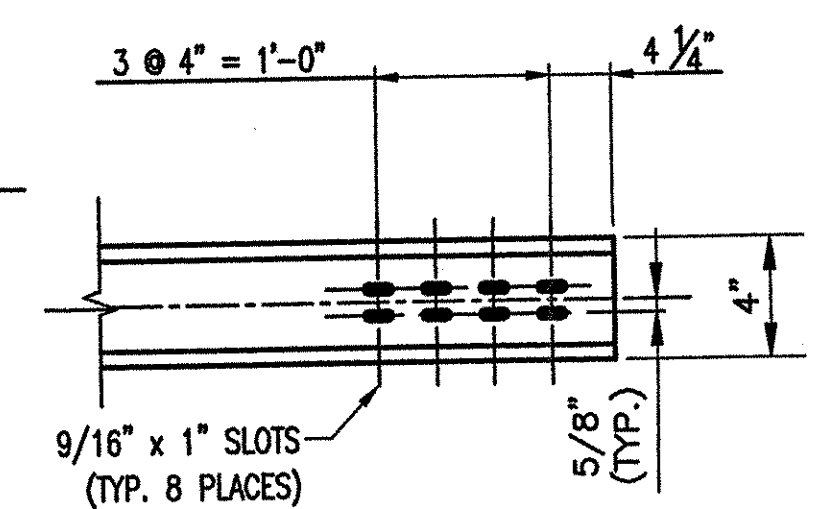
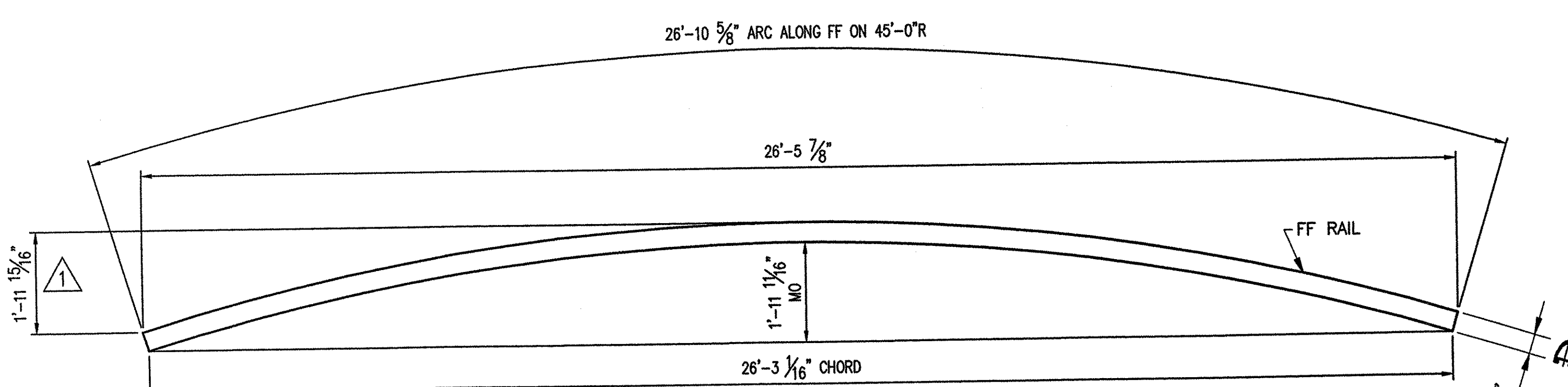


**2 REQ'D. ~ BENT RAIL 'C1'**  
 (PLAN VIEW)  
 (LENGTH ALONG FF = 20'-0 1/8" (+2'-0" FOR SHOP BEND = 22'-0 1/8"))

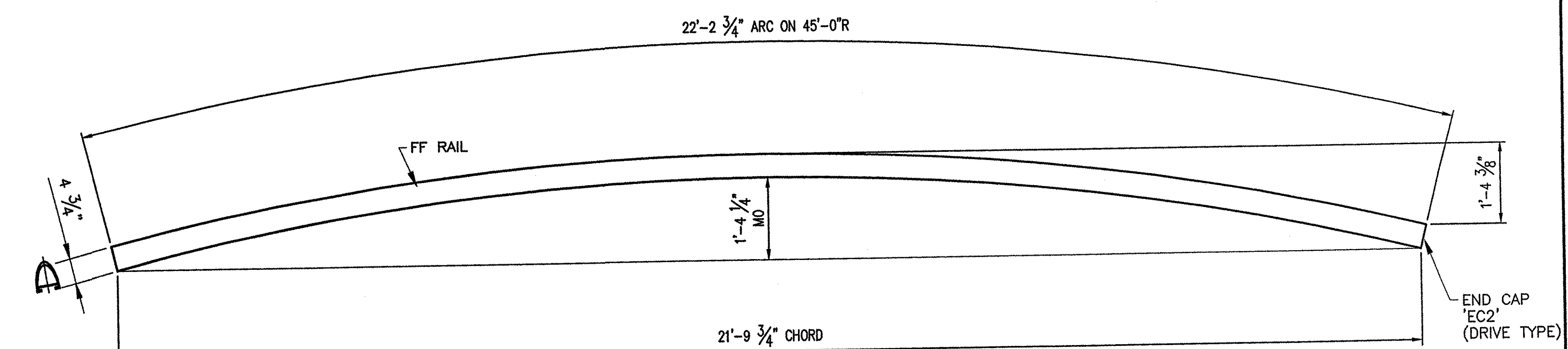
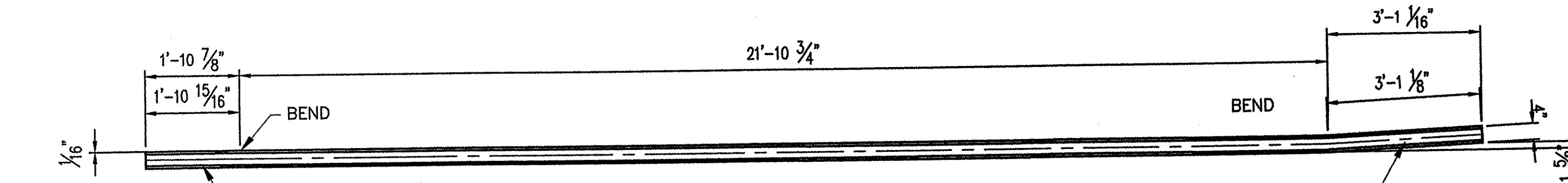


**DETAIL "A"**  
 (BACK ELEVATION VIEW)



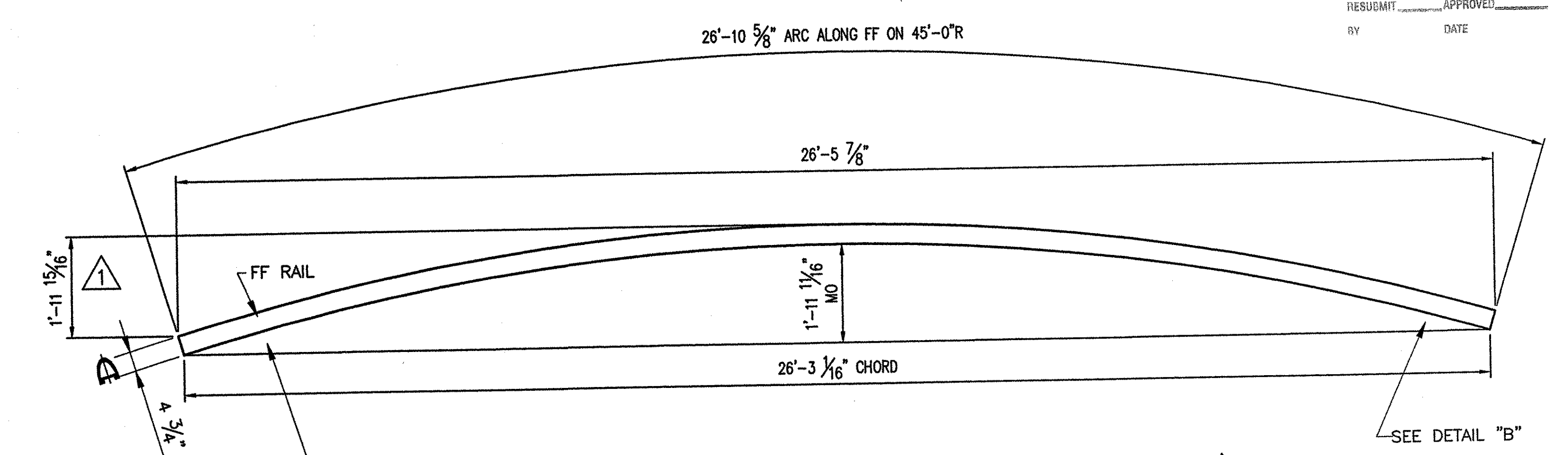
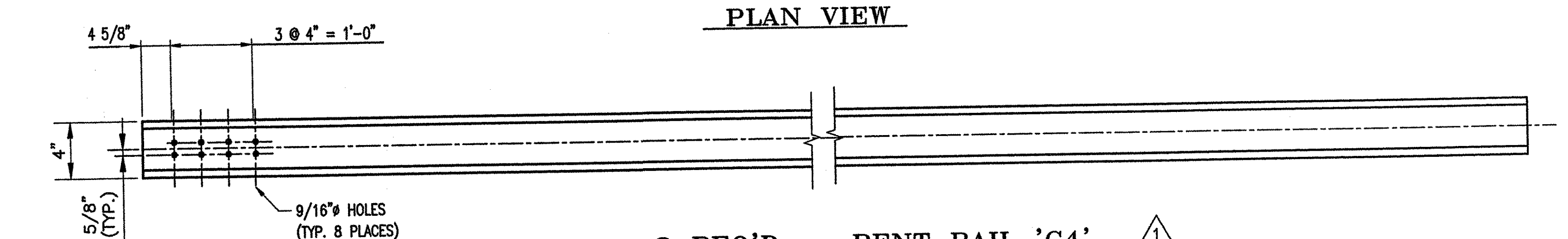
**PLAN VIEW**

**ONE REQ'D. ~ COMPOUND BENT RAIL 'C2'**  
 (BACK ELEVATION VIEW)  
 (LENGTH ALONG FF = 26'-10 5/8" (+4'-0" FOR SHOP BEND = 30'-10 5/8"))



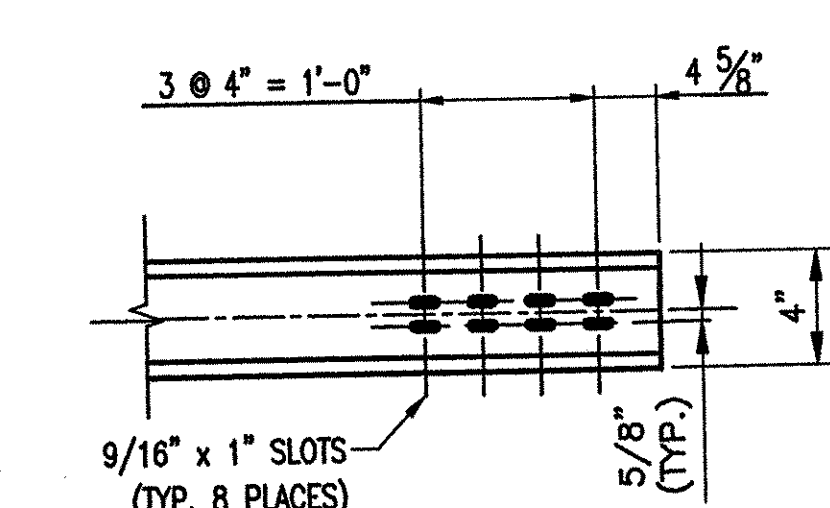
**PLAN VIEW**

**2 REQ'D. ~ BENT RAIL 'C4'**  
 (BACK ELEVATION VIEW)  
 (LENGTH ALONG FF = 22'-2 3/4" (+4'-0" FOR SHOP BEND = 26'-2 3/4"))



**ONE REQ'D. ~ BENT RAIL 'C3'**  
 (PLAN VIEW)  
 (LENGTH ALONG FF = 26'-10 5/8" (+4'-0" FOR SHOP BEND = 30'-10 5/8"))

SEE DETAIL "A" (SIM.)



**DETAIL "B"**  
 (BACK ELEVATION VIEW)

VTtrans  
 RECEIVED  
 ORDERED BY  
 JAN 12 2005  
 RESUBMIT APPROVED  
 BY DATE

BRIDGE No. 21  
 PROJ. No: BRS 0147(5)S  
 ITEM No: 621.74

APPROVED:	REC'D APPROVAL
DRAWING	
<b>L.B. FOSTER COMPANY</b>	
1016 GREENTREE ROAD PITTSBURGH, PENNSYLVANIA 15220	
FOR: BECK & BELLUCCI, INCORPORATED	
VERMONT AGENCY OF TRANSPORTATION	
TOWN OF ROYALTON, COUNTY OF WINDSOR	
BRIDGE APPROACH RAILING FOR VT RTE 14 OVER WHITE RIVER	
RAIL DETAILS	
MADE	CMS DATE 10/08/04 JOB No. ARO170 CUST. No.
CHECK	AW DATE 10/21/04 DRAWING LB13 REV. No. ONE

1	REVISED PER APPROVER COMMENTS	CMS	12 28 04
REV.	DESCRIPTION	BY	DATE