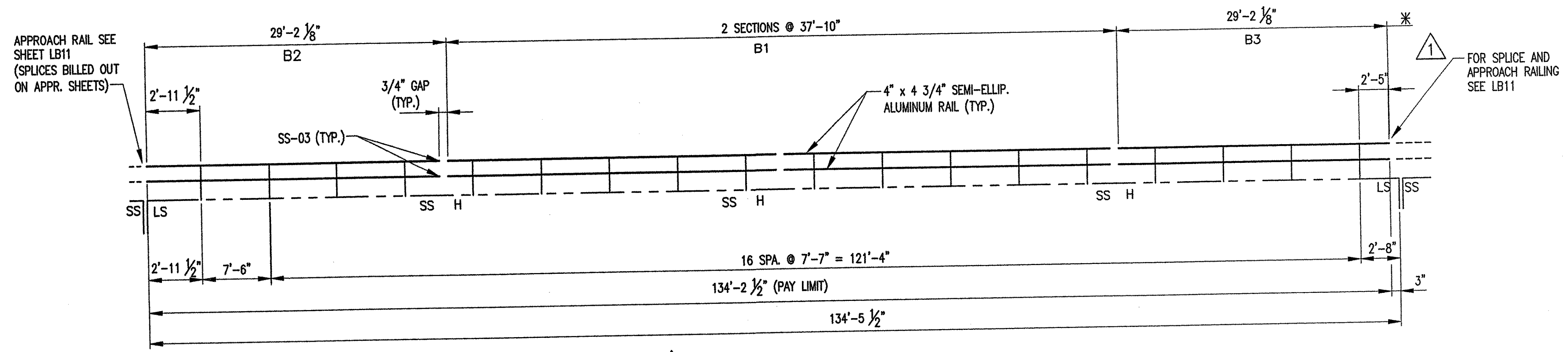
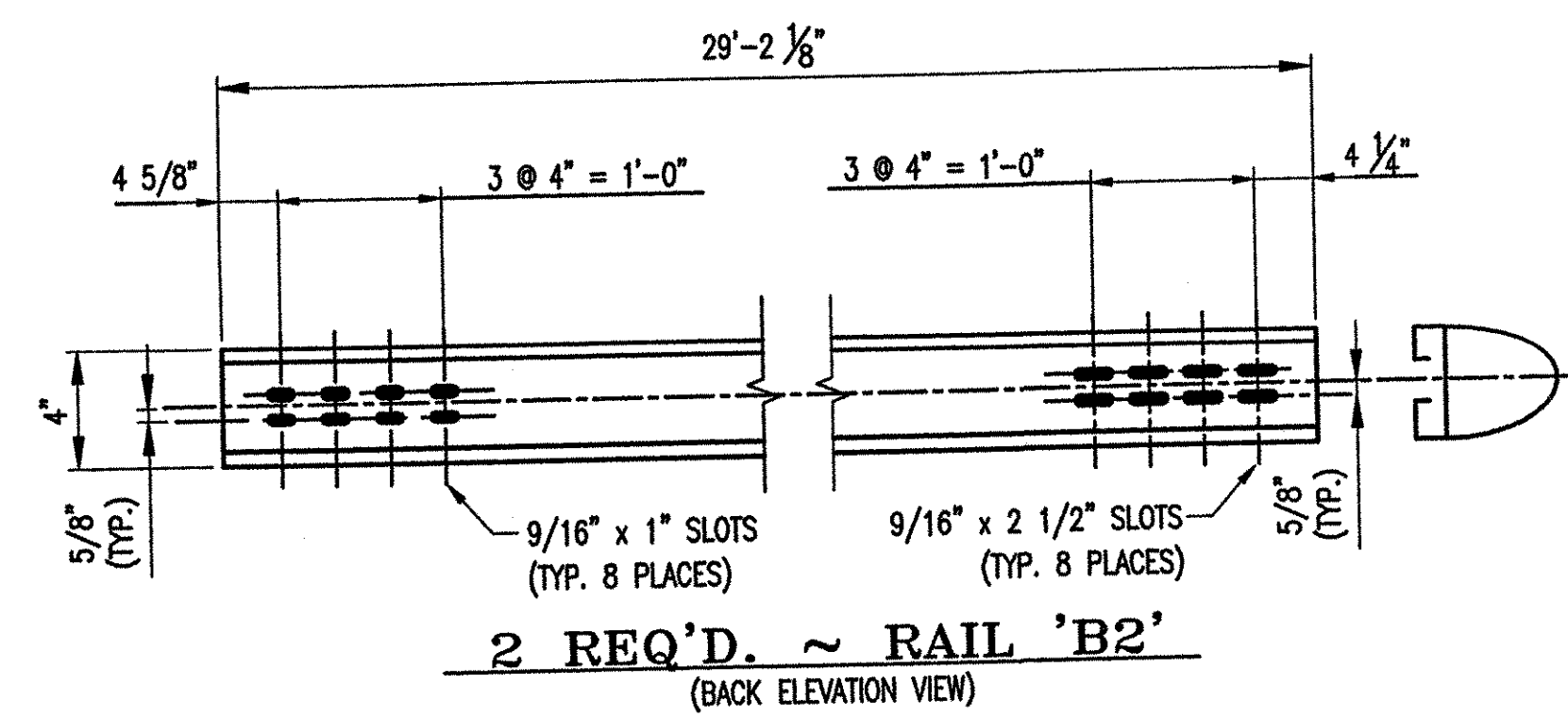
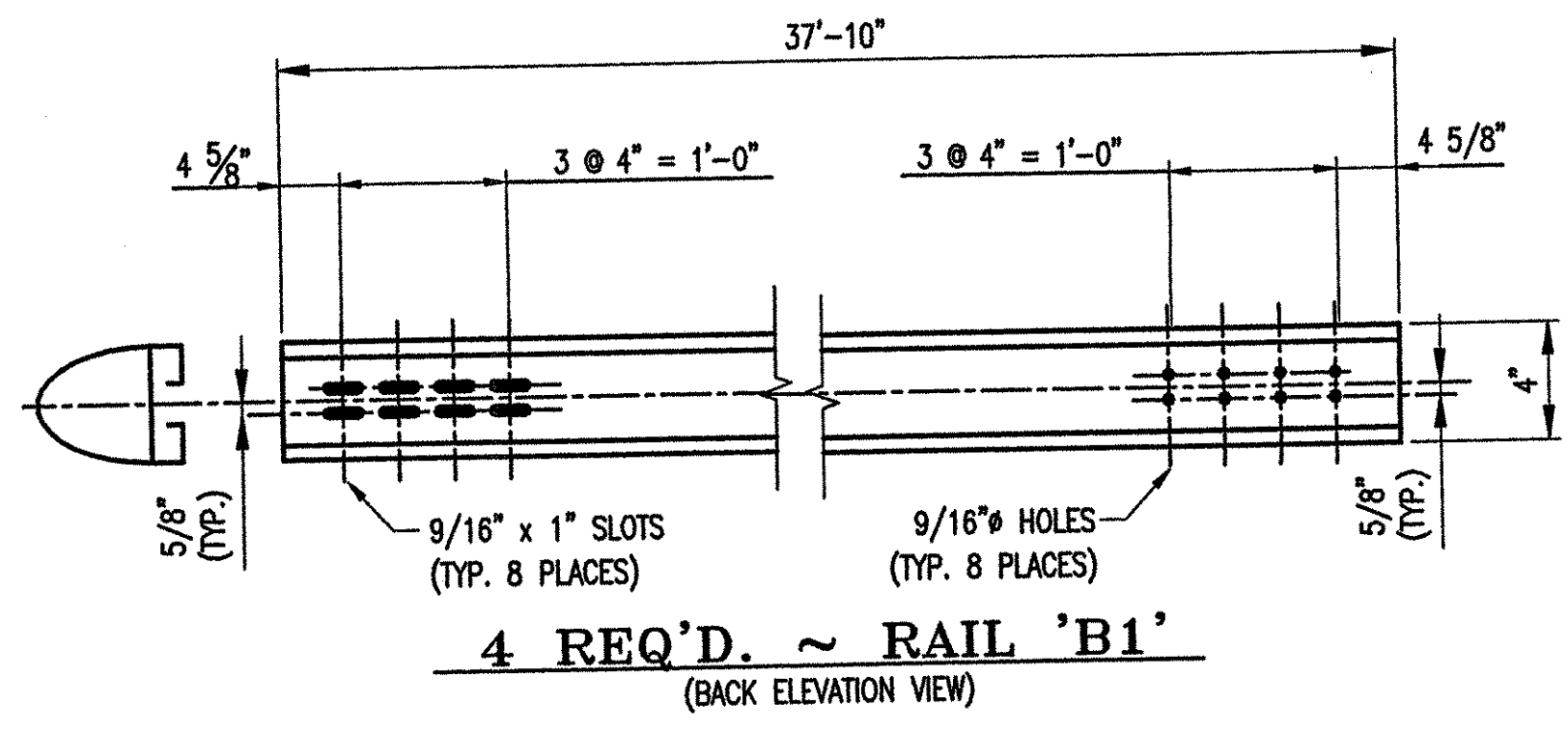
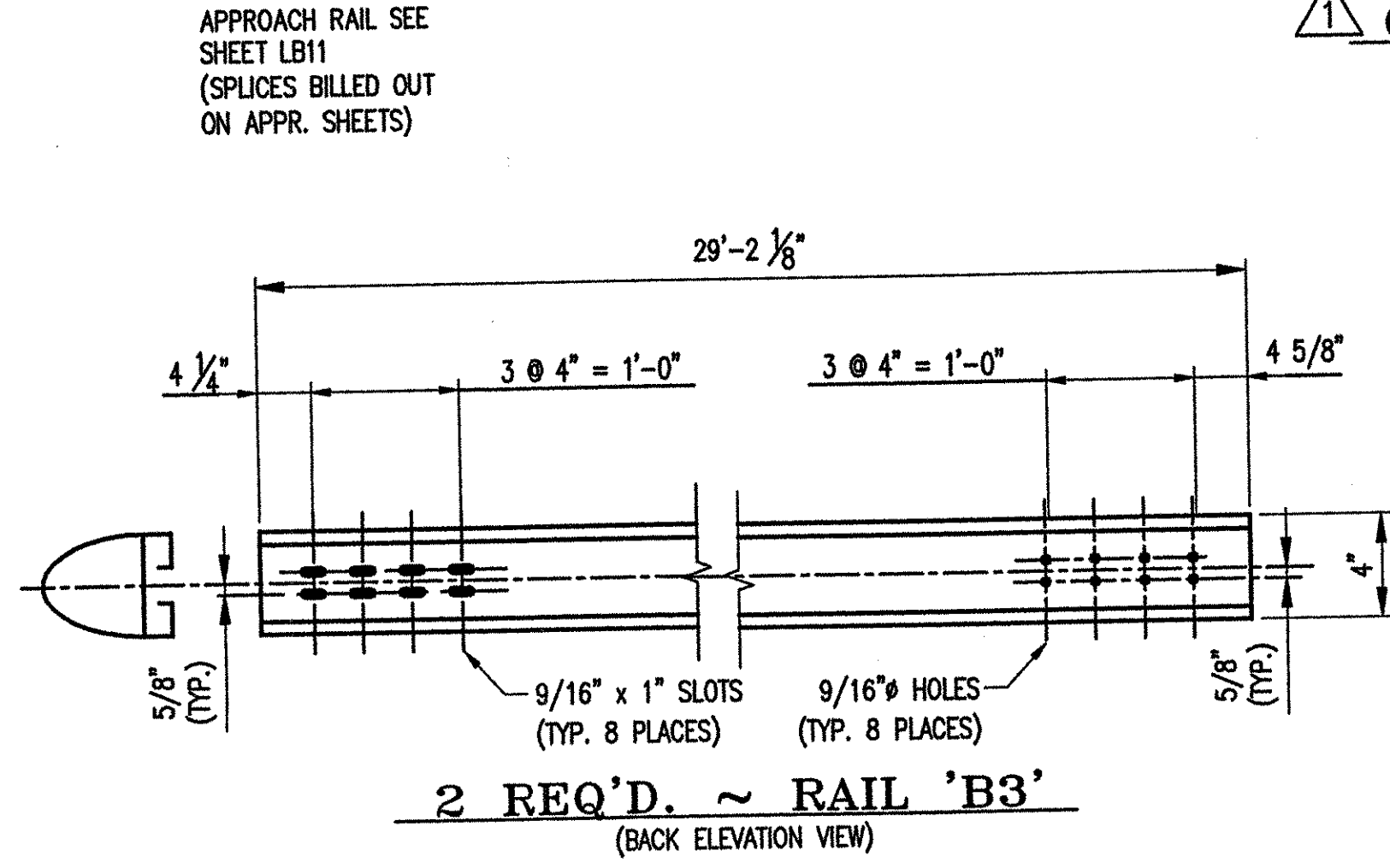


**BILL OF MATERIAL**

Mark	Total Quan.	Desc.	Th./Dia	Width	Width	Length		Remarks
			in.	in.	in.	Ft.	In.	
P1	18	POST Consisting of:						Curbside
pe1	18	EXTRUDED POST STEM				2	5 1/8	
be1	18	EXTRUDED POST BASE		10 3/4			10 3/4	
rv1	108	RIVET	7/8				2 3/8	Button Hd, Cone pt., Cold Driven
OB	18	OFFSET BLOCK H-SECTION		7 1/4	5 1/2	1	10 15/16	@ Barrier Rail
FB4	72	BOLT, HEX HD.	1/2				1 1/2	
FW1	72	WASHER	3/32	1 1/16	17/32			
FN1	72	HEX NUT	1/2					
CB-03-A	72	CLAMP BAR					7 1/8	@ Barrier Rail
FB1	144	BOLT, HEX HD.	1/2				1	
FW1	144	WASHER	3/32	1 1/16	17/32			
AB1	90	ANCHOR ROD	3/4				10	Roll or Cut Threads
AN1	270	NUT, HEX	3/4					
AW1	90	WASHER	1/8	2	13/16			
AP1	18	ANCHOR PLATE	1/8	8 5/8			10 1/8	See Notes - LB9
EP1	18	PAD, ELASTOMERIC	1/8	10 3/4			10 3/4	
SS-03	6	SPLICE SLEEVE EXTRUSION					3	0
FB2	96	BOLT, HEX WASHER FACED, PRTL. THRD	1/2				1	Partial Thd., Washer-faced bolt or tack weld washer to bolt.
B1	4	RAIL - 4" x 4 3/4"		4	4 3/4	37	10	See LB8 for Slot Pattern
B2	2	RAIL - 4" x 4 3/4"		4	4 3/4	29	2 1/8	See LB8 for Slot Pattern
B3	2	RAIL - 4" x 4 3/4"		4	4 3/4	29	2 1/8	See LB8 for Slot Pattern

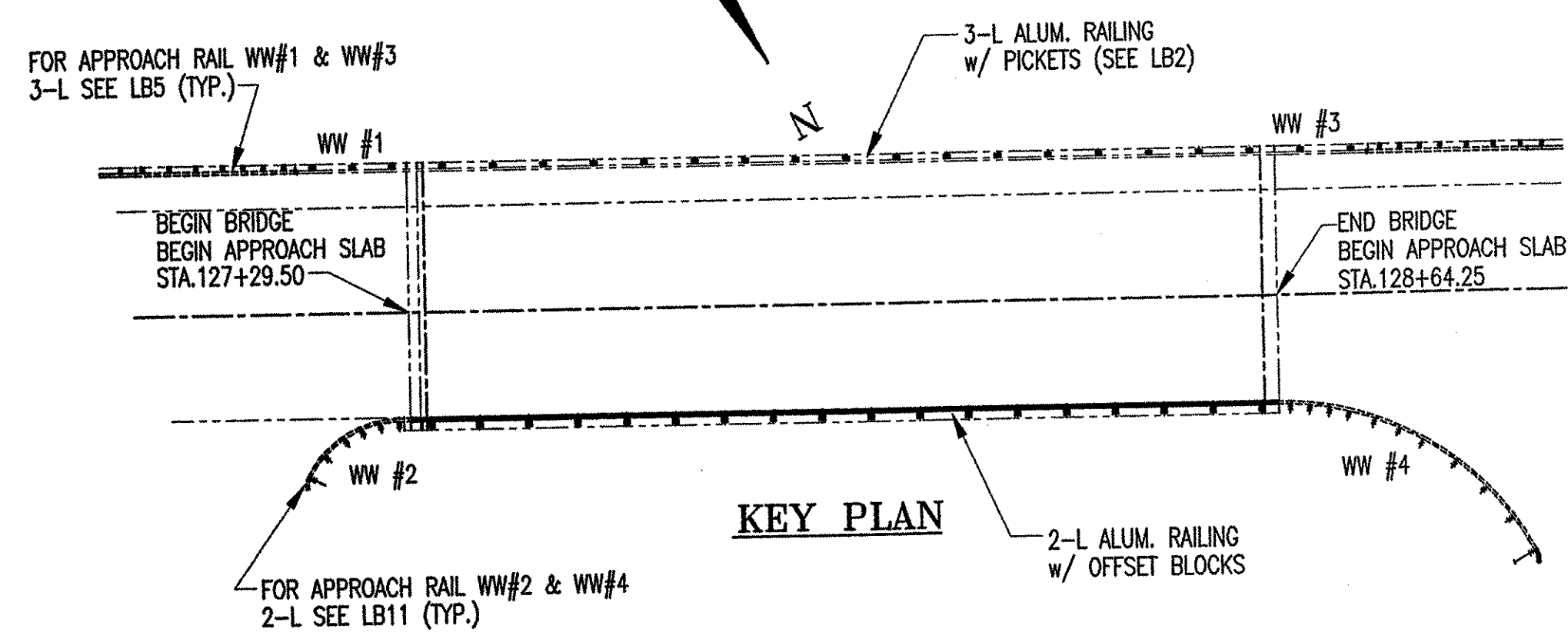


**OUTSIDE ELEVATION ~ NORTH RAIL**



- NOTE:**
- THIS CONTRACT IS BASED UPON THE CONTRACTOR SETTING AND SPACING THE ANCHOR BOLTS TO THE MEASUREMENTS SHOWN ON THE APPROVED SHOP DRAWINGS. THE L.B. FOSTER CO. WILL NOT BE RESPONSIBLE FOR WORK NECESSITATED BY ANY OTHER SETTING AND SPACING.
  - THIS DRAWING IS NOT TO SCALE.
  - FOR GENERAL NOTES AND TYPICAL DETAILS SEE DRAWING LB1.
  - LENGTH OF RAILING ON THIS SHEET IS 134.21 LF PAY LENGTH.
  - POST SPACING IS MEASURED HORIZONTALLY.
  - SPLICE GAP AT SLEEVE = 3/4" TYP. U.N.
  - \* RAIL LENGTHS DO NOT INCLUDE GAPS.
  - COMPENSATION FOR VERTICAL CURVE IS NOT NECESSARY.

H = HOLE SIDE  
SS = SHORT SLOTTED SIDE  
LS = LONG SLOTTED SIDE



**VTtrans**  
RECEIVED  
OK'D BY *Green* OK'D BY \_\_\_\_\_  
JAN 12 2005  
RESUBMIT \_\_\_\_\_ APPROVED \_\_\_\_\_  
DATE \_\_\_\_\_

BRIDGE No. 21  
PROJ. No: BRS 0147(5)S ITEM No: 525.21

APPROVED: \_\_\_\_\_ REC'D APPROVAL \_\_\_\_\_  
DRAWING \_\_\_\_\_

**L.B. FOSTER COMPANY**  
1018 GREENTREE ROAD  
PITTSBURGH, PENNSYLVANIA 15220

FOR: BECK & BELLUCCI, INCORPORATED  
STATE OF VERMONT AGENCY OF TRANSPORTATION  
TOWN OF ROYALTON, COUNTY OF WINDSOR  
2-L SEMI-ELLIP ALUM BRIDGE RAILING FOR VT RTE 14 OVER  
WHITE RIVER -- FLEV., KEY PLAN & BILL OF MATERIAL

MADE CMS DATE 10/04/04 JOB No. ARO170 CUST. No. \_\_\_\_\_  
CHECK AW DATE 10/21/04 DRAWING LB9 REV. No. ONE

REV.	DESCRIPTION	BY	DATE
1	REVISED PER APPROVER COMMENTS	CMS	12/28/04