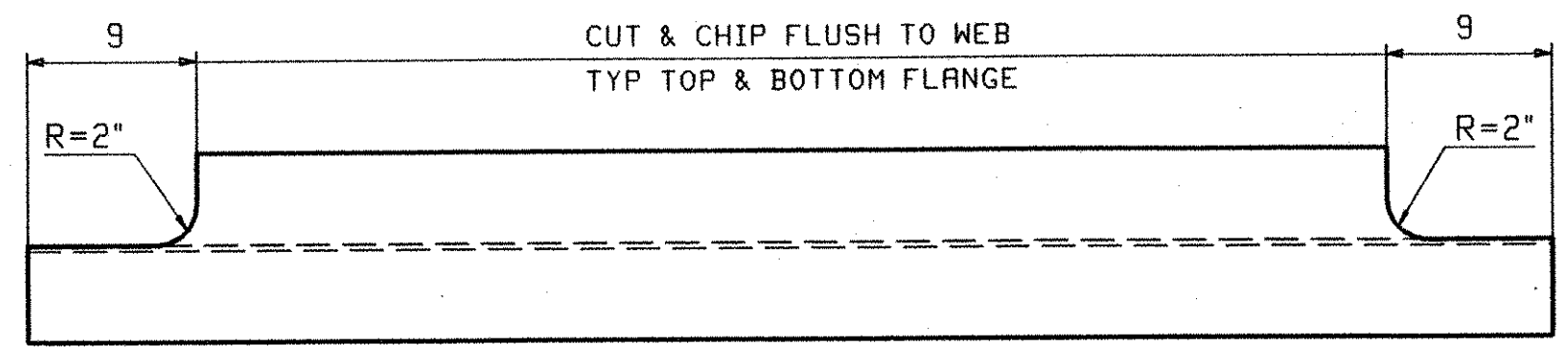
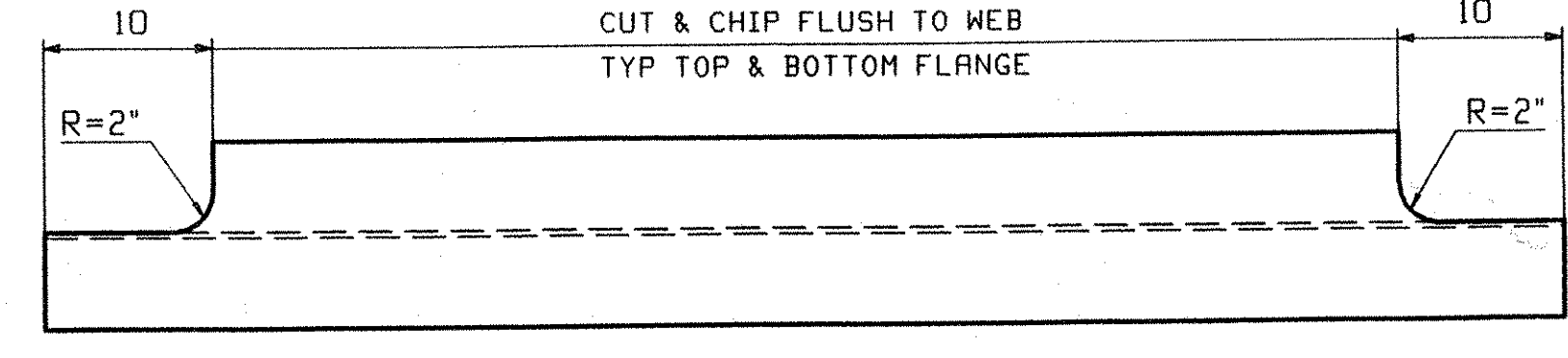


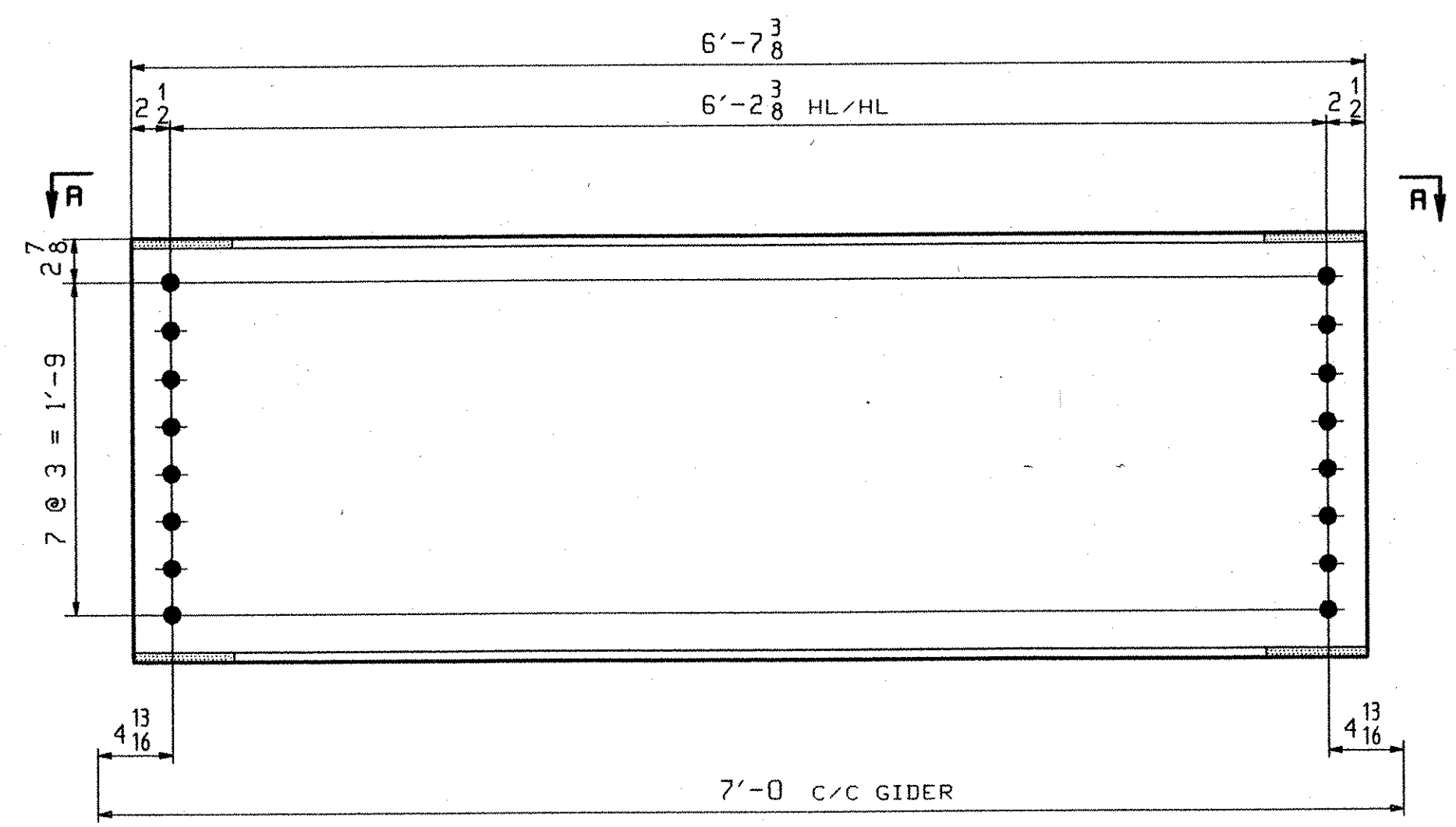
JOB NO.		DRAWING NO.		REV.					
		4							
PAGE	LINE	MARK	QTY	MARK	MATERIAL	LENGTH FT INCHES	REMARKS	WT	PROCUREMENT NOTES
					INT DIAPHRAGMS				
2	K	4D1	25		W 27x84	6 7 3/8		556	
					END DIAPHRAGMS				
2	J	4D2	1		W 27x84	6 8 7/16		563	
2	J	4D3	1		W 27x84	6 8 1/4		562	
2	J	4D4	1		W 27x84	6 8		560	
2	J	4D5	1		W 27x84	6 7 7/8		559	
2	J	4D6	1		W 27x84	6 7 13/16		559	
2	J	4D7	1		W 27x84	6 8 7/16		563	
2	J	4D8	1		W 27x84	6 8 1/4		562	
2	J	4D9	1		W 27x84	6 8		560	
2	J	4D10	1		W 27x84	6 7 7/8		559	
2	J	4D11	1		W 27x84	6 7 13/16		559	



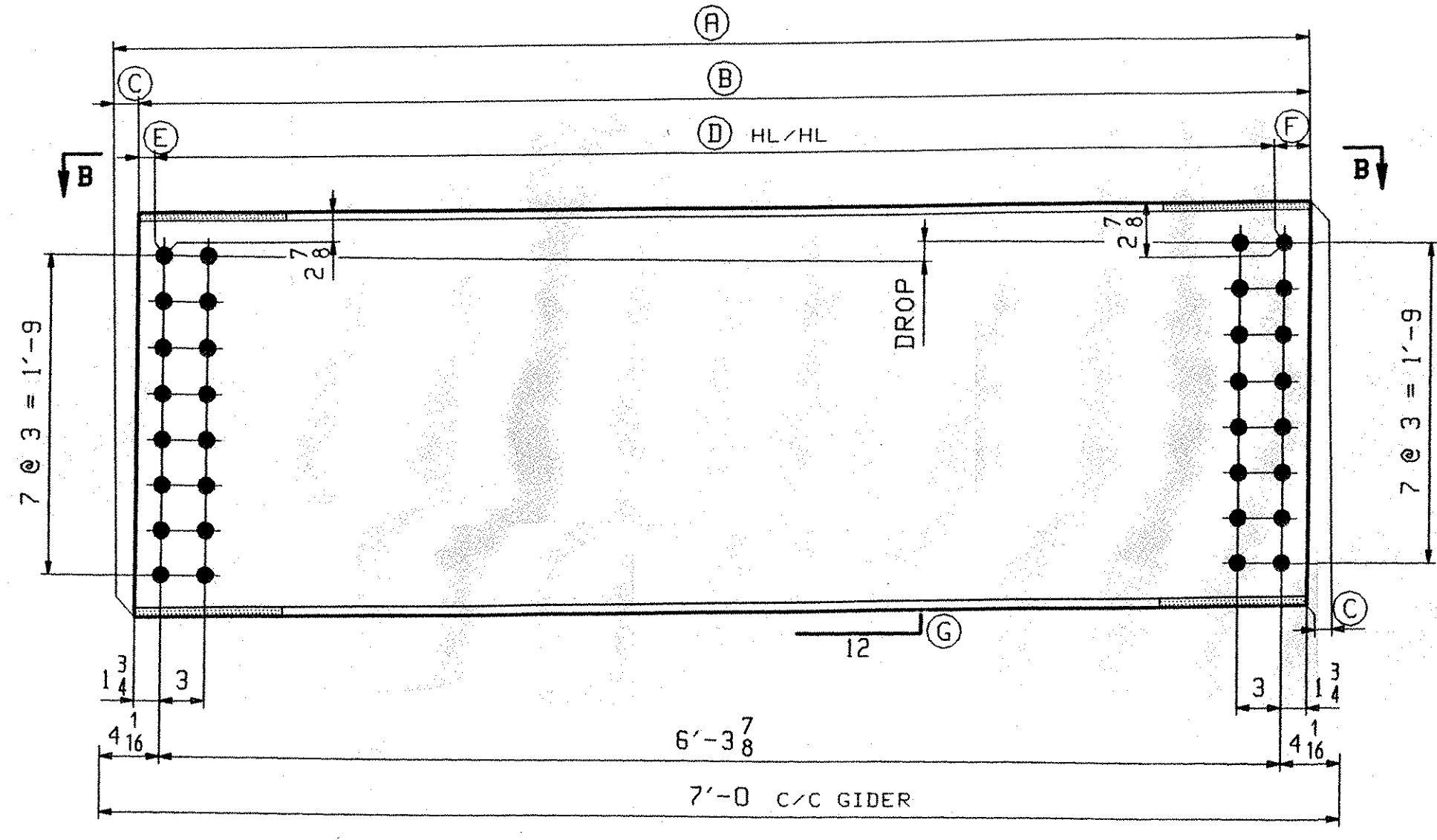
VIEW A-A



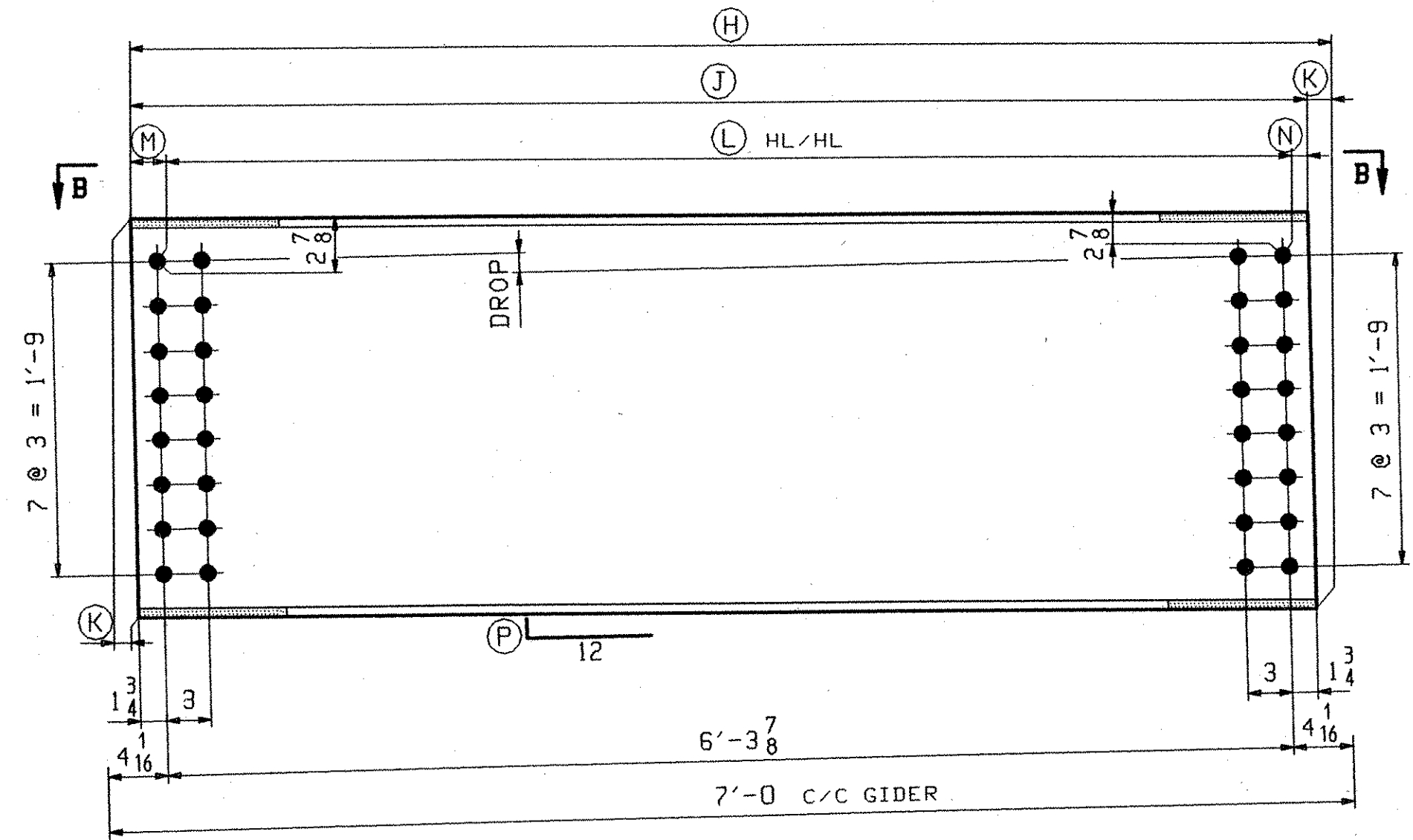
VIEW B-B



25 ~ DIAPHRAGM ~ 4D1



END DIAPHRAGM ~ MARK "A"



END DIAPHRAGM ~ MARK "B"

MARK "A"	QTY	DROP	(A)	(B)	(C)	(D)	(E)	(F)	(G)
A1, G5-G6 *4D2	1	2 3/4	6'-8 7/16	6'-7 7/16	1	6'-3 15/16	1 5/8	1 7/8	7 1/16
A2, G2-G3 *4D3	1	2 1/4	6'-8 1/4	6'-7 7/16	13/16	6'-3 15/16	1 11/16	1 13/16	3 3/8
A1, G4-G5 *4D4	1	1 3/4	6'-8	6'-7 3/8	5/8	6'-3 7/8	1 11/16	1 13/16	1 1/4
A2, G1-G2 *4D5	1	1 1/2	6'-7 7/8	6'-7 3/8	1/2	6'-3 7/8	1 11/16	1 13/16	1 1/4
A2, G3-G4 *4D6	1	1 1/4	6'-7 13/16	6'-7 3/8	7/16	6'-3 7/8	1 11/16	1 13/16	3 1/16

MARK "B"	QTY	DROP	(H)	(I)	(K)	(L)	(M)	(N)	(P)
A2, G5-G6 *4D7	1	2 3/4	6'-8 7/16	6'-7 7/16	1	6'-3 15/16	1 7/8	1 5/8	7 1/16
A1, G2-G3 *4D8	1	2 1/4	6'-8 1/4	6'-7 7/16	13/16	6'-3 15/16	1 13/16	1 11/16	3 3/8
A2, G4-G5 *4D9	1	1 3/4	6'-8	6'-7 3/8	5/8	6'-3 7/8	1 13/16	1 11/16	1 1/4
A1, G1-G2 *4D10	1	1 1/2	6'-7 7/8	6'-7 3/8	1/2	6'-3 7/8	1 13/16	1 11/16	1 1/4
A1, G3-G4 *4D11	1	1 1/4	6'-7 13/16	6'-7 3/8	7/16	6'-3 7/8	1 13/16	1 11/16	3 1/16

OUT FOR APPROVAL	11-4-04								
ISSUED TO SHOP									
FIELD & OFFICE									

REV.	REMARKS	DATE	DWN	CHK	APP	Q.A.	NO.	DIA.	LGT	TYPE	WASHER
	MATERIAL: M270-50W										
	ELECTRODES:										
	HOLES: 15/16" φ										
	SHOP BOLTS: 7/8" φ A325-3										

SURFACE PREP. & PAINT:
 * END DIAPHRAGMS 4D2, 4D4, 4D8, 4D10 & 4D11 SHALL BE PAINTED AND GREASED PER SUPPLEMENTAL SPECIFICATION 513. SEE DRAWING GNI.

DESCRIPTION:	DIAPHRAGMS	DRAWN BY	DATE
JOB:	VT ROUTE 14 BRIDGE OVER WHITE RIVER	JTB	10/12
	ROYALTON, VERMONT	CHKD BY	
	COUNTY OF WINDSOR	TJB	10/28
	CONTRACTOR: BECK & BELLUCCI, INC.	APPROV BY	
		SUPERVISOR	W. J. GRIFF
PROJ NO.	BRS-0147(5)S	Q.A.	
CUSTOMER:	VERMONT DOT		

RECEIVED
 NOV 12 2004
 BY DATE 12/12/04

CASCO BAY STEEL STRUCTURES, INC.	JOB NO.	DRG. NO.
75 SPRING HILL ROAD SACO, MAINE 04072	250	4
PHONE (207) 282-7360 FAX. (207) 282-1179		REV. 4