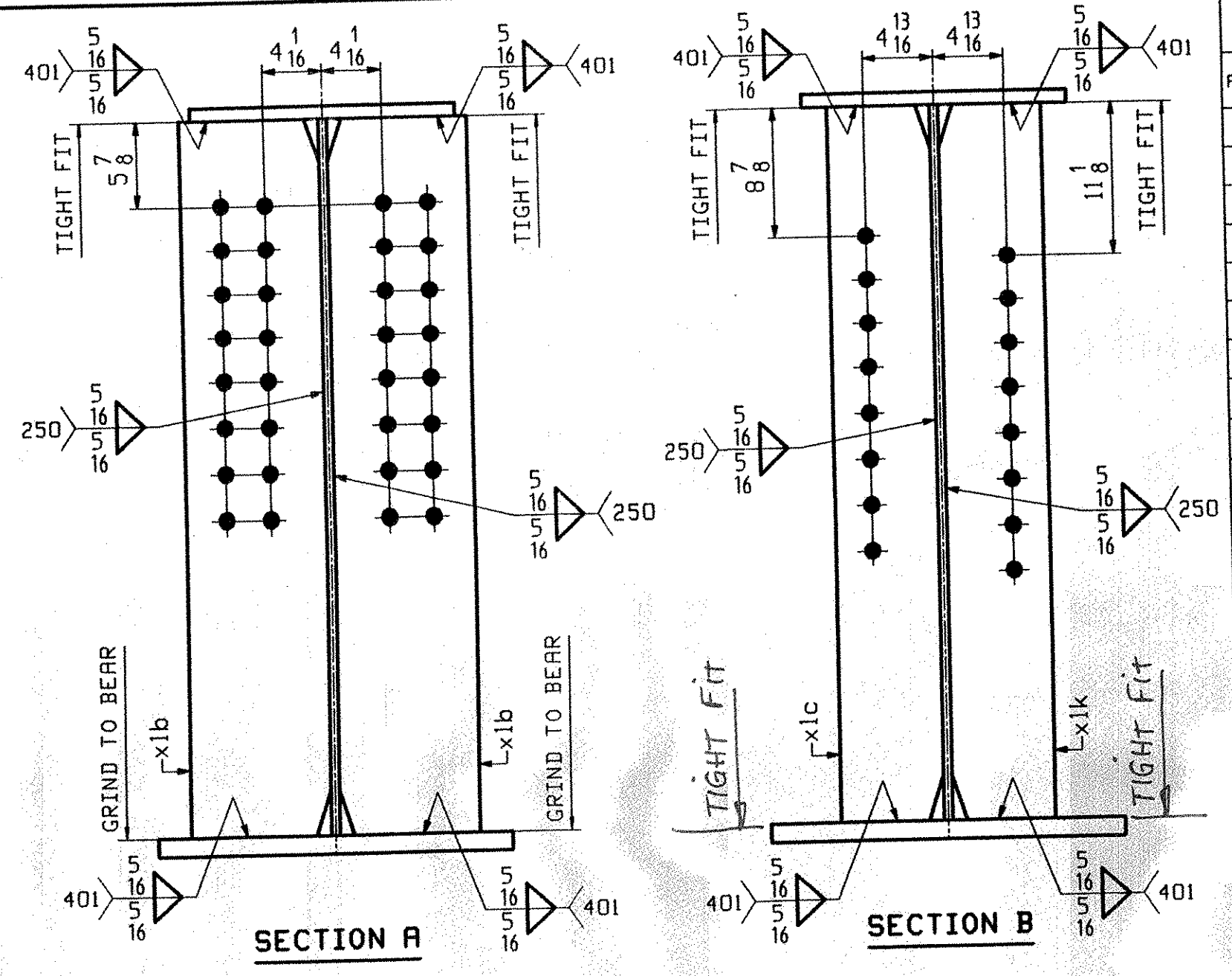
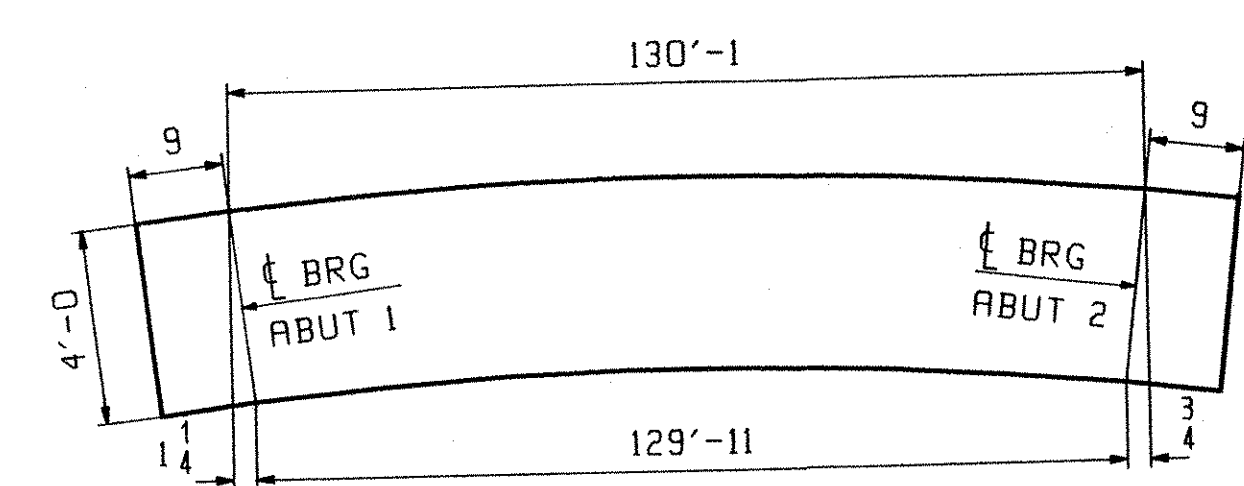


ONE - GIRDER - 2G3

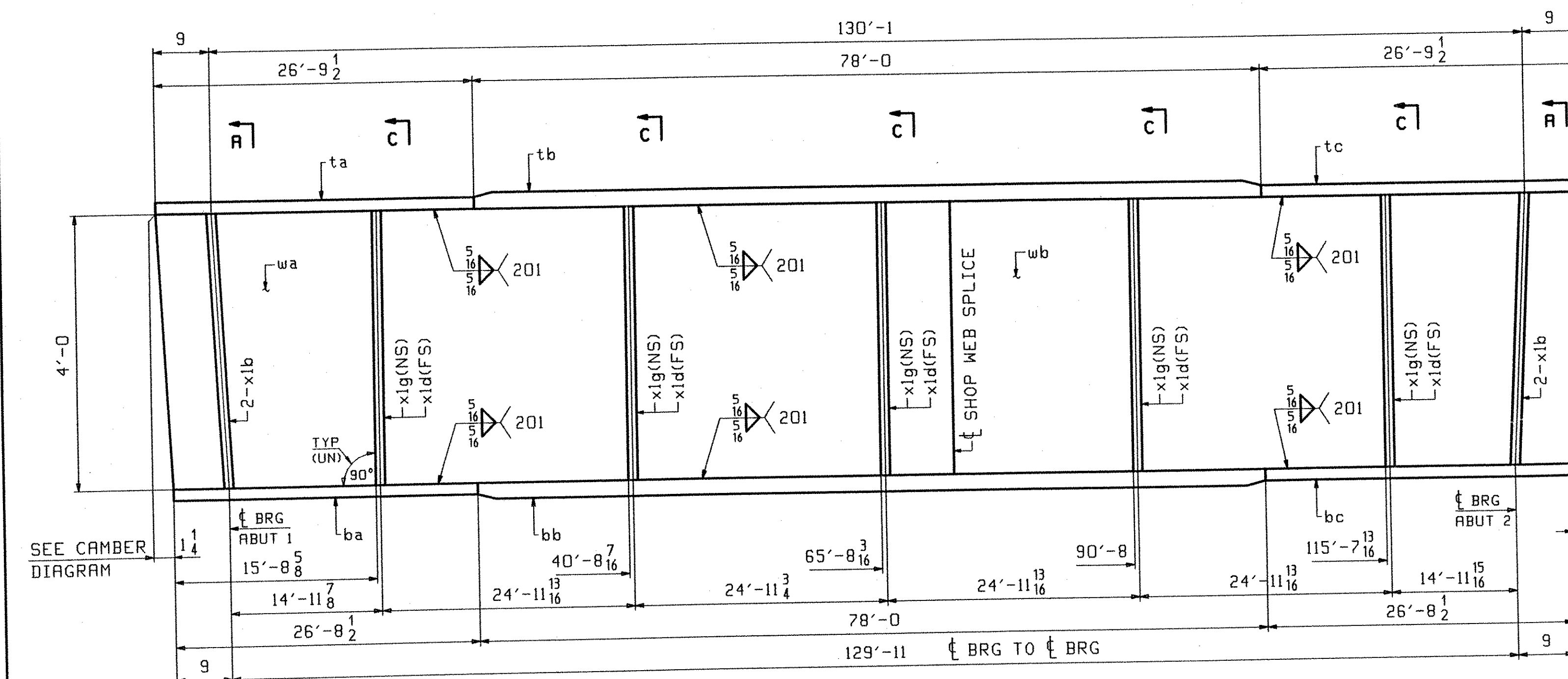
FOR GIRDER STANDARD DETAILS SEE DRAWING X1.
 FOR CAMBER & FLANGE DIAGRAMS SEE DRAWING C1.
 FOR GENERAL NOTES SEE DRAWING GNI.
 H2-3 DENOTES MATERIAL SUBJECT TO CHARPY V-NOTCH TESTING.



SEE CAMBER DIAGRAM

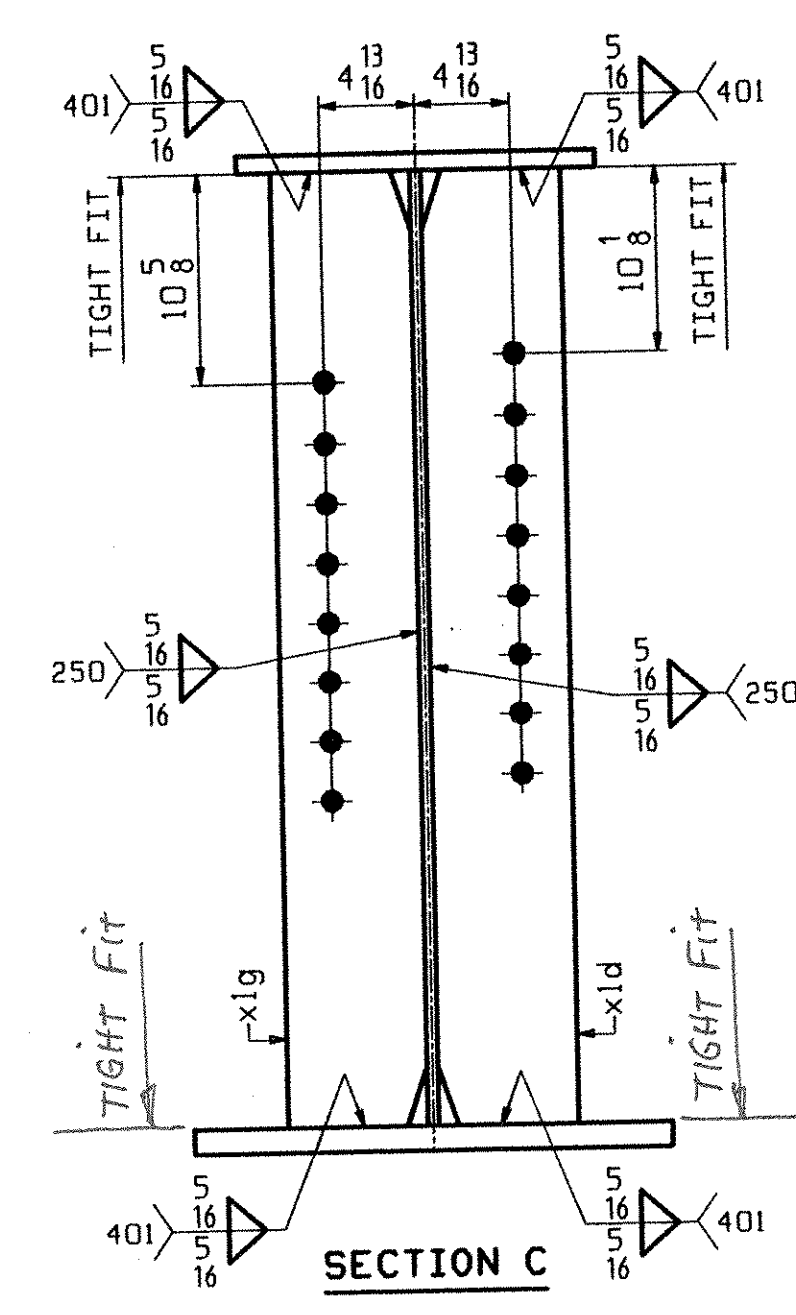


ORIENTATION DIAGRAM ~ 2G3 & 2G4
 SEE DRAWING C1



ONE - GIRDER - 2G4

FOR GIRDER STANDARD DETAILS SEE DRAWING X1.
 FOR CAMBER & FLANGE DIAGRAMS SEE DRAWING C1.
 FOR GENERAL NOTES SEE DRAWING GNI.
 H2-3 DENOTES MATERIAL SUBJECT TO CHARPY V-NOTCH TESTING.



BILL OF MATERIAL							JOB NO.		DRAWING NO.		REV.
ABM INFO		SHIP	QTY	MARK	MATERIAL	LENGTH	REMARKS	WT	PROCUREMENT NOTES		
PAGE	LINE					FT					
		2G3	1		GIRDER						41315
1	E		1	wa	PL 9/16x48	68 6 9/16	(M270-50WT2) (H2-3)				
1	G		1	wb	PL 9/16x48	63 0 1/16	(M270-50WT2) (H2-3)				
1	L		1	ta	PL 7/8x18	26 9 1/2					
1	J		1	tb	PL 1/2x18	78 0					
1	L		1	tc	PL 7/8x18	26 9 1/2					
1	C		1	ba	PL 1 1/4x24	26 8 1/2	(M270-50WT2) (H2-3)				
1	A		1	bb	PL 2x24	78 0	(M270-50WT2) (H2-3)				
1	C		1	bc	PL 1 1/4x24	26 8 1/2	(M270-50WT2) (H2-3)				
2	B		4	x1b	PL 1x9 1/2	4 0	MIE				
2	C		5	x1c	PL 1/2x7	4 0					
2	C		5	x1k	PL 2x7	4 0					
		2G4	1		GIRDER						41315
1	E		1	wa	PL 9/16x48	68 6 9/16	(M270-50WT2) (H2-3)				
1	G		1	wb	PL 9/16x48	63 0 1/16	(M270-50WT2) (H2-3)				
1	L		1	ta	PL 7/8x18	26 9 1/2					
1	J		1	tb	PL 1/2x18	78 0					
1	L		1	tc	PL 7/8x18	26 9 1/2					
1	C		1	ba	PL 1 1/4x24	26 8 1/2	(M270-50WT2) (H2-3)				
1	A		1	bb	PL 2x24	78 0	(M270-50WT2) (H2-3)				
1	C		1	bc	PL 1 1/4x24	26 8 1/2	(M270-50WT2) (H2-3)				
2	B		4	x1b	PL 1x9 1/2	4 0	MIE				
2	C		5	x1d	PL 1/2x7	4 0					
2	C		5	x1g	PL 1/2x7	4 0					

RECEIVED
 NOV 12 2004
 BY: [Signature] DATE: 12/17/2004

OUT FOR APPROVAL	11-4-04										
OUT FOR APPROVAL											
ISSUED TO SHOP											
FIELD & OFFICE											

REV.	REMARKS	DATE	DWN	CHK	APP	Q.A.	NO.	DIA.	LGT	TYPE	WASHER
	MATERIAL:										
	M270-50W										
	ELECTRODES:										
	HOLES:										
	SHOP BOLTS:										

SURFACE PREP. & PAINT:
 SEE DRAWING GNI

DESCRIPTION:	GIRDERS - 2G3 & 2G4	DRAWN BY	DATE
JOB:	VT ROUTE 14 BRIDGE OVER WHITE RIVER	JTB	10/12
	ROYALTON, VERMONT	CHKD BY	
	COUNTY OF WINDSOR	JTB	10/20
	CONTRACTOR: BECK & BELLUCCI, INC.	APPROV BY	
		SUPERVISOR	H. J. GRIFFIN
PROJ NO.	BRS-0147(5)S	Q.A.	
CUSTOMER:	VERMONT DOT		
CASCO BAY STEEL STRUCTURES, INC.		JOB NO.	DRG. NO.
75 SPRING HILL ROAD	SACO, MAINE 04072	250	2
PHONE (207) 282-7360	FAX. (207) 282-1179		REV.