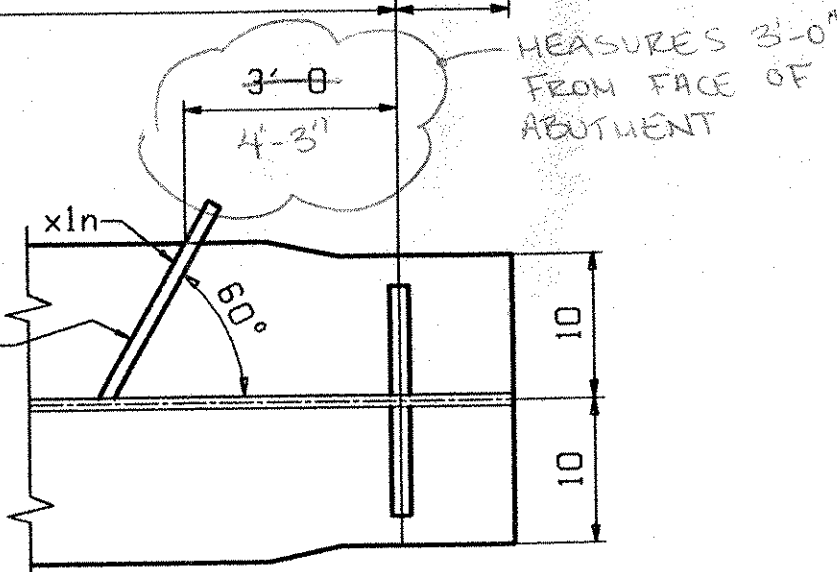


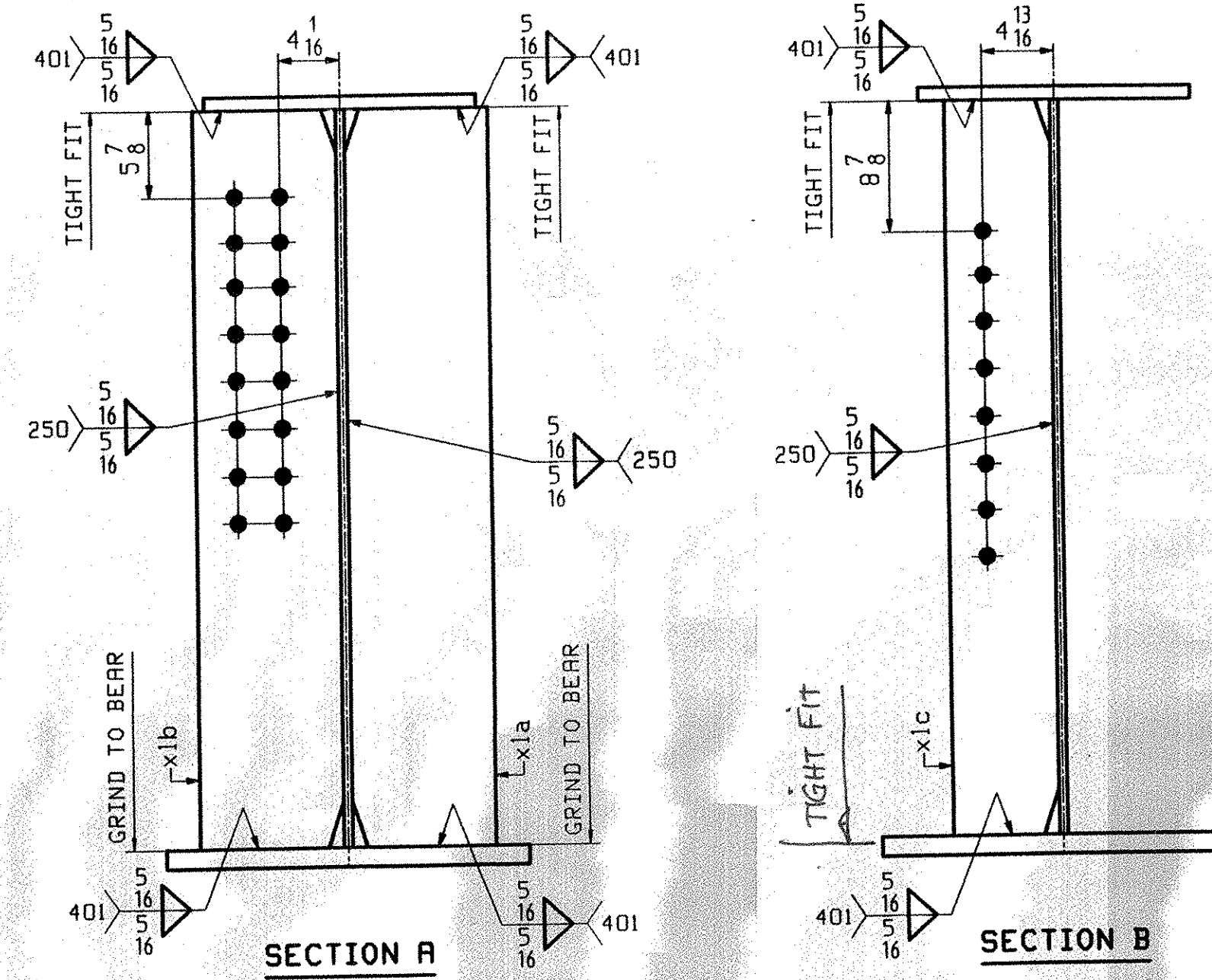
ONE - GIRDER - IG1

FOR GIRDER STANDARD DETAILS SEE DRAWING XI.
 FOR CAMBER & FLANGE DIAGRAMS SEE DRAWING C1.
 FOR GENERAL NOTES SEE DRAWING GNI.
 H2-3 DENOTES MATERIAL SUBJECT TO CHARPY V-NOTCH TESTING.

SEAL WELD ALL AROUND
 TIGHT FIT TO FLANGE
 (TYP 401)

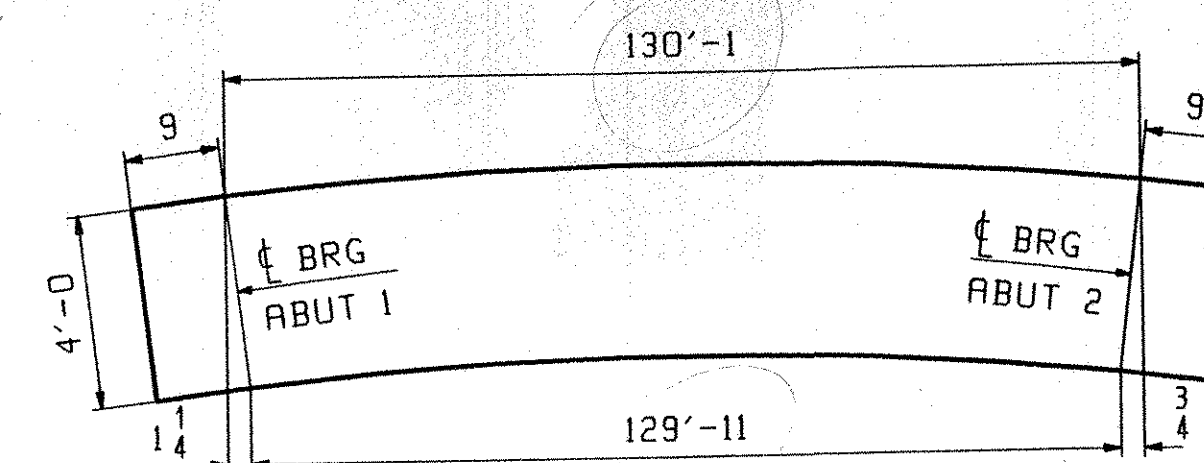


SECTION BA



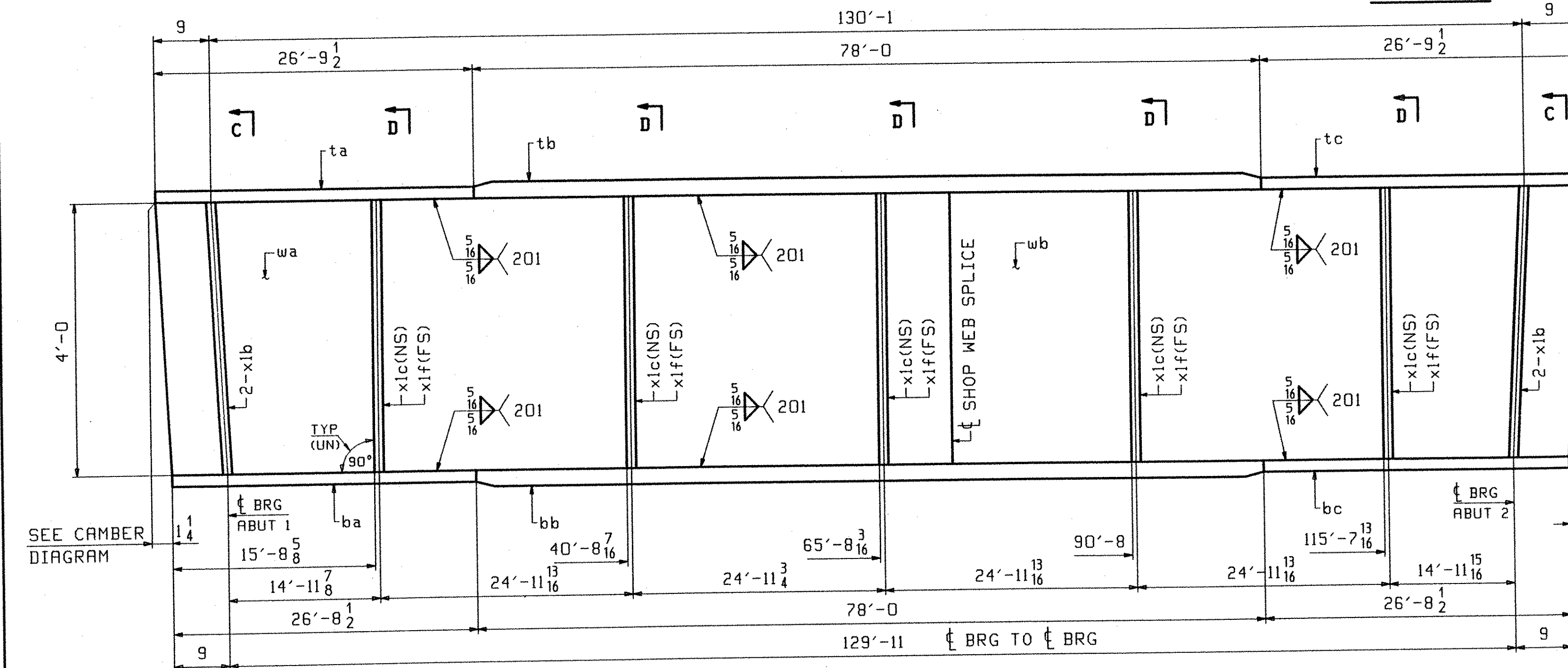
SECTION A

SECTION B



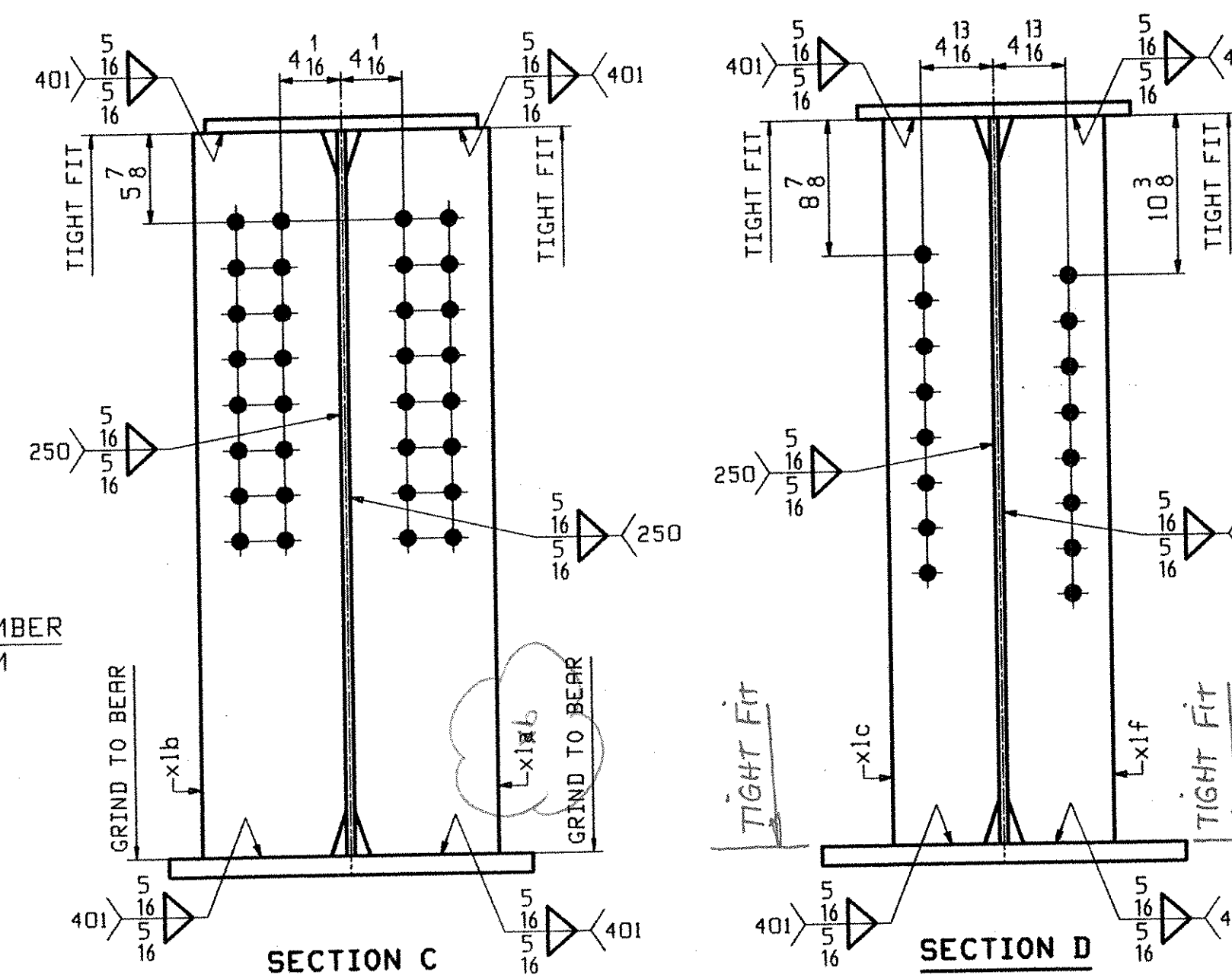
ORIENTATION DIAGRAM ~ IG1 & IG2

SEE DRAWING C1



ONE - GIRDER - IG2

FOR GIRDER STANDARD DETAILS SEE DRAWING XI.
 FOR CAMBER & FLANGE DIAGRAMS SEE DRAWING C1.
 FOR GENERAL NOTES SEE DRAWING GNI.
 H2-3 DENOTES MATERIAL SUBJECT TO CHARPY V-NOTCH TESTING.



SECTION C

SECTION D

ABM INFO		SHIP		BILL OF MATERIAL				JOB NO.		DRAWING NO.		REV.
PAGE	LINE	MARK	QTY	MARK	MATERIAL	LENGTH FT	INCHES	REMARKS	MT	PROCUREMENT NOTES		
		IG1	1		GIRDER					41080		
1	E		1	wa	PL 9/16x48	68	6 9/16	(M270-50HT2) (H2-3)				
1	G		1	wb	PL 9/16x48	63	0 1/8	(M270-50HT2) (H2-3)				
1	L		1	ta	PL 7/8x18	26	9 1/2					
1	J		1	tb	PL 1 1/2x18	78	0					
1	L		1	tc	PL 7/8x18	26	9 1/2					
1	C		1	ba	PL 1 1/4x24	26	8 1/2	(M270-50HT2) (H2-3)				
1	A		1	bb	PL 2x24	78	0	(M270-50HT2) (H2-3)				
1	C		1	bc	PL 1 1/4x24	26	8 1/2	(M270-50HT2) (H2-3)				
2	B		2	xla	PL 1x9 1/2	4	0	MIE				
2	B		2	xlb	PL 1x9 1/2	4	0	MIE				
2	C		5	xlc	PL 1/2x7	4	0					
2	D		1	xln	PL 1/2x3 1/4	1	5/8					
		IG2	1		GIRDER					41315		
1	E		1	wa	PL 9/16x48	68	6 9/16	(M270-50HT2) (H2-3)				
1	G		1	wb	PL 9/16x48	63	0 1/8	(M270-50HT2) (H2-3)				
1	L		1	ta	PL 7/8x18	26	9 1/2					
1	J		1	tb	PL 1 1/2x18	78	0					
1	L		1	tc	PL 7/8x18	26	9 1/2					
1	C		1	ba	PL 1 1/4x24	26	8 1/2	(M270-50HT2) (H2-3)				
1	A		1	bb	PL 2x24	78	0	(M270-50HT2) (H2-3)				
1	C		1	bc	PL 1 1/4x24	26	8 1/2	(M270-50HT2) (H2-3)				
2	B		4	xlb	PL 1x9 1/2	4	0	MIE				
2	C		5	xlc	PL 1/2x7	4	0					
2	C		5	xlf	PL 1/2x7	4	0					

RECEIVED

NOV 12 2004

APPROVED

DATE 12/13/2004

OUT FOR APPROVAL	1/14/04
OUT FOR APPROVAL	
ISSUED TO SHOP	
FIELD & OFFICE	

REV.	REMARKS	DATE	DMN	CHK	APP	Q.A.	NO.	DIA.	LGT	TYPE	WASHER
	MATERIAL: M270-50W										SHOP BOLTS:
	ELECTRODES:										
	HOLES: 15/16" φ										

SURFACE PREP. & PAINT:
 SEE DRAWING GNI

DESCRIPTION:	GIRDERS - IG1 & IG2	DRAWN BY:	JTB	DATE:	10/12
JOB:	VT ROUTE 14 BRIDGE OVER WHITE RIVER	CHKD BY:	TJB		10/28
	ROYALTON, VERMONT	APPROV BY:			
	COUNTY OF WINDSOR	SUPERVISOR:	W. J. GAT		
	CONTRACTOR: BECK & BELLUCCI, INC.	Q.A.			
PROJ NO.	BRS-0147(5)S				
CUSTOMER:	VERMONT DOT				
CASCO BAY STEEL STRUCTURES, INC.		JOB NO.	250	DRG. NO.	1
75 SPRING HILL ROAD	SACO, MAINE 04072			REV.	
PHONE (207) 282-7360	FAX. (207) 282-1179				