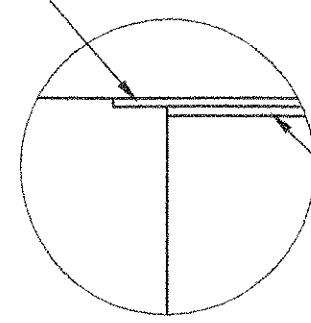


PLAN VIEW
EXPANSION BEARING
LOCATION: ABUTMENT 1
QUANTITY: 6

1 7/8" x 5" SLOTTED HOLES FOR
1 1/2" ANCHOR BOLTS

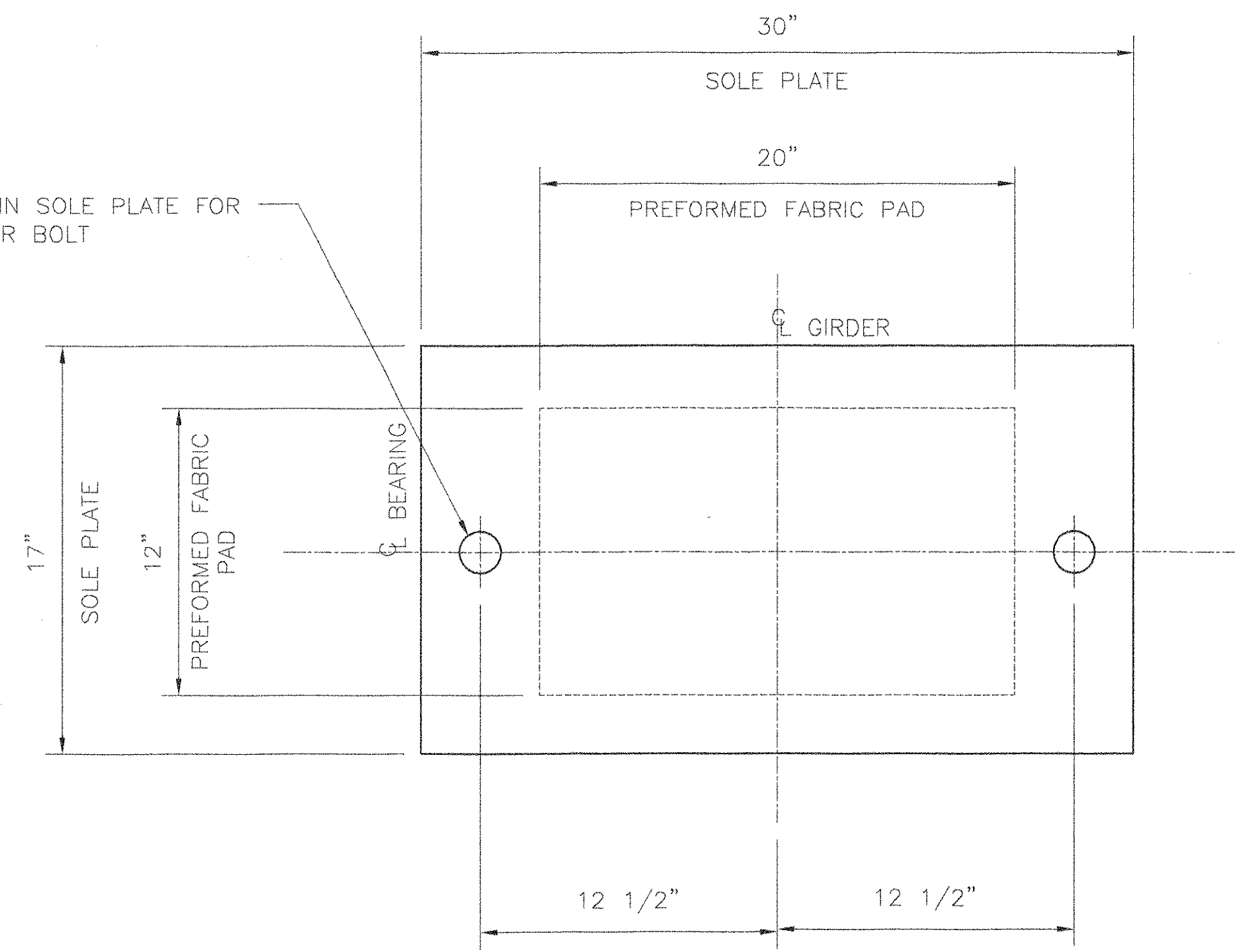
14 GA. STAINLESS STEEL
SEAL WELDED TO SOLE PLATE
(USING WELD PROCEDURE
GTAW F1-REV.7)



DETAIL A
N.T.S.

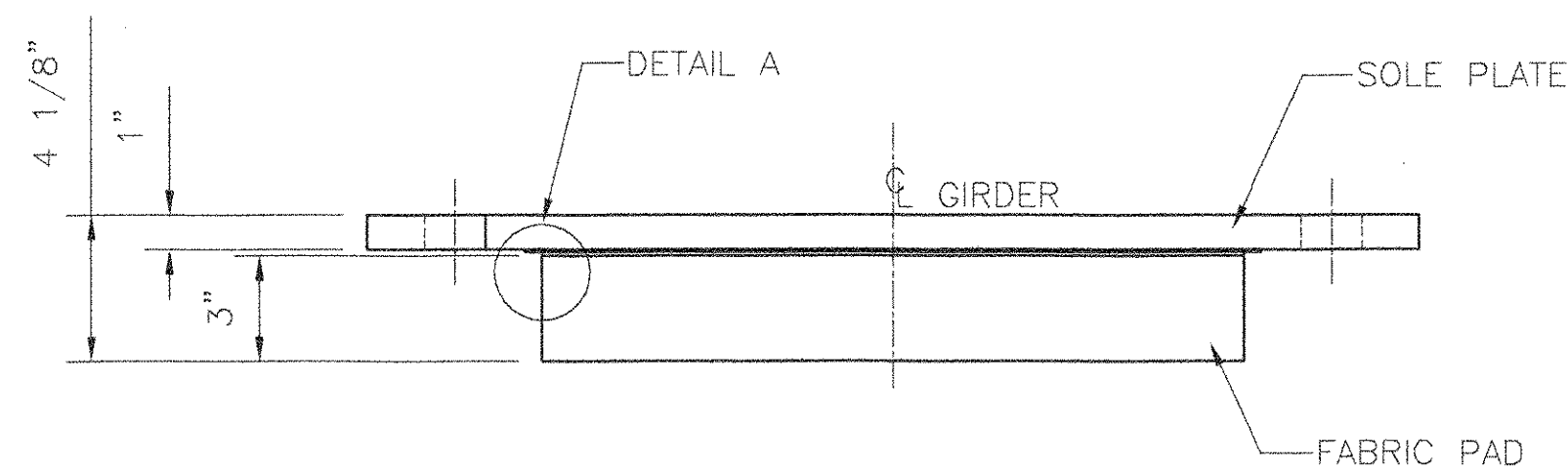
3/32" PTFE BONDED TO
FABRIC PAD (USING BOND
PROCEDURE EMS-QC-110)

1 7/8" HOLE IN SOLE PLATE FOR
1 1/2" ANCHOR BOLT

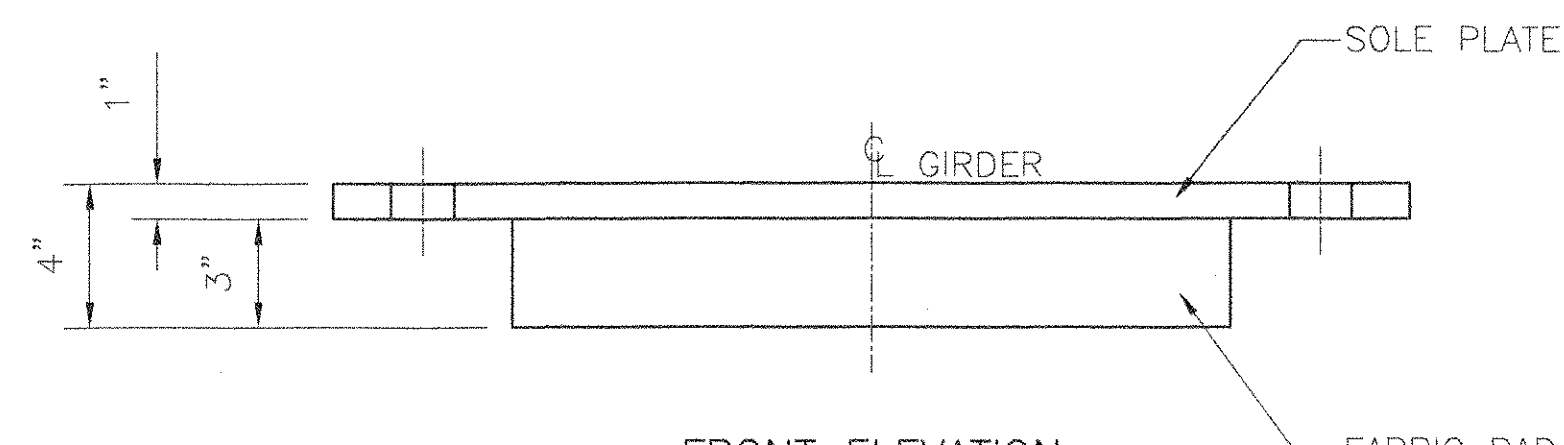


PLAN VIEW
FIXED BEARING
LOCATION: ABUTMENT 2
QUANTITY: 6

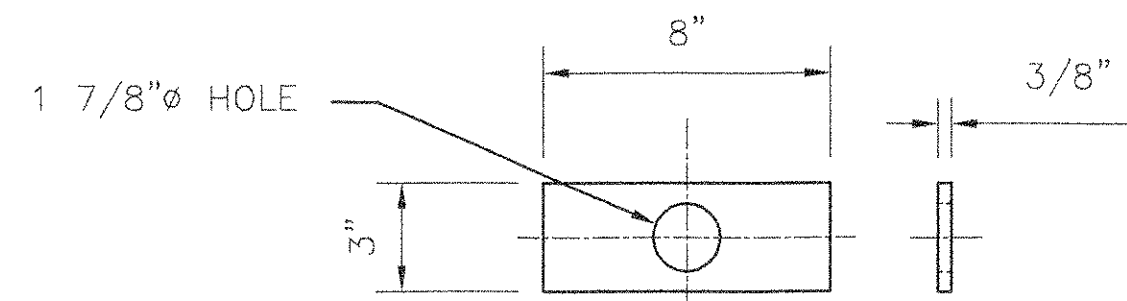
SHOP DRAWING REVIEW	
REVIEW IS ONLY FOR GENERAL CONFORMANCE WITH DESIGN CONCEPT	
<input checked="" type="checkbox"/>	PROVIDE AS SUBMITTED
<input type="checkbox"/>	PROVIDE AS CORRECTED
<input type="checkbox"/>	REVISE AND RESUBMIT
<input type="checkbox"/>	REJECTED - SEE REMARKS
<input type="checkbox"/>	SUBMITTAL NOT REQUIRED - RETURNED WITHOUT REVIEW
THIS REVIEW IS ONLY FOR GENERAL CONFORMANCE WITH THE DESIGN CONCEPT OF THE PROJECT AND GENERAL COMPLIANCE WITH THE INFORMATION GIVEN IN THE CONTRACT DOCUMENTS. ANY ACTION, CORRECTIONS OR COMMENTS SHOWN AND/OR NOTED ARE SUBJECT TO THE REQUIREMENTS OF THE CONTRACT DOCUMENTS. CONTRACTOR IS RESPONSIBLE FOR DETERMINING THE ACCURACY AND COMPLETENESS OF DETAILS, SUCH AS DIMENSIONS AND QUANTITIES; SUBSTANTIATING INSTRUCTIONS FOR INSTALLATION OR PERFORMANCE OF EQUIPMENT OR SYSTEMS; THE MEANS, METHODS, TECHNIQUES, SEQUENCES AND PROCEDURES OF CONSTRUCTION, INCLUDING SAFETY PRECAUTIONS AND PROCEDURES; AND THE SELECTION OF FABRICATION PROCESSES. ENGINEER'S APPROVAL OF A SPECIFIC ITEM SHALL NOT INDICATE APPROVAL OF AN ASSEMBLY OF WHICH THE ITEM IS A COMPONENT. FURTHER, ENGINEER'S REVIEW OF CONTRACTOR'S SUBMITTALS SHALL NOT RELIEVE THE CONTRACTOR OF ITS OBLIGATIONS UNDER THE CONTRACT DOCUMENTS WITH RESPECT TO THE PREPARATION AND/OR APPROVAL OF SUCH SUBMITTALS.	
J.D. CONSULTING ENGINEERS, INC. 110 COMMERCIAL STREET MANCHESTER, NEW HAMPSHIRE	
BY: <i>JH</i>	DATE: 1-7-05



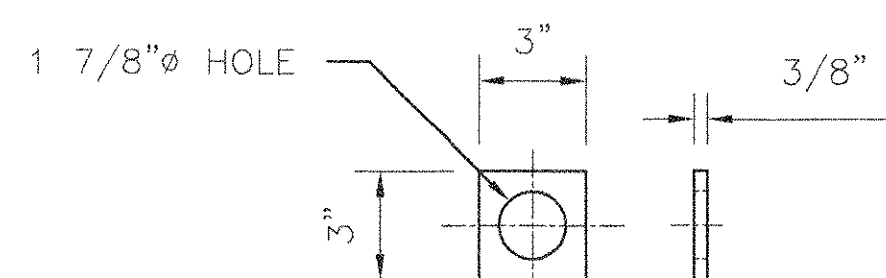
FRONT ELEVATION
EXPANSION BEARING
LOCATION: ABUTMENT 1



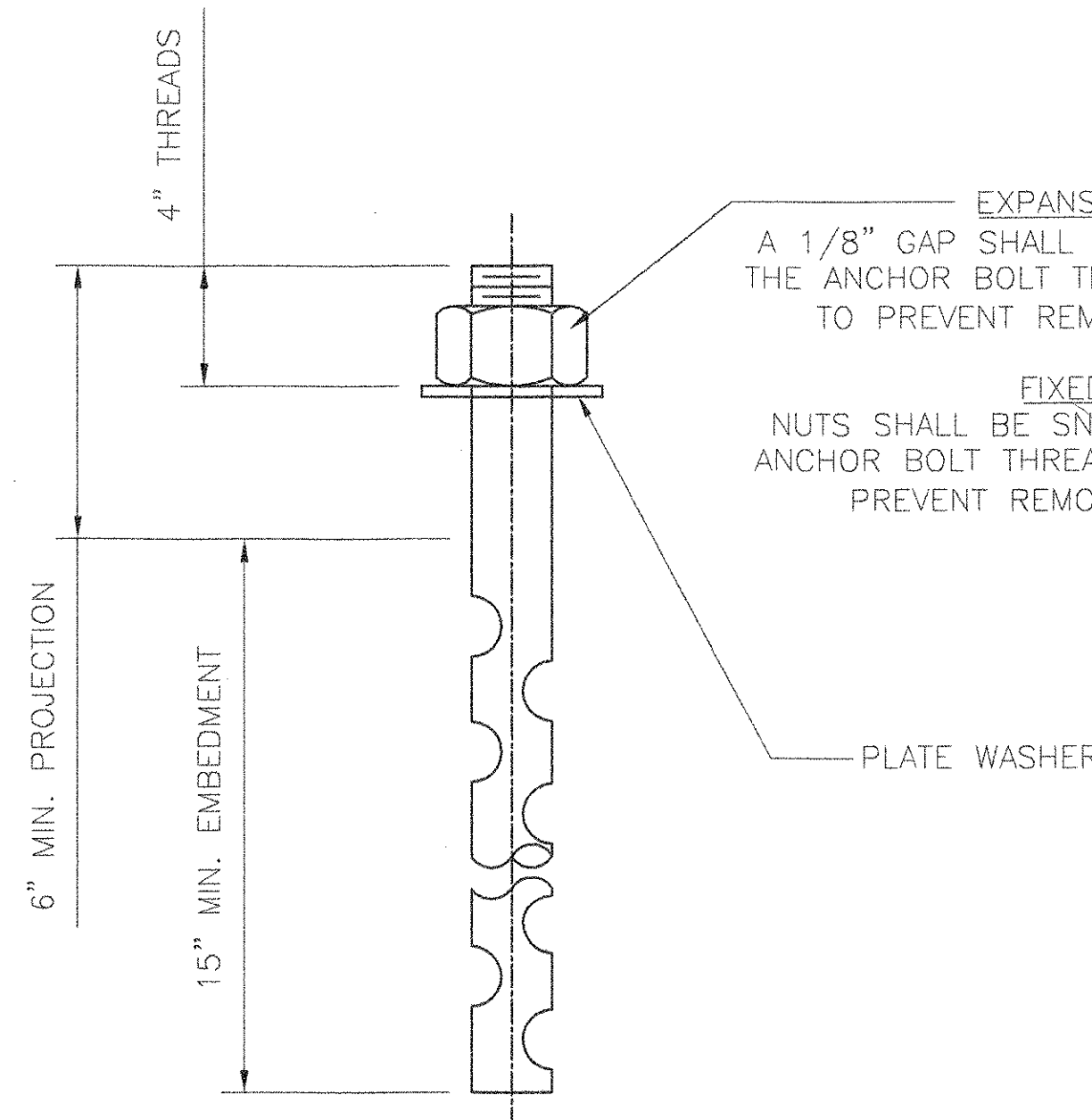
FRONT ELEVATION
FIXED BEARING
LOCATION: ABUTMENT 2



WASHER DETAIL
EXPANSION BEARING ONLY
GALVANIZED
QUANTITY: 12



WASHER DETAIL
FIXED BEARING ONLY
GALVANIZED
QUANTITY: 12



ANCHOR BOLT DETAIL
N.T.S.

1 1/2" x 22" LONG F1554 GRADE 55 SWEDGED ANCHOR BOLT WITH 4" OF THREADS ONE END W/ ONE HEAVY HEX NUT ALL GALVANIZED

EXPANSION BEARING
A 1/8" GAP SHALL BE LEFT BELOW THE NUT. THE ANCHOR BOLT THREADS SHALL BE BURRED TO PREVENT REMOVAL OF NUTS. (TYP.)

FIXED BEARING
NUTS SHALL BE SNUG TIGHT ONLY AND THE ANCHOR BOLT THREADS SHALL BE BURRED TO PREVENT REMOVAL OF NUTS (TYP.)

MATERIAL:
STEEL - AASHTO M270 (ASTM A709) GRADE 36 ZINC METALIZED
STAINLESS STEEL - ASTM A240 TYPE 304 MIRROR FINISH OF LESS THAN 10 MICRA INCHES RMS
PTFE - ASTM D1457
FABRIC PAD - AASHTO 18.4.9.1
ANCHOR BOLTS ASTM F1554 GRADE 55 GALVANIZED

NOTES:
1. LOCATION OF FABRICATION: 70 SOUTH ST. WALPOLE, MA 02081
2. COSMEC REPRESENTATIVE: MR. MATT McANDREWS (508)668-6600
3. ALL EDGES OF STEEL SHALL HAVE A 1/16" MINIMUM RADIUS

VTtrans
RECEIVED
CHKD BY: *JWC* OK'D BY: _____
JAN 11 2005
RESUBMIT _____ APPROVED: *AS NOTED*
BY: _____ DATE: *1/20/05*

STATE OF VERMONT
AGENCY OF TRANSPORTATION

BRIDGE NO. 21
PROJECT NO. BRS D147(5)S
V.T. ROUTE 14 OVER THE WHITE RIVER
TOWN OF ROYALTON

COSMEC, INC. 70 SOUTH STREET
WALPOLE, MA. 02081

SCALE: 3/16"=1"	DRAWN BY: MK	CHECKED BY: RC
DATE: 12/15/04	DATE: 12/28/04	DATE: 12/28/04
PREFORMED FABRIC PAD BEARINGS		
CUSTOMER: BECK & BELLUCCI	S.O. NUMBER: 60194	DRAWING NUMBER: 4348

REV.	BY	DATE	CHK'D	DATE

084