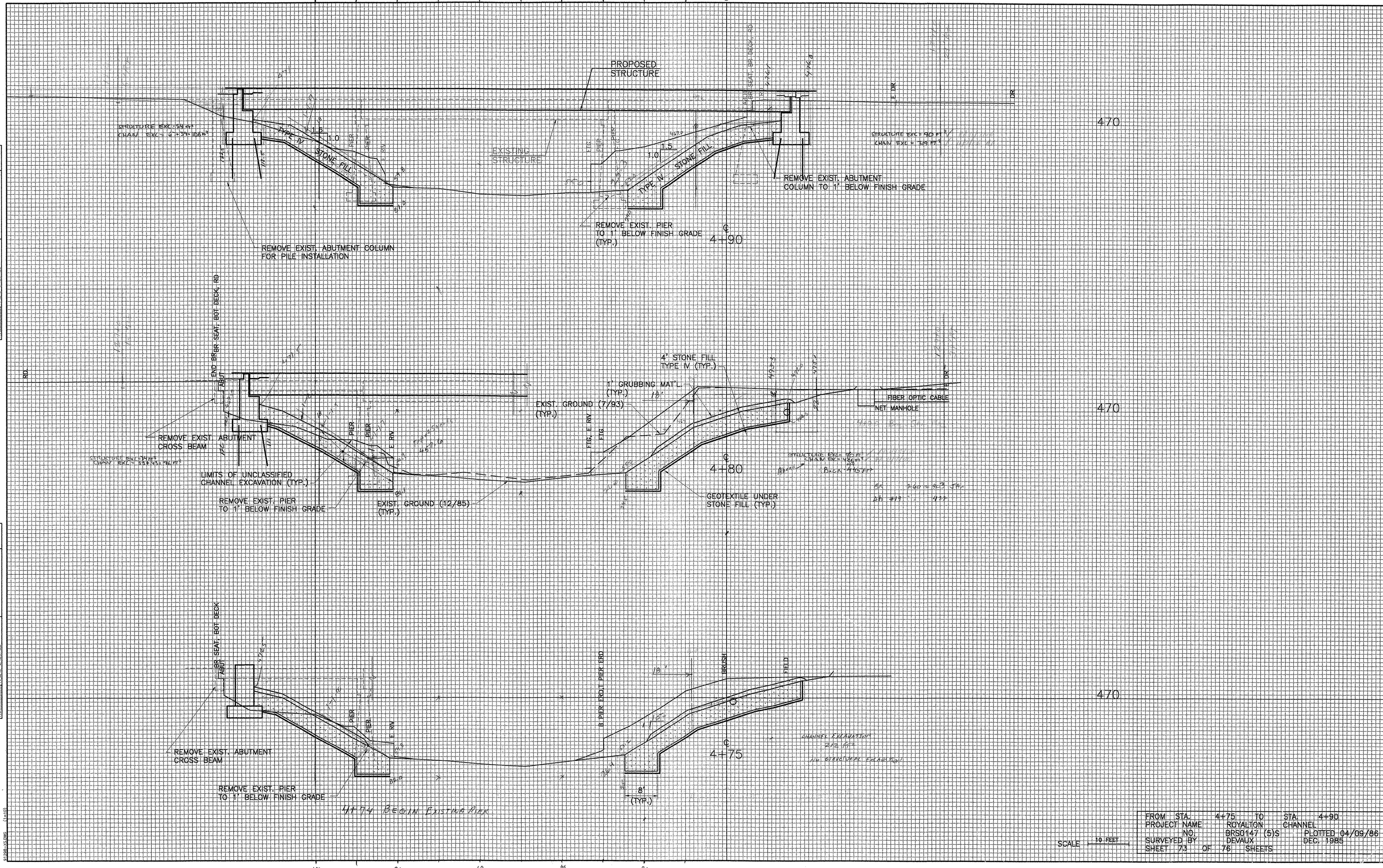


DATE	
BY	
FINAL SURVEY	
SURVEYED	
PLOTTED	
NOTED	
AREAS CHECKED	
NO.	

DATE	
BY	
FINAL SURVEY	
SURVEYED	
PLOTTED	
NOTED	
AREAS CHECKED	
NO.	



$$4.0 + \frac{8}{15} = 9.33$$

$$- 4.80$$

$$4.53$$

25 9  
26 1