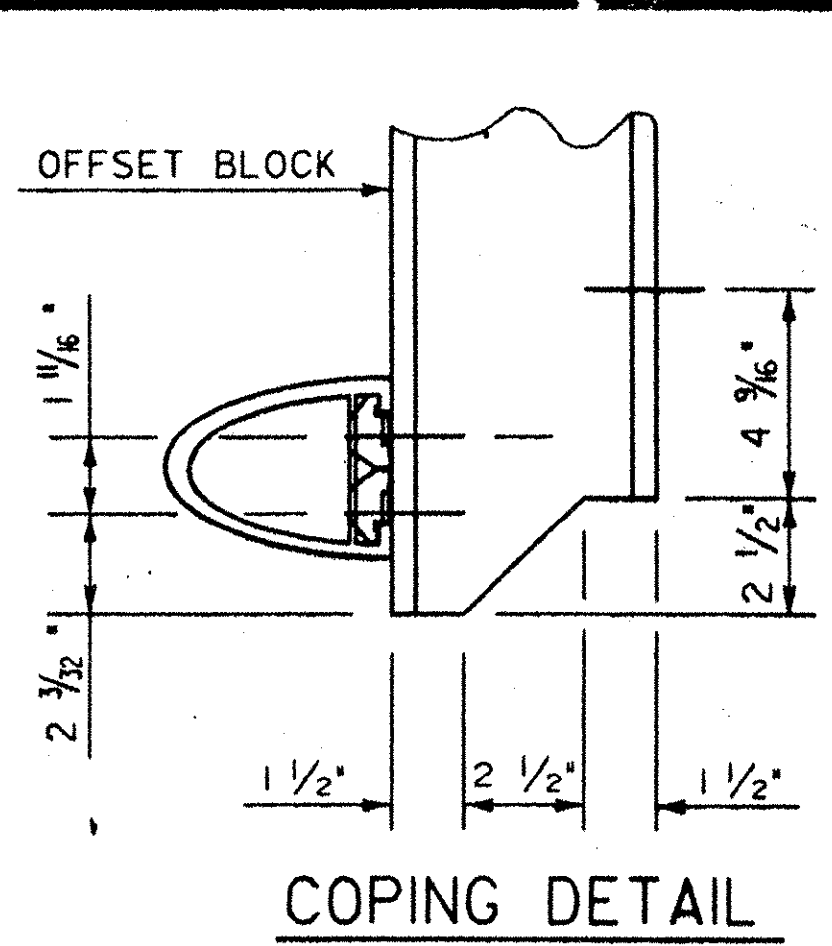
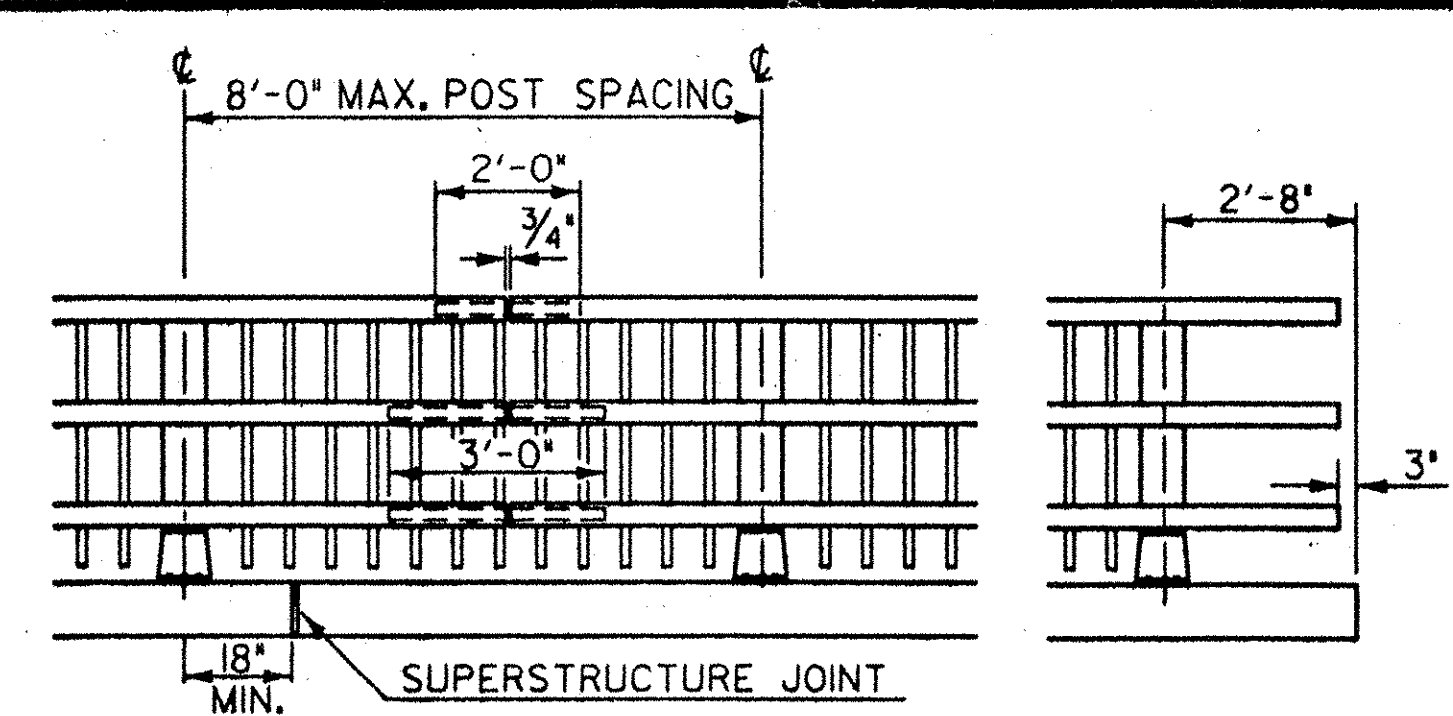


POST SIDE VIEW

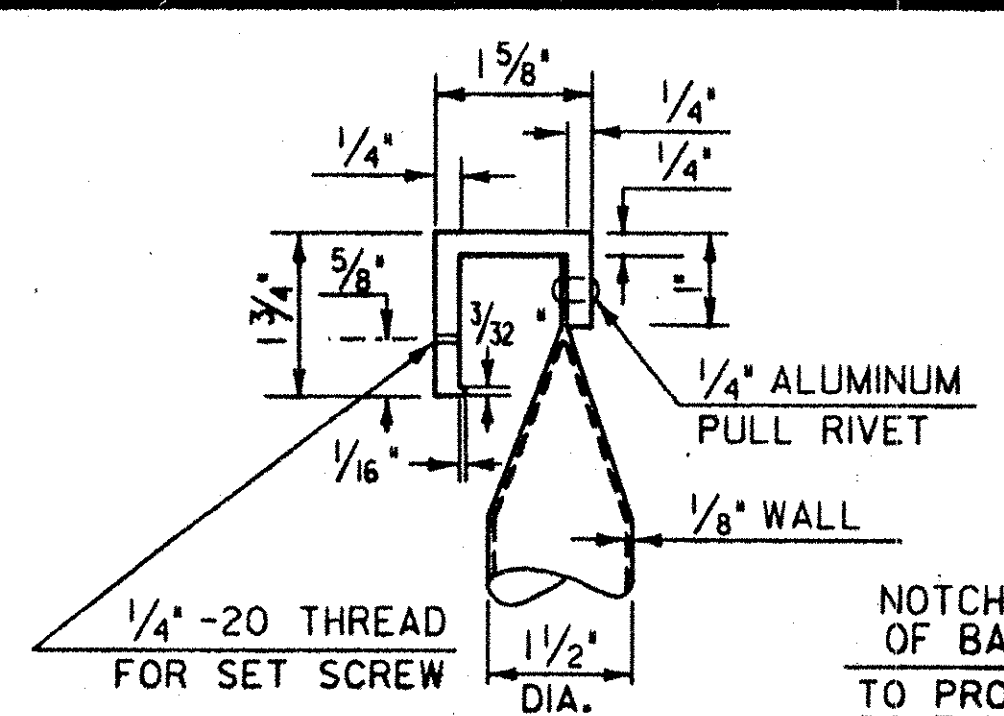


COPING DETAIL

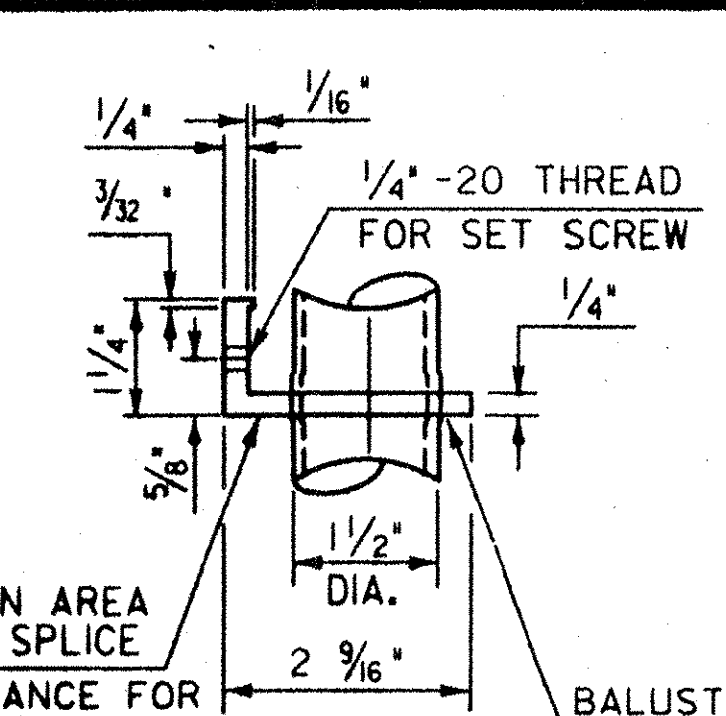


FRONT ELEVATION OF THREE RAIL WITH SPINDLES

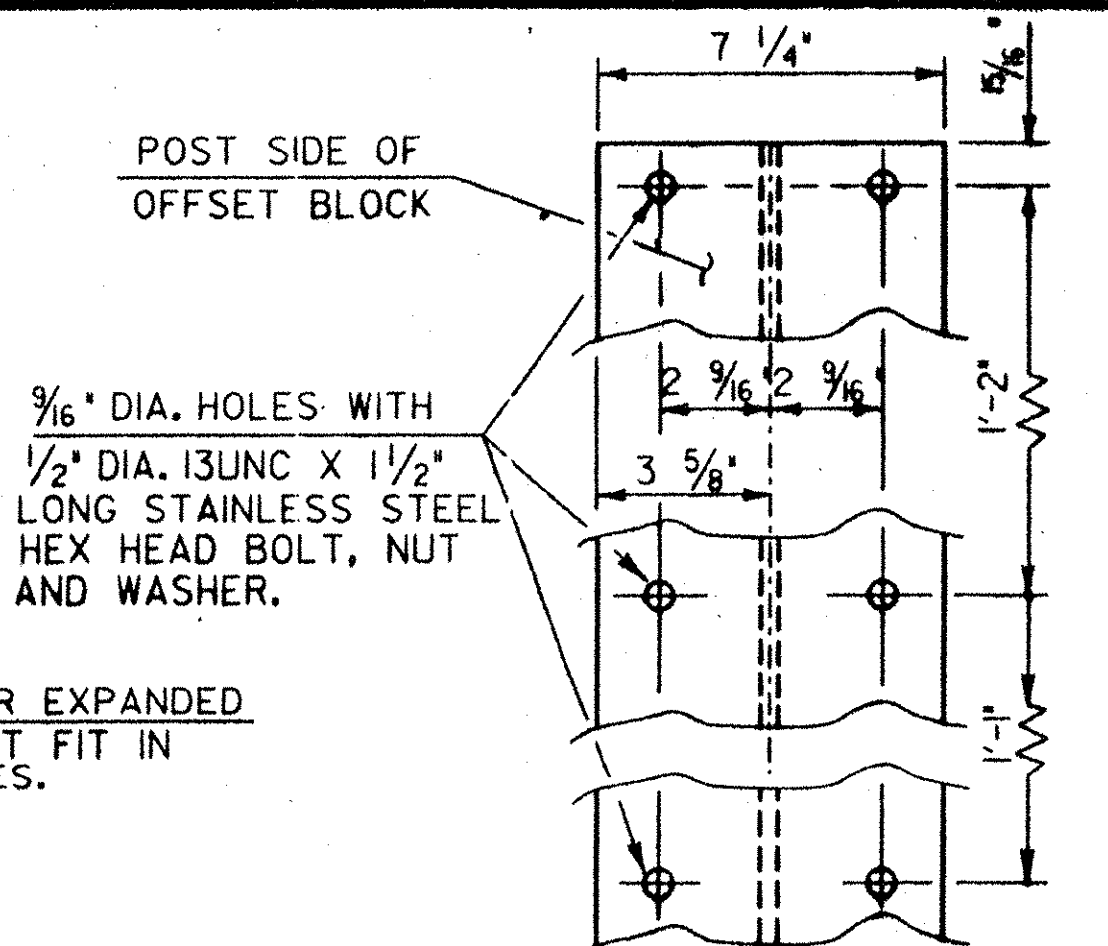
NOTE: RAIL POSTS ARE TO BE SET NORMAL TO GRADE UNLESS OTHERWISE DESIGNATED ON BRIDGE PLANS. ALL DIMENSIONS ARE TYPICAL UNLESS OTHERWISE DESIGNATED ON BRIDGE PLANS.



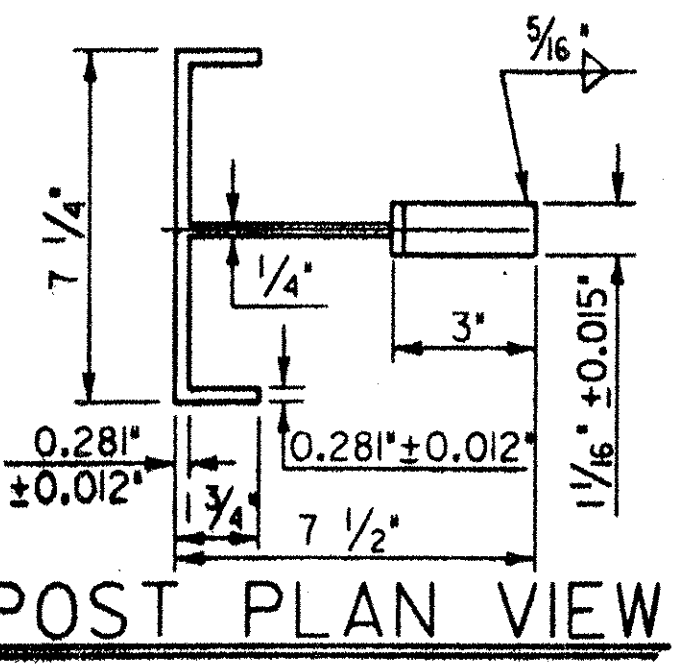
DETAIL A



DETAIL B

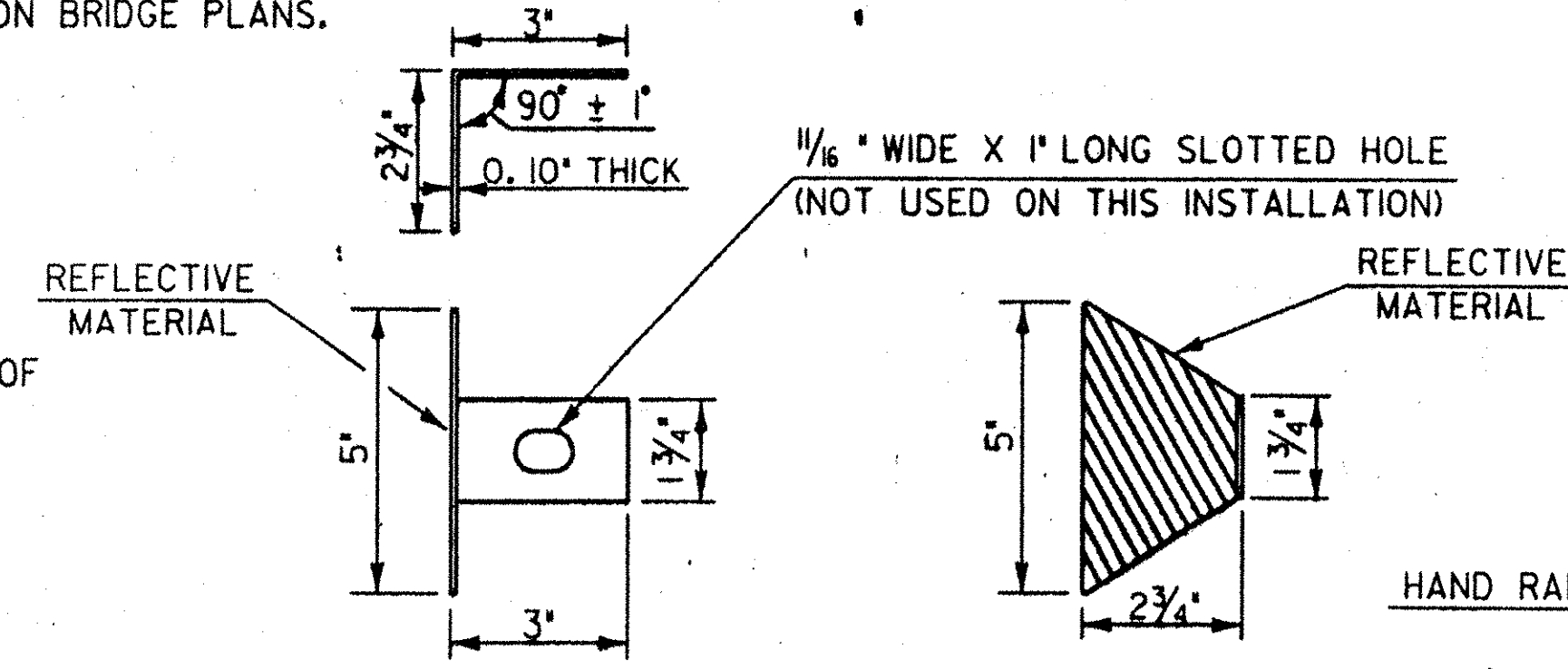


OFFSET BLOCK CONNECTION



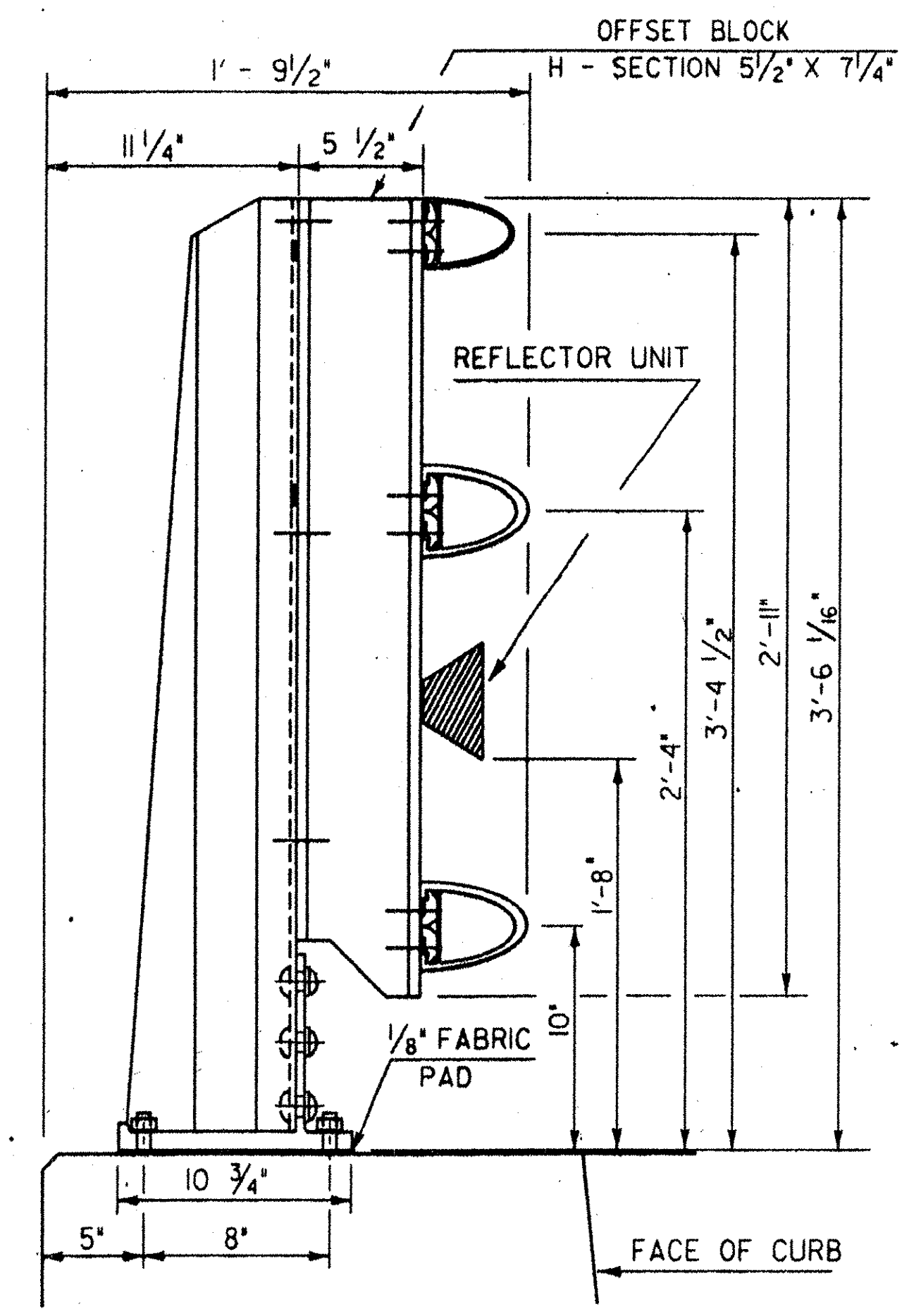
POST PLAN VIEW

THIS REFLECTORIZED ALUMINUM DELINEATOR IS TO BE ERECTED EVERY 30 FEET (OR CLOSEST POST) WITH 2 NO. 8 X 3/4" SELF-TAPPING SCREWS. DELINEATORS SHALL MEET SPECIFICATION REQUIREMENTS FOR ASTM B209 ALLOY 5052-H32. REFLECTIVE MATERIAL SHALL MEET THE REQUIREMENTS OF SUBSECTION 750.08 AND SHALL BE OF ENCAPSULATED LENS SILVER OR AMBER. AMBER IS TO BE INSTALLED ON THE DRIVER'S LEFT AND SILVER ON THEIR RIGHT. PAYMENT SHALL BE SUBSIDIARY TO ALL OTHER ITEMS.

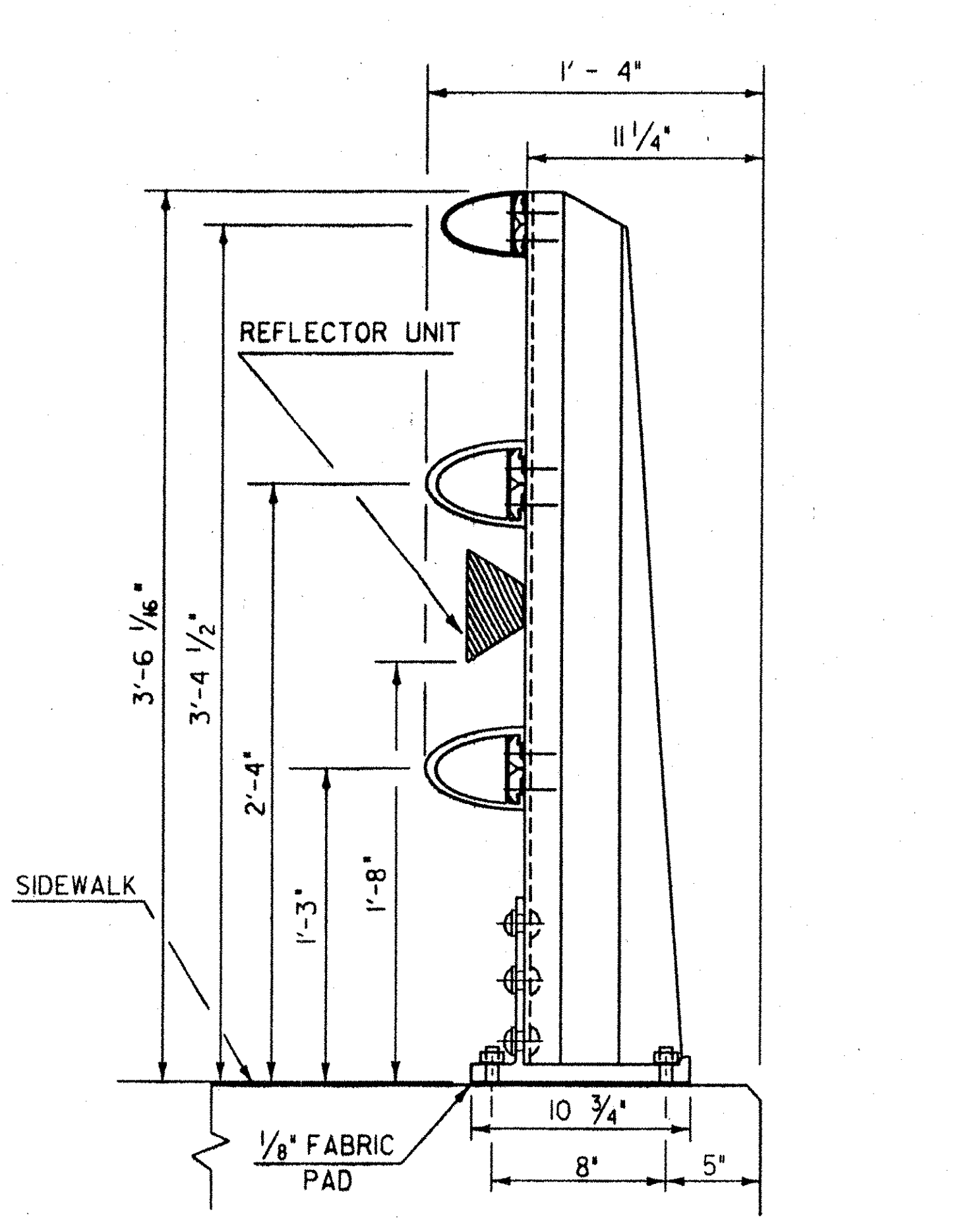


REFLECTOR DETAILS

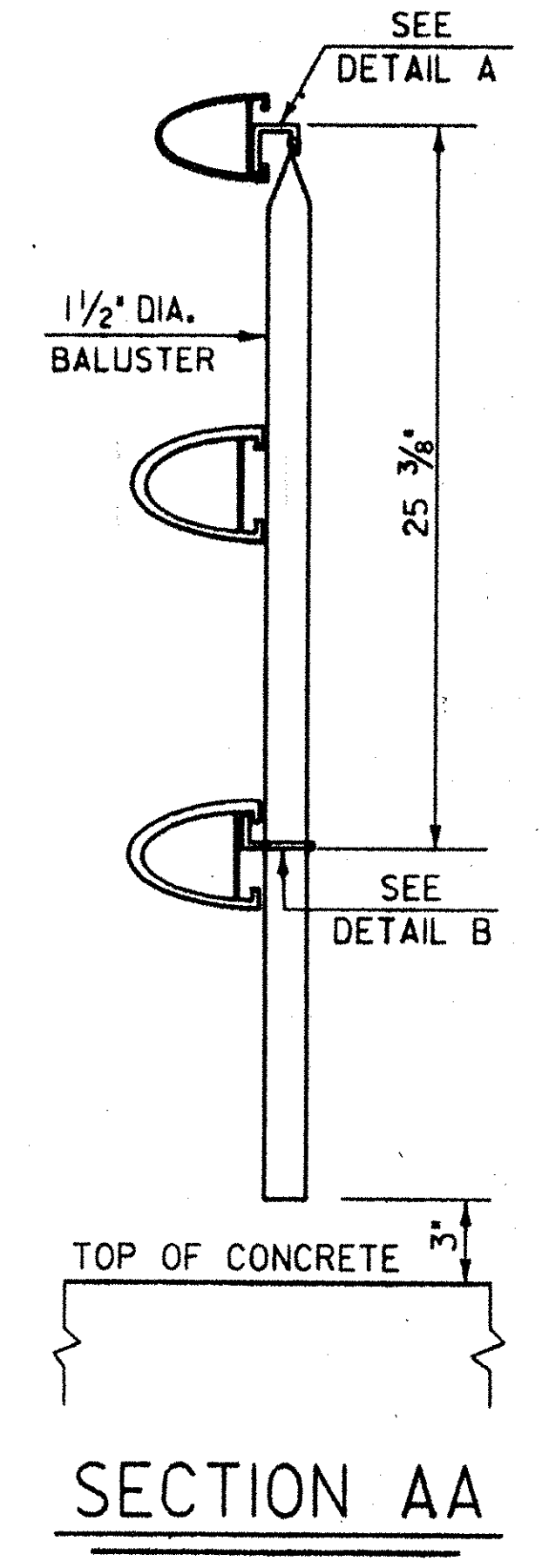
ALLOWABLE STRESSES:  
RAILING: 21,000 PSI TENSION  
22,000 PSI COMPRESSION  
POSTS: 17,000 PSI TENSION  
19,000 PSI COMPRESSION



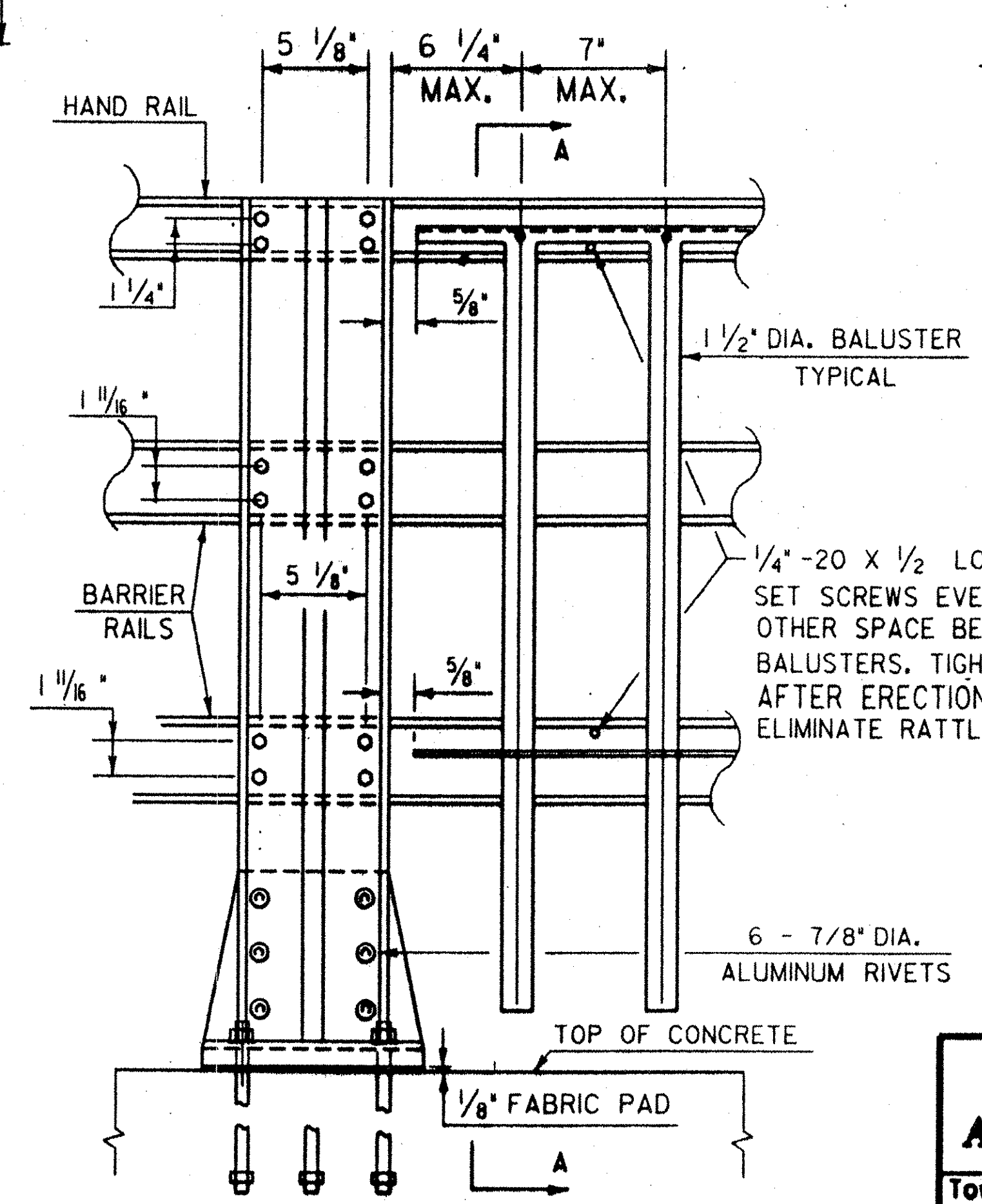
SIDE ELEVATION OF THREE RAIL TO BE USED ON CURB SIDE



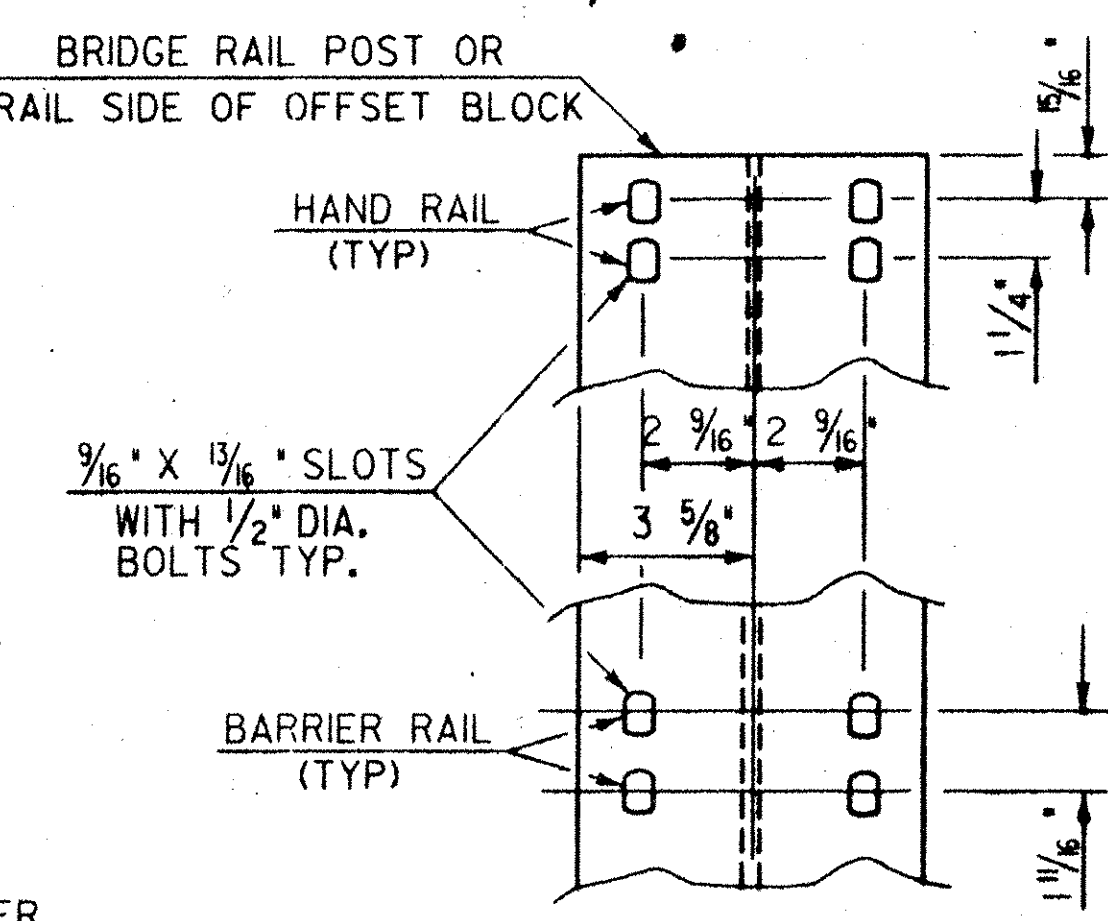
SIDE ELEVATION OF THREE RAIL TO BE USED ON SIDEWALK SIDE



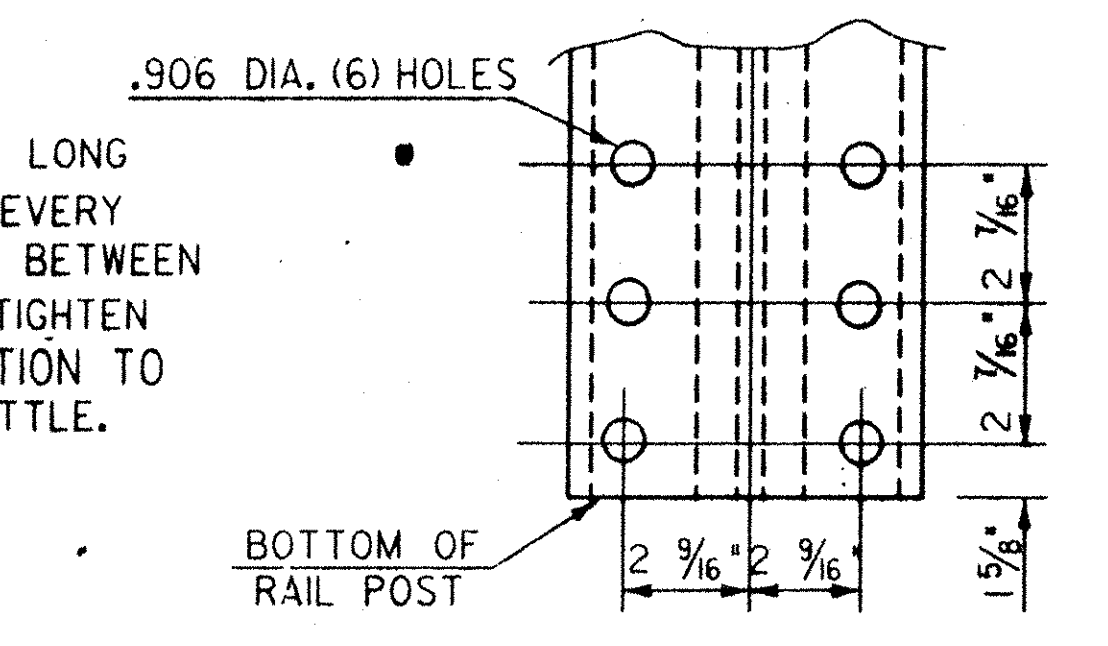
SECTION AA



OUTSIDE ELEVATION OF THREE RAIL POST & SPINDLES



RAIL CONNECTION



POST BASE BOLT HOLE DETAILS

RAIL POST DETAILS ON SUPERSTRUCTURE

DETAILS OF SPINDLES FOR ALUMINUM RAILING

<b>STATE OF VERMONT</b>	
<b>AGENCY OF TRANSPORTATION</b>	
Town Of <b>ROYALTON</b>	Bridge No. <b>21</b>
Highway No. <b>VT. ROUTE 14</b>	Log. Sta.
	Surv. Sta.
<b>VT. ROUTE 14 OVER THE WHITE RIVER</b>	
<b>ALUMINUM BRIDGE RAILING DETAILS</b>	
Designed By	Drawn By
Checked By	Date
	Bridge Design Supervisor
	Date
PROJECT <b>ROYALTON</b>	PROJECT NO. <b>BRS 0147(5)S</b>
L.C. Info. <b>ZHIL30J50TSBRI9LDGN</b>	IPARM:SBRI9ISHI
Bridge Sheet No.	Sheet 50 of 76