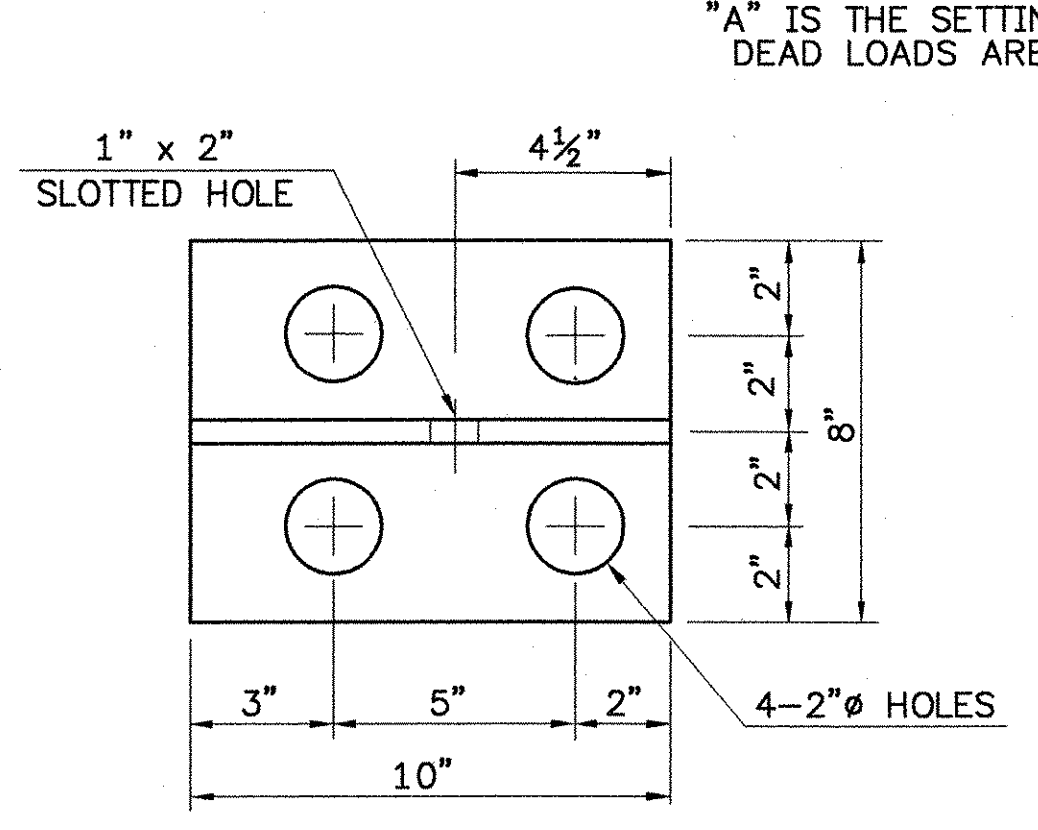


TEMP	"A" DIST
0°F	1 1/8"
15°F	1 1/4"
30°F	1 5/8"
45°F	1 1/2"
60°F	1 3/8"
75°F	1 1/4"
90°F	1 1/8"
105°F	1"

TYPICAL SECTION BETWEEN GIRDERS AT ABUT #1
SCALE: 3" = 1'-0" (NORMAL TO CL BRG.)

TYPICAL SECTION AT GIRDERS AT ABUT #1
SCALE: 3" = 1'-0" (NORMAL TO CL BRG.)

- DETAILS ON THIS SHEET ARE FOR ITEM 516.10 "BRIDGE EXPANSION JOINT".
- PREFORMED FABRIC MATERIAL SHALL BE CONTINUOUS AND SHALL CONFORM TO SUBSECTION 707.07 OF THE 2001 STANDARD SPECIFICATIONS.
- BUTYL RUBBER TAPE SHALL CONFORM TO AASHTO SPECIFICATION M-198, TYPE II.
- THE FINAL FINISH OF THE EXPANSION DEVICE SHALL BE COVERED DURING THE PLACING OF BRIDGE DECK CONCRETE.
- ALL STEEL COMPONENTS SHALL BE AASHTO M270 GRADE 36 GALVANIZED OR METALIZED AS PER SUBSECTION 506.15 (a) OR (b) OF THE 2001 STANDARD SPECIFICATIONS UNLESS OTHERWISE NOTED. THREADED RODS SHALL BE AASHTO M223 (ASTM A572), GRADE 50. NUTS AND WASHERS AASHTO M164 (ASTM A325).
- THE ITEM "BRIDGE EXPANSION JOINT" SHALL INCLUDE THE FABRICATION AND ERECTION OF THE COMPLETE JOINT ASSEMBLY INCLUDING ALL STEEL PLATES, BRACKETS, ANGLES, WELDED STUDS OR RODS, PREFORMED FABRIC DRAIN TROUGH MATERIAL AND PLASTIC DRAIN TUBES, BUTYL RUBBER TAPE AND ANY OTHER MISCELLANEOUS MATERIAL NECESSARY TO INSTALL JOINT.
- THE 4" x 8" x 1/2" ANGLES SHALL BE FURNISHED AS ONE CONTINUOUS PIECE. THE 1 1/4" x 5 1/4" BARS EACH SIDE OF THE JOINT SHALL BE PROVIDED IN TWO EQUAL LENGTHS.
- COAT CONCRETE CONTACT SURFACES WITH AN EPOXY BONDING COMPOUND MEETING THE REQUIREMENTS OF SUBSECTION 719.02 OF THE 2001 STANDARD SPECIFICATIONS. PAYMENT SHALL BE INCLUDED IN THE UNIT PRICE BID FOR ITEM 516.10 "BRIDGE EXPANSION JOINT".
- A 1" DIAMETER PLASTIC DRAIN TUBE (PER STD. SPEC. 740.06) SHALL BE INSTALLED AS SHOWN AT THE FACE OF CURB ON BOTH SIDES. THE UPPER END IS TO BE PLUGGED WITH STEEL WOOL AND THE LOWER END IS TO EXTEND BELOW THE BOTTOM OF THE ADJACENT GIRDER. THE DRAIN TUBES SHALL BE FASTENED TO THE GIRDERS USING A METHOD APPROVED BY THE ENGINEER.
- FILL COUNTERBORED HOLES WITH HOT POURED JOINT SEALER (PER STD. SPEC. 707.06). PAYMENT FOR THE WORK SHALL BE SUBSIDIARY TO ITEM 516.10.
- PAYMENT FOR WATERSTOP SHALL BE SUBSIDIARY TO CONCRETE PAY ITEM.
- A DRIP BEAD OF 1/4" x 7" STRIP OF PREFORMED MATERIAL SHALL BE CEMENTED TO THE BOTTOM OF THE FABRIC TROUGH USING AN ADHESIVE APPROVED BY THE MANUFACTURER. THE DRIP BEAD SHALL BE APPLIED 1" FROM THE DOWNSPOUT END OF THE TROUGH.
- FABRIC TROUGH SHALL BE THOROUGHLY CLEANED AND FLUSHED AFTER PAVING OPERATION.
- THE EXPANSION JOINT SHALL BE SHOP ASSEMBLED AND SHIPPED AS ONE UNIT.



BRACKET PLAN
SCALE: 3" = 1'-0"

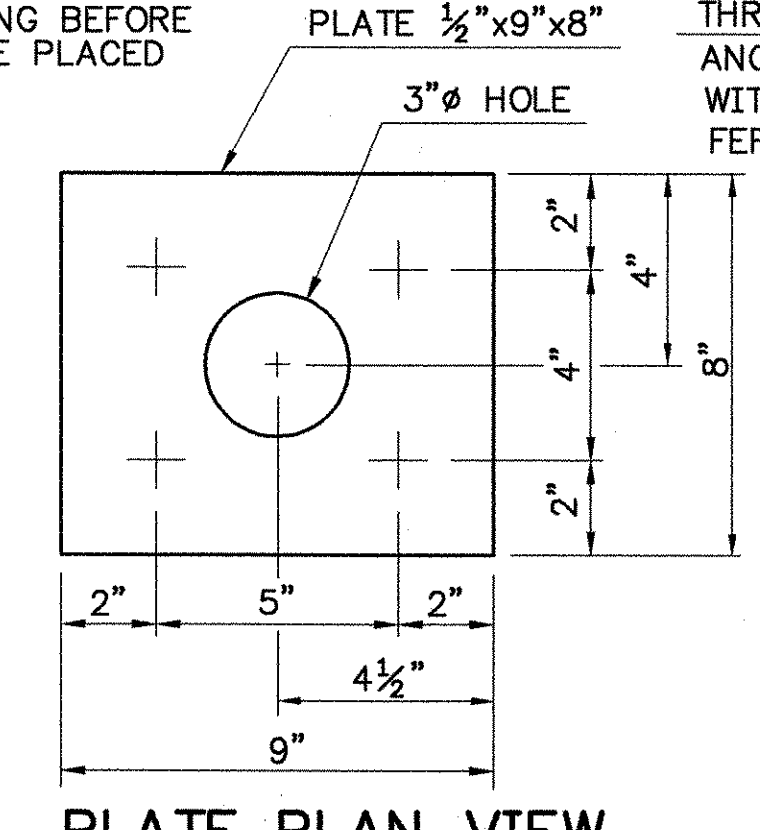
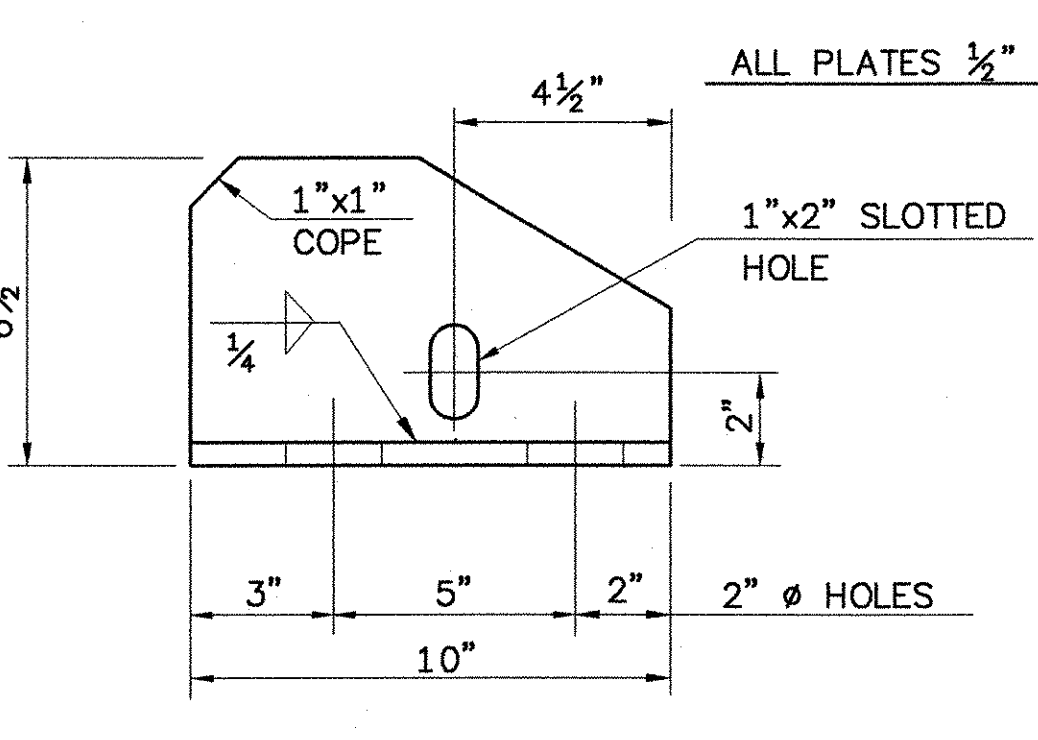
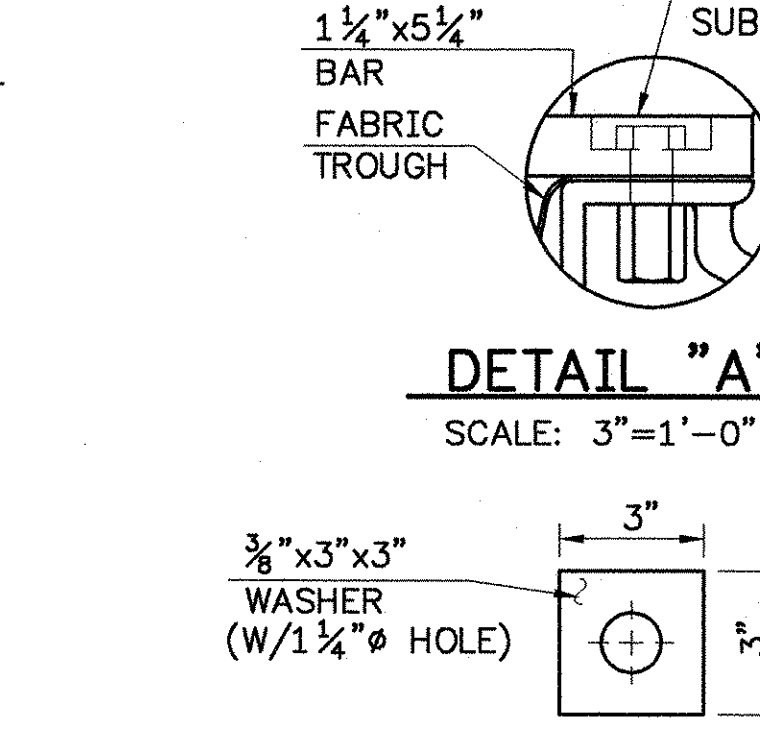


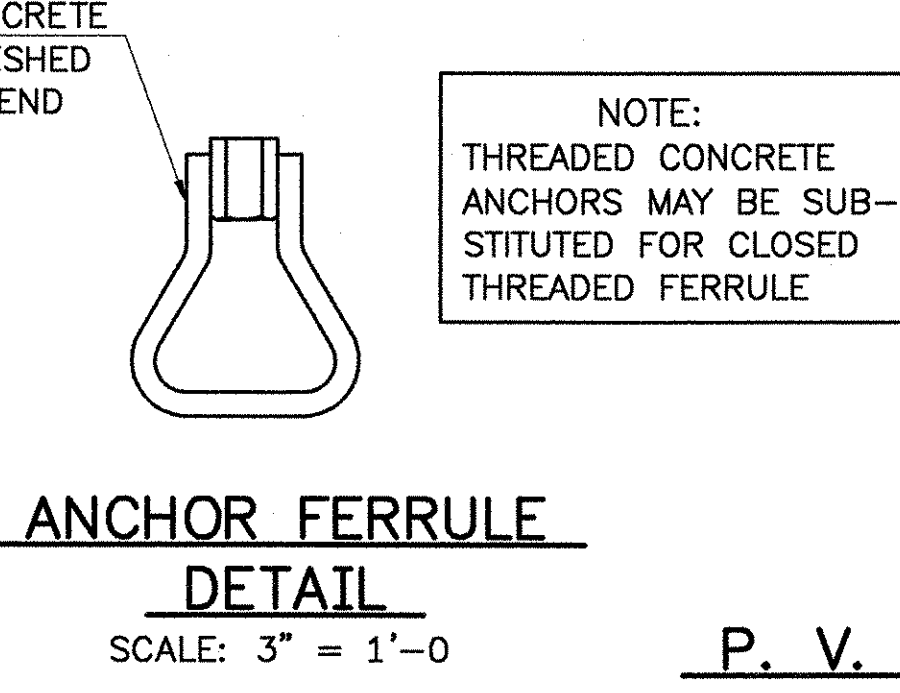
PLATE PLAN VIEW
SCALE: 3" = 1'-0"



BRACKET ELEVATION
SCALE: 3" = 1'-0"

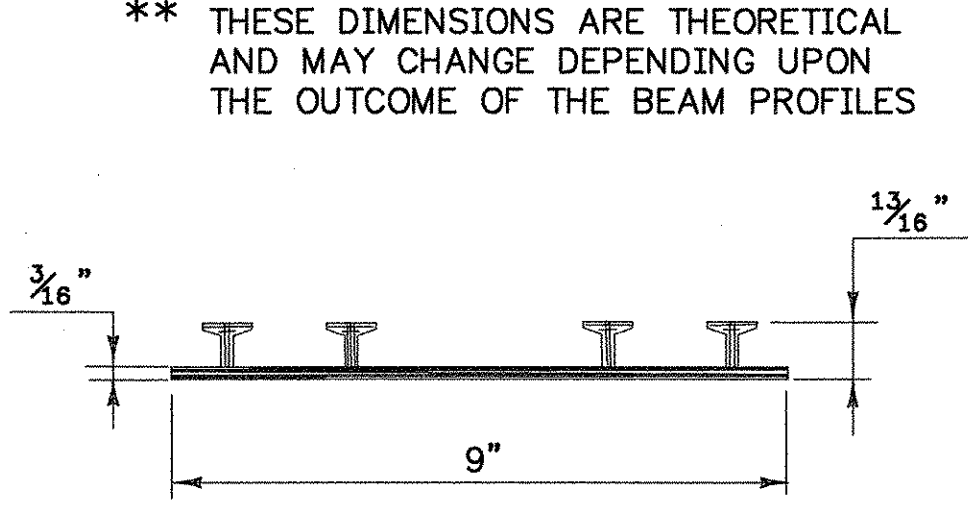


WASHERS FOR BRACKETS
SCALE: 3" = 1'-0"



ANCHOR FERRULE DETAIL
SCALE: 3" = 1'-0"

NOTE: THREADED CONCRETE ANCHORS MAY BE SUBSTITUTED FOR CLOSED THREADED FERRULE



P. V. C. WATERSTOP FOR CONSTRUCTION JOINTS

THE COSTS FOR P. V. C. WATERSTOP SHALL BE INCLUDED IN THE UNIT PRICE BID FOR CONCRETE. OTHER CONFIGURATIONS MAY BE USED UPON APPROVAL OF THE STRUCTURES ENGINEER.

STATE OF VERMONT AGENCY OF TRANSPORTATION			
Town Of	ROYALTON	Bridge No.	21
Highway No.	VT RTE 14	Log Sta.	
VT RTE 12A OVER 3RD BRANCH OF THE WHITE RIVER		Surv. Sta.	
EXPANSION JOINT DETAILS (10F 2)			
Designed By	AS	Drawn By	VAOT/KBG
Modified & Checked By	Date	CLD Project Manager	
CLW/LMM	11/00	LMM	Date 1/00
PROJECT	ROYALTON	PROJECT NO.	BRS 0147(5) S
I.G.C. Info. Translated To AutoCAD			
Bridge Sheet No.	Sheet	47	Of 76



91298EX.dwg (1=4) (plot)