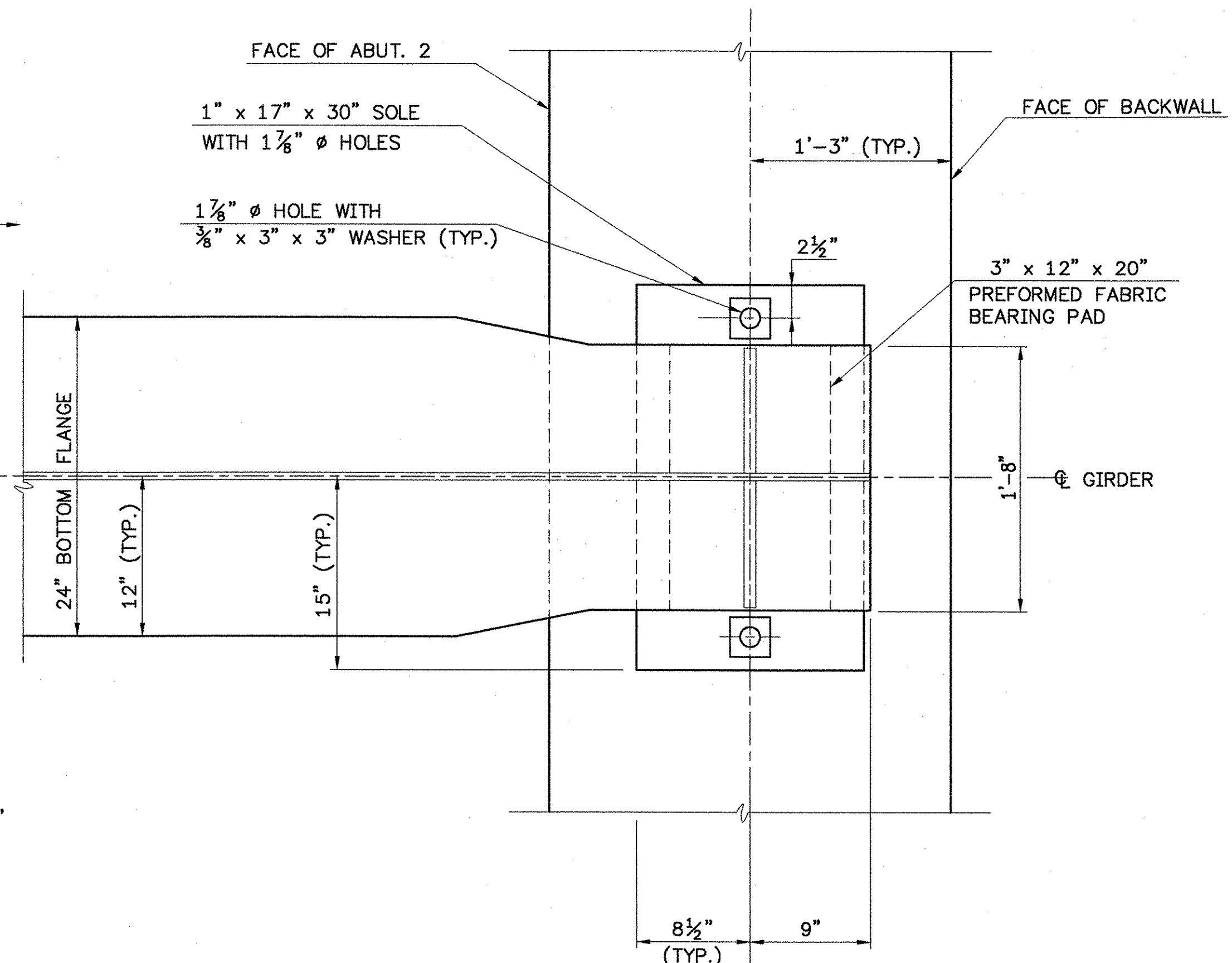
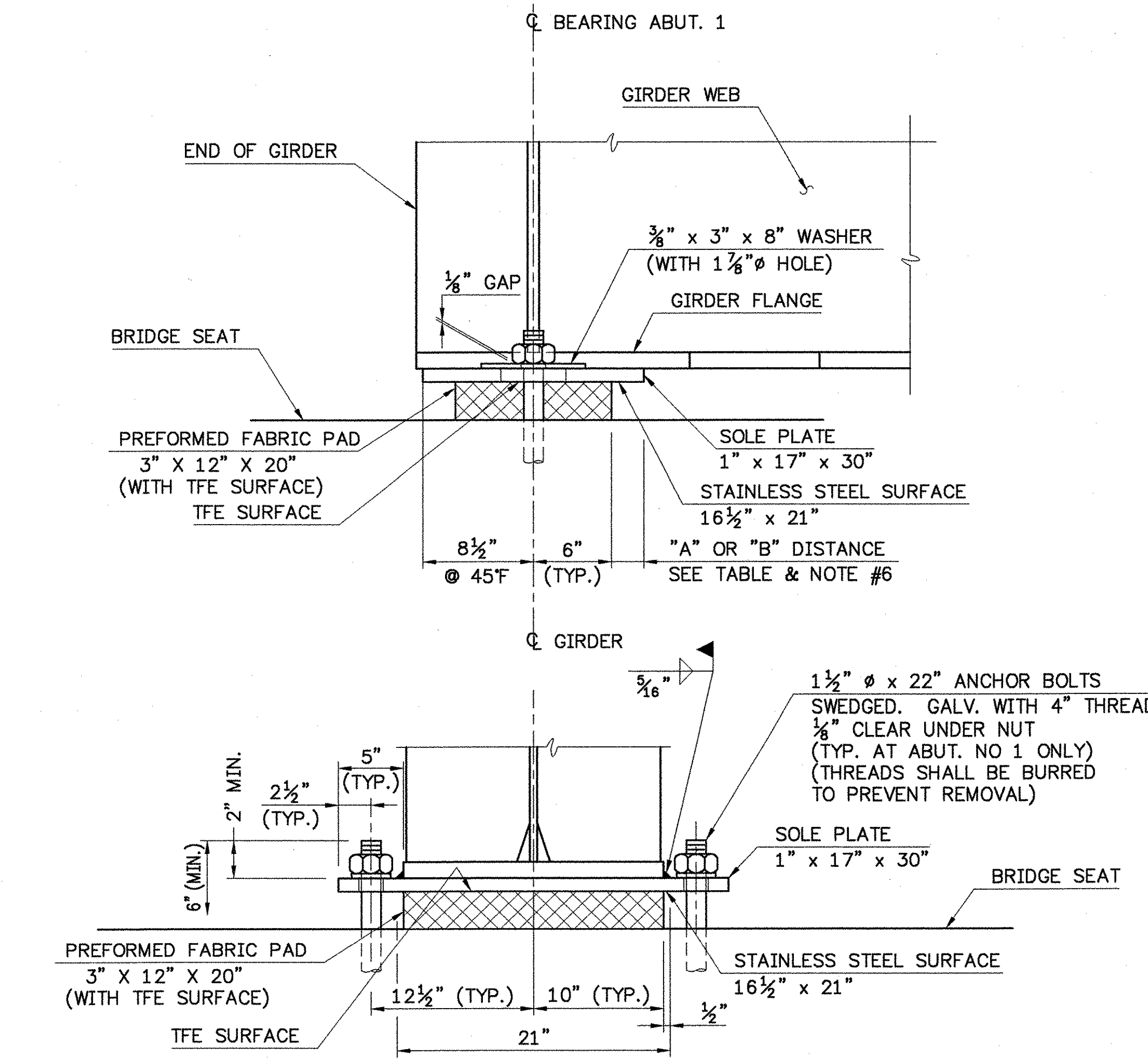


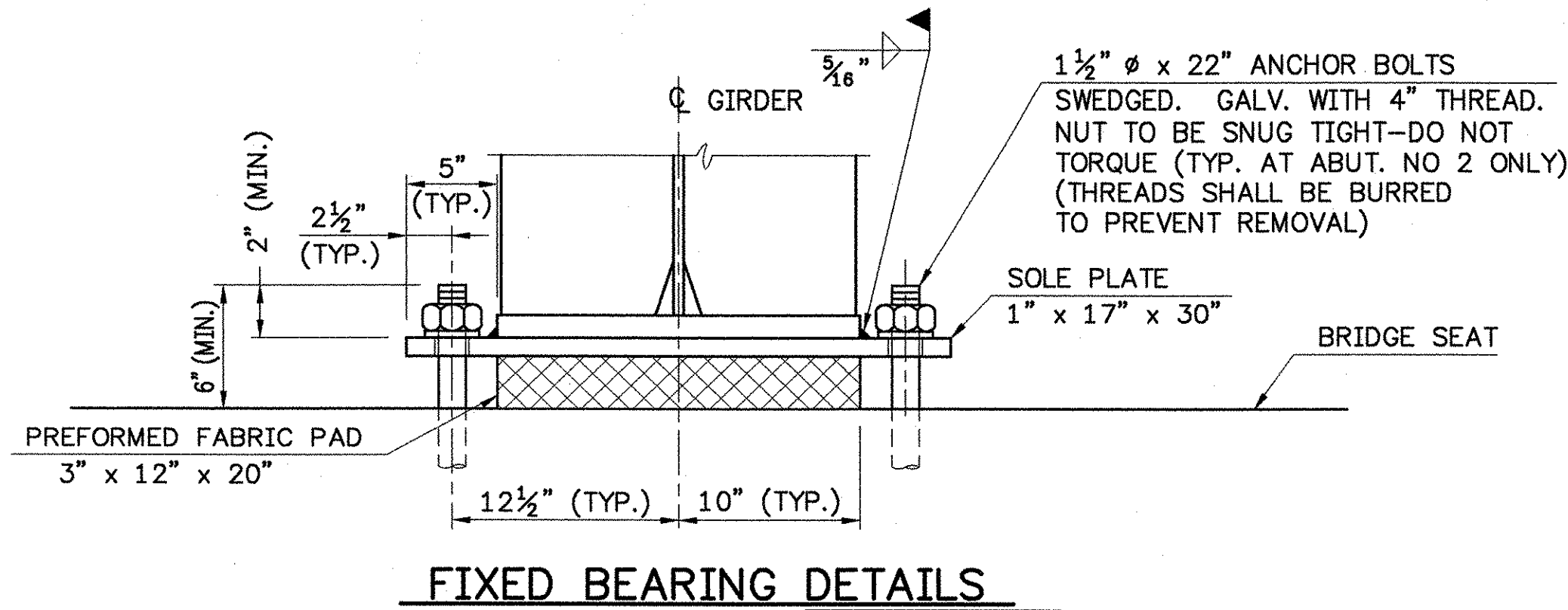
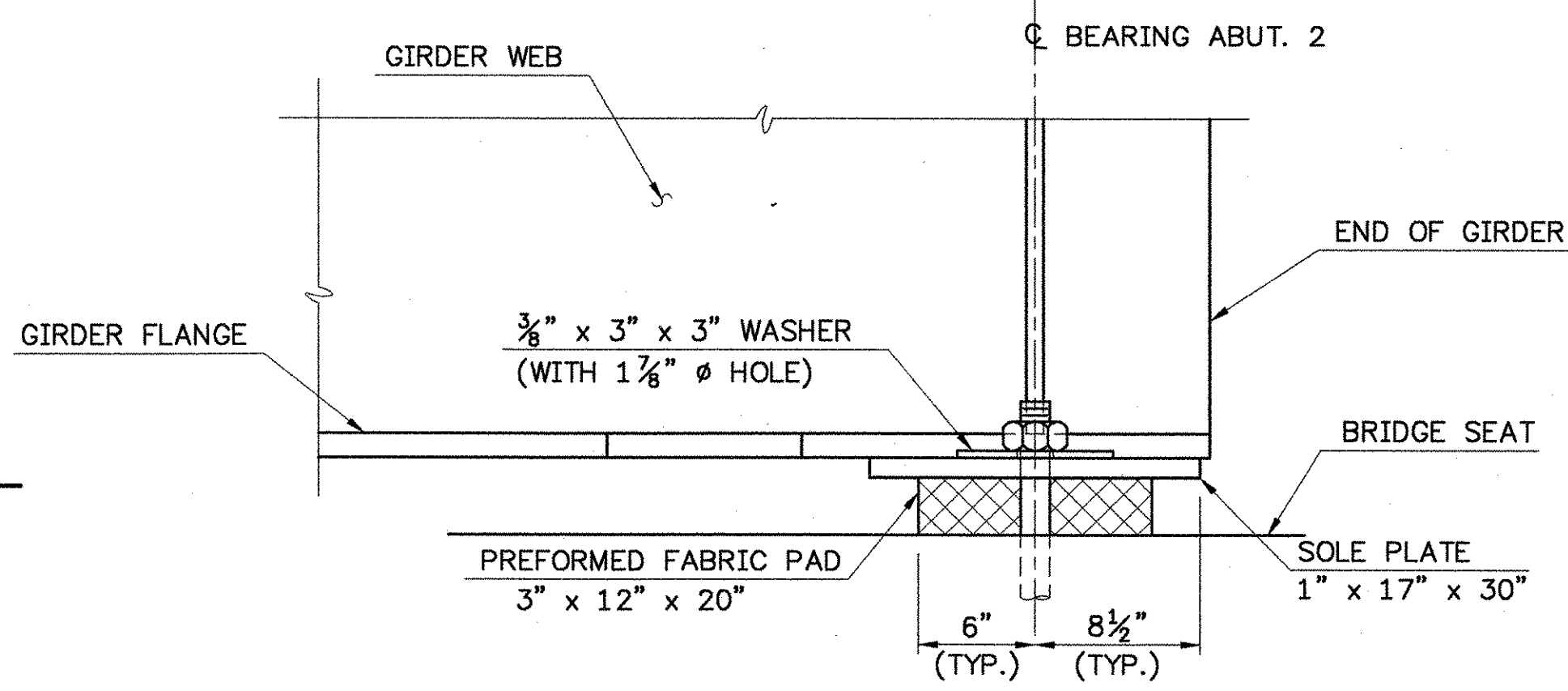
**PLAN**  
SCALE: 1 1/2"=1'-0"



**SIDE ELEVATION**  
SCALE: 1 1/2"=1'-0"



**FRONT VIEW**  
SCALE: 1 1/2"=1'-0"



**FIXED BEARING DETAILS**

**BEARING NOTES:**

- BEARINGS SHALL CONFORM TO APPLICABLE SUBSECTIONS OF SECTION 531 AND 731 OF THE 2001 STANDARD SPECIFICATIONS. BEARINGS SHALL BE PREFORMED FABRIC BEARING.
- BEARINGS SHALL BE PAID FOR UNDER THE ITEM 531.10 "BEARING DEVICE ASSEMBLY".
- SHOP DRAWINGS CONFORMING TO SUBSECTION 531.03 OF THE 2001 STANDARD SPECIFICATIONS SHALL BE SUBMITTED TO INCLUDE WELDING AND BONDING PROCEDURES.
- FABRICATION DRAWINGS SHALL IDENTIFY THE NUMBER OF LAYERS OF VULCANIZED SHEETS AND CORRESPONDING SHEET THICKNESS TO BE USED FOR FABRICATING THE BEARING PAD AND SHALL INCLUDE DETAILED PROCEDURES FOR BONDING THESE SHEETS TOGETHER.
- THE CONCRETE SURFACE UNDER THE BEARING DEVICE SHALL BE LEVEL.
- "A" DISTANCE IS THE FINAL SETTING FOR THE BEARING AFTER THE CONCRETE SLAB, CURB, PAVEMENT AND BRIDGE RAIL ARE PLACED. "B" DISTANCE IS LISTED FOR SETTING THE BEARING AFTER THE STRUCTURAL STEEL IS ERECTED AND BEFORE THE CONCRETE DECK IS POURED. THE DIFFERENCE IS THE THEORETICAL ELONGATION OF THE BOTTOM FLANGE DUE TO THE DEAD LOAD DEFLECTION. THE FINAL "A" DISTANCE, AS SHOWN IN THE TABLE, MUST BE ATTAINED WITHIN 1/8".
- DESIGN CRITERIA:
  - AVERAGE BEARING PRESSURE = 800 PSI
  - MINIMUM ALLOWABLE DESIGN ROTATION = 0.015 RADIAN
  - HORIZONTAL CAPACITY SHALL BE A MINIMUM OF 10% OF THE VERTICAL DESIGN LOAD (WITHOUT IMPACT).
  - DESIGN LOAD PER BEARING = 169 KIPS (DEAD LOAD PLUS LIVE LOAD WITHOUT IMPACT).
- ALL STEEL IN BEARING DEVICES (EXCEPT STAINLESS) SHALL BE AASHTO M270 GRADE 36.
- ANCHOR BOLTS SHALL HAVE A MINIMUM OF 15" EMBEDMENT INTO THE CONCRETE AND SHALL CONFORM TO SUBSECTION 714.08 OF THE 2001 STANDARD SPECIFICATIONS.
- ALL BEARING DEVICES SHALL BE GALVANIZED OR METALIZED AS PER SUBSECTIONS 531.04(b) AND 506.15 OF THE 2001 STANDARD SPECIFICATIONS AS MODIFIED BY THE GENERAL SPECIAL PROVISIONS FOR ALL PROJECTS. AREAS OF GALVANIZING OR METALIZING DAMAGED BY FIELD WELDING OR HANDLING SHALL BE REPAIRED PER SUPPLEMENT SPECIFICATION SUBSECT 513.06(f).
- ALL THE ANCHOR BOLTS, NUTS AND WASHERS SHALL BE GALVANIZED. ALL WASHERS SHALL BE 3/8" PLATE (MINIMUM). PAYMENT FOR ANCHOR BOLTS, NUTS AND WASHERS SHALL BE INCLUDED IN THE UNIT BID PRICE FOR ITEM 531.10 "BEARING DEVICE ASSEMBLY".

**BEARING SETTING DIMENSIONS**

TEMP	"A" DIST.	"B" DIST.
0°F	2 1/16"	3 9/16"
15°F	2 1/16"	3 1/16"
30°F	2 3/16"	3 1/2"
45°F	2 1/2"	3 5/8"
60°F	2 3/8"	2 13/16"
75°F	2 1/2"	2 13/16"
90°F	2 1/16"	2 13/16"
105°F	1 7/8"	2 1/2"

**STATE OF VERMONT  
AGENCY OF TRANSPORTATION**

Town Of	ROYALTON	Bridge No.	21
Highway No.	VT. ROUTE 14	Log Sta.	
		Surv. Sta.	
VT. Route 14 over the White River			
<b>BEARING DETAILS</b>			
Designed By	VES	Drawn By.	VES
Checked By	Date	Bridge Design Supervisor	
CLW/LMM	11/00	LMM	Date 11/00
<b>PROJECT</b>	ROYALTON	<b>PROJECT NO.</b>	BRS 0147(5) S
I.G.C. Info.			
Bridge Sheet No.		Sheet	45 Of 76



912985HZ.dwg