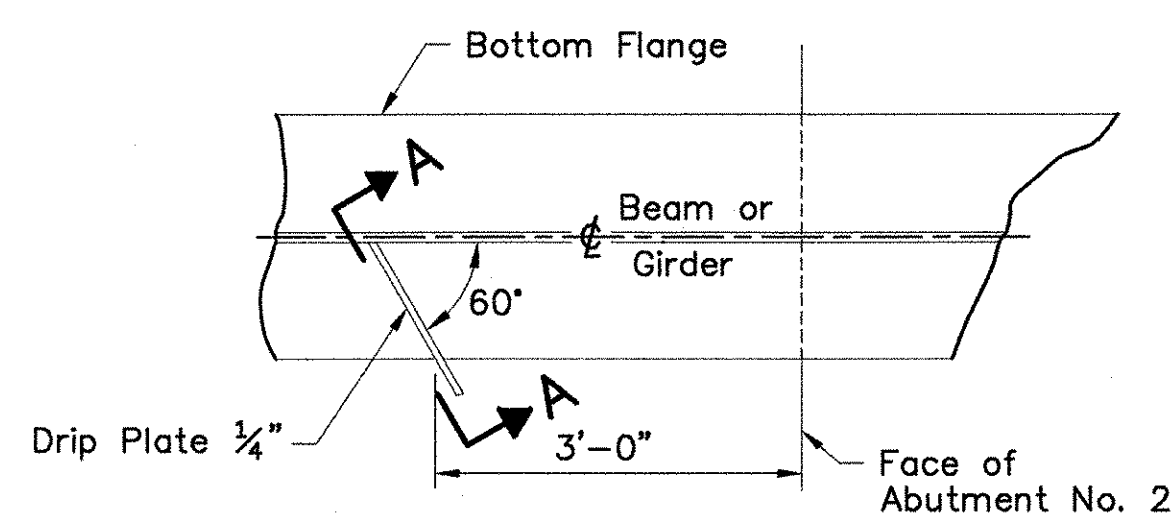


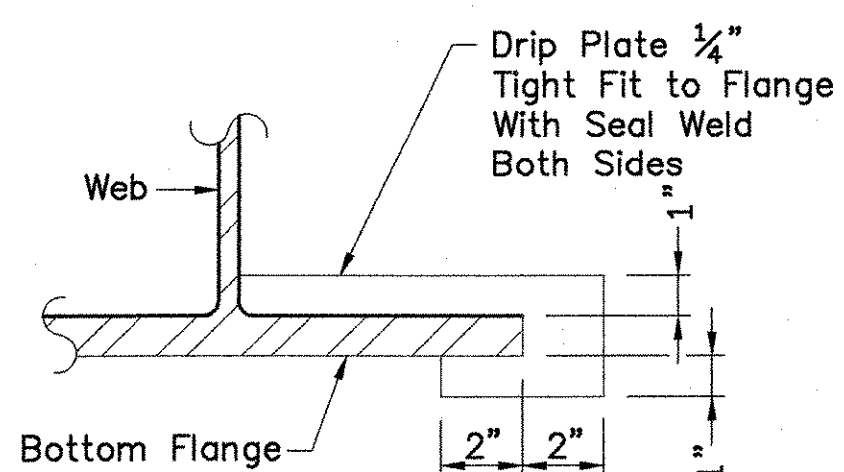
FRAMING PLAN

Scale: $\frac{3}{16}''=1'-0''$



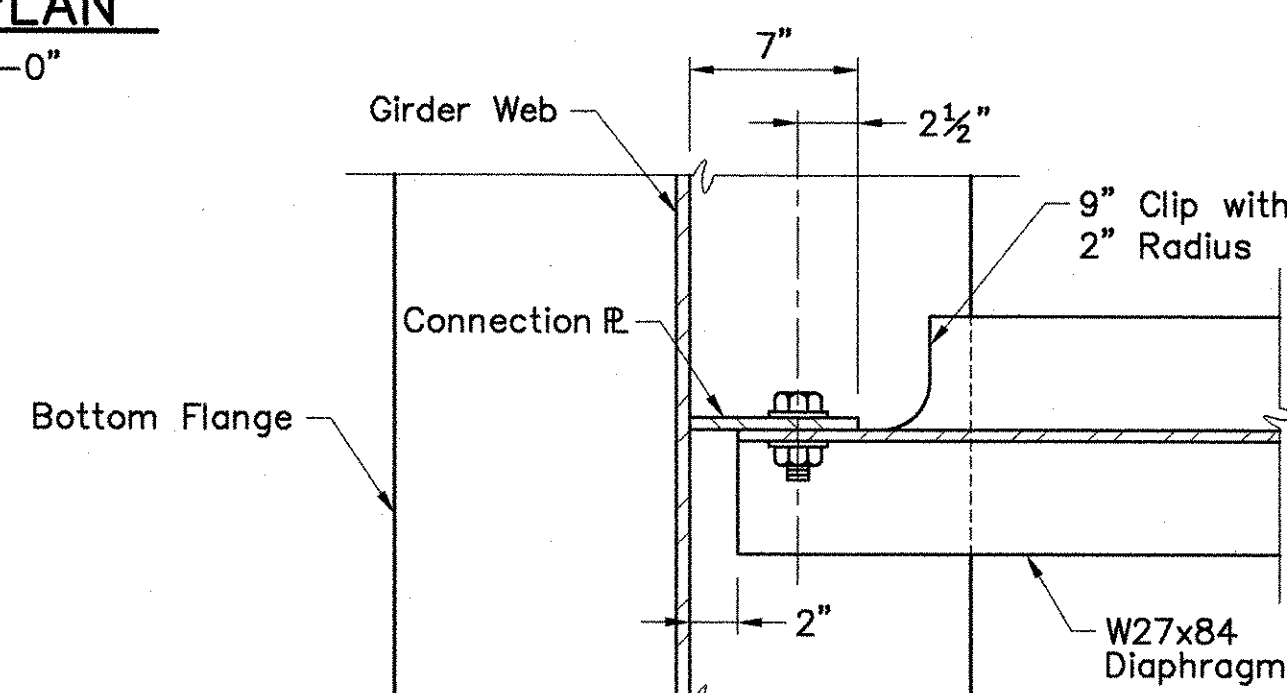
PLAN DRIP PLATE

N.T.S.



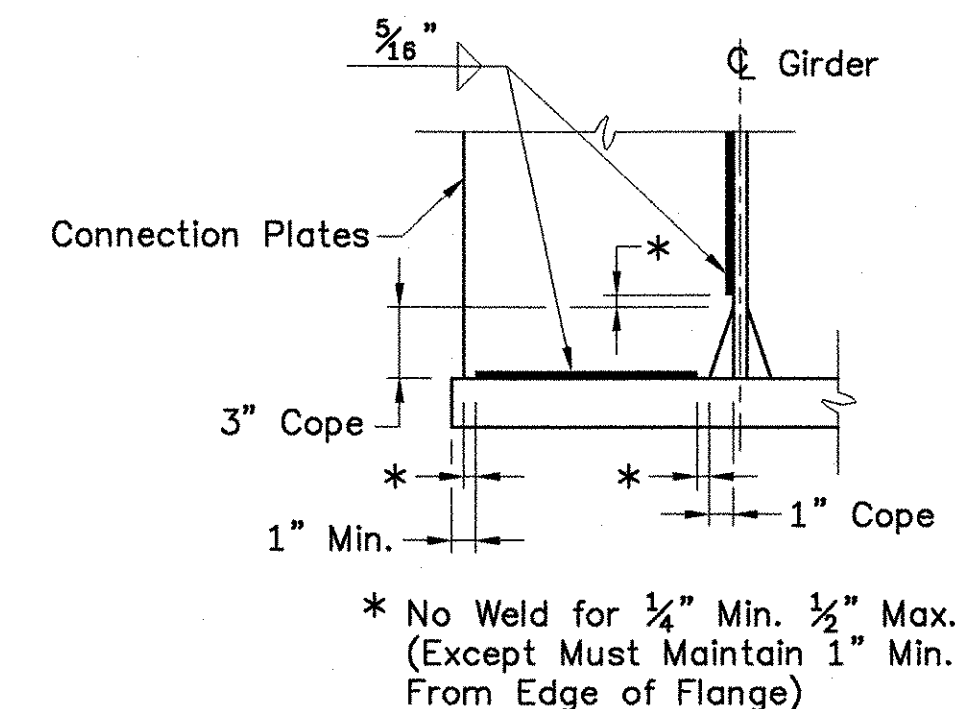
SECTION A-A

N.T.S.



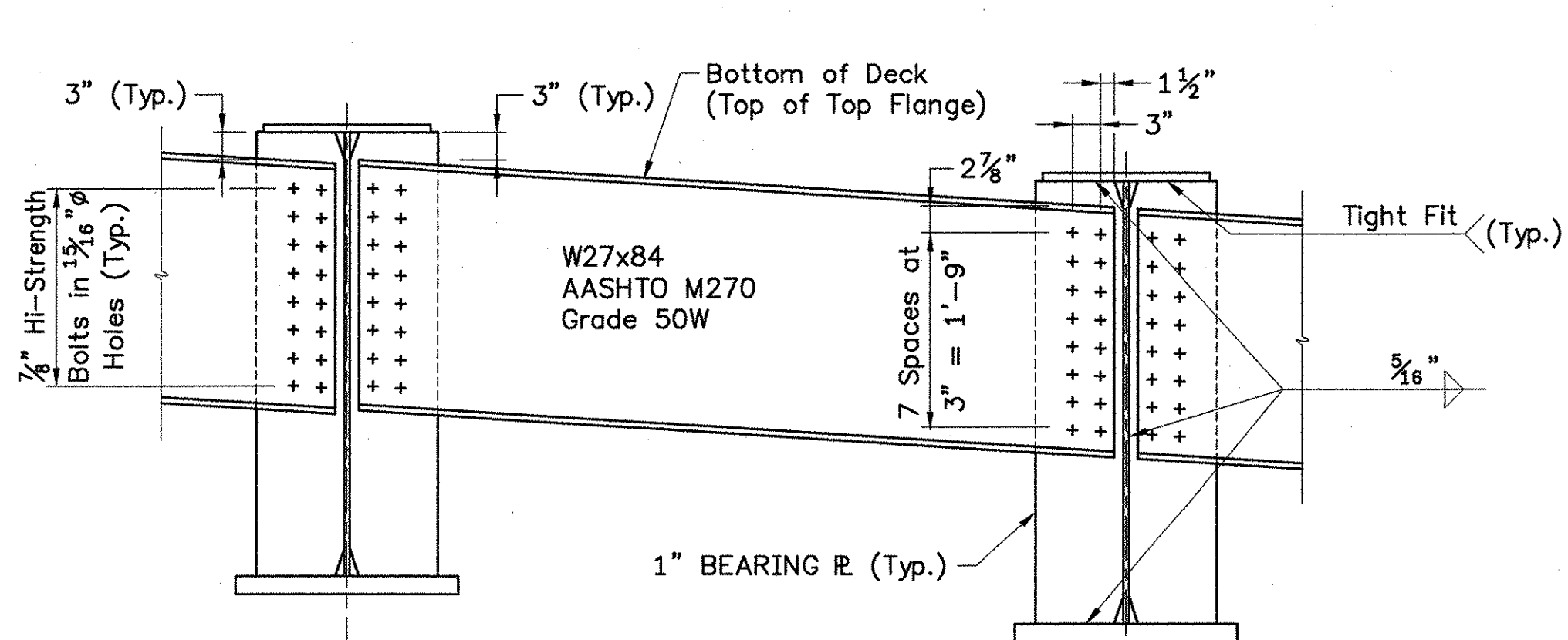
SECTION B-B

Scale: $1\frac{1}{2}''=1'-0''$



WELD TERMINATION AND COPING DETAILS

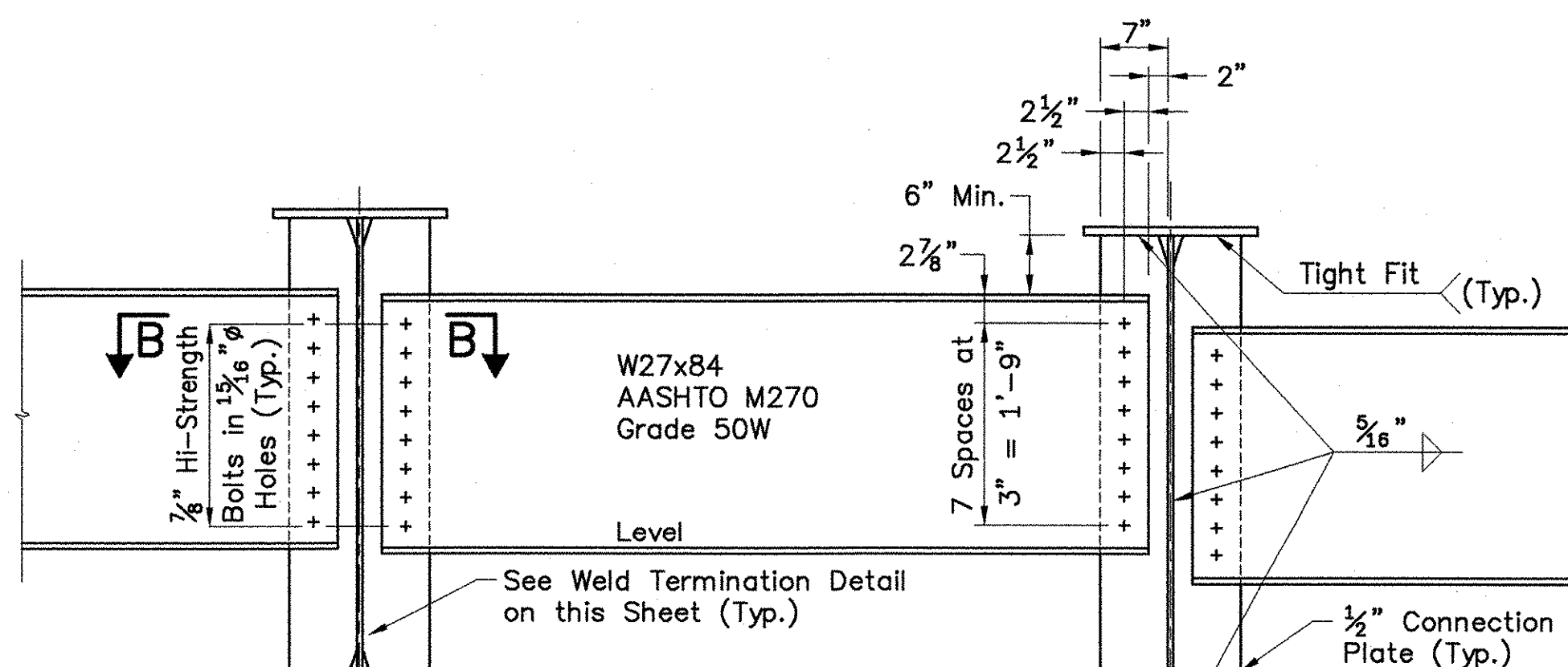
Scale: $1\frac{1}{2}''=1'-0''$



TYPICAL DIAPHRAGM DETAILS AT ABUTMENTS

Scale: $\frac{3}{4}''=1'-0''$

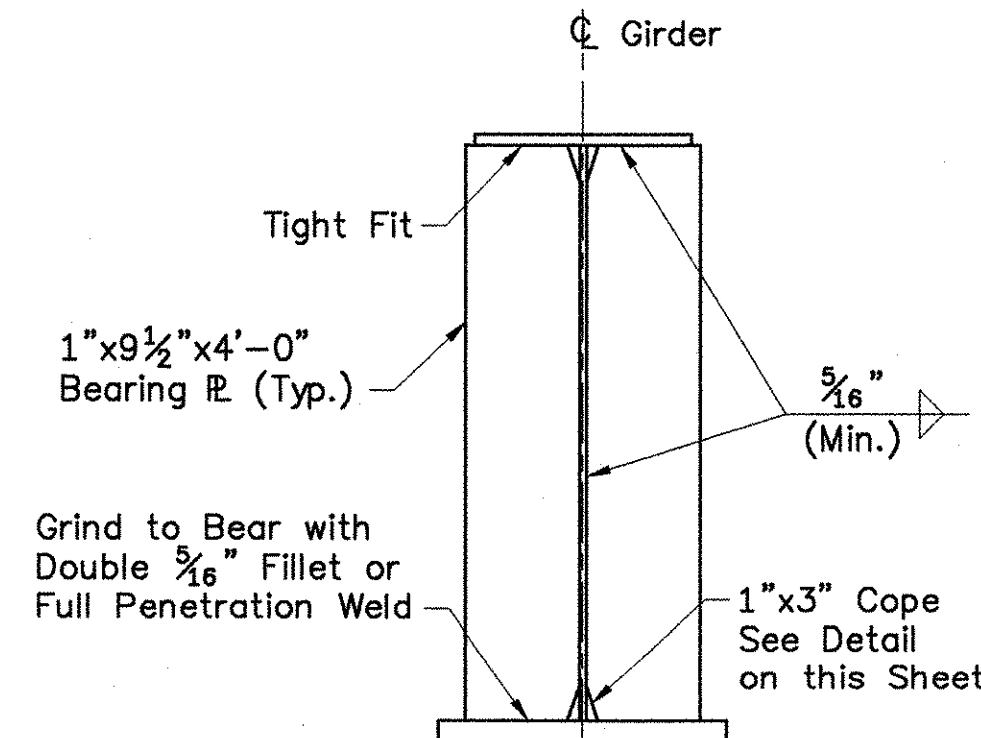
The Ends of the W27x84 Diaphragms at Each Abutment are to be Cut to be Vertical in the Erected Position.



TYPICAL INTERMEDIATE DIAPHRAGM

Scale: $\frac{3}{4}''=1'-0''$

Note: HI-Strength Bolts, Nuts and Washers Shall Conform to AASHTO Designation M164.



TYPICAL BEARING STIFFENERS AT ABUTMENTS

Scale: $\frac{3}{4}''=1'-0''$

STATE OF VERMONT AGENCY OF TRANSPORTATION

Town Of	ROYALTON	Bridge No.	21
Highway No.	VT. ROUTE 14	Log Sta.	
		Surv. Sta.	

VT. Route 14 over the First Branch of the White River

FRAMING PLAN

Designed By	AS	Drawn By	SEN
Checked By	Date	Bridge Design Supervisor	Date
CLW/LMM	11/00	LMM	Date 11/00

PROJECT	ROYALTON	PROJECT NO.	BRS 0147(5) S
----------------	----------	--------------------	---------------

I.G.C. Info.	Bridge Sheet No.	Sheet	43 Of 76
--------------	------------------	-------	----------



Costello Lomax & de Napoli, Inc.
Consulting Engineers
540 Commercial Street
Manchester, NH 03101
(603)668-8223 FAX(603)668-8802