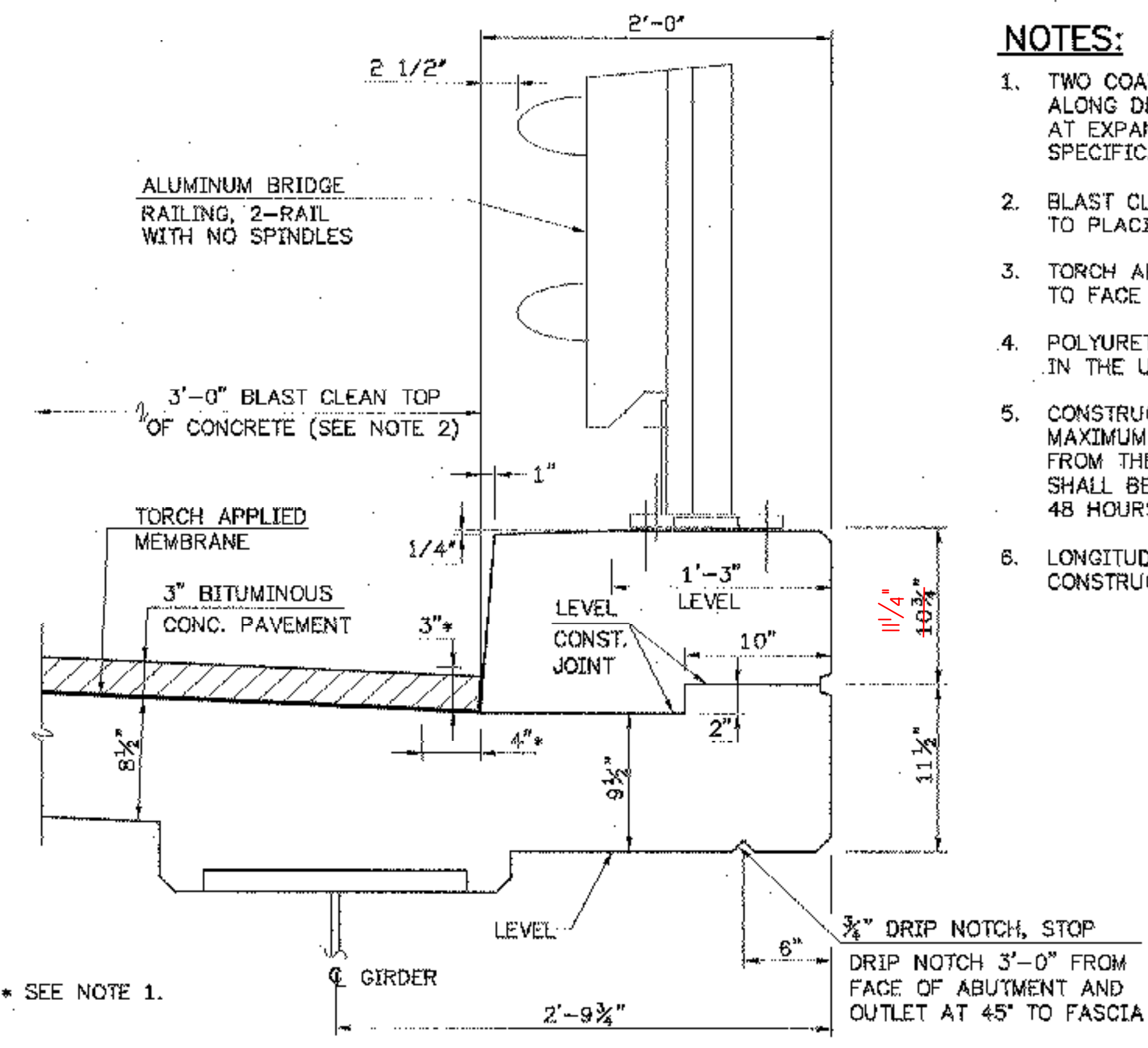
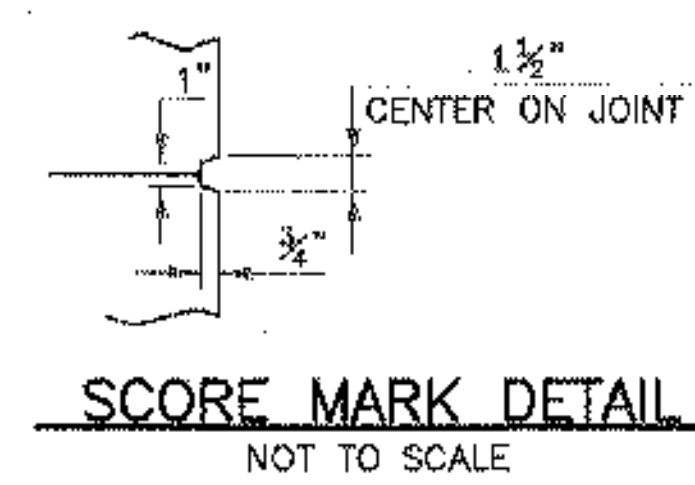


**SIDEWALK CURB SECTION - LEFT FASCIA**  
SCALE: 1 1/2" = 1'-0"

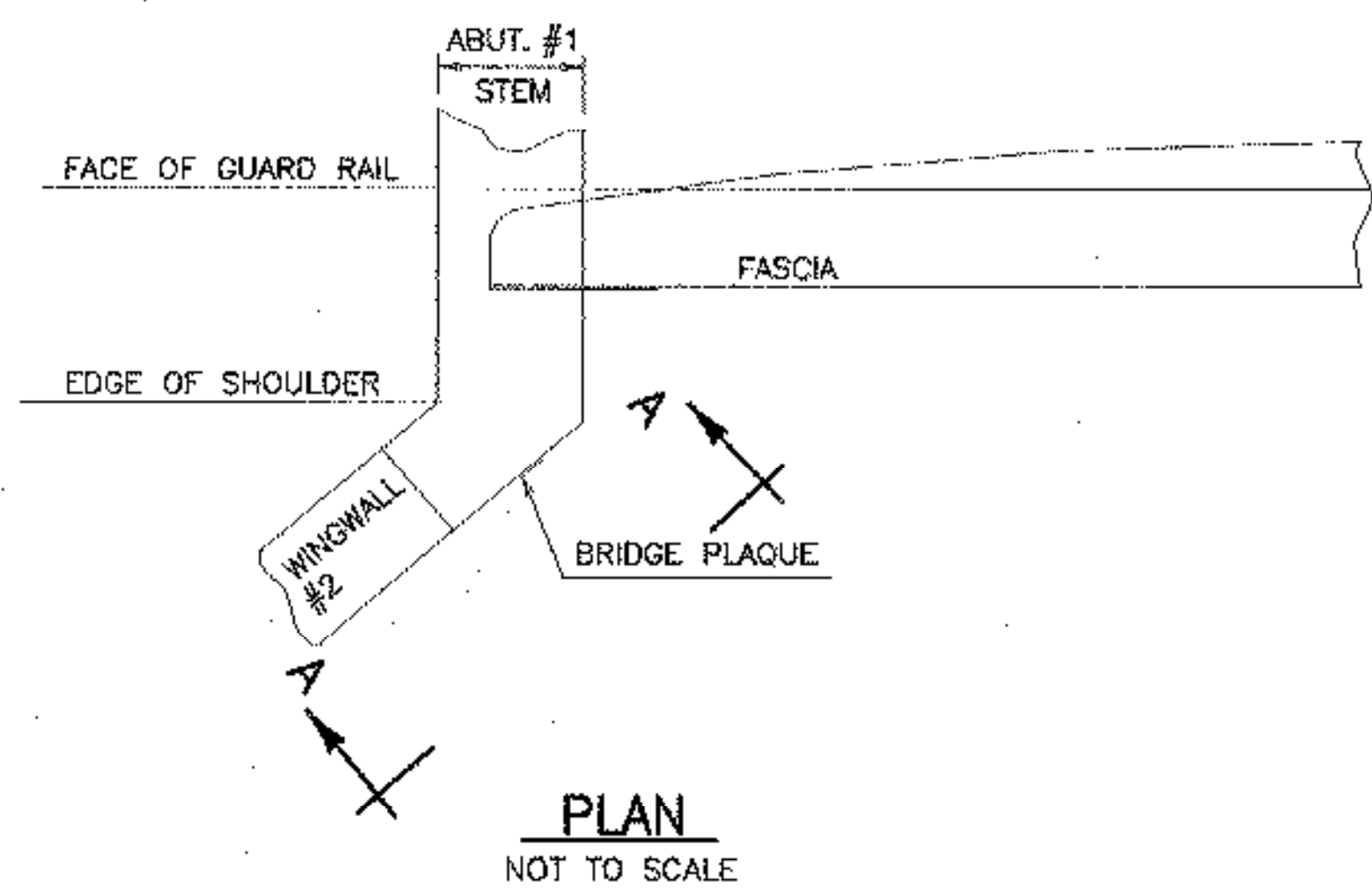


**2'-0\"/>**

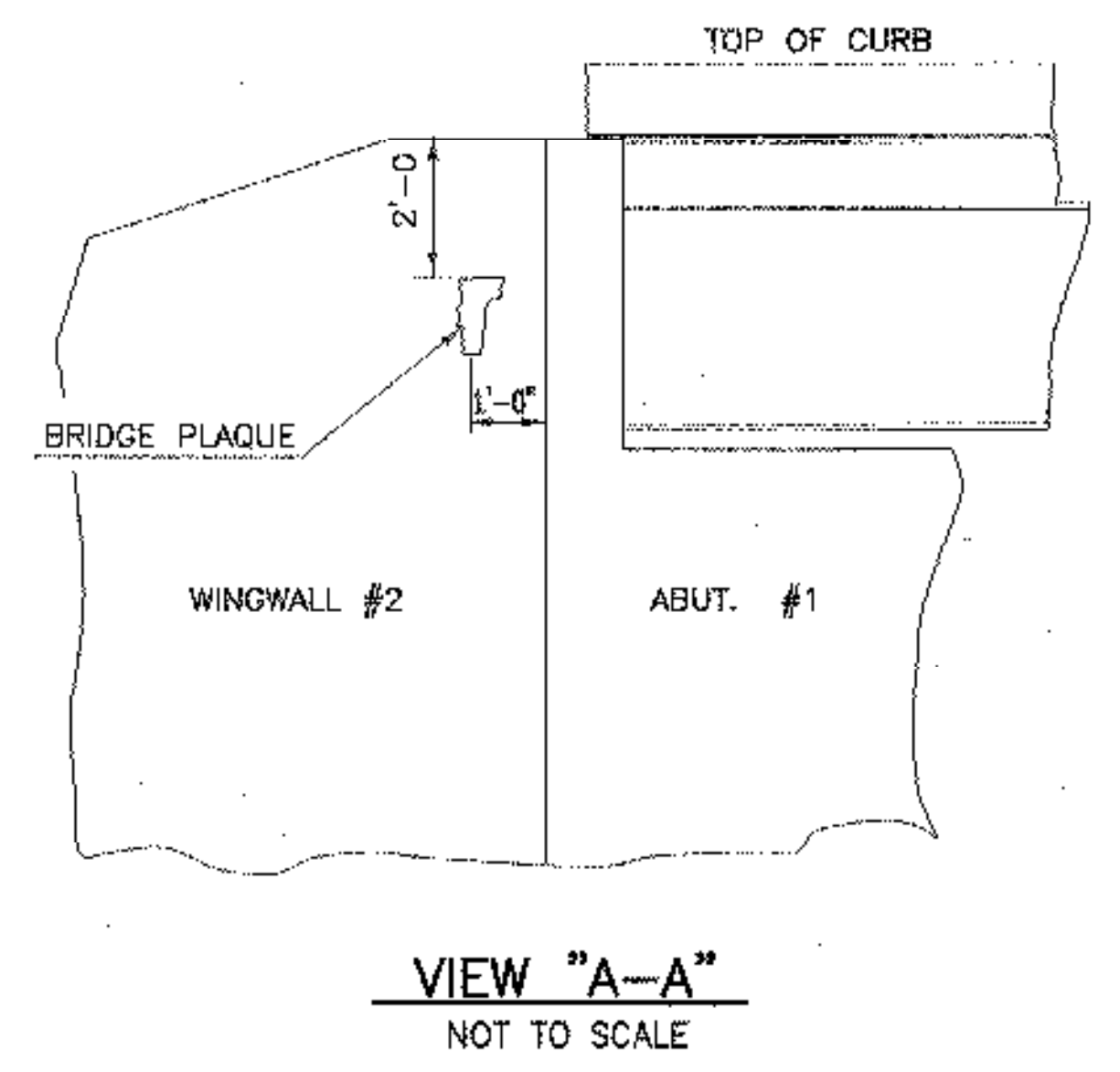
- NOTES:**
1. TWO COATS OF POLYURETHANE MEMBRANE SHALL BE PLACED 4" WIDE ALONG DECK, 3" UP FACE OF CURB AND ALONG CONCRETE SHOULDER AT EXPANSION JOINTS. SEE SPEC. 519.05(B) OF THE 2001 STANDARD SPECIFICATIONS.
  2. BLAST CLEAN 3'-0" FROM FACE OF CURB AND 3" UP CURB FACE PRIOR TO PLACING MEMBRANE.
  3. TORCH APPLIED MEMBRANE SHALL EXTEND FROM FACE OF CURB TO FACE OF CURB.
  4. POLYURETHANE MEMBRANE AND BLAST CLEANING SHALL BE INCLUDED IN THE UNIT PRICE BID FOR TORCH APPLIED MEMBRANE.
  5. CONSTRUCTION JOINTS THROUGH CONCRETE CURBS SHALL BE SPACED MAXIMUM 15'-0" CENTER TO CENTER AND SHALL BE 1'-6" MINIMUM FROM THE CENTER OF THE NEAREST BRIDGE RAIL POST. CONCRETE SHALL BE PLACED IN ALTERNATING SECTIONS WITH A MINIMUM OF 48 HOURS DELAY BETWEEN ADJACENT PLACEMENTS.
  6. LONGITUDINAL REINFORCING SHALL PASS THROUGH CONCRETE CURB CONSTRUCTION JOINTS.



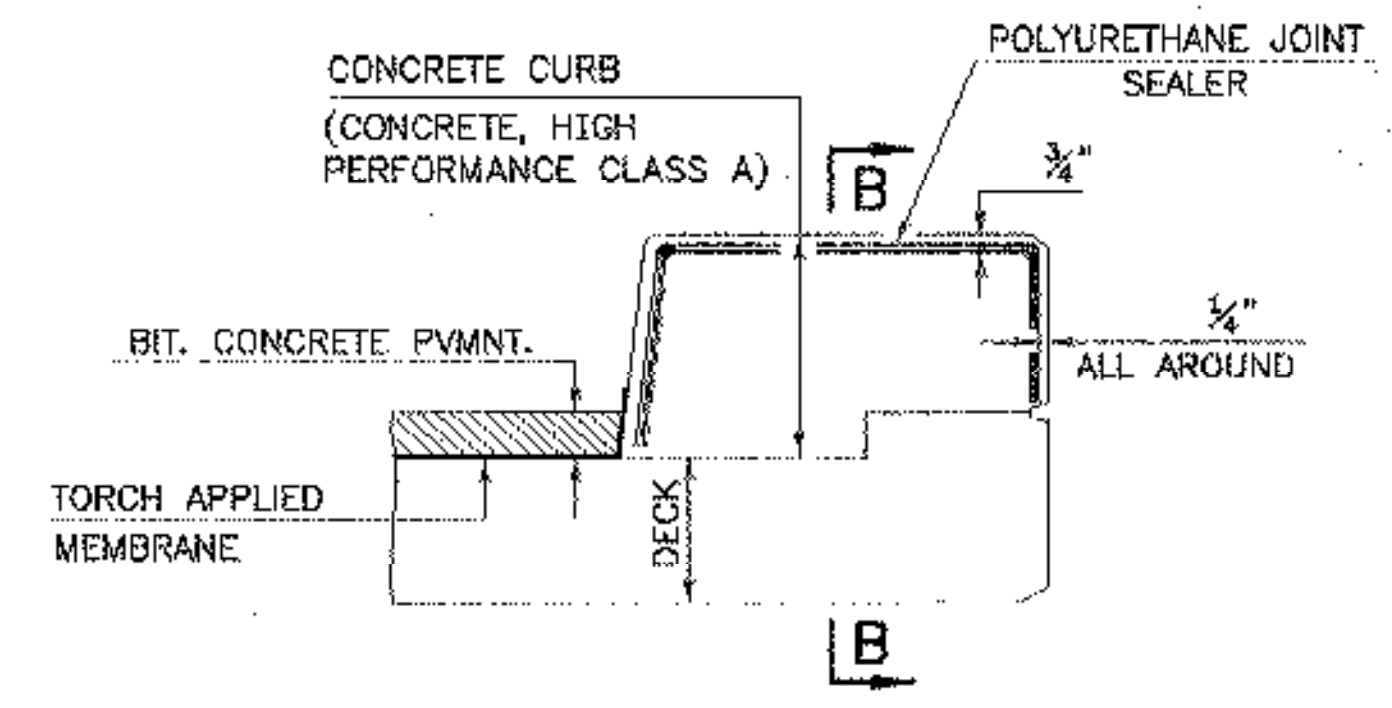
**SCORE MARK DETAIL**  
NOT TO SCALE



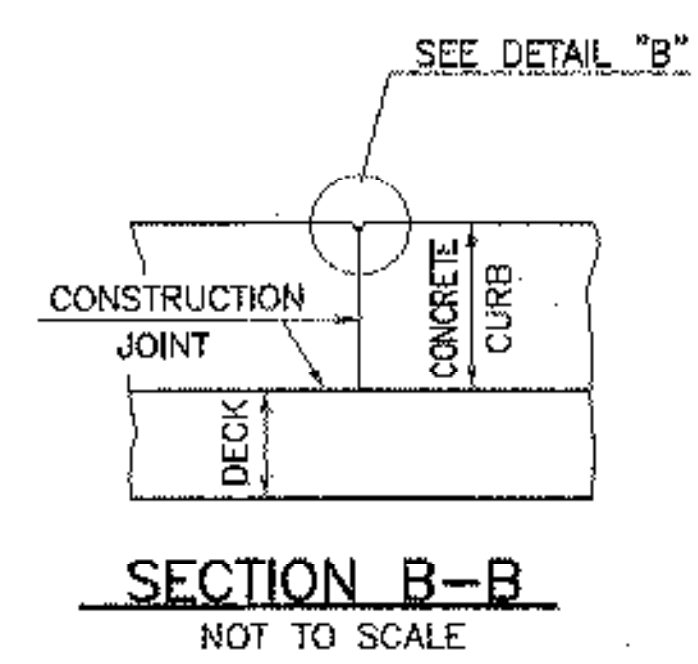
**PLAN**  
NOT TO SCALE



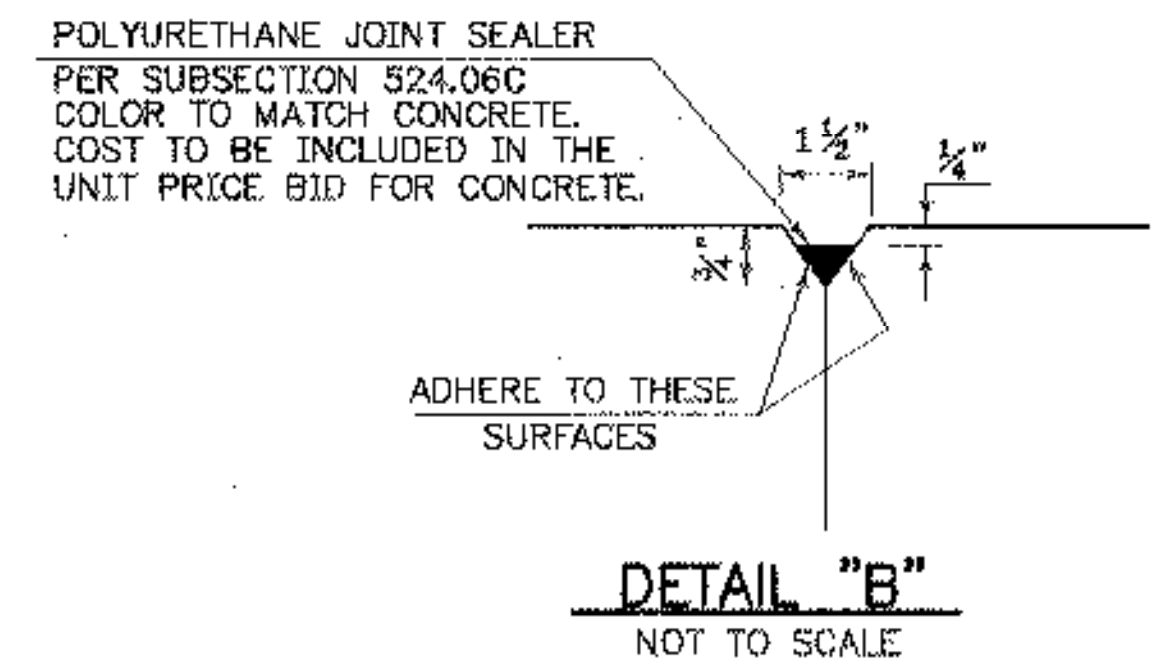
**VIEW "A-A"**  
NOT TO SCALE



**TYPICAL SECTION THROUGH CONCRETE CURB CONSTRUCTION JOINT**  
NOT TO SCALE



**SECTION B-B**  
NOT TO SCALE



**DETAIL "B"**  
NOT TO SCALE

**LOCATE BRIDGE PLAQUE**  
THE BRIDGE PLAQUE WILL BE SUPPLIED BY THE AGENCY OF TRANSPORTATION AND SHALL BE INSTALLED BY THE CONTRACTOR AT ABUTMENT #1 ON THE RIGHT SIDE AS SHOWN OR AS DIRECTED BY THE ENGINEER. (DETAILS ABOVE ARE NOT MEANT TO BE SITE SPECIFIC)

<b>STATE OF VERMONT</b>			
<b>AGENCY OF TRANSPORTATION</b>			
Town Of	ROYALTON	Bridge No.	
Highway No.	VT RTE 14	Log Sta.	
VT RTE 14 OVER FIRST BRANCH OF THE WHITE RIVER			
<b>CURB DETAILS</b>			
Designed By	A.S.	Drawn By	S.E. Newman
Checked By	Date	CLD Project Manager	
CLW/LMM	11/00	LMM	Date 11/00
<b>PROJECT</b>	ROYALTON	<b>PROJECT NO.</b>	BRS 0147(5) S
I.G.C. Info.			
Bridge Sheet No.			Sheet 42 Of 76

