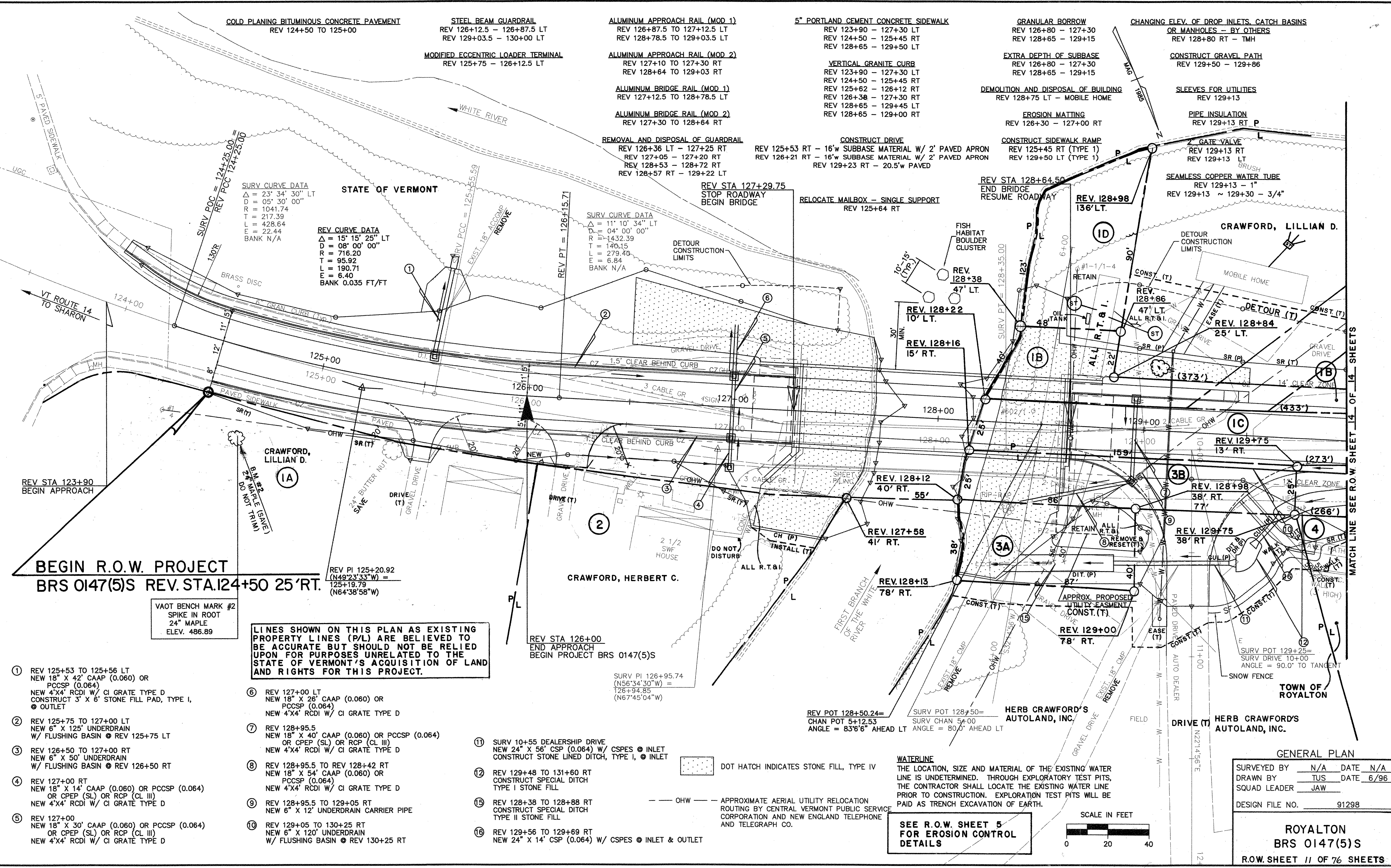


DATE	
BT	
SURVEYED	
PLANNED	
FIELD CHECKED	
BY SP. WAY CHECKED	
NO.	

F:\Proj\90-94\91298 Royalton\Hwy\ACAD\91298-PL 5-26-98 3:58:19 pm EST



- COLD PLANING BITUMINOUS CONCRETE PAVEMENT
REV 124+50 TO 125+00
- STEEL BEAM GUARDRAIL
REV 126+12.5 - 126+87.5 LT
REV 129+03.5 - 130+00 LT
- ALUMINUM APPROACH RAIL (MOD 1)
REV 126+87.5 TO 127+12.5 LT
REV 128+78.5 TO 129+03.5 LT
- 5" PORTLAND CEMENT CONCRETE SIDEWALK
REV 123+90 - 127+30 LT
REV 124+50 - 125+45 RT
REV 128+65 - 129+50 LT
- GRANULAR BORROW
REV 126+80 - 127+30
REV 128+65 - 129+15
- CHANGING ELEV. OF DROP INLETS, CATCH BASINS OR MANHOLES - BY OTHERS
REV 128+80 RT - TMH
- MODIFIED ECCENTRIC LOADER TERMINAL
REV 125+75 - 126+12.5 LT
- ALUMINUM APPROACH RAIL (MOD 2)
REV 127+10 TO 127+30 RT
REV 128+64 TO 129+03 RT
- VERTICAL GRANITE CURB
REV 123+90 - 127+30 LT
REV 124+50 - 125+45 RT
REV 125+62 - 126+12 RT
REV 126+38 - 127+30 RT
REV 128+65 - 129+45 LT
REV 128+65 - 129+00 RT
- EXTRA DEPTH OF SUBBASE
REV 126+80 - 127+30
REV 128+65 - 129+15
- CONSTRUCT GRAVEL PATH
REV 129+50 - 129+86
- ALUMINUM BRIDGE RAIL (MOD 1)
REV 127+12.5 TO 128+78.5 LT
- REMOVAL AND DISPOSAL OF BUILDING
REV 128+75 LT - MOBILE HOME
- SLEEVES FOR UTILITIES
REV 129+13
- ALUMINUM BRIDGE RAIL (MOD 2)
REV 127+30 TO 128+64 RT
- CONSTRUCT DRIVE
REV 125+53 RT - 16'w SUBBASE MATERIAL W/ 2' PAVED APRON
REV 126+21 RT - 16'w SUBBASE MATERIAL W/ 2' PAVED APRON
REV 129+23 RT - 20.5'w PAVED
- CONSTRUCT SIDEWALK RAMP
REV 125+45 RT (TYPE 1)
REV 129+50 LT (TYPE 1)
- EROSION MATTING
REV 126+30 - 127+00 RT
- PIPE INSULATION
REV 129+13 RT P

SURV CURVE DATA
 $\Delta = 23^\circ 34' 30''$ LT
 $D = 05^\circ 30' 00''$
 $R = 1041.74$
 $T = 217.39$
 $L = 428.64$
 $E = 22.44$
 BANK N/A

REV CURVE DATA
 $\Delta = 15^\circ 15' 25''$ LT
 $D = 08^\circ 00' 00''$
 $R = 716.20$
 $T = 95.92$
 $L = 190.71$
 $E = 6.40$
 BANK 0.035 FT/FT

SURV CURVE DATA
 $\Delta = 11^\circ 10' 34''$ LT
 $D = 04^\circ 00' 00''$
 $R = 1432.39$
 $T = 140.15$
 $L = 279.40$
 $E = 6.84$
 BANK N/A

BEGIN R.O.W. PROJECT
BRS 0147(5)S REV. STA. 124+50 25' RT.

VAOT BENCH MARK #2
 SPIKE IN ROOT
 24" MAPLE
 ELEV. 486.89

LINES SHOWN ON THIS PLAN AS EXISTING PROPERTY LINES (P/L) ARE BELIEVED TO BE ACCURATE BUT SHOULD NOT BE RELIED UPON FOR PURPOSES UNRELATED TO THE STATE OF VERMONT'S ACQUISITION OF LAND AND RIGHTS FOR THIS PROJECT.

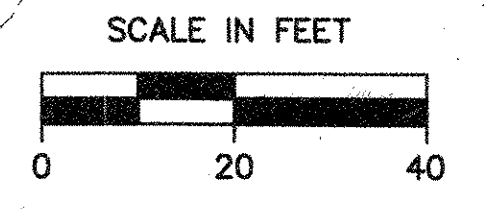
- 1 REV 125+53 TO 125+56 LT
NEW 18" X 42" CAAP (0.060) OR PCCSP (0.064)
NEW 4'X4' RCDI W/ CI GRATE TYPE D
CONSTRUCT 3' X 6' STONE FILL PAD, TYPE I,
OUTLET
- 2 REV 125+75 TO 127+00 LT
NEW 6" X 12" UNDERDRAIN
W/ FLUSHING BASIN @ REV 125+75 LT
- 3 REV 126+50 TO 127+00 RT
NEW 6" X 50' UNDERDRAIN
W/ FLUSHING BASIN @ REV 126+50 RT
- 4 REV 127+00 RT
NEW 18" X 14" CAAP (0.060) OR PCCSP (0.064)
OR CPEP (SL) OR RCP (CL III)
NEW 4'X4' RCDI W/ CI GRATE TYPE D
- 5 REV 127+00
NEW 18" X 30" CAAP (0.060) OR PCCSP (0.064)
OR CPEP (SL) OR RCP (CL III)
NEW 4'X4' RCDI W/ CI GRATE TYPE D
- 6 REV 127+00 LT
NEW 18" X 26" CAAP (0.060) OR PCCSP (0.064)
NEW 4'X4' RCDI W/ CI GRATE TYPE D
- 7 REV 128+95.5
NEW 18" X 40" CAAP (0.060) OR PCCSP (0.064)
OR CPEP (SL) OR RCP (CL III)
NEW 4'X4' RCDI W/ CI GRATE TYPE D
- 8 REV 128+95.5 TO 128+42 RT
NEW 18" X 54" CAAP (0.060) OR PCCSP (0.064)
NEW 4'X4' RCDI W/ CI GRATE TYPE D
- 9 REV 128+95.5 TO 129+05 RT
NEW 6" X 12" UNDERDRAIN CARRIER PIPE
- 10 REV 129+05 TO 130+25 RT
NEW 6" X 120' UNDERDRAIN
W/ FLUSHING BASIN @ REV 130+25 RT
- 11 SURV 10+55 DEALERSHIP DRIVE
NEW 24" X 56" CSP (0.064) W/ CSPES @ INLET
CONSTRUCT STONE LINED DITCH, TYPE I, @ INLET
- 12 REV 129+48 TO 131+60 RT
CONSTRUCT SPECIAL DITCH
TYPE I STONE FILL
- 13 REV 128+38 TO 128+88 RT
CONSTRUCT SPECIAL DITCH
TYPE II STONE FILL
- 14 REV 129+56 TO 129+69 RT
NEW 24" X 14" CSP (0.064) W/ CSPES @ INLET & OUTLET

DOT HATCH INDICATES STONE FILL, TYPE IV

--- OHW --- APPROXIMATE AERIAL UTILITY RELOCATION ROUTING BY CENTRAL VERMONT PUBLIC SERVICE CORPORATION AND NEW ENGLAND TELEPHONE AND TELEGRAPH CO.

WATERLINE
 THE LOCATION, SIZE AND MATERIAL OF THE EXISTING WATER LINE IS UNDETERMINED. THROUGH EXPLORATORY TEST PITS, THE CONTRACTOR SHALL LOCATE THE EXISTING WATER LINE PRIOR TO CONSTRUCTION. EXPLORATION TEST PITS WILL BE PAID AS TRENCH EXCAVATION OF EARTH.

SEE R.O.W. SHEET 5 FOR EROSION CONTROL DETAILS



GENERAL PLAN

SURVEYED BY N/A DATE N/A
 DRAWN BY TUS DATE 6/96
 SQUAD LEADER JAW
 DESIGN FILE NO. 91298

ROYALTON
BRS 0147(5)S
 R.O.W. SHEET 11 OF 76 SHEETS

MATCH LINE SEE R.O.W. SHEET 14 OF 14 SHEETS