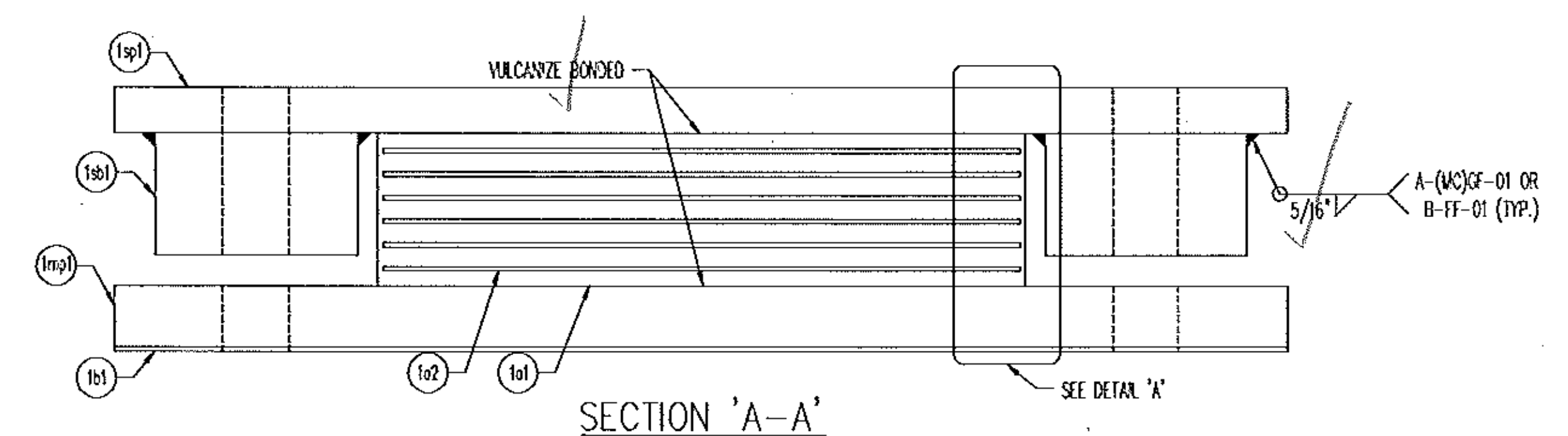
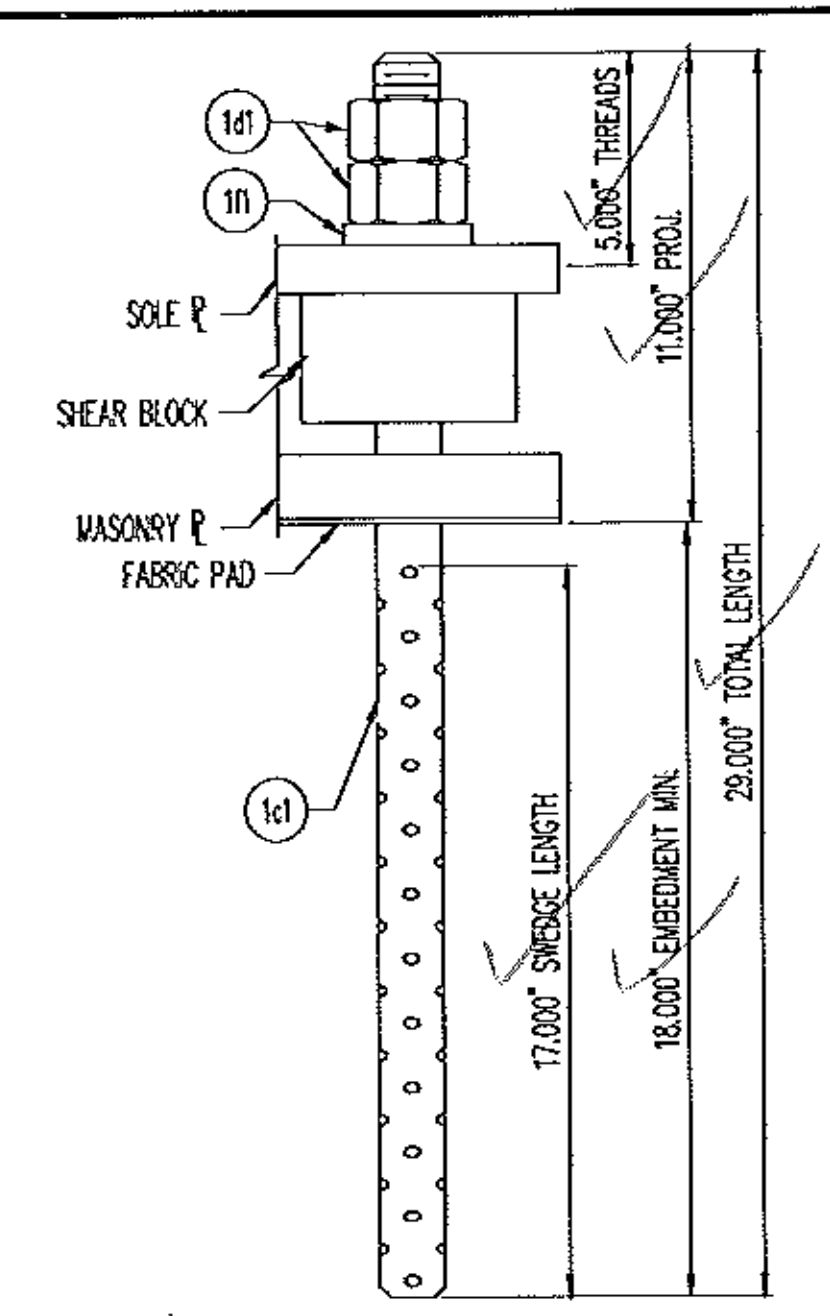


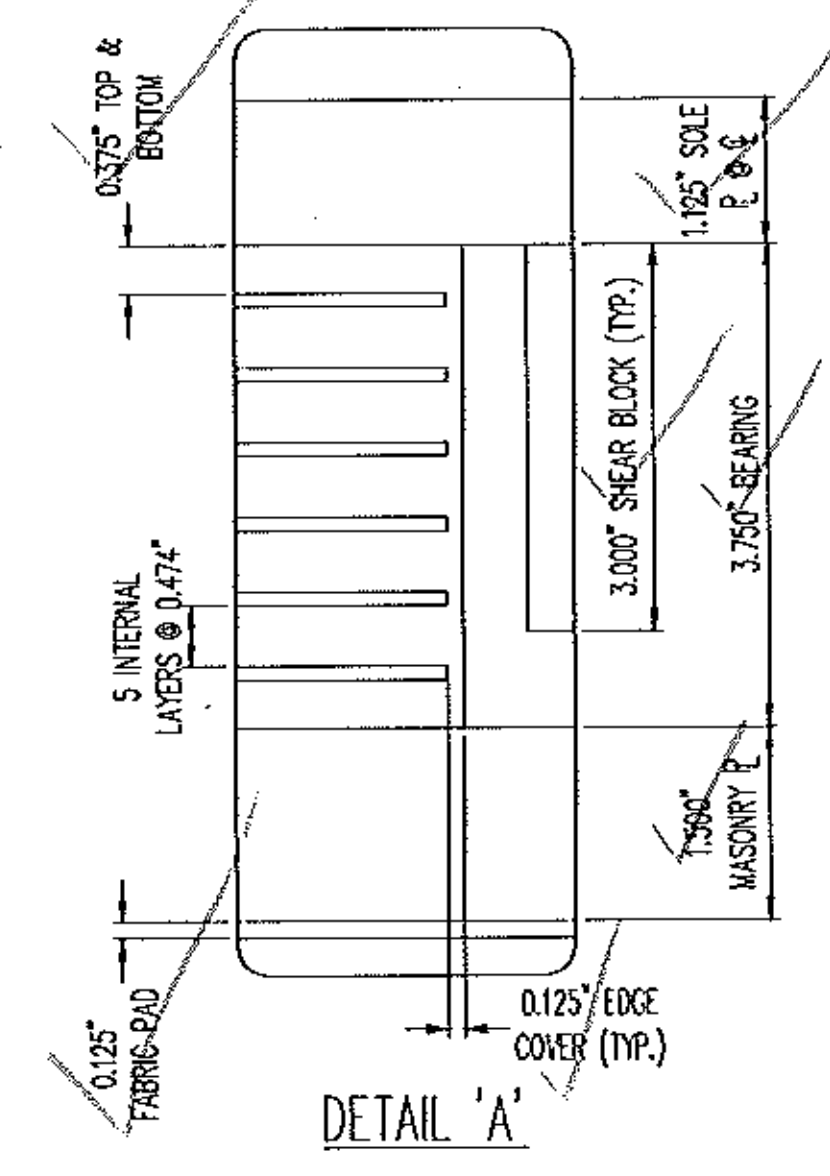
PLAN VIEW
FIXED ELASTOMERIC BEARING
(5) REQ'D @ PIER



SECTION 'A-A'



ANCHOR ROD DETAIL



DETAIL 'A'

WK	QTY	DESCRIPTION	MATERIAL	LENGTH	REMARKS	REV
1A	5	ELASTOMERIC BEARING				--
1e1	5	3.750" X 16.000"	NATURAL RUBBER	12.000"	601/-5 DURO GR. A, 0.13KS AND 0.20KS	--
1e2	30	12 GA. X 15.750"	A1011 GR 35	11.250"	PLAIN	--
1mp1	5	1.500" X 29.000"	A709 GR 50 OR 50W	16.000"	METALIZE, SEAL	--
1sb1	20	3.000" X 5.000"	A709 GR 50 OR 50W	5.000"	METALIZE, SEAL	--
1sp1	5	1.250" X 29.000"	A709 GR 50 OR 50W	16.000"	METALIZE, SEAL	--
1B	5	FABRIC PAD				--
1s1	5	0.125" X 29.000"	AASHTO 18.4.9.1	16.000"	HOLES	--
1C	20	SWEDGE ROD				--
1c1	20	Ø1.500" X 29.000" SWEGDED ROD	A449		5" THREADS, 17" SWEDGE; A153-HDC	--
1D	40	HEAVY HEX NUT				--
1d1	40	Ø1.500" HEX NUT	A563-DH OR A194-2H		A153-HDC	--
1F	20	WASHER PLATE				--
1H	20	0.500" X 3.000"	A-36	3.000"	1.563" HOLE @ CENTER; A123-HDC	--

AP 500K

LOAD TABLE	
LIVE LOAD (KIPS)	81.7
DESIGN LOAD (KIPS)	94.2

RECEIVED
CR'D BY SSS OK'D BY mem
OCT 09 2009
RESUBMIT _____ APPROVED ✓
BY _____ DATE 11/4/2009

SEE SHT. GHI FOR GENERAL NOTES & COATING LIMITS.

THE D.S. BROWN COMPANY
300 E. CHERRY STREET
NORTH BALTIMORE, OHIO 45872
419.257.3551
FAX: 419.257.0332
WWW.DSBROWN.COM

REV.	DESCRIPTION	DATE	DET.	CHK.
	LOCATION — BRIDGE PROJECT TOWNS OF MORETOWN-WIDDLESEX			
	BRIDGE —	27445-1104-1	5	OF 5
	PROJECT — BRS 0284(14)			
	P.O. NO. — C-2326			
	DESIGNER — VT DOT			
	CUSTOMER — WINTERSET INC.			

own copy