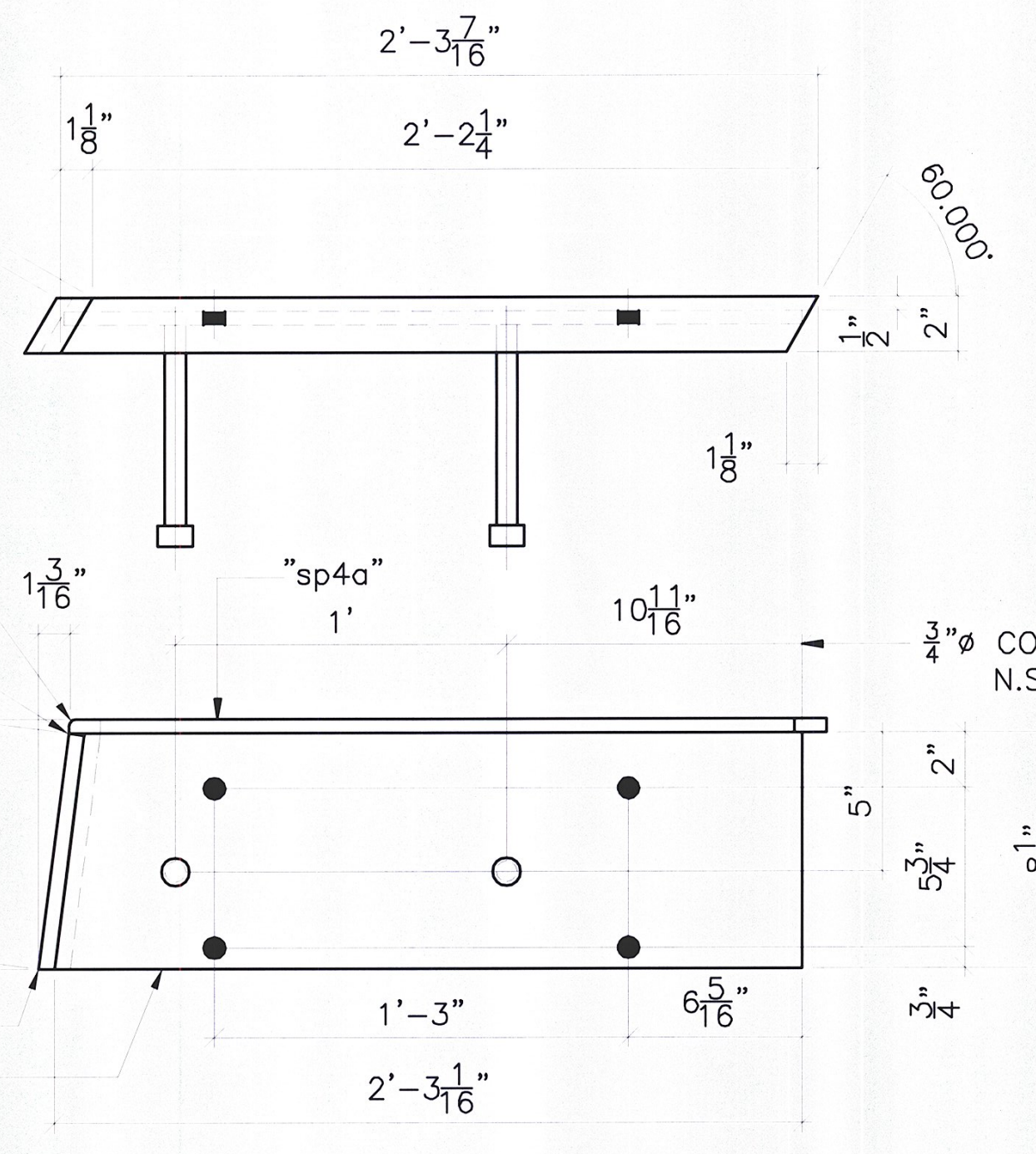


2-TOP PLATE ASS'Y, MARK "TP2"

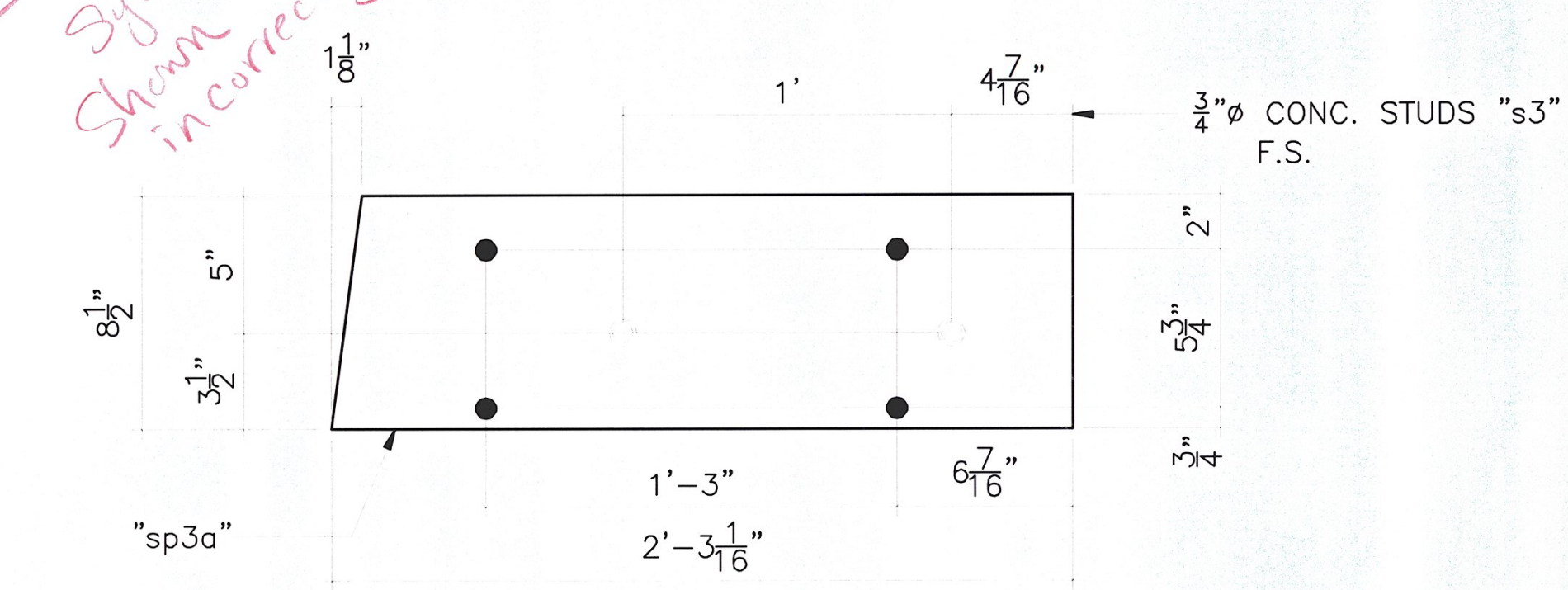
DRILL & CNTRSK FOR 3/4" F.H. SCREWS



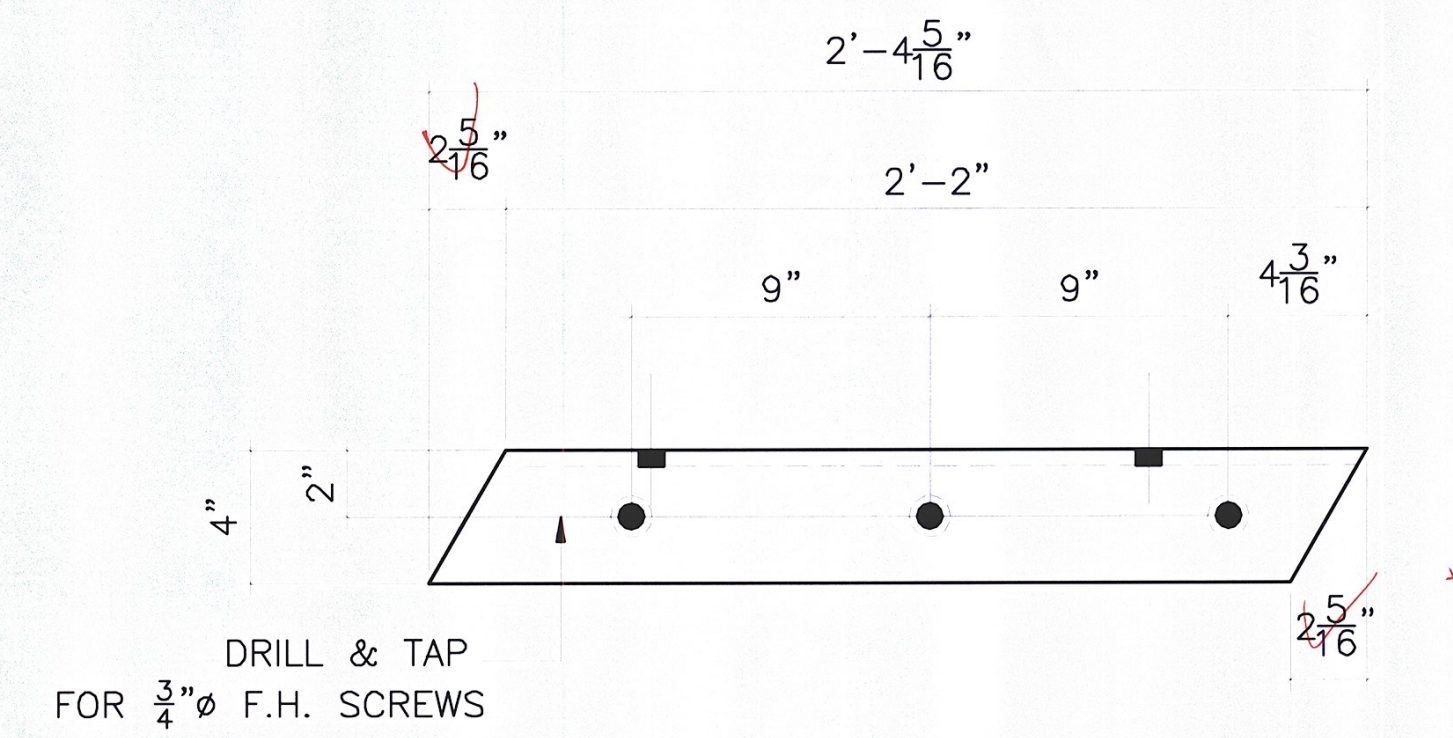
2-SIDE PLATE ASS'Y, MARK "SP4"

Weld Symbol shown incorrectly

Weld Symbol shown correctly

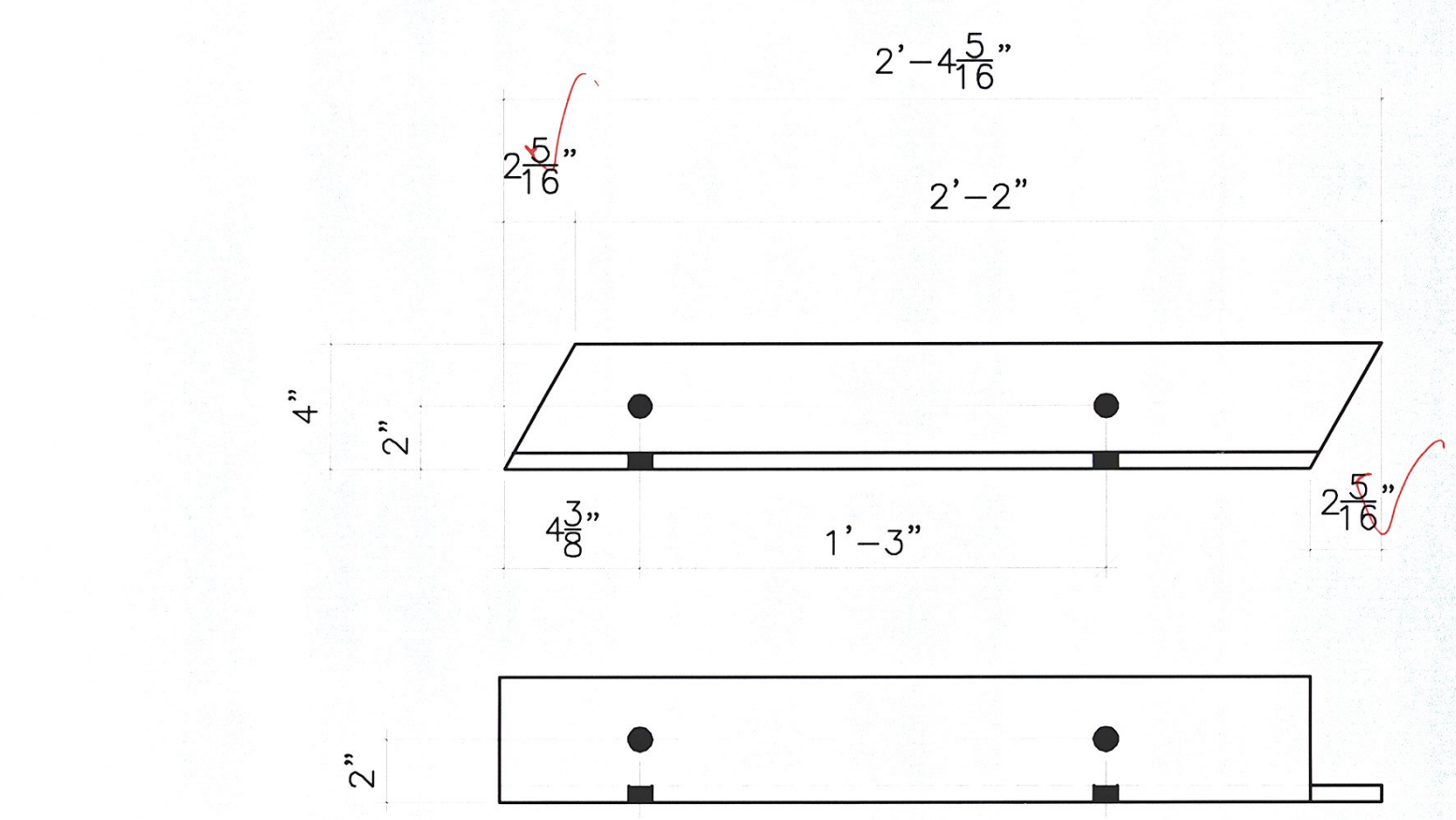


2-SIDE PLATE ASS'Y, MARK "SP3"

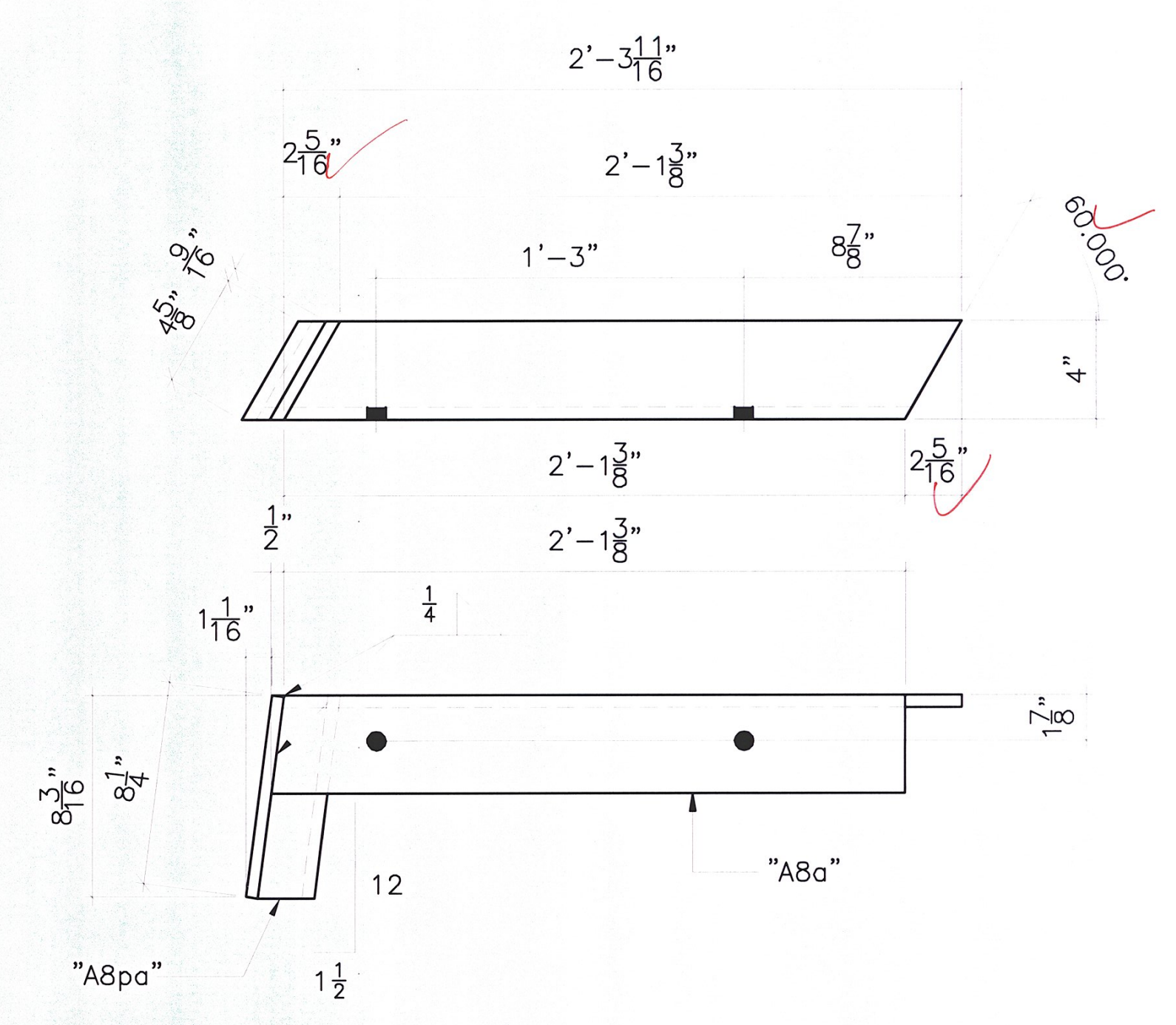


2-4X4X1/2, MARK "A6"

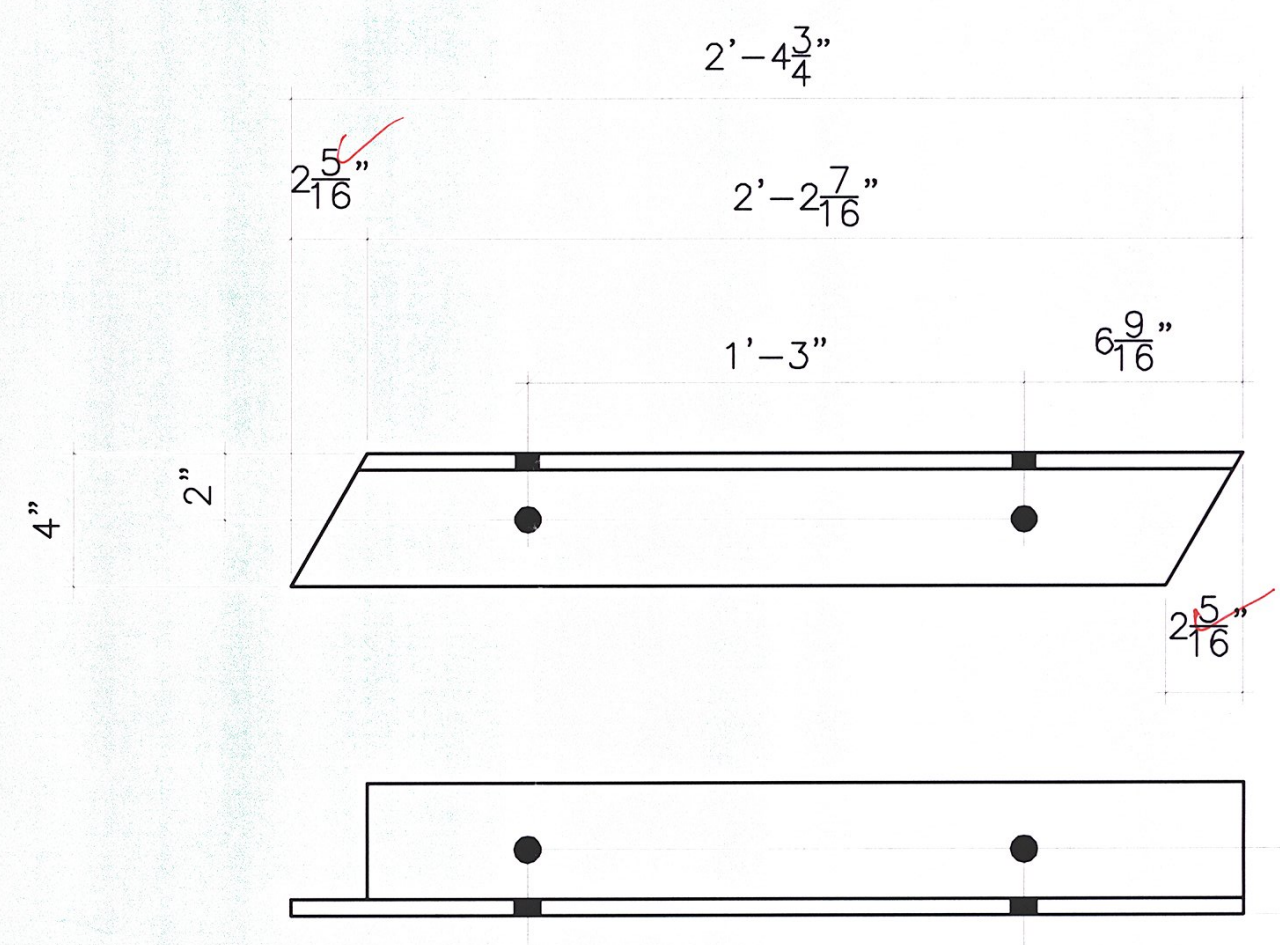
DRILL & TAP FOR 3/4" F.H. SCREWS



2-4X4X1/2, MARK "A7"



2-4X4X1/2 ASS'Y MARK "A8"



2-4X4X1/2, MARK "A5"

RECEIVED  
 OK BY SSS ONCD BY Mem  
 JAN 20 2010  
 RESUBMIT APPROVED As NOTED  
 BY DATE 2/5/2010

ERECTION BOLTS W/H.H.N.			WASHERS		FINISH	
QUAN.	SIZE	LENGTH	TYPE	FLAT	BEV.	GALV. AASHTO M232
FINISH MATERIAL			HOT DIPPED GALVANIZED			
HOLES			AASHTO M270 GR. 36			
ELECTRODES			13/16" U.O.N.			
WELDS			PER W.P.S.			
SURFACE PREP			AS NOTED			
			SSPC-SP8			
FOR APPROVAL ONLY						
REVISIONS						
NO. DATE DESCRIPTION BY						
NO. DATE DESCRIPTION BY						

**ARC**  
 ENTERPRISES, INC.

**ADVANCED RESOURCES & CONST. ENTERPRISES, INCORPORATED**  
 P.O. BOX 120 KINGFIELD, ME. 04947  
 PHONE: (207) 265-2846 - FAX: (207) 265-4054

DRAFTER JAC	EXPANSION JOINT DETAILS	PROJECT NO. BRS 0284(14)
DATE 1/8/10	VERMONT AGENCY OF TRANSPORTATION, TOWNS OF MORETOWN-MIDDLESEX, U.S. RTE. 2 MAJOR COLL.	DWG. NO. 4
CHECKED MTD	G.C.	
JOB #09-200	WINTERSSET, INC.	

WORK THIS DWG. WITH DWG. 3