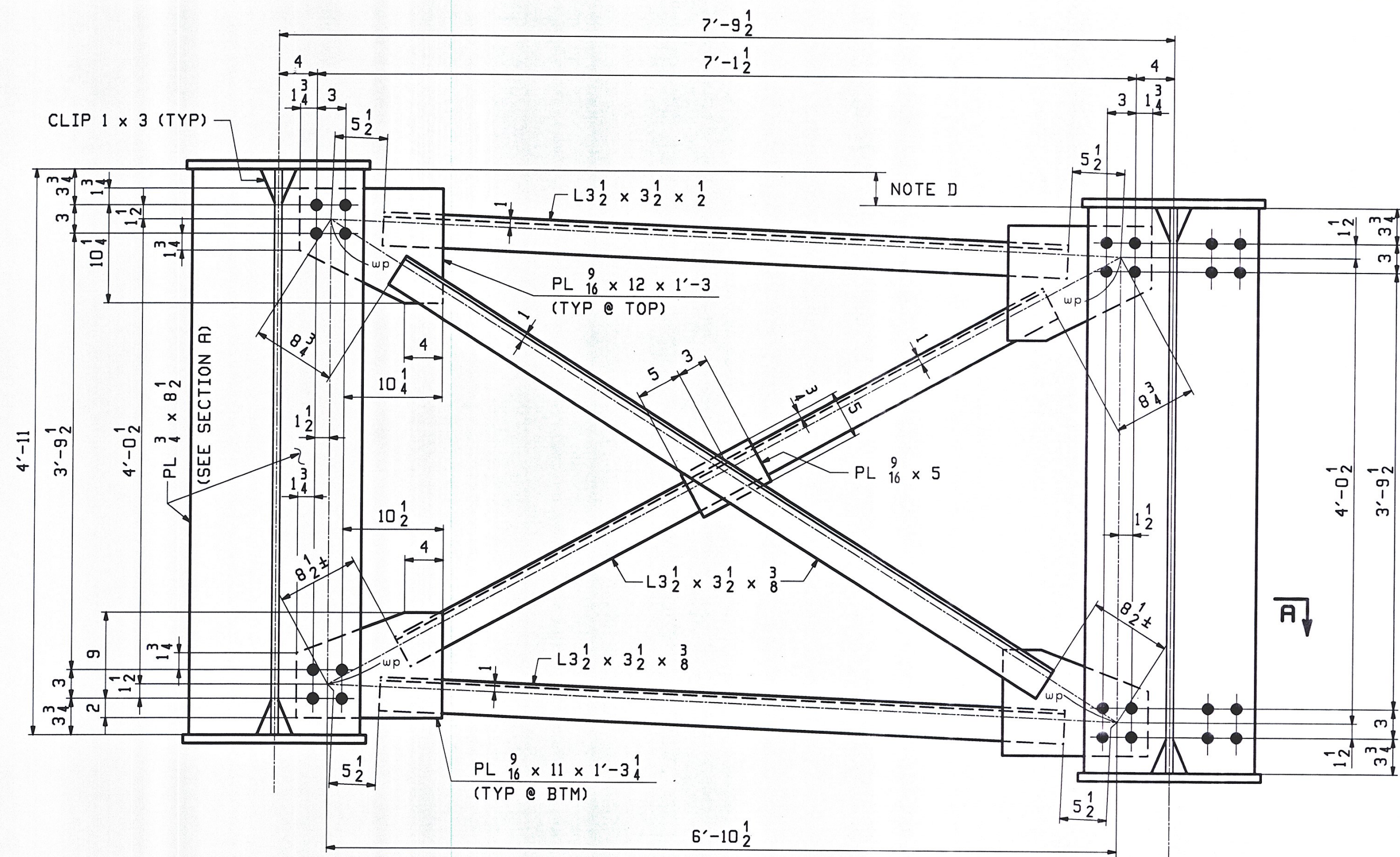
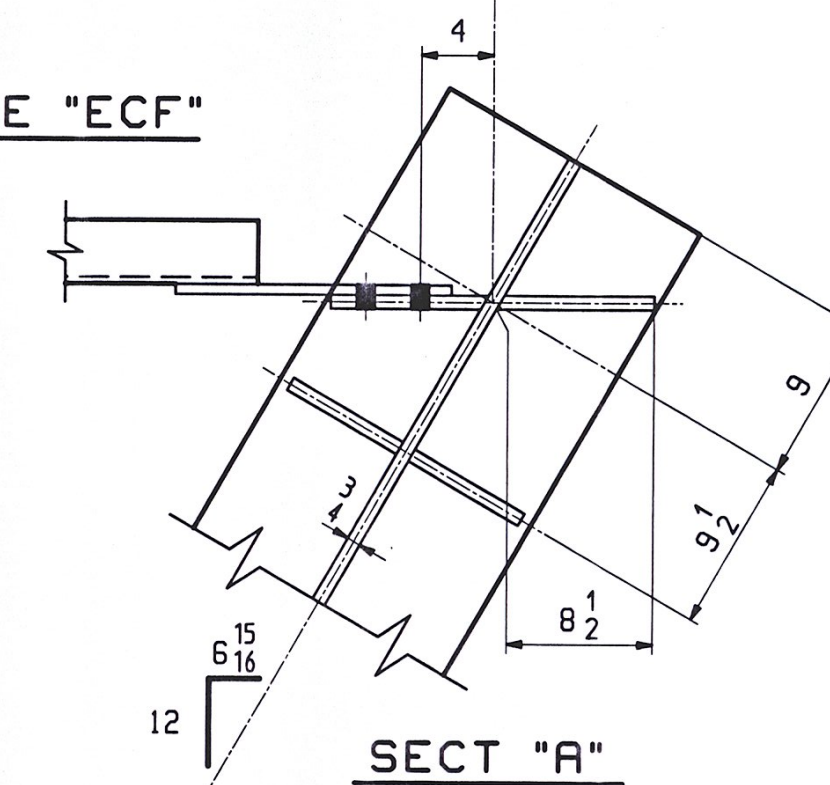


TYPE "CF1" INT CROSSFRAME @ DEPTH RANGE OF 4'-11 TO 5'-1 <sup>13</sup>/<sub>16</sub>  
(LOOKING UP STATION)



TYPICAL END CROSSFRAME - TYPE "ECF"  
(LOOKING TOWARD BACKWALL)



SECT "A"

NOTE D:  
DROP VARIES IN MAGNITUDE AND DIRECTION.  
SEE "WS" SHEETS.

NOTES:  
MATERIAL: AASHTO M270-S0W  
BOLTS: 7/8" HSB - A325  
HOLES: 15/16"

**\*\* NOTE \*\***  
THE PURPOSE OF THIS DRAWING IS TO COORDINATE GEOMETRIC CONTROL INFORMATION AND CONNECTION SPACING. THIS DWG IS SUBMITTED FOR INFORMATION ONLY & IS NOT INTENDED FOR SHOP FABRICATION. DETAIL DWGS WILL SHOW ALL WELDING AND DIMENSIONS REQ'D FOR FABRICATION.

SCALE 1.25" = 1.0'

RECEIVED  
OK'D BY SSS OK'D BY MEM  
NOV 9 2009  
BY [Signature] 11/5/09

10/19	REVISED PER APPROVAL	WJF	PCP	08/05/2009	
D				07/2009	
REV. DATE	REMARKS	DWN	CHK	APVL	SHOP
MATERIAL: M270-S0W		SURFACE PREP. & PAINT: AS NOTED		Holes: AS NOTED	
		SHOP BOLTS: AS NOTED			
DESCRIPTION: CROSSFRAME LAYOUTS					
CASCO BAY STEEL STRUCTURES, INC. 75 SPRING HILL ROAD SACO, MAINE 04072 PHONE (207) 282-7360 FAX. (207) 282-1179					
STRUCTURE: US RTE 2 OVER WINOOSKI RIVER WASHINGTON COUNTY, VT		DATE:	08/05		
		WL/CRK			
		CHKD:	RLA 08/08		
LOCATION: TOWNS OF MORETOWN ~ MIDDLESEX, VT		JOB NO.	421-1		
PROJ NO. BRS 0284(14)		DWG NO.	TD1		
CUSTOMER: WINTERSSET INC.		REV.	A		