

GENERAL NOTES

CONSTRUCTION SPECIFICATIONS

- 1) ALL MATERIAL AND WORKMANSHIP TO BE IN ACCORDANCE WITH THE STATE OF VERMONT AGENCY OF TRANSPORTATION STANDARD SPECIFICATIONS FOR CONSTRUCTION DATED 2006 WITH LATEST REVISIONS AND THE AASHTO LRFD BRIDGE CONSTRUCTION SPECIFICATIONS FOR HIGHWAY BRIDGES DATED 2006 AND ITS LATEST REVISIONS.

MATERIAL SPECIFICATIONS

- 1) UNLESS OTHERWISE NOTED, ALL STEEL TO BE UNPAINTED AASHTO M270 (ASTM A709) GRADE 50W.
- 2) MATERIAL NOTED "CVN" OR "H2-3" ON DETAIL DRAWINGS SHALL BE CHARPY V-NOTCH TESTED IN ACCORDANCE WITH THE REQUIREMENTS OF VERMONT STANDARD SPECIFICATIONS SECTION 714.
- 3) HIGH STRENGTH BOLTS: ASTM A325 7/8" DIAMETER, TYPE 3, IN 15/16" DIAMETER HOLES, UNLESS NOTED OTHERWISE. NUTS SHALL BE A563 (TYPE 3) GRADE C3. IN PAINTED AREAS, USE ASTM TYPE 1 (GALV PER AASHTO M232) BOLTS, NUTS AND WASHERS.
BOLTS & NUTS SHALL BE ROTATIONAL CAPACITY TESTED. DO NOT MIX NUTS & BOLTS FROM DIFFERENT CONTAINERS UNLESS ALL BOLTS & NUTS HAVE THE SAME LOT NUMBER.

FABRICATION

- 1) ALL HOLES SHALL BE PUNCHED OR DRILLED FULL SIZE (UN).

WELDING

- 1) THE CONFIGURATION OF THE WELD JOINTS AND ALL WELDING PROCEDURES SHALL BE IN ACCORDANCE WITH AASHTO/AWS D1.5-02 BRIDGE WELDING CODE AND IN ADDITION TO SPECIFICATIONS SHOWN ABOVE. ALL WELDING WILL BE DETAILED TO PRE-QUALIFIED JOINTS, UNLESS PROHIBITED BY THE DESIGNER.
- 2) WELDING OF MAIN LOAD CARRYING MEMBERS AND ATTACHMENTS SHALL BE PERFORMED USING THE AUTOMATIC SUBMERGED ARC & SHIELDED METAL ARC PROCESSES. ALL WELDS ARE CONTINUOUS U.N.
- 3) NON DESTRUCTIVE TESTING OF WELDS SHALL BE IN ACCORDANCE WITH THE REFERENCED SPECIFICATION.
- 4) SEE DETAIL "WS1" & "WS2" ON THIS DRAWING FOR WELD TERMINATION DETAIL.

FIELD CONNECTIONS

- 1) ALL FIELD CONNECTIONS SHALL BE MADE WITH 7/8" DIAMETER HIGH STRENGTH A-325 BOLTS (UN), INSTALLED PER SECTION 506.19(c). SEE DWG E1 FOR FIELD BOLT SIZES.
- 2) BOLTS SHALL HAVE HEAVY HEX NUT, HEAVY HEX HEAD, AND AT LEAST ONE FLAT WASHER EACH. WASHER TO BE PLACED UNDER TURNED ELEMENT.
- 3) PIECE MARKS WILL BE LOCATED AS SHOWN ON ERECTION DRAWINGS.

CLEANING

- 1) ALL STEEL SHALL BE BLAST CLEANED IN ACCORDANCE WITH SSPC SP-10.

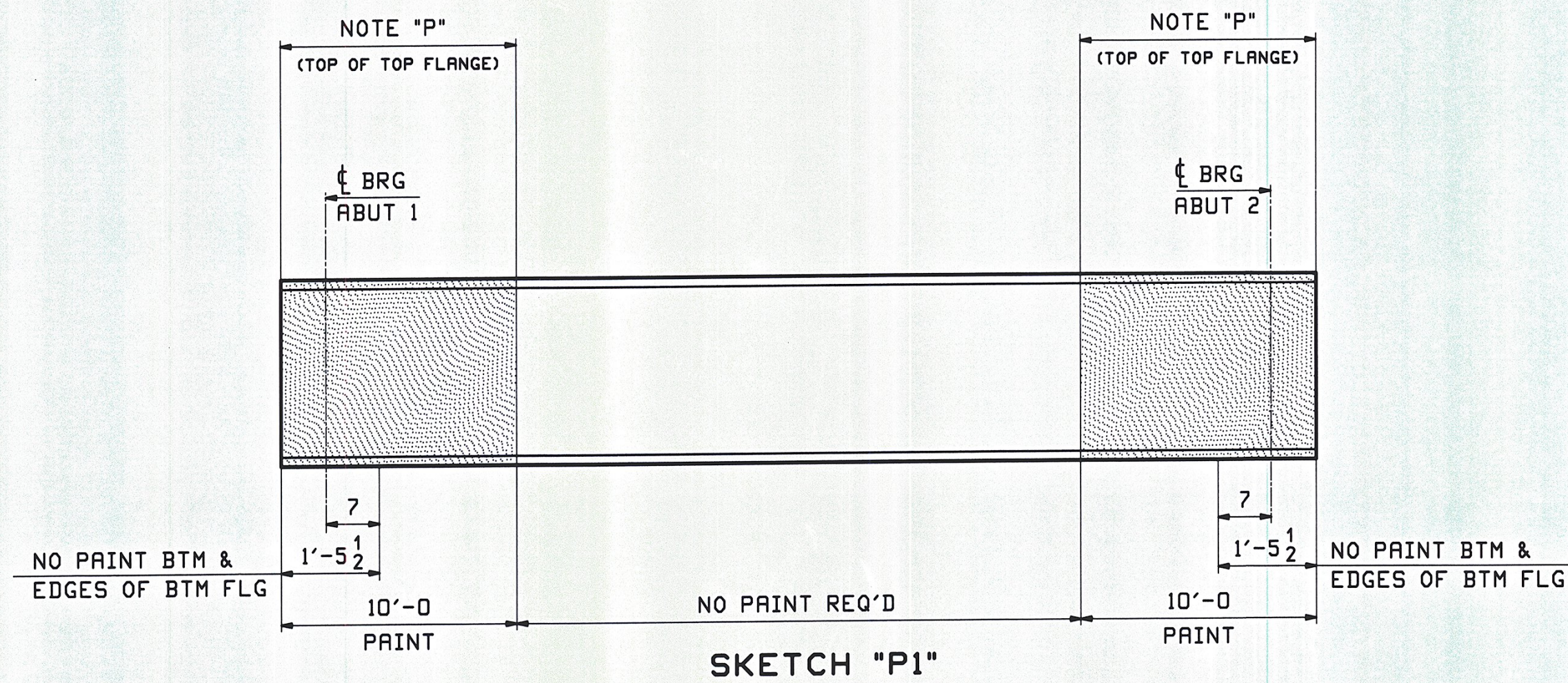
PAINTING

- 1) THE GIRDER ENDS & ABUTMENT CROSSFRAMES WITHIN 10'-0" OF THE ENDS OF STEEL AT ABUT 1 & ABUT 2 SHALL BE PAINTED, EXCEPT AS NOTED (SEE SKETCH "P1").
- 2) THE PAINT SYSTEM AND ITS APPLICATION SHALL CONFORM TO SECTION 513 OF THE STANDARD SPECIFICATIONS.

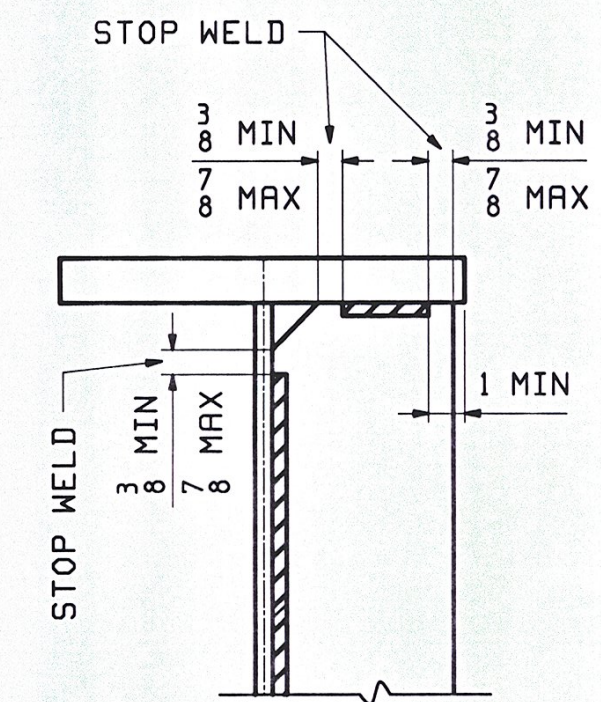
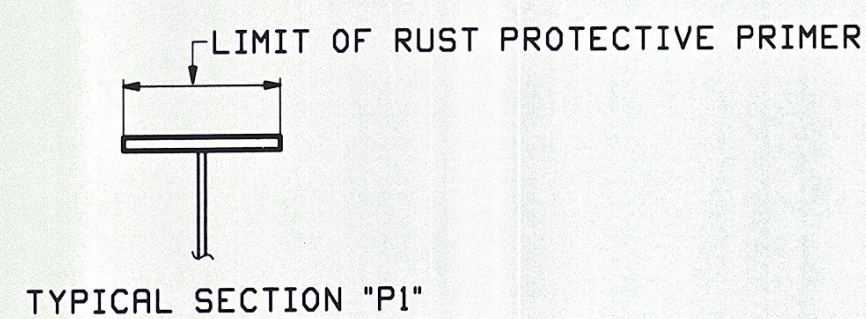
THE PAINT SYSTEM SHALL BE AS FOLLOWS:
PRIMER: CARBOLINE 859 ORGANIC ZINC RICH PRIMER ~ 3.0 - 5.0 MILS DFT.
INTERMEDIATE: CARBOLINE 888 EPOXY ~ 4.0 - 6.0 MILS DFT.
TOPCOAT: CARBOLINE 133 HB ALIPHATIC POLYURETHANE ~ 2.0 - 4.0 MILS DFT.

TOP COAT COLOR: DARK BROWN FED COLOR #20059

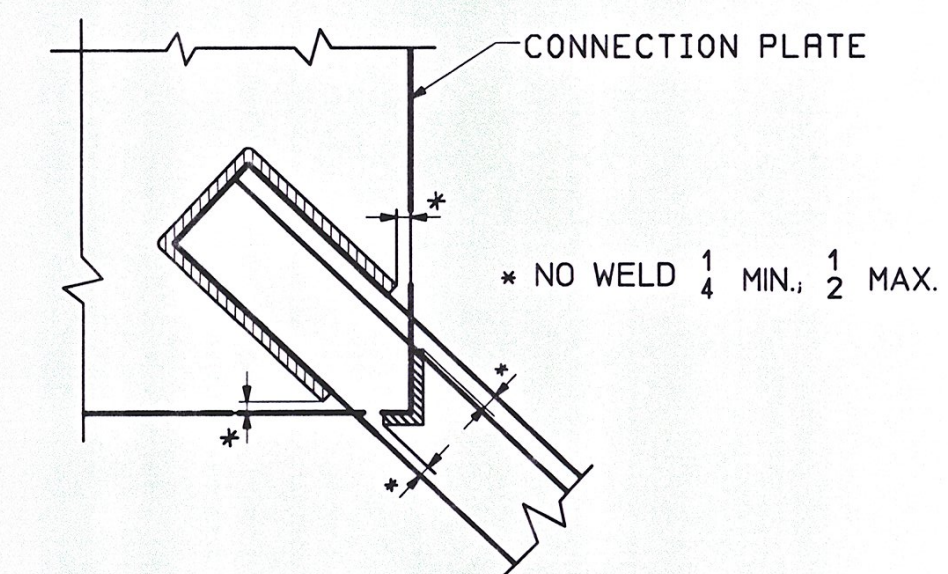
- 3) PRIME COAT ONLY WITHIN 3" OF ALL HOLES WITHIN THE PAINTED AREA.



NOTE "P"
PAINT WITH A LIGHT RUST-PREVENTATIVE COAT OF PRIMER (SEE SECTION "P1")



DETAIL "WS1"
STIFFENER WELD TERMINATION



DETAIL "WS2"
CROSSFRAME WELD TERMINATION

NOTE TO ENGINEER:
THESE NOTES ARE NOT INTENDED TO BE ALL INCLUSIVE AND COMPLIANCE WITH RELEVANT SPECIFICATIONS REMAIN UNCHANGED.

REV.	DATE	REMARKS	DWN	CHK	APVL	SHOP
0						
MATERIAL:		SURFACE PREP. & PAINT:	HOLES:		SHOP BOLTS:	
M270-50W		AS NOTED	AS NOTED		AS NOTED	
DESCRIPTION: GENERAL NOTES						
CASCO BAY STEEL STRUCTURES, INC. 75 SPRING HILL ROAD SACO, MAINE 04072 PHONE (207) 282-7360 FAX. (207) 282-1179						
STRUCTURE: US RTE 2 OVER WINOOSKI RIVER WASHINGTON COUNTY, VT				DRAWN:	DATE:	
				CRK	08/05	
				CHKD:	DATE:	
				RLA	08/10	
LOCATION: TOWNS OF MORETOWN ~ MIDDLESEX, VT				JOB NO.	DWG NO.	
PROJ NO. BRS 0284(14)				421-1	GN1	
CUSTOMER: WINTERSET INC.				REV.	△	

RECEIVED
CKD BY SSS OKD BY mjm
NOV 05 2009
BY DATE 11/5/09