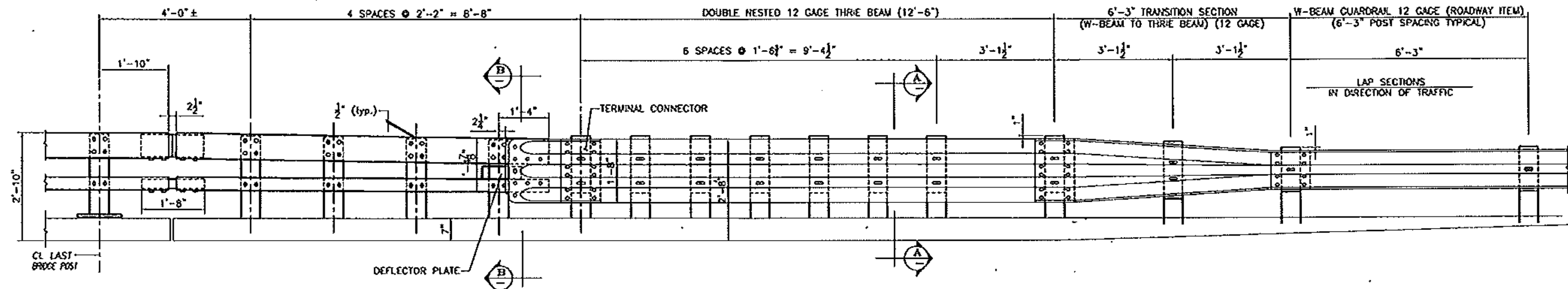


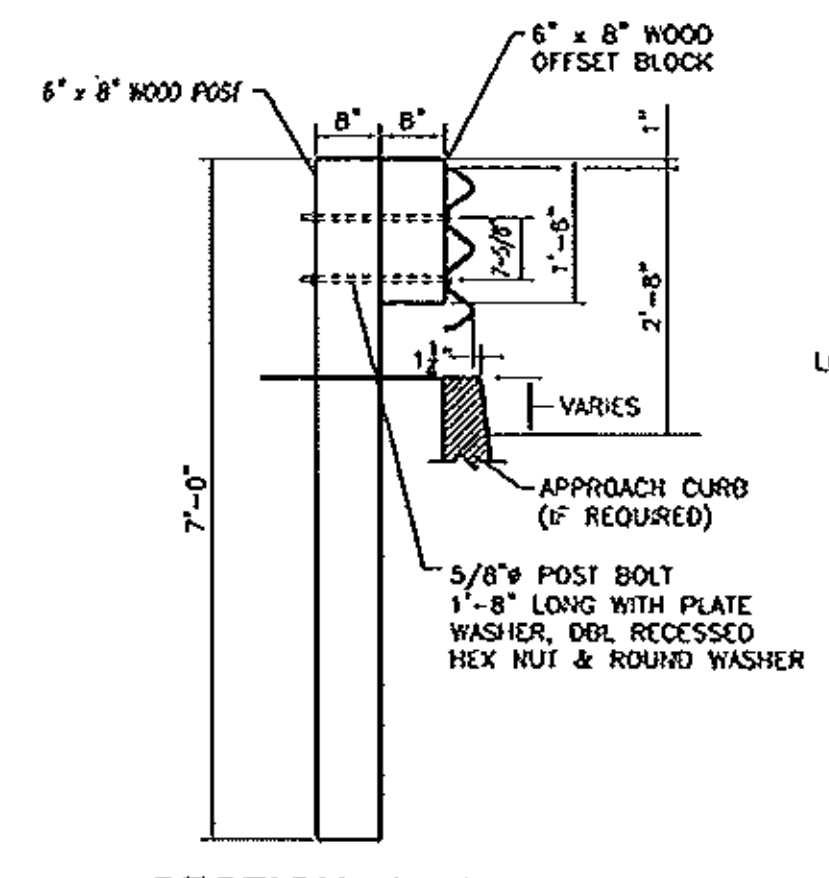
PLAN



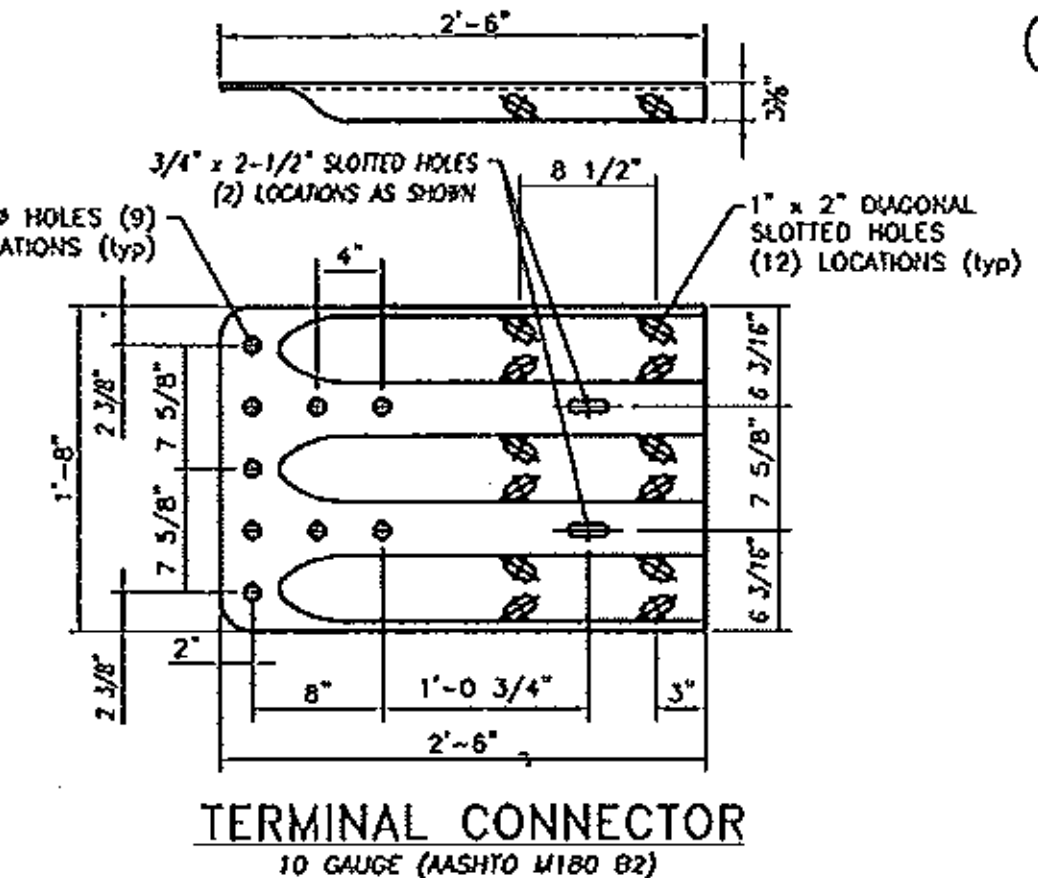
APPROACH RAIL ELEVATION  
(TOTAL LIMIT ITEM 565.22 = 118.5 LF)

BILL OF MATERIAL (4 APPROACHES)				
MK.	Qty.	Description	Size/Shape	Material
M10	2	UPPER APPROACH RAIL	TS 8x4x0.313	A500 Gr. B
	2	LOWER APPROACH RAIL	TS 4x4x0.25	A500 Gr. B
M11	2	SHOP CURVED UPPER RAIL	TS 8x4x0.313	A500 Gr. B
	2	SHOP CURVED LOWER RAIL	TS 4x4x0.25	A500 Gr. B
M12	2	SHOP CURVED UPPER RAIL	TS 8x4x0.313	A500 Gr. B
	2	SHOP CURVED LOWER RAIL	TS 4x4x0.25	A500 Gr. B
SP	16	STEEL POST	W6 x 25	A372 Gr. 50
WP1	32	WOOD POST	6" x 8"	TANBER
WP2	4	WOOD POST	6" x 8"	TANBER
WP3	4	WOOD POST	6" x 8"	TANBER
WB1	32	WOOD BLOCK	6" x 8" x 1'-8"	TANBER
WB2	4	WOOD BLOCK	6" x 8" x 1'-8"	TANBER
WB3	4	WOOD BLOCK	6" x 8" x 1'-2"	TANBER
	4	SPUCE TUBE FOR TS 8x4x0.313	TUBE IS 7x6x0.313	A500 Gr. B
	8	WELDED LOCK NUTS	0.625"	A563 Gr. A
	4	ANGLED SPUCE TUBE FOR TS 4x4x0.250	TUBE IS 3x2x0.250	A500 Gr. B
	8	WELDED LOCK NUTS	0.625"	A563 Gr. A
	4	TERMINAL CONNECTOR	10 Ga.	M180
	4	CONNECTION PLATE	0.125" x 1'-8"	A709 Gr. 36
	4	END CAP FOR TS 8x4 RAIL TUBE	PLATE 0.188" x 4"	A709 Gr. 36
	16	PLATE	0.125" x 1'	A709 Gr. 36
	4	END CAP FOR TS 4x4 RAIL TUBE	PLATE 0.188" x 4"	A709 Gr. 36
	8	PLATE	0.125" x 1'	A709 Gr. 36
	2	DEFLECTOR PLATE (LEFT)	0.375" x 1'	A709 Gr. 36
	2	DEFLECTOR PLATE (RIGHT)	0.375" x 1'	A709 Gr. 36
	8	0.75" x 2" LG. ROUND HEAD BOLT W/NUT		A307
	4	THREE TRANSITION PANEL	12 Ga.	M180 A2
	4	THREE BEAM	12 Ga.	M180 A2
	92	0.75" x 6" ROUND HEAD BOLT W/NUT & ROUND WASHER		A325
	76	0.625" x 2" LG. POST BOLT W/OBL RECESSED NUT, PLATE & ROUND WASHER		A307
	32	0.625" x 1.75" LG. CAP SCREW W/WASHER		A307
	128	0.625" x 1.25" LG. PANEL SPUCE BOLT W/OBL RECESSED NUT		A307
	32	0.75" x 0.5" LG. (SCH 40) SPACER PIPE		A53

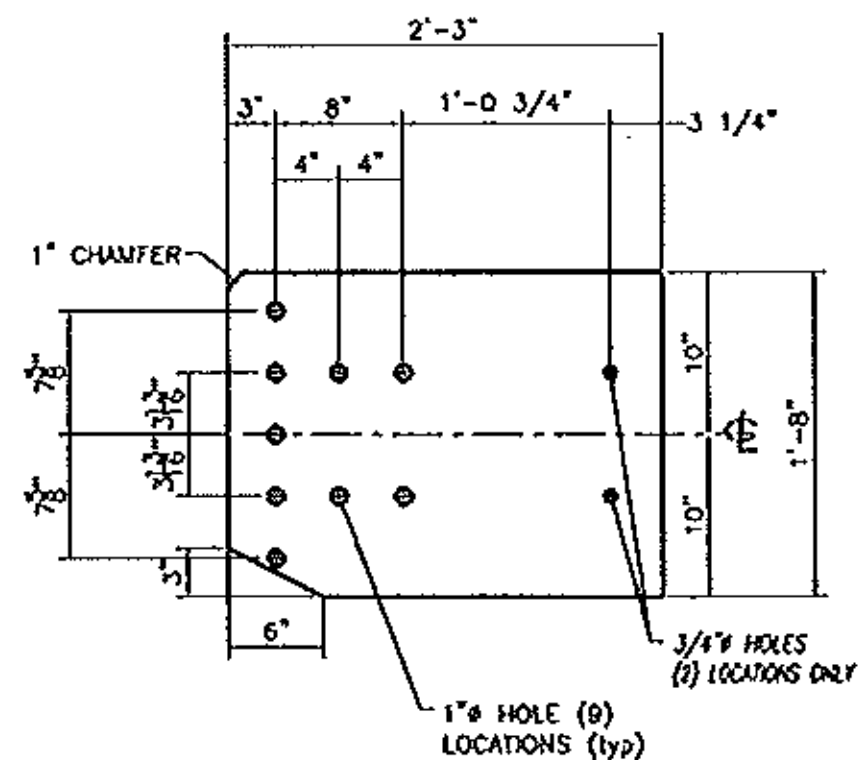
- NOTES:
- PAYMENT FOR GUARDRAIL APPROACH SECTION - NETIC 2 RAIL SHALL INCLUDE THE TERMINAL CONNECTOR, THE CONNECTION PLATE, THE DEFLECTOR PLATE, RAIL, POSTS, BLOCKS AND ATTACHMENT HARDWARE.
  - THE REFLECTORIZED ALUMINUM DELINEATOR IS TO BE ERECTED EVERY 30' (OR CLOSEST POST) WITH A 3/8" DIAMETER BOLT. DELINEATORS SHALL MEET SPECIFICATION REQUIREMENTS FOR ASTM B209 ALLOY 5052-H32.
  - ALL APPROACH RAIL SPICES SHALL BE LAPPED IN THE DIRECTION OF TRAFFIC FLOW.
  - ALL APPROACH RAIL MATERIALS, DIMENSION SIZES AND NOTES SHALL BE THE SAME AS THOSE OF THE BRIDGE RAIL, UNLESS OTHERWISE NOTED.
  - APPROACH RAIL BOLTS SHALL BE ASTM A307 GRADE A AND NUTS SHALL BE ASTM M291 (ASTM 563 GRADE A OR BETTER (GALVANNEZED). WASHERS SHALL BE ASTM F844.
  - WELD TOP SPUCE BAR TO FIT BEND. USE COMPLETE PENETRATION WELD (B-U2).
  - NORTHWEST AND SOUTHWEST APPROACHES ARE SHOWN. NORTHEAST APPROACH TO BE SET ON 492' RADIUS AND SOUTHEAST APPROACH TO BE SET ON 462' RADIUS.
  - M11 TUBES FOR NORTHEAST APPROACH TO BE SHOP CURVED TO 492' CONCAVE RADIUS. M12 TUBES FOR SOUTHEAST APPROACH TO BE SHOP CURVED TO 462' CONVEX RADIUS.



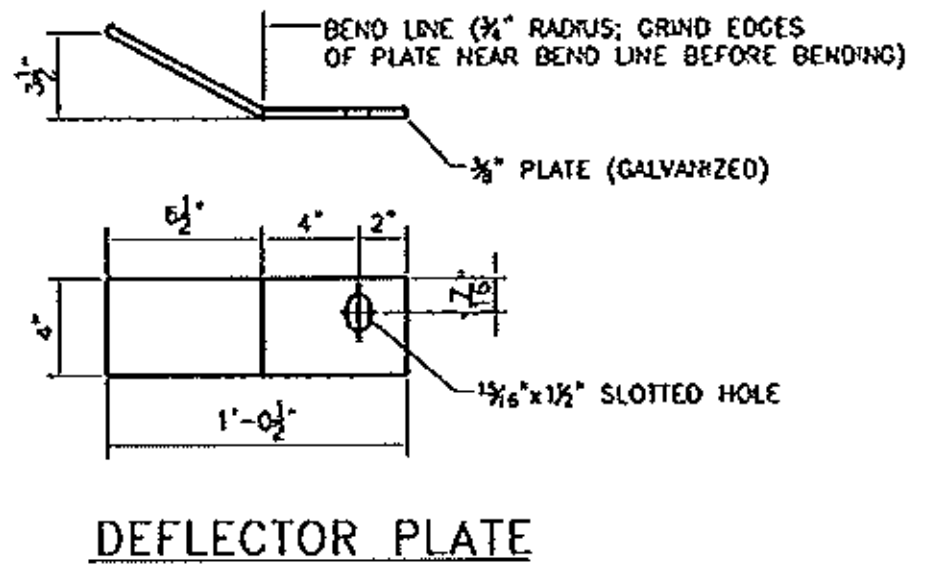
SECTION A-A



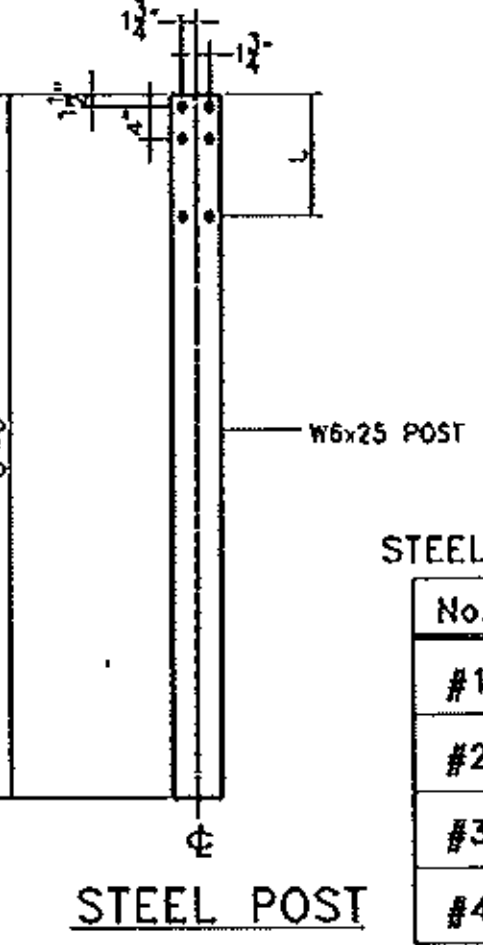
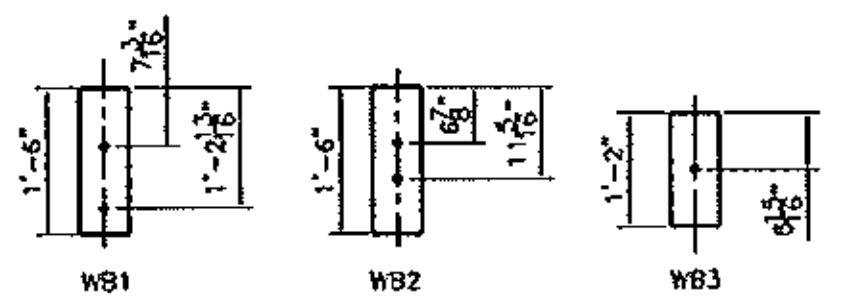
TERMINAL CONNECTOR



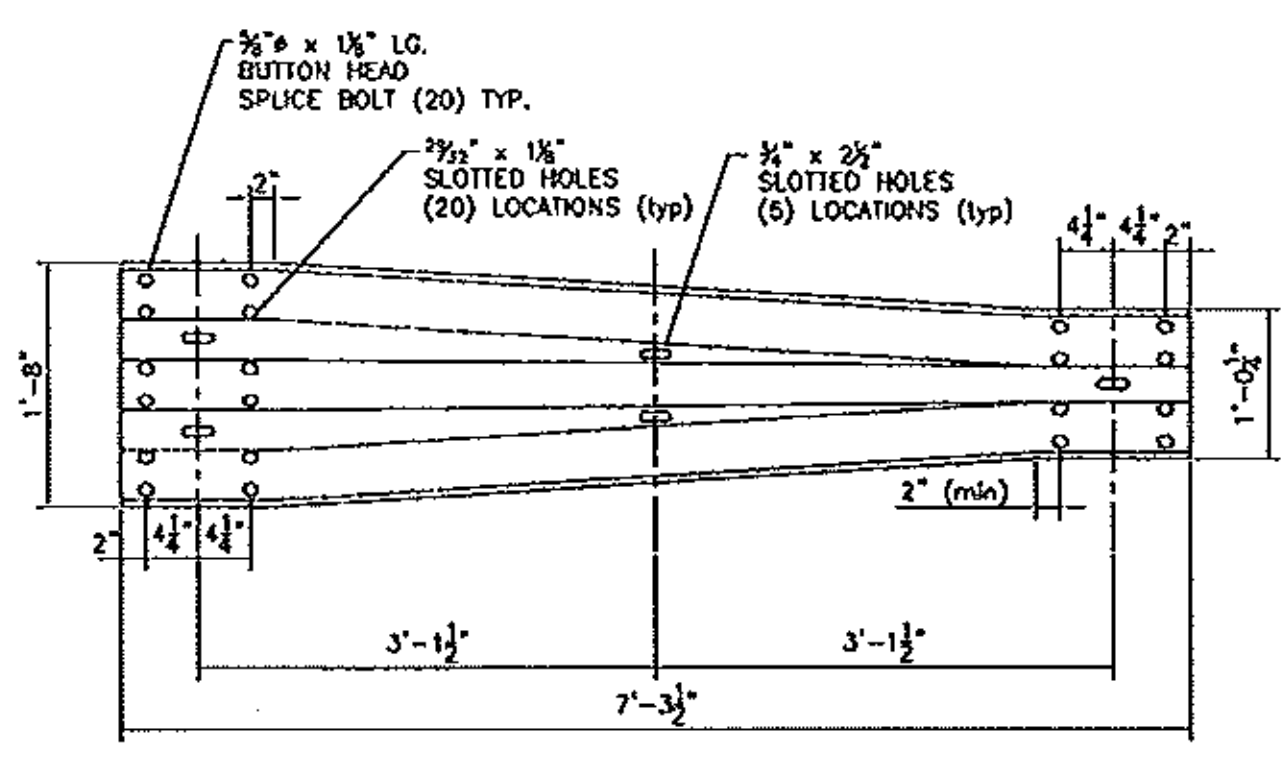
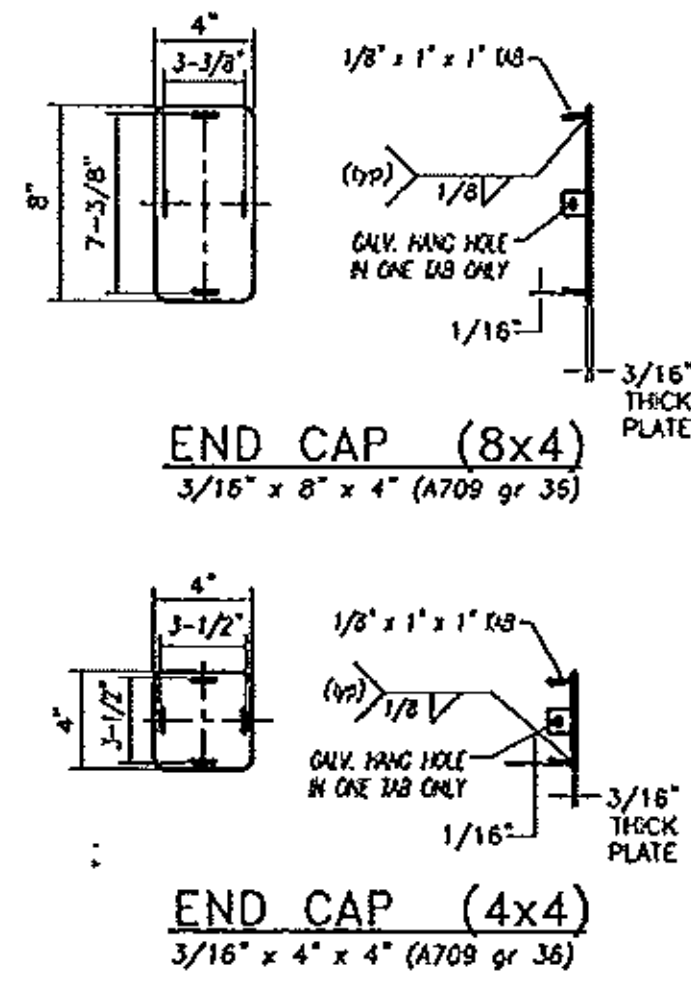
CONNECTION PLATE



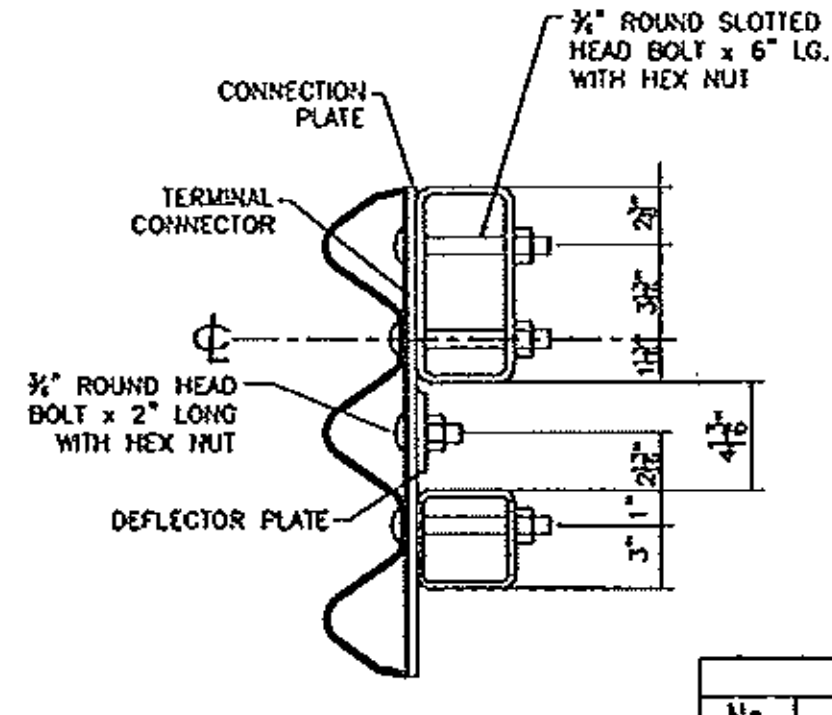
ANGLED RAIL TUBE SPICE DETAIL



STEEL POST CHART



THREE TRANSITION PANEL



SECTION B-B

REVISIONS		
No.	Remarks	Date
0	Initial submittal	

RECEIVED  
 CUBBY SSS OR'D BY  
 MAY 10 2010  
 RESUBMIT APPROVED  
 BY DATE 5/11/10

**HIGHWAY SAFETY CORP**  
 GLASTONBURY, CT  
 860-633-9445

ITEM 565.22 BRIDGE APPROACH RAIL  
 US RT 2 OVER WINOOSKI RIVER  
 MORETOWN - MIDDLESEX, VERMONT  
 PROJECT NUMBER: BRS 0284(14)

CERTIFIED FABRICATOR  
 1744  
 3 of 3

GENERAL CONTRACTOR  
 F.R. LAFAYETTE, INC.

DRAWN: MMH  
 CHECKED: PAR  
 DATE: 5/10/10  
 SCALE: NONE  
 SHEET: D