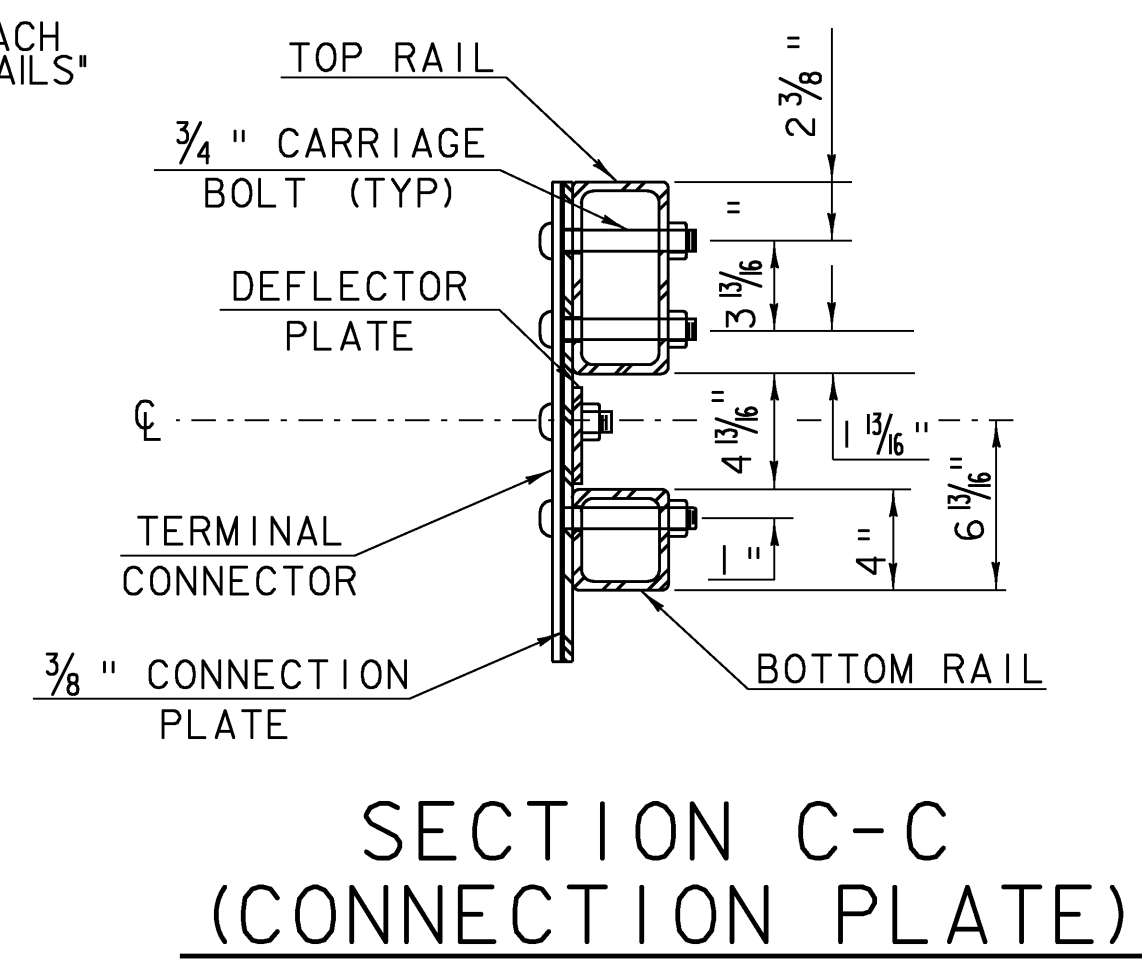
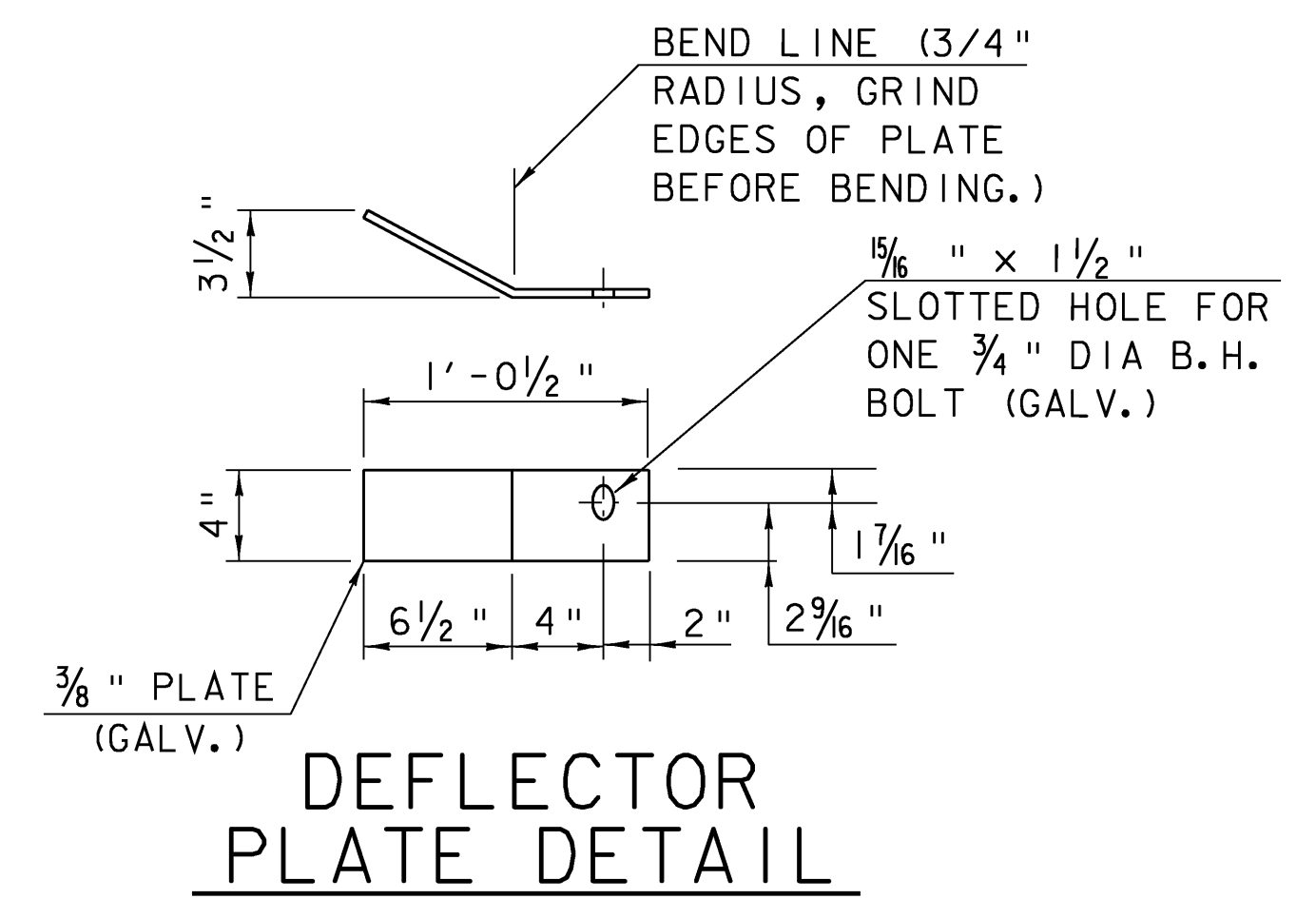


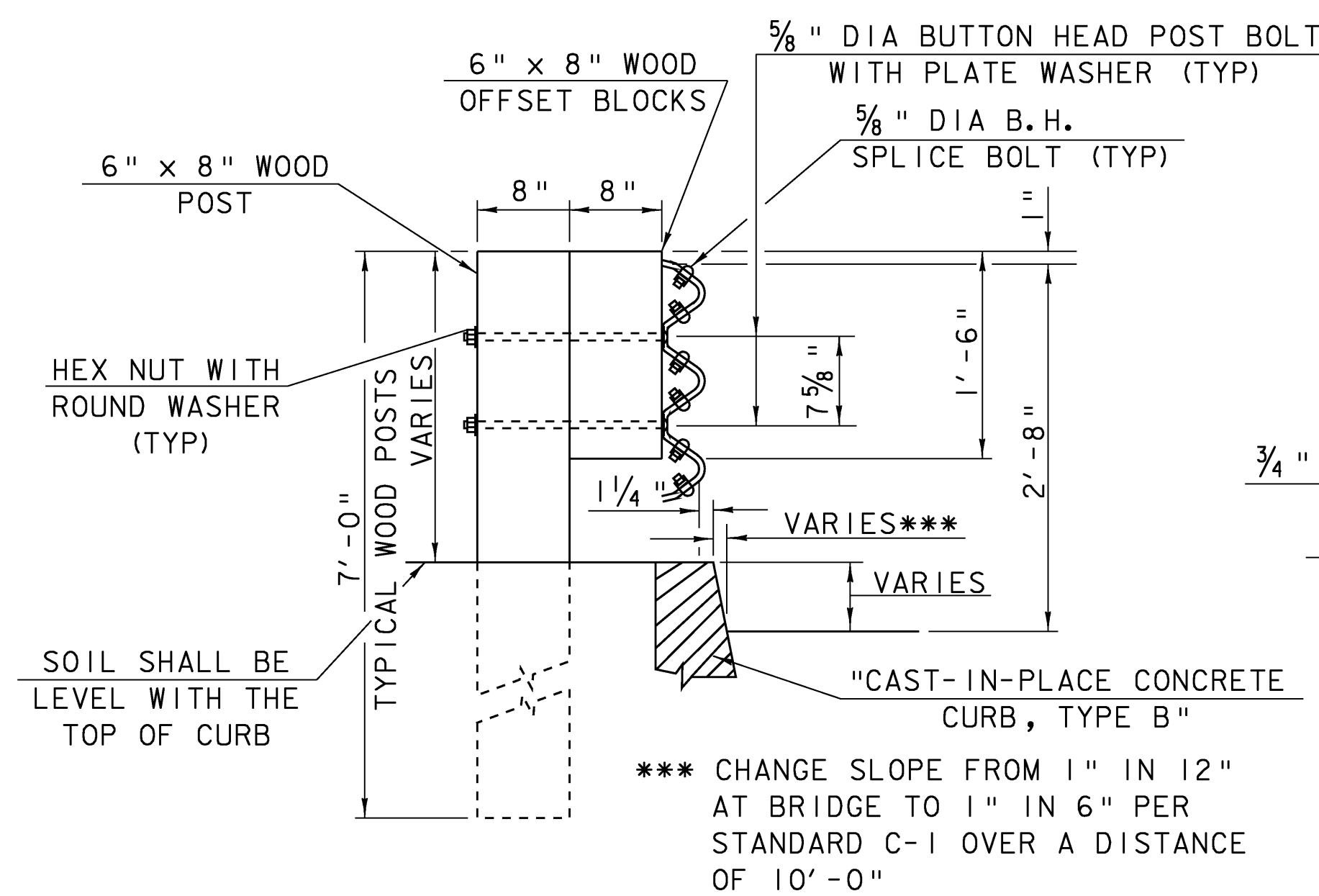
BRIDGE RAILING ELEVATION ON APPROACH SLAB



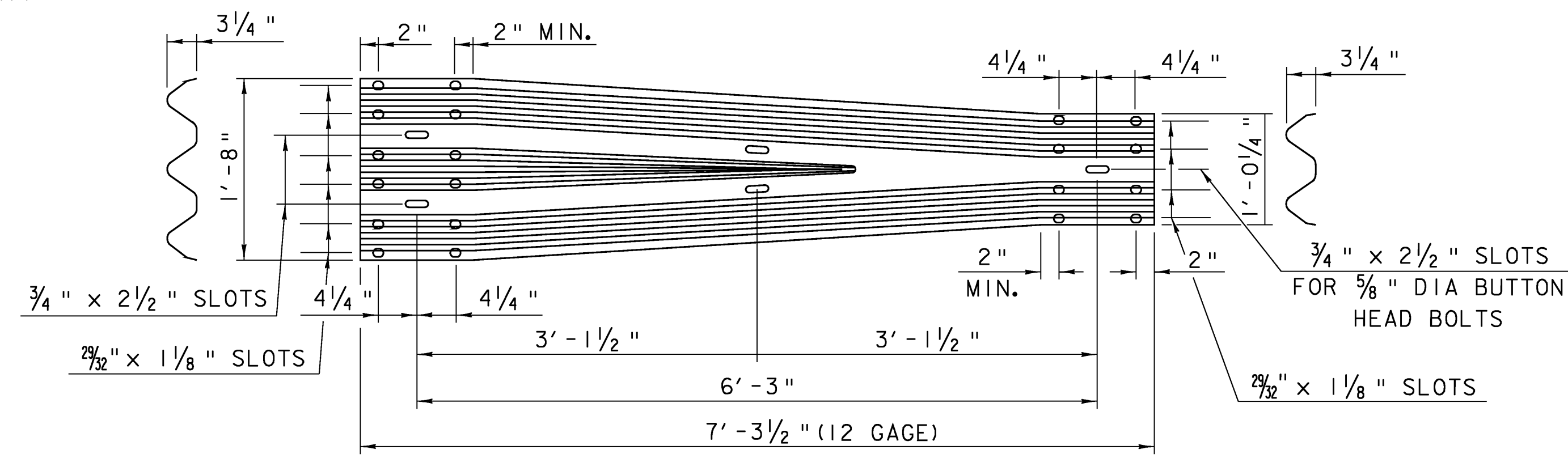
SECTION C-C (CONNECTION PLATE)



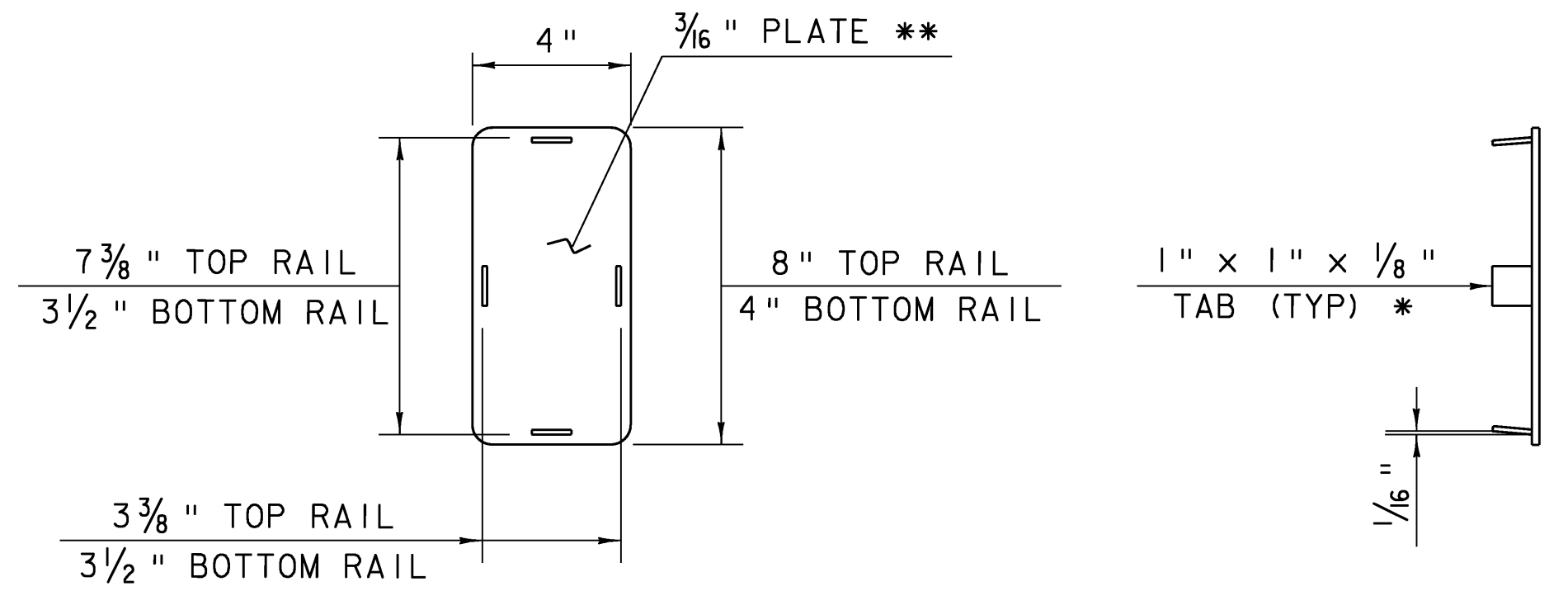
DEFLECTOR PLATE DETAIL



WOOD POST-RAIL ASSEMBLY

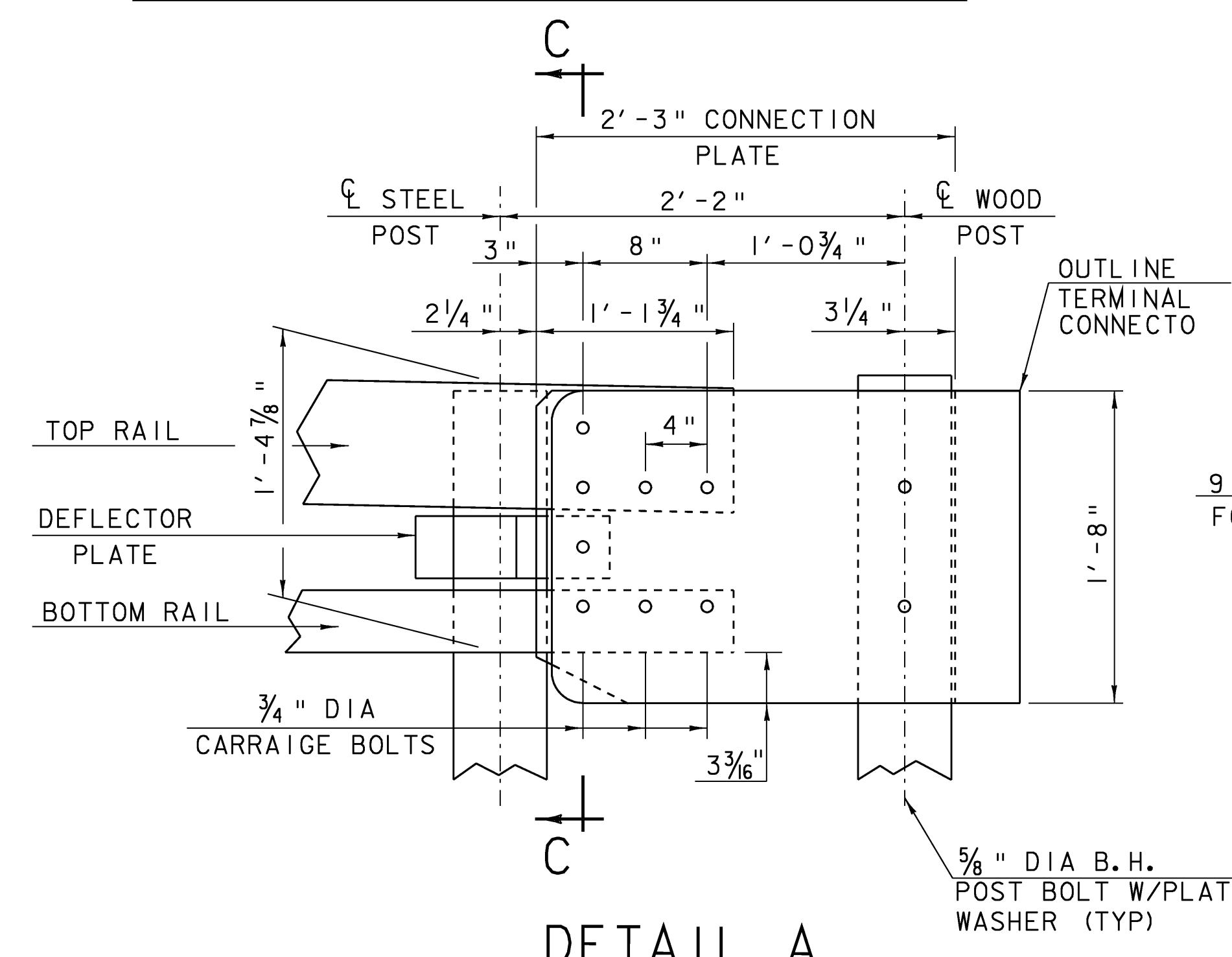


THRE-BEAM TO STD SB TRANSITION SECTION (HM-TF-13/RE-69)

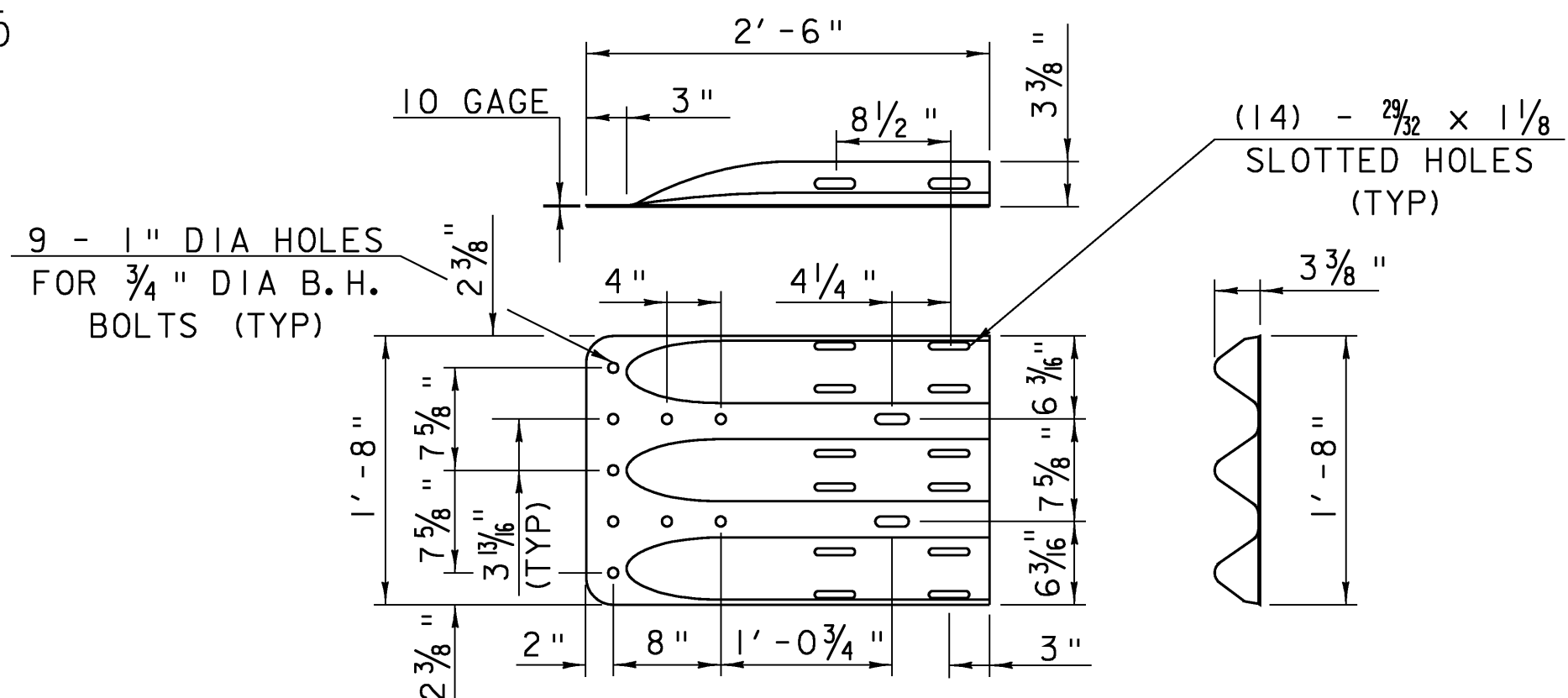


END CAP DETAIL

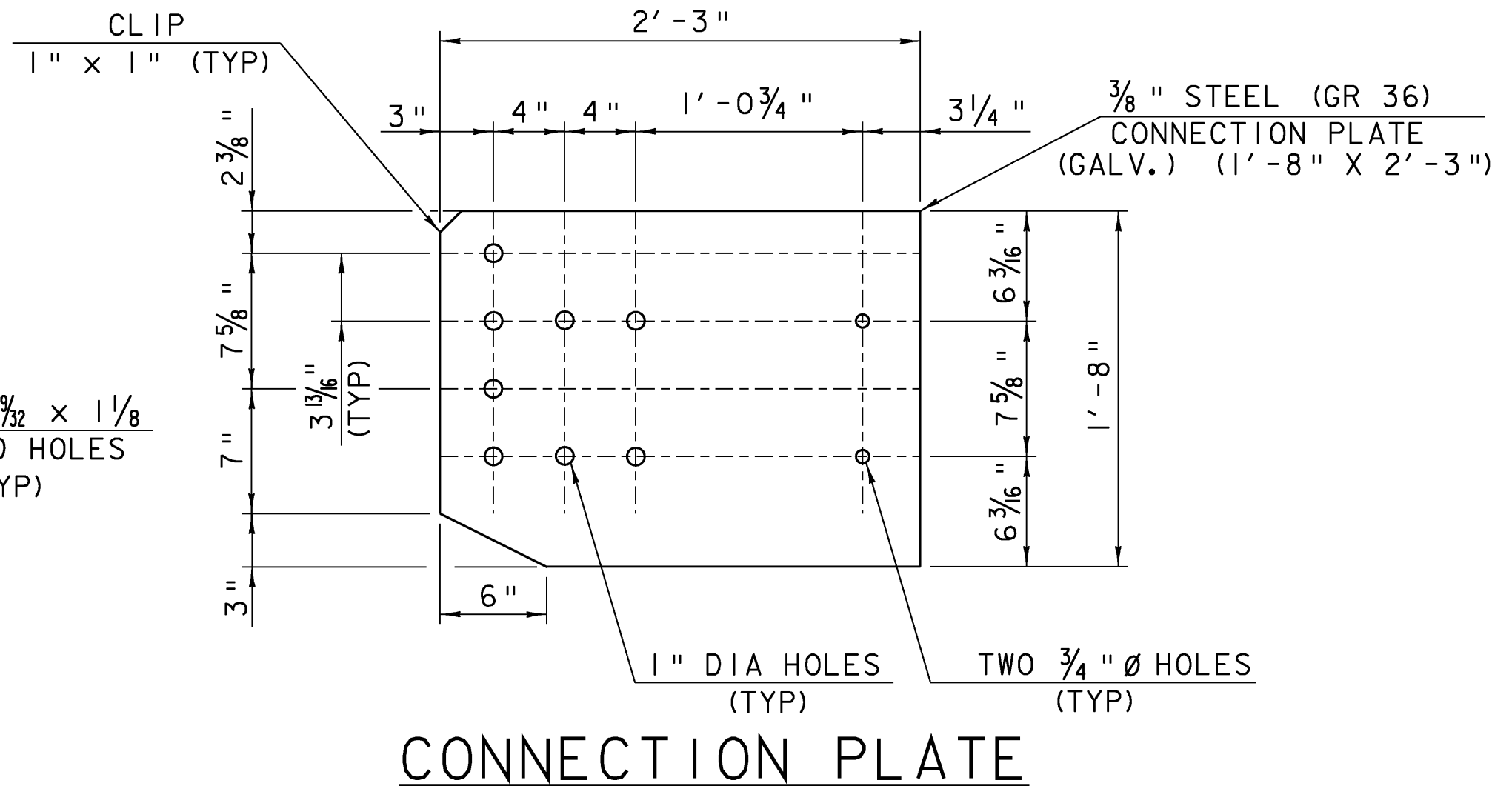
* WELD TABS TO END CAP PLATE IN TAPERED POSITION SO CAP CAN BE JAMMED INTO END OF RAIL TUBE.
 ** ROUND CORNERS 1/2" RADIUS (TYP)



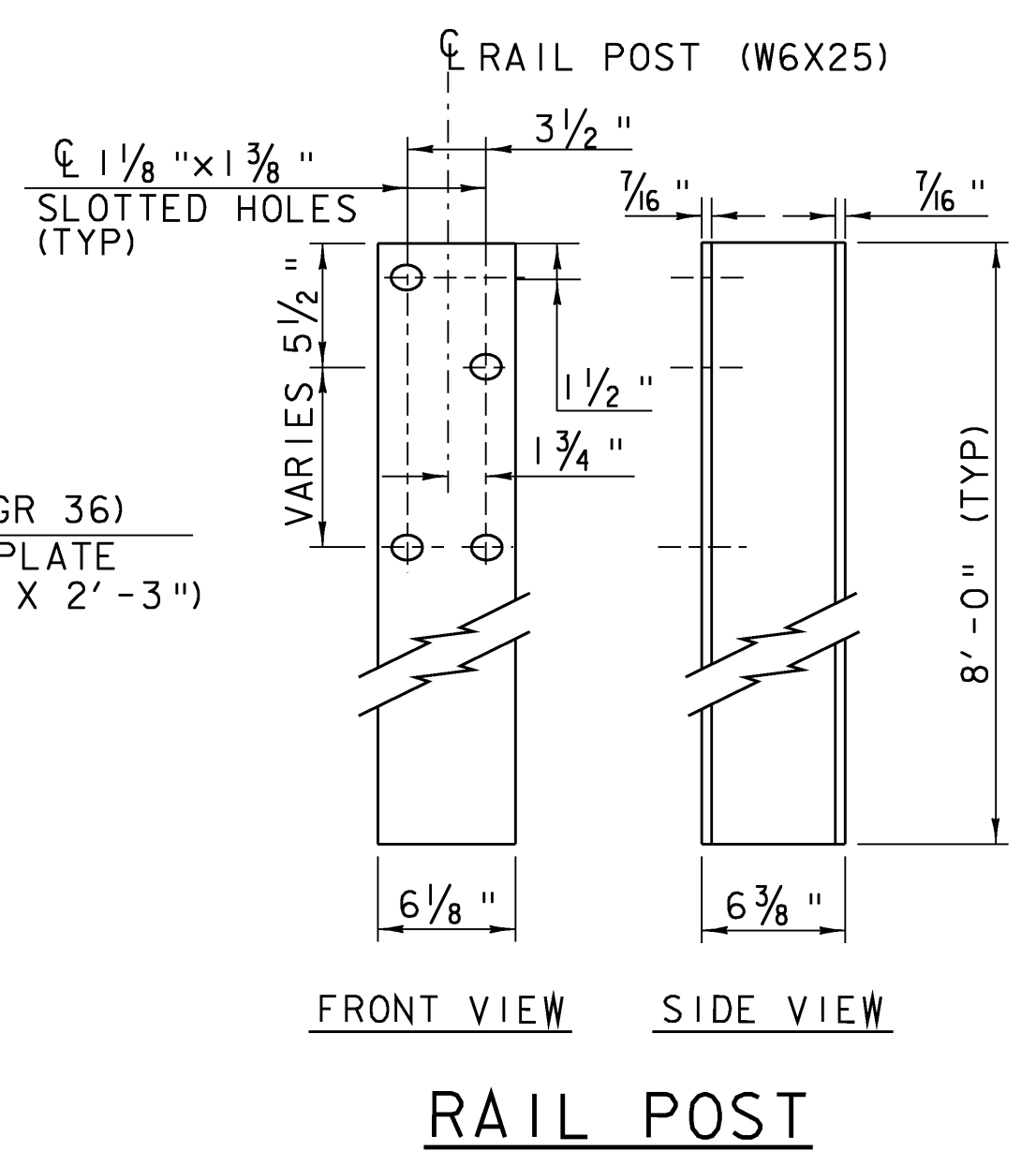
DETAIL A



THRE-BEAM TERMINAL CONNECTOR (HM-TF-13/RE-67)



CONNECTION PLATE



RAIL POST

APPROACH SLAB RAILING DETAILS	
PROJECT NAME:	MORETOWN-MIDDLESEX
PROJECT NUMBER:	BRS 0284(I4)
FILE NAME:	/78f219/str2/sf219frm.dgn
PROJECT LEADER:	EVANS-MONGEON
DESIGNED BY:	S. SCRIBNER
IPARM:	s78f219+typ.1
PLOT DATE:	15-JUN-2009
DRAWN BY:	G. ROKES
CHECKED BY:	S. SCRIBNER
SHEET	73 OF 103