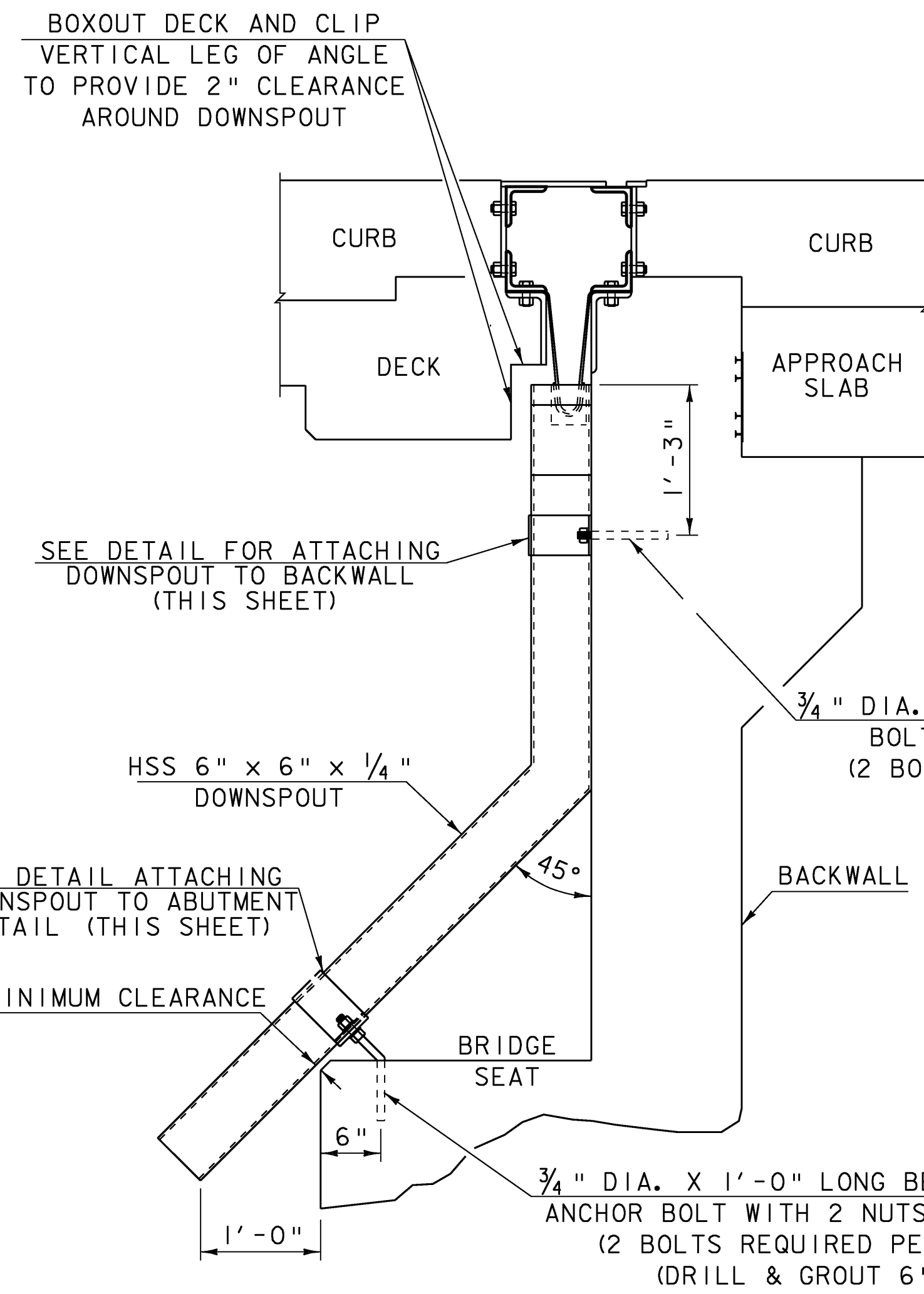
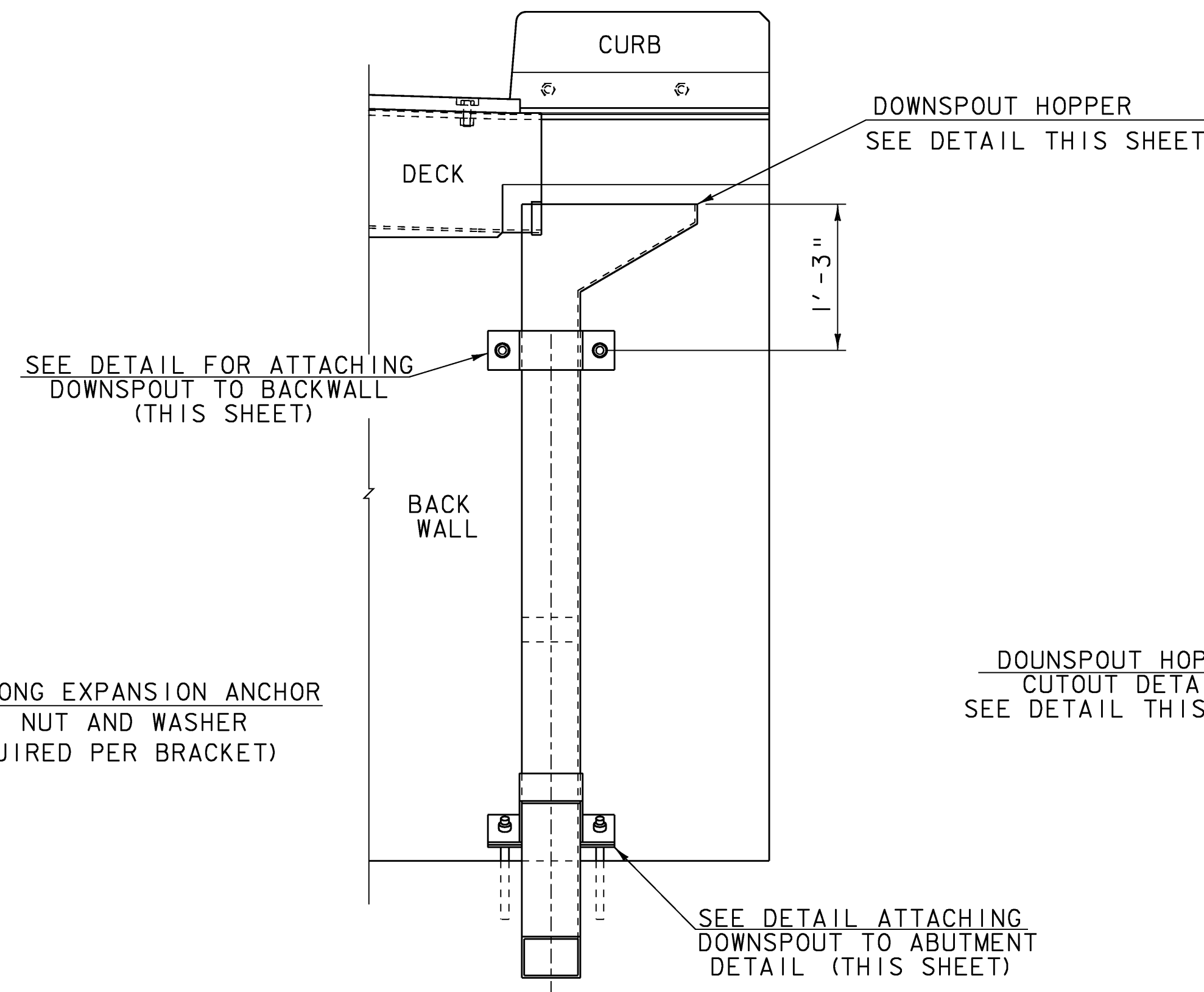
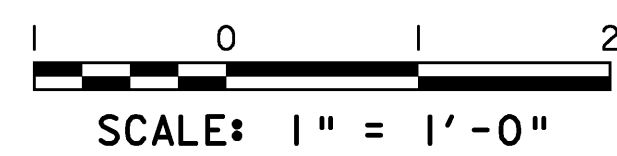


DOWNSPOUT NOTES

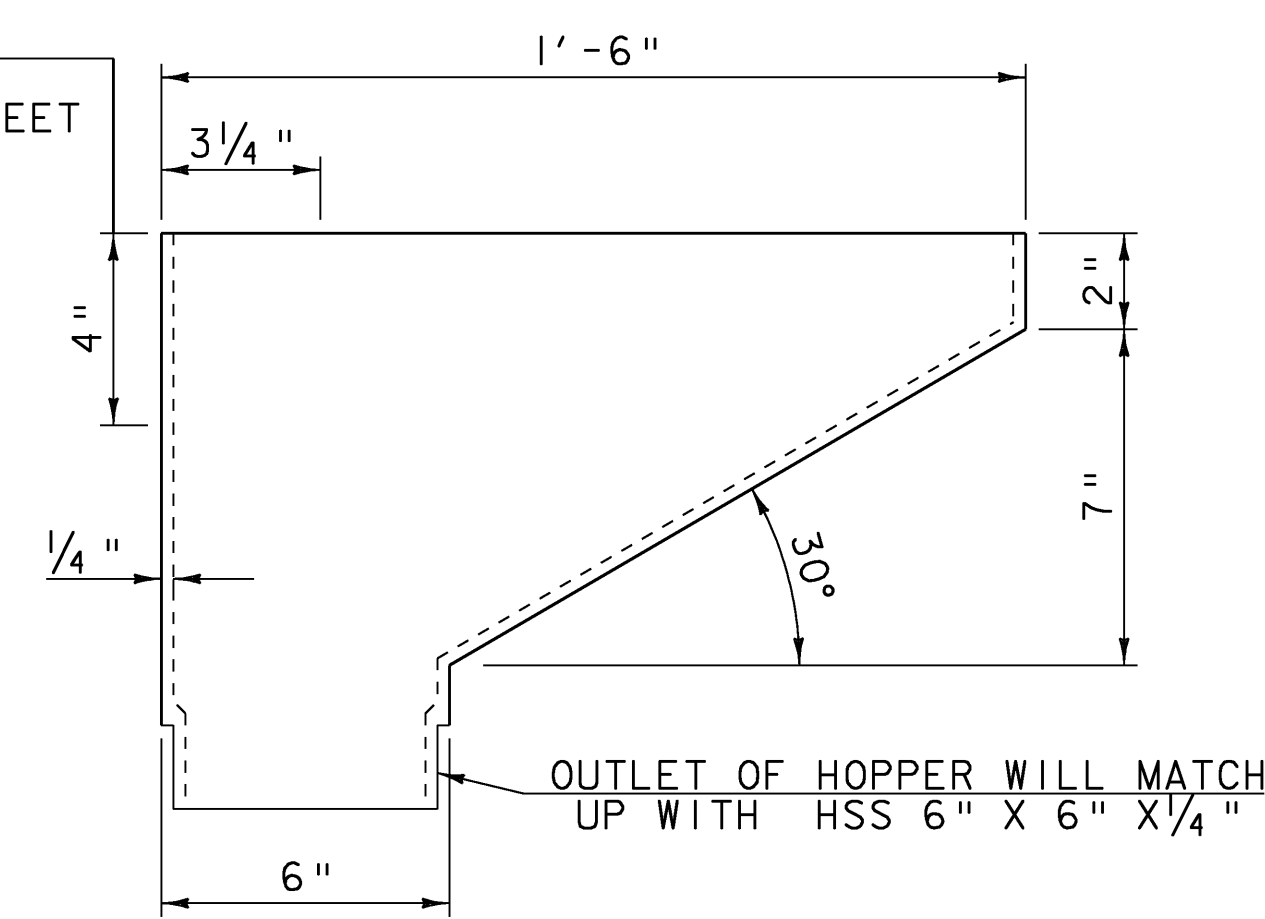
1. HOLLOW STRUCTURAL STEEL TUBING SHALL CONFORM TO ASTM A500 OR A501.
2. ALL PLATES, BARS, AND ANGLES SHALL CONFORM TO AASHTO M 270M/M 270 GR 36.
3. DOWNSPOUTS SHALL BE GALVANIZED IN ACCORDANCE WITH ASTM A123 AFTER FABRICATION. AFTER GALVANIZATION THEY SHALL BE PAINTED. THE PAINT SHALL BE BROWN COLOR CHIP #20059.
4. ALL BOLTS AND RELATED HARDWARE SHALL BE ASTM A307 AND SHALL BE GALVANIZED IN ACCORDANCE WITH ASTM A153 (AASHTO M 232M/M 232).
5. IN AREAS WHERE THE GALVANIZING HAS BEEN REMOVED FROM THE DOWNSPOUTS EITHER BY CUTTING, BURNING, WELDING, PLACING, OR ANY OTHER MEANS, IT SHALL BE REPAIRED BY THOROUGHLY CLEANING THE DAMAGED AREAS WITH A WIRE BRUSH AND PAINTING THE DAMAGED AREAS WITH TWO COATS OF AN APPROVED SEALANT.
6. ALL MATERIALS AND INSTALLATION COSTS FOR THE DOWNSPOUTS, INCLUDING STEEL TUBING, GALVANIZING, RELATED HARDWARE, AND ANCHOR BOLTS SHALL BE PAID FOR UNDER ITEM 506.60 "STRUCTURAL STEEL". PAINTING WILL BE PAID FOR UNDER THE SECTION 513 ITEMS IN THE CONTRACT.
7. ALL REFERENCES TO PLATES ON THIS SHEET ARE 1/4" THICK UNLESS OTHERWISE NOTED.



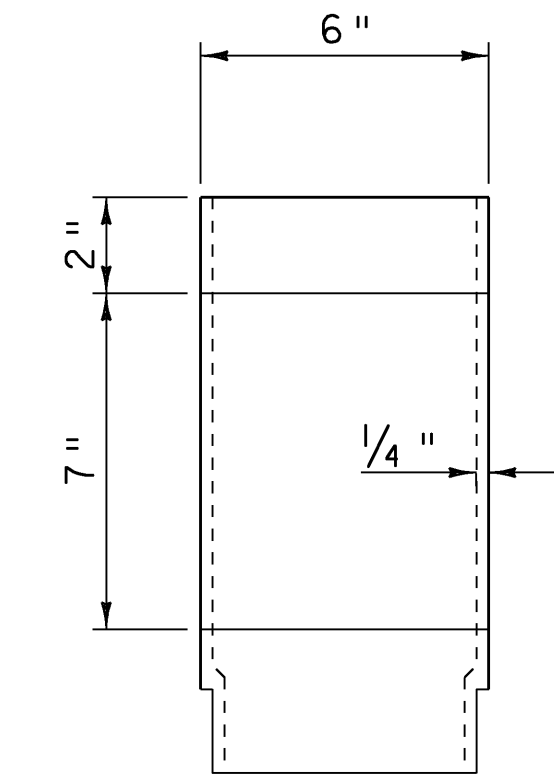
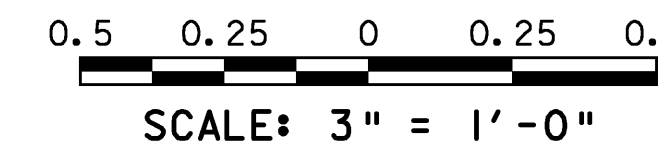
DOWNSPOUT SIDE ELEVATION



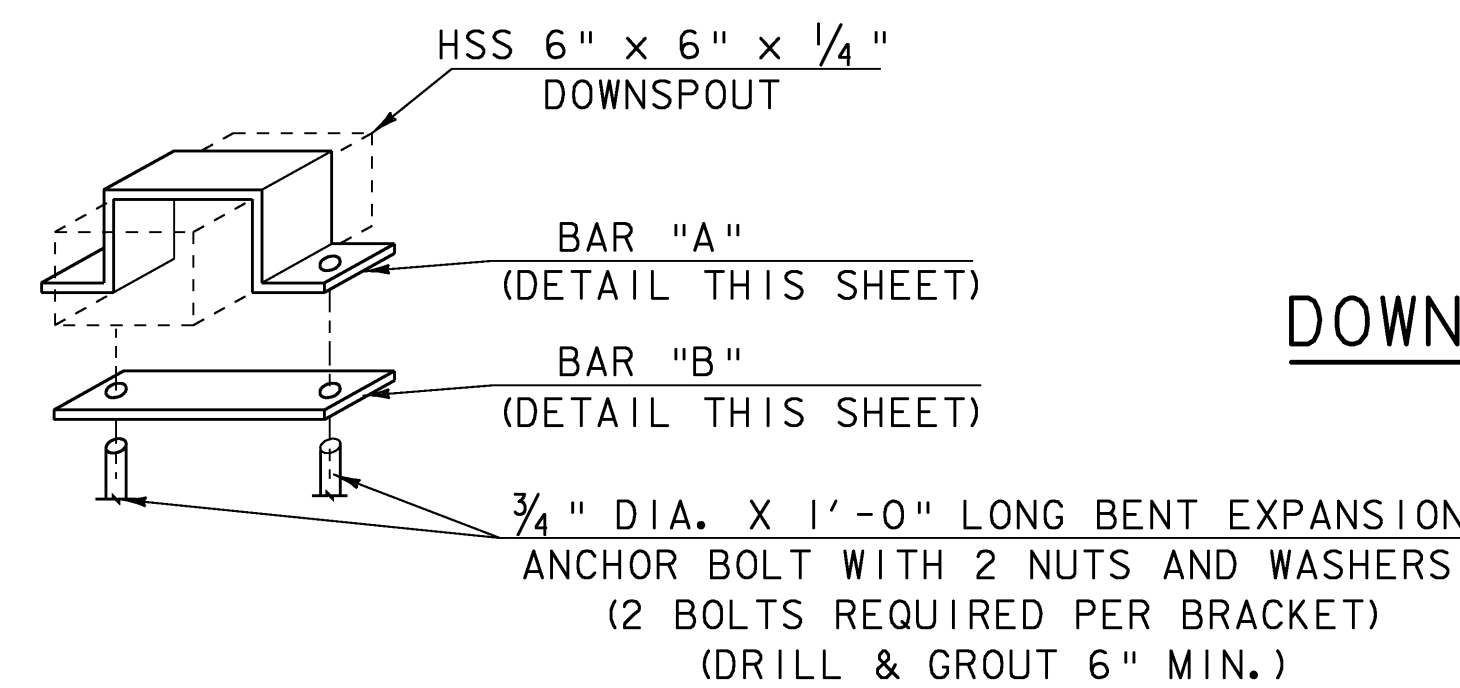
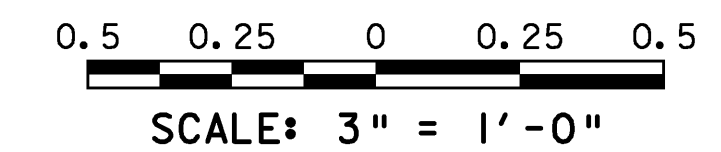
DOWNSPOUT HOPPER CUTOUT DETAIL
SEE DETAIL THIS SHEET



DOWNSPOUT HOPPER FRONT DETAIL

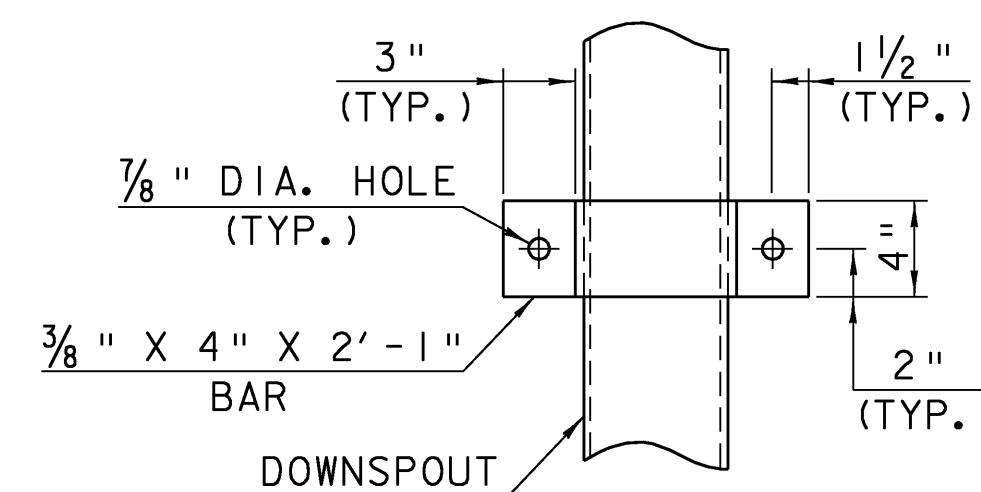


DOWNSPOUT HOPPER SIDE DETAIL

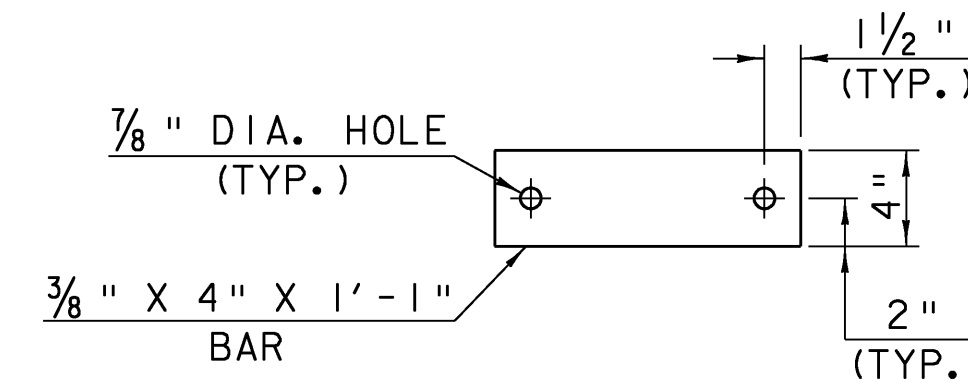
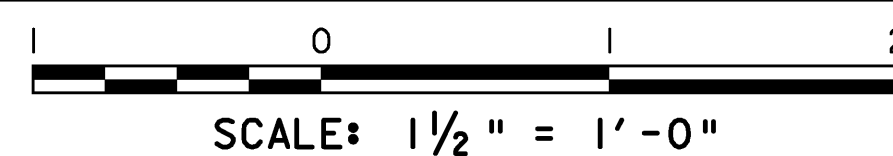


DETAIL ATTACHING DOWNSPOUT TO ABUTMENT

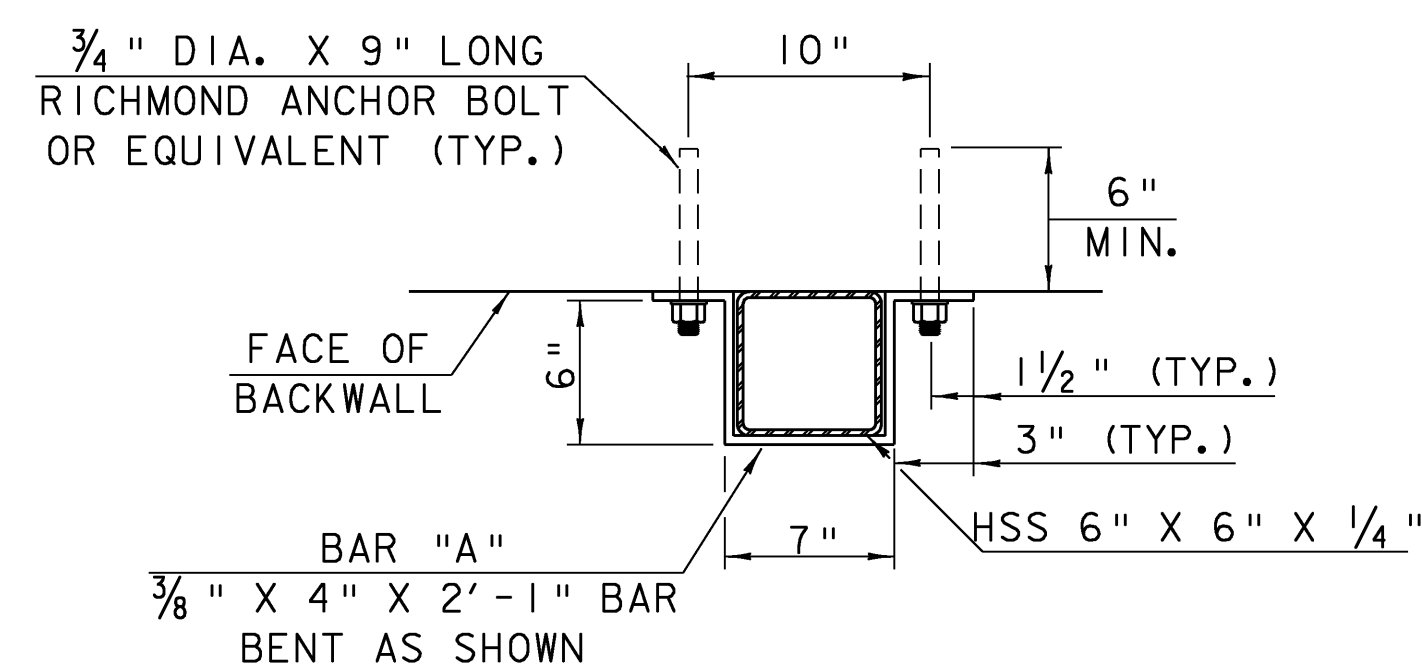
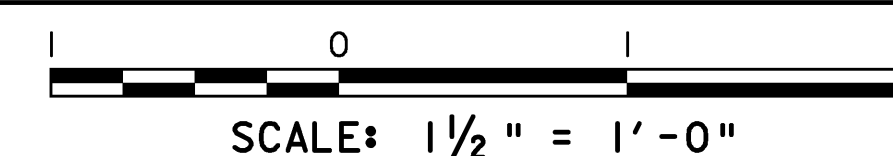
NTS



ELEVATION VIEW OF BAR "A"

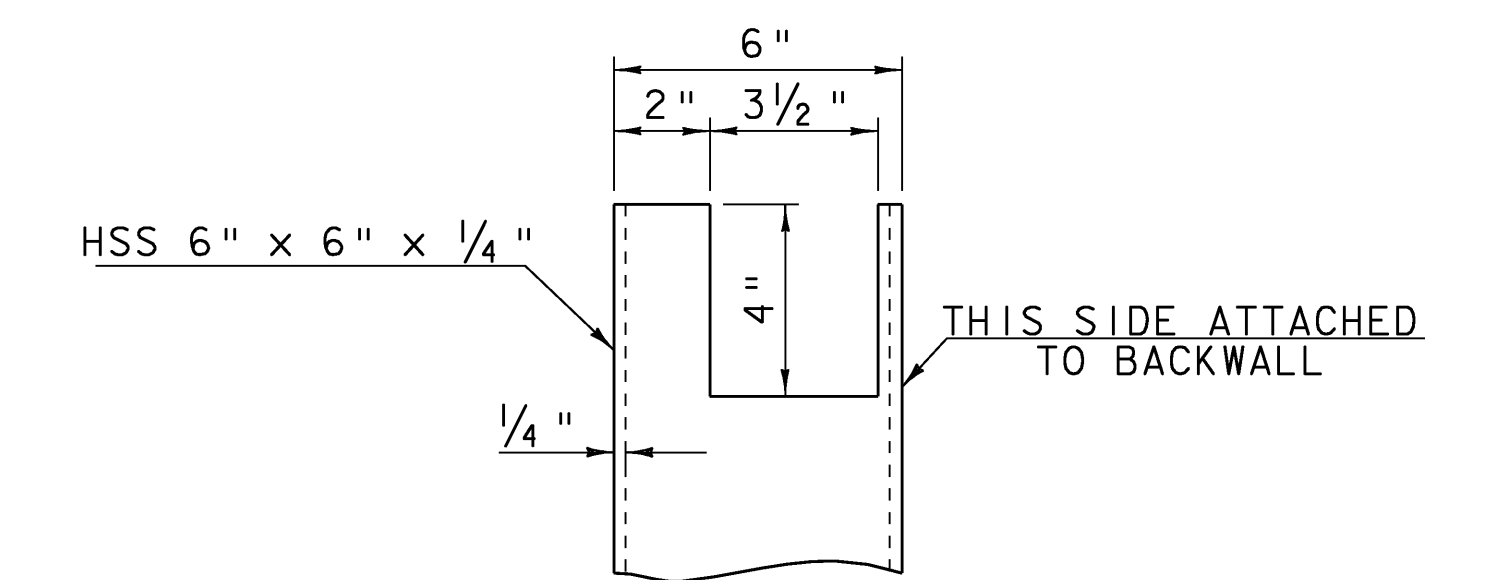
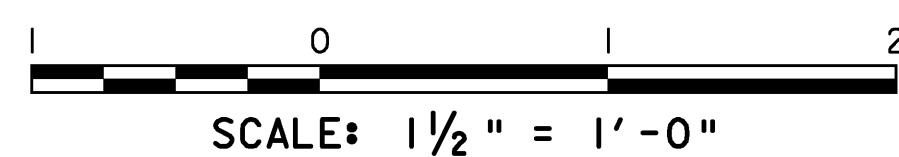


ELEVATION VIEW OF BAR "B"

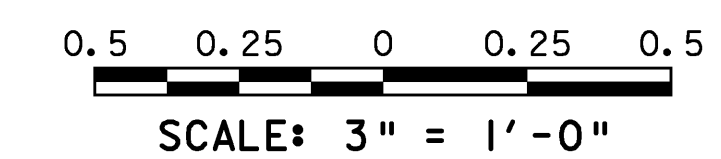


DETAIL FOR ATTACHING DOWNSPOUT TO BACKWALL

PLAN VIEW



DOWNSPOUT HOPPER CUTOUT DETAIL



DOWNSPOUT DETAILS

PROJECT NAME: MORETOWN-MIDDLESEX
PROJECT NUMBER: BRS 0284(14)

FILE NAME: 78f219/struc/sf219sup
PROJECT LEADER: M. EVANS-MONGEON
DESIGNED BY: S. SCRIBNER

PLOT DATE: 15-JUN-2009
DRAWN BY: G. ROKES
CHECKED BY: S. SCRIBNER
SHEET 58 OF 103