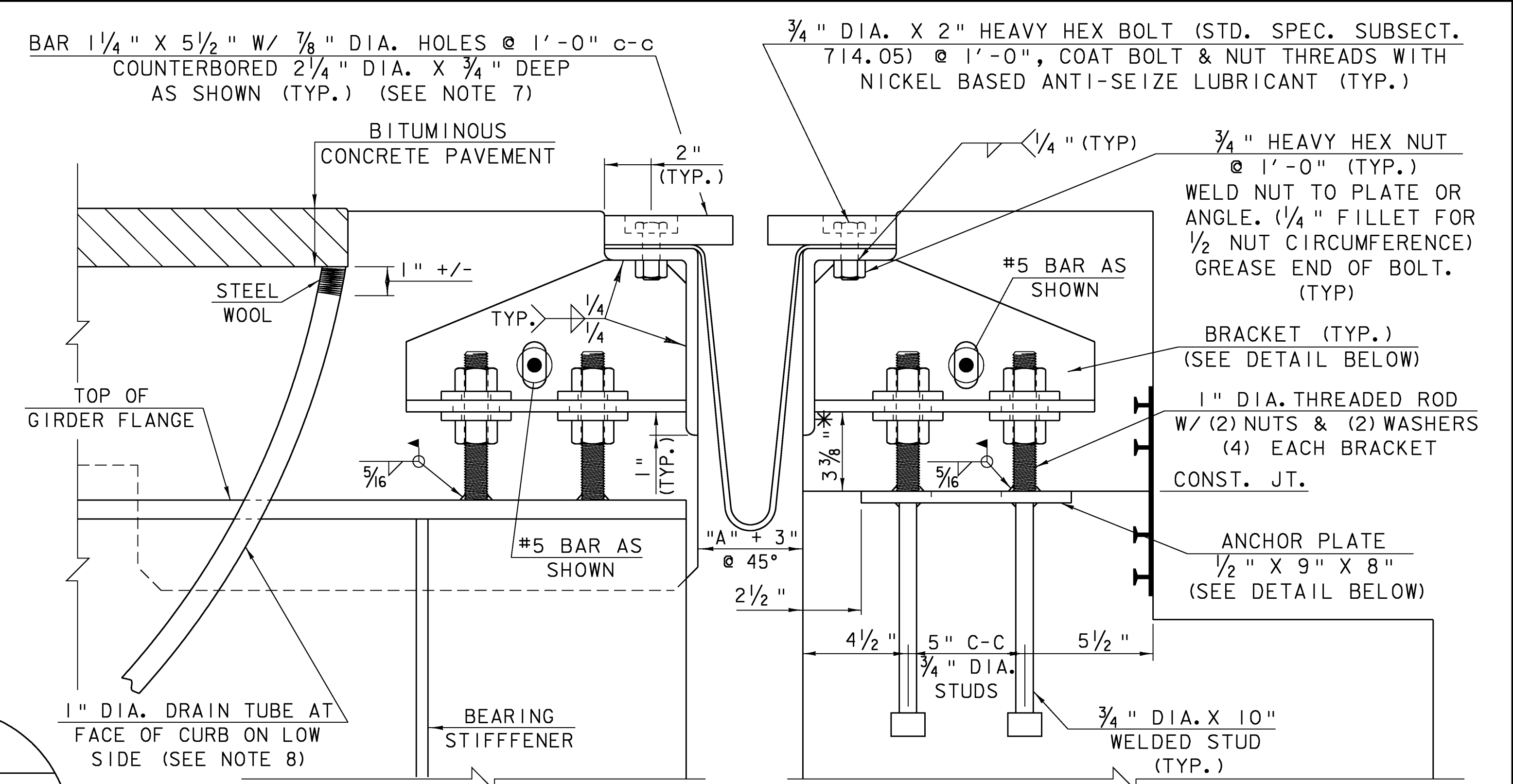
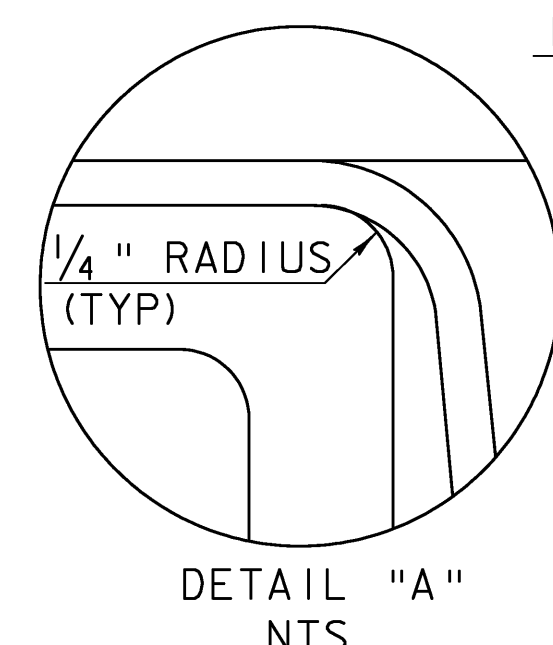
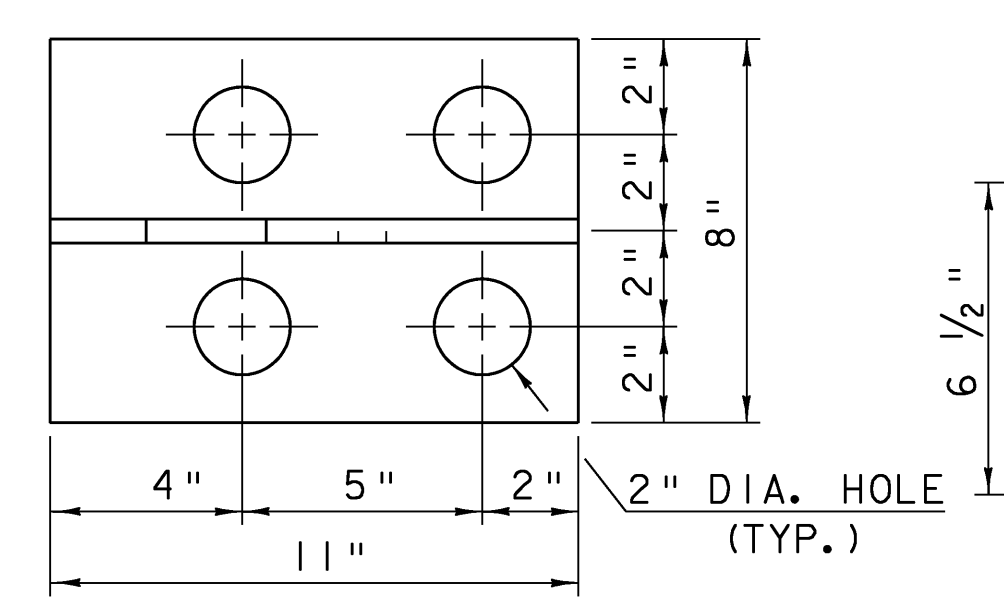


TYPICAL SECTION BETWEEN GIRDERS
(NORMAL TO \perp BEARING)

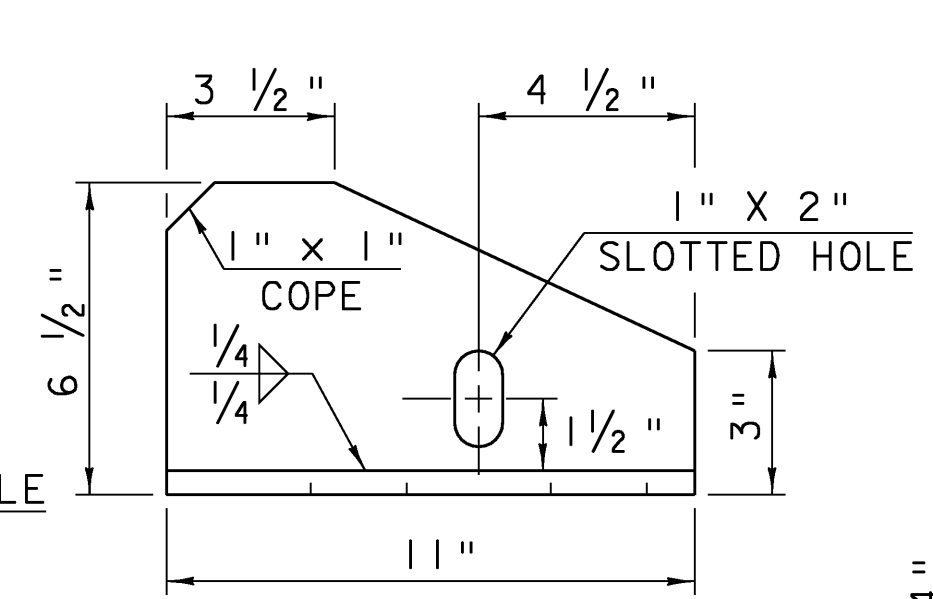


TYPICAL SECTION AT GIRDERS
(NORMAL TO \perp BEARING)

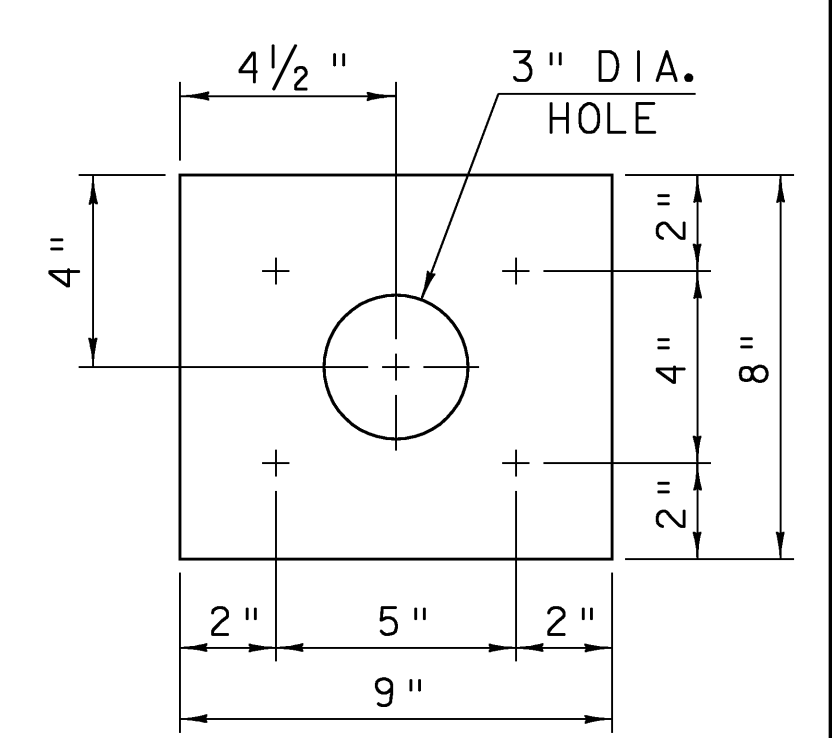
* THESE DIMENSIONS ARE THEORETICAL AND MAY CHANGE DEPENDING UPON THE OUTCOME OF THE BEAM PROFILES.



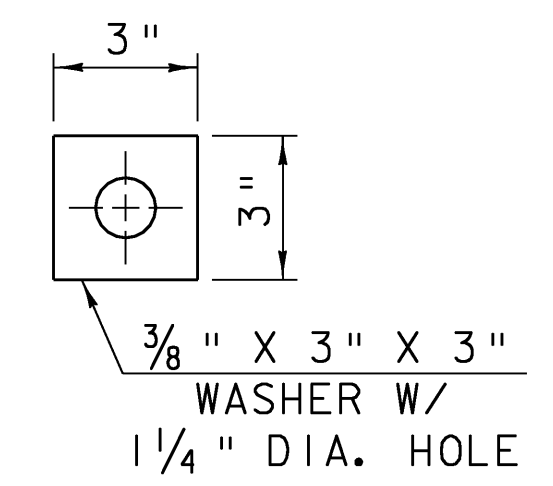
BRACKET PLAN



BRACKET ELEVATION



ANCHOR PLATE PLAN
(GALVANIZING OR METALIZING NOT REQUIRED)

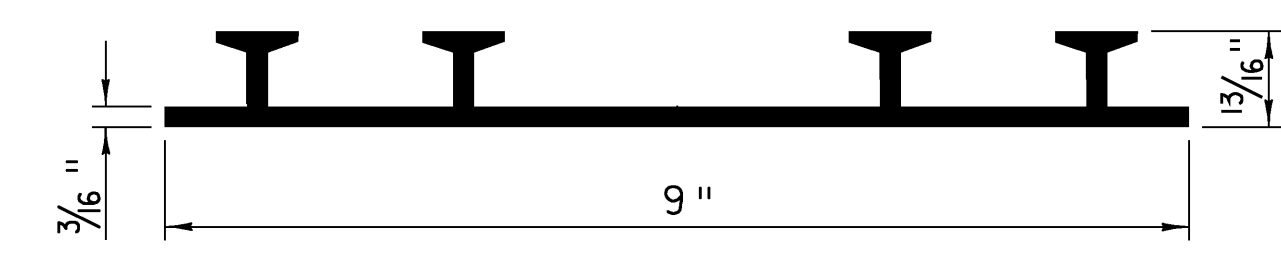
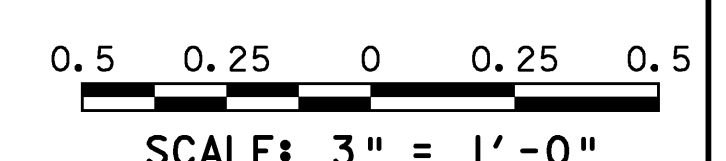


WASHER FOR BRACKET

TEMP	"A" DIST.	"B" DIST.
0°F	2 3/4"	2 1/4"
15°F	2 9/16"	2 1/16"
30°F	2 7/16"	1 15/16"
45°F	2 1/4"	1 3/4"
68°F	2"	1 1/2"
75°F	1 15/16"	1 7/16"
90°F	1 3/4"	1 1/4"
105°F	1 5/8"	1 1/8"

"A" IS THE SETTING BEFORE DEAD LOADS ARE IN PLACE.

"B" IS THE FINAL SETTING AFTER ALL DEAD LOADS ARE IN PLACE.



P.V.C. WATERSTOP FOR CONSTRUCTION JOINTS

NOT TO SCALE

1. DETAILS ON THIS SHEET ARE FOR ITEM 516.11 "BRIDGE EXPANSION JOINT, VERMONT".
2. PREFORMED FABRIC MATERIAL SHALL BE CONTINUOUS FOR THE FULL LENGTH OF THE JOINT.
3. THE FINAL FINISH OF THE EXPANSION DEVICE SHALL BE COVERED DURING THE PLACING OF BRIDGE DECK CONCRETE.
4. ALL STEEL COMPONENTS SHALL BE GALVANIZED OR METALIZED AND MEET THE REQUIREMENTS OF SUBSECTION 516.02. THREADED RODS SHALL CONFORM TO THE REQUIREMENTS OF SUBSECTION 714.04. THE 1/2"x9"x6" ANCHOR PLATE AND WELDED STUD ASSEMBLY MAY BE SUPPLIED WITHOUT GALVANIZING OR METALIZING.
5. THE ITEM "BRIDGE EXPANSION JOINT, VERMONT" SHALL INCLUDE THE FABRICATION AND ERECTION OF THE COMPLETE JOINT ASSEMBLY INCLUDING ALL STEEL PLATES, BRACKETS, ANGLES, WELDED STUDS OR RODS, PREFORMED FABRIC DRAIN TROUGH MATERIAL AND PLASTIC DRAIN TUBES, BUTYL RUBBER TAPE AND ANY OTHER MISCELLANEOUS MATERIAL NECESSARY TO INSTALL JOINT.
6. THE 4" X 8" X 1/2" ANGLES SHALL BE FURNISHED AS ONE CONTINUOUS PIECE. THE 1 1/4" X 5 1/2" BARS EACH SIDE OF THE JOINT SHALL BE PROVIDED IN TWO EQUAL LENGTHS.
7. FILL COUNTERBORED HOLES WITH HOT POURED JOINT SEALER (SUBSECTION 707.04) AFTER BOLT INSTALLATION. PAYMENT FOR THE WORK SHALL BE INCIDENTAL TO ITEM 516.11 "BRIDGE EXPANSION JOINT, VERMONT".
8. A 1" DIAMETER PLASTIC DRAIN TUBE (PER SUBSECTION 740.01) SHALL BE INSTALLED AS SHOWN AT THE FACE OF CURB. THE UPPER END IS TO BE PLUGGED WITH STEEL WOOL AND THE LOWER END IS TO EXTEND BELOW THE BOTTOM OF THE ADJACENT BEAM. STEEL WOOL MATERIAL WILL BE APPROVED BY THE ENGINEER. THE DRAIN TUBES SHALL BE FASTENED TO THE BEAMS USING A METHOD APPROVED BY THE ENGINEER.
9. THE EXPANSION JOINT SHALL BE SHOP ASSEMBLED AND SHIPPED AS ONE UNIT.

10. THE COST FOR P.V.C. WATERSTOP SHALL BE INCLUDED IN THE UNIT PRICE BID FOR ITEM 501.34, "CONCRETE, HIGH PERFORMANCE CLASS B". OTHER CONFIGURATIONS MAY BE USED UPON APPROVAL BY THE STRUCTURES ENGINEER.
11. A DRIP BEAD OF 1/4" X 7" STRIP OF PREFORMED FABRIC MATERIAL SHALL BE CEMENTED TO THE BOTTOM OF THE FABRIC TROUGH USING AN ADHESIVE APPROVED BY THE MANUFACTURER. THE DRIP BEAD SHALL BE APPLIED 1" FROM THE DOWNSPOUT END OF THE TROUGH.
12. FABRIC TROUGH SHALL BE THOROUGHLY CLEANED AND FLUSHED AFTER PAVING OPERATION.
13. PRIOR TO GALVANIZING OR METALIZING, ALL CORNERS AND EDGES OF STEEL PLATES, SHAPES, ETC., SHALL BE GROUND TO A 1.6mm (1/16 INCH) RADIUS.
14. TEMPORARY SHIPPING ATTACHMENTS SHALL BE ATTACHED BY BOLTING; WELDING WILL NOT BE PERMITTED.
15. PROJECTING THREADS OF THE 3/4" BOLTS IN THE JOINT SHALL BE GREASED BY THE CONTRACTOR PRIOR TO PLACING ADJACENT CONCRETE. THIS WILL FACILITATE BOLT REMOVAL IF REQUIRED IN THE FUTURE.

EXPANSION JOINT DETAILS

PROJECT NAME:	MORETOWN-MIDDLESEX	PLOT DATE:	15-JUN-2009
PROJECT NUMBER:	BRS 0284(I4)	DRAWN BY:	G.ROKES
FILE NAME:	78f219/struc./sf219sup	CHECKED BY:	S.SCRIBNER
PROJECT LEADER:	M.EVANS-MONGEON	SHEET	55 OF 103