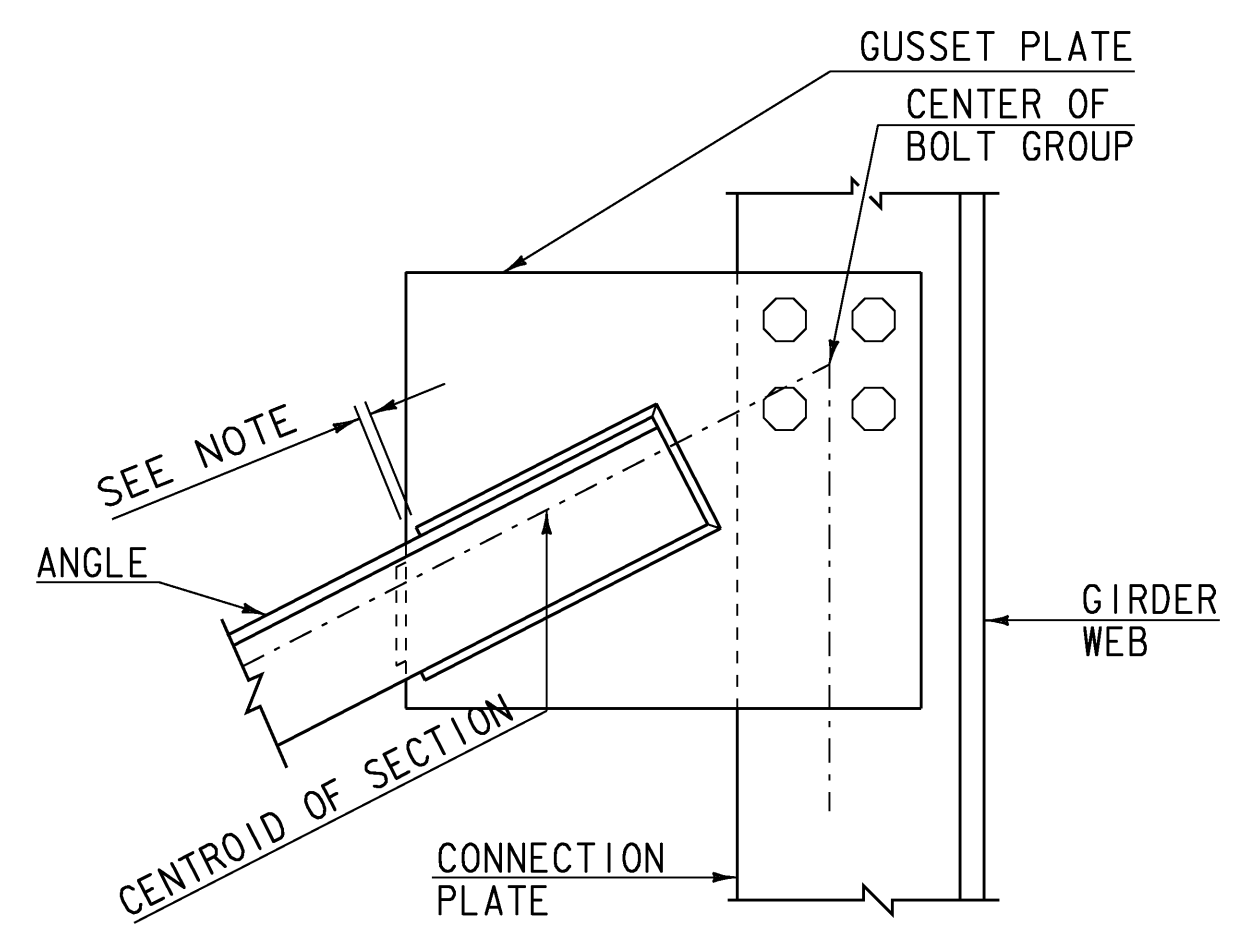


**INTERMEDIATE CROSSFRAME**

THE FABRICATOR MAY ALTER THE SHAPE OF THE GUSSET PLATES AS SEEN FIT WHILE MAINTAINING THE BOLT HOLE LOCATIONS.

TEMPLATE SIZES FOR ALL CROSS FRAMES WILL DEPEND ON THE GIRDER DEPTH AT THE CROSS FRAME CONNECTION PLATES AS SHOWN ON THE FRAMING PLAN.

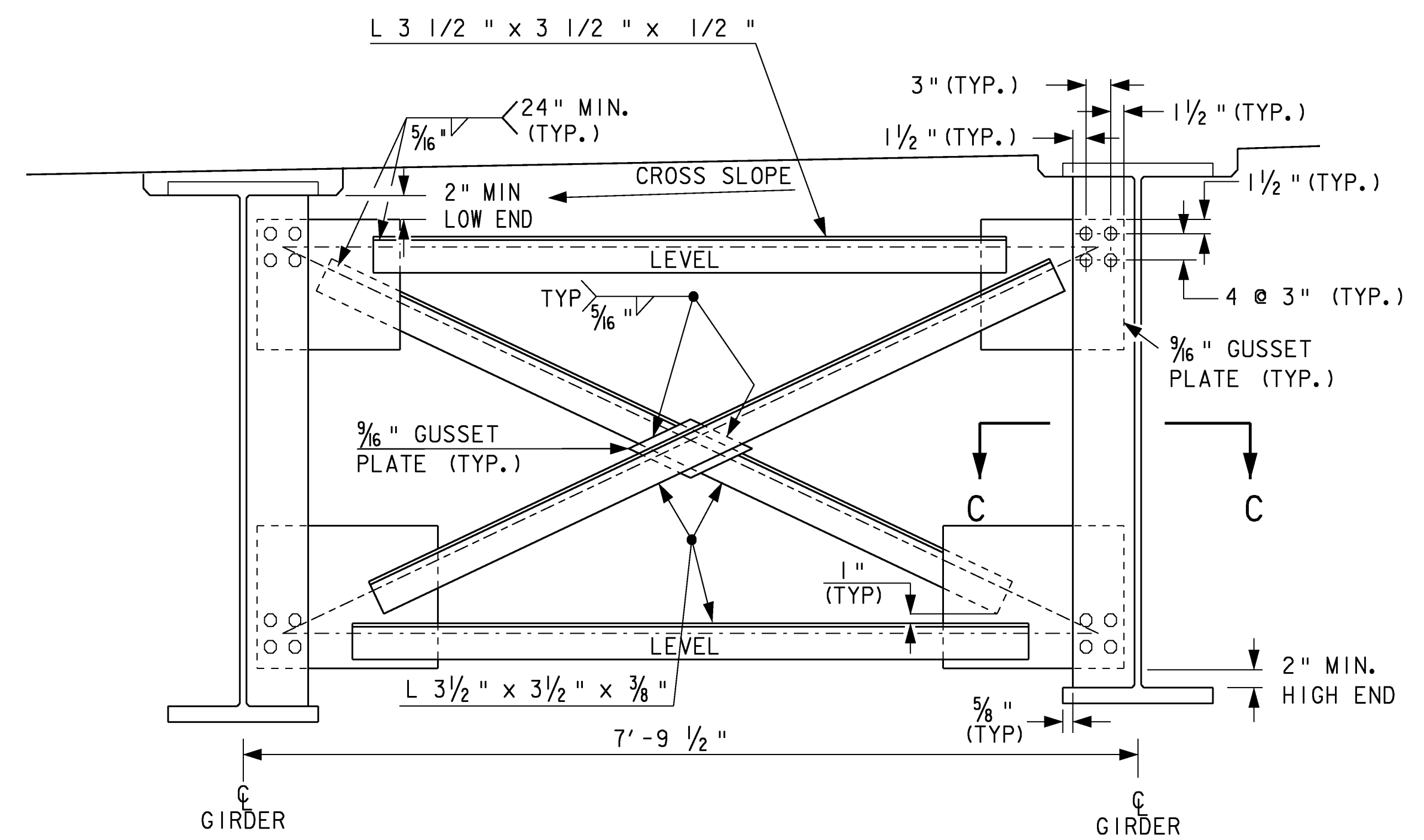


NOTE: NO WELD FOR 1/4" MIN., 1/2" MAX. DISTANCE FROM GUSSET PLATE EDGES

**GUSSET PLATE AND WELD DETAIL FOR CROSSFRAME**

**STRUCTURAL STEEL NOTES :**

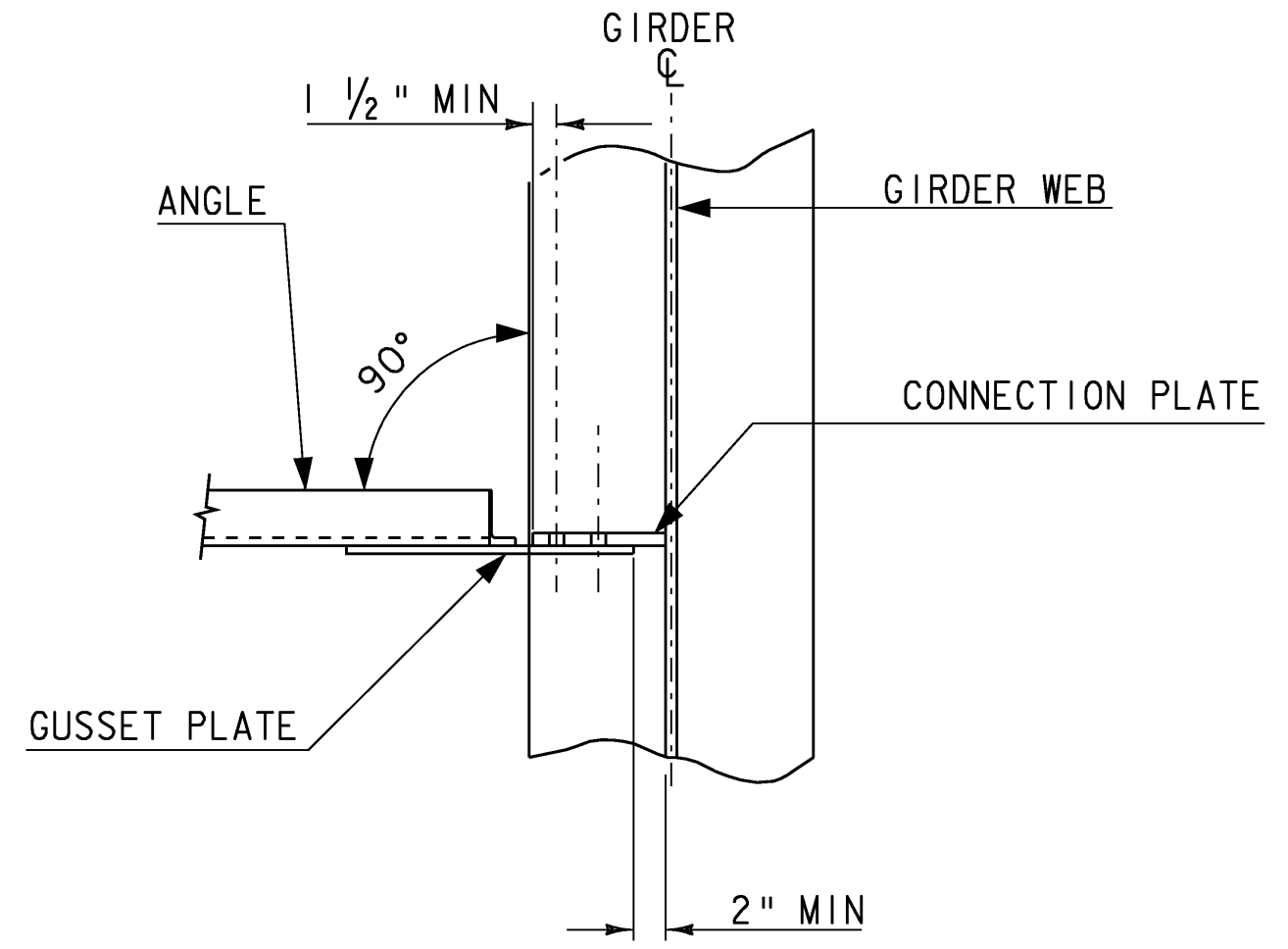
- 1.) ALL STRUCTURAL STEEL, EXCEPT FOR THE DOWNSPOUTS, INCLUDING BUT NOT LIMITED TO GIRDERS, CROSS FRAMES AND CONNECTION PLATES SHALL CONFORM TO AASHTO M270/M270M GRADE 50W AND SHALL BE PAID UNDER THE ITEM 506.55 "STRUCTURAL STEEL, PLATE GIRDER".
- 2.) ALL FIELD CONNECTIONS IN UNPAINTED AREAS SHALL BE MADE USING 7/8" DIAMETER TYPE 3 BOLTS MEETING AASHTO M 164, TYPE 3 SPECIFICATIONS. ALL HOLES SHALL BE 1/8" DIAMETER EXCEPT HOLES IN THE CONNECTION PLATES SHALL BE 1" DIAMETER. IN PAINTED AREAS ALL FIELD CONNECTIONS SHALL BE MADE USING 7/8" DIAMETER TYPE 1 BOLTS MEETING AASHTO M 164 SPECIFICATIONS. ANY CONNECTIONS NOT DESIGNATED SHALL BE DETAILED BY THE FABRICATOR AND SUBMITTED TO THE PROJECT MANAGER FOR APPROVAL. ALL TYPE 1 BOLTS SHALL BE GALVANIZED PER AASHTO M232M/M232.
- 3.) ANY HOLES IN THE FACIA BEAMS NOT OTHERWISE FILLED SHALL BE FITTED WITH BOLTS CONFORMING TO AASHTO M 164, TYPE 3.
- 4.) THE ENDS OF THE GIRDERS SHALL BE PAINTED FOR A DISTANCE OF 10'-0" AT EACH END. ALL CROSS FRAMES AND CONNECTION PLATES LOCATED IN THIS AREA SHALL ALSO BE PAINTED. THE PAINT SYSTEM SHALL CONFORM TO SECTION 513 OF THE STANDARD SPECIFICATIONS AND THE FINAL COLOR SHALL BE BROWN CONFORMING TO SUBSECTION 708.03. GREASE SHALL ALSO BE APPLIED IN THIS AREA AS SPECIFIED IN SUBSECTION 513.06 (d). THE GREASE SHALL BE BROWN.
- 5.) STRUCTURAL STEEL MEMBERS DESIGNATED "CVN" IN THE PLANS SHALL BE CHARPY V-NOTCH TESTED IN ACCORDANCE WITH SUBSECTION 714.
- 6.) SEE SUPERSTRUCTURE DETAILS SHEETS, FRAMING PLAN SHEET 1, FRAMING PLAN SHEET 2, AND BEAM SPLICE/HAUNCH DETAILS SHEET FOR ADDITIONAL DETAIL INFORMATION.
- 7.) ENDS OF GIRDERS TO BE VERTICAL IN FINAL POSITION.



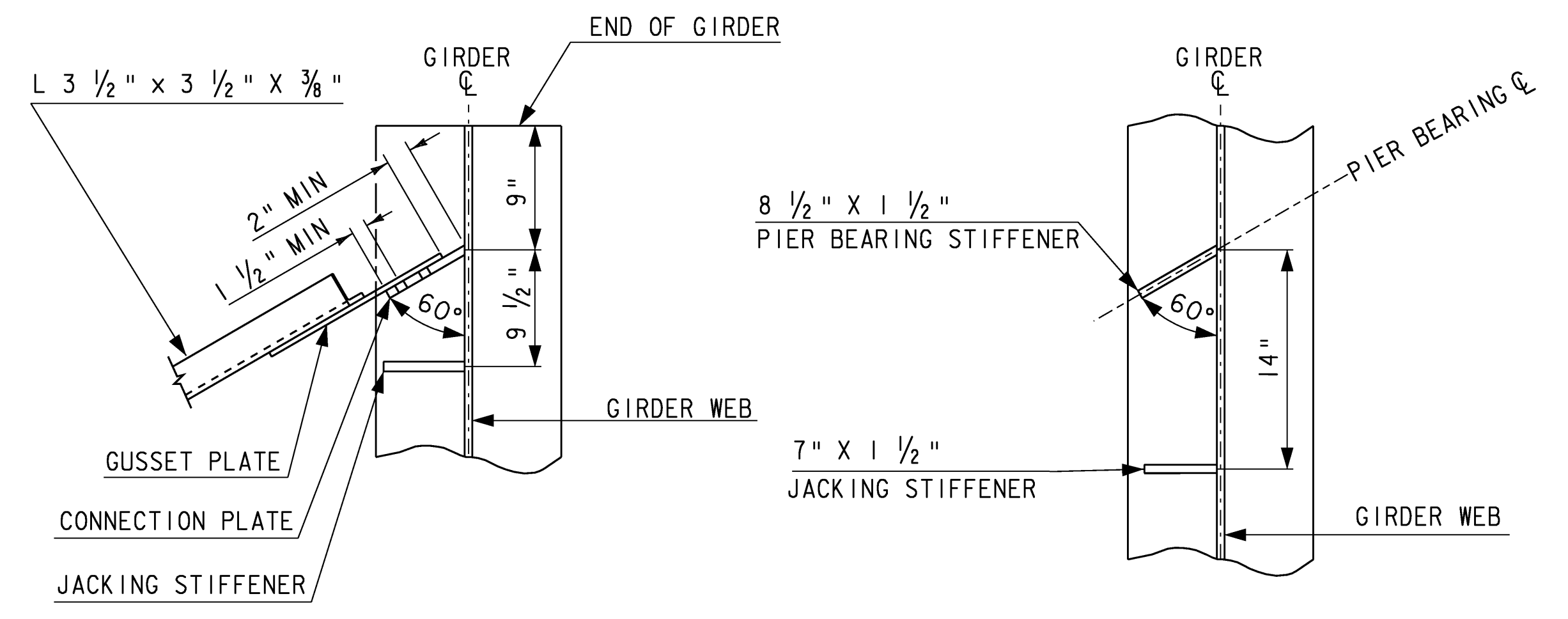
**ABUTMENT 1&2 BEARING CROSSFRAME**

THE FABRICATOR MAY ALTER THE SHAPE OF THE GUSSET PLATES AS SEEN FIT WHILE MAINTAINING THE BOLT HOLE LOCATIONS.

TEMPLATE SIZES FOR ALL CROSS FRAMES WILL DEPEND ON THE GIRDER DEPTH AT THE CROSS FRAME CONNECTION PLATES AS SHOWN ON THE FRAMING PLAN.



**SECTION B-B**



**SECTION C-C**

**PIER BEARING/JACKING STIFFENER DETAIL**

ALL DETAILS ON THIS SHEET ARE DRAWN NOT TO SCALE UNLESS NOTED OTHERWISE

**STRUCTURAL STEEL DETAILS**

PROJECT NAME: MORETOWN-MIDDLESEX	PLOT DATE: 15-JUN-2009
PROJECT NUMBER: BRS 0284(14)	DRAWN BY: G.ROKES
FILE NAME: 78f219/struc./sf219sup	CHECKED BY: S. SCRIBNER
PROJECT LEADER: M. EVANS-MONGEON	SHEET 48 OF 103
DESIGNED BY: S.SCRIBNER	