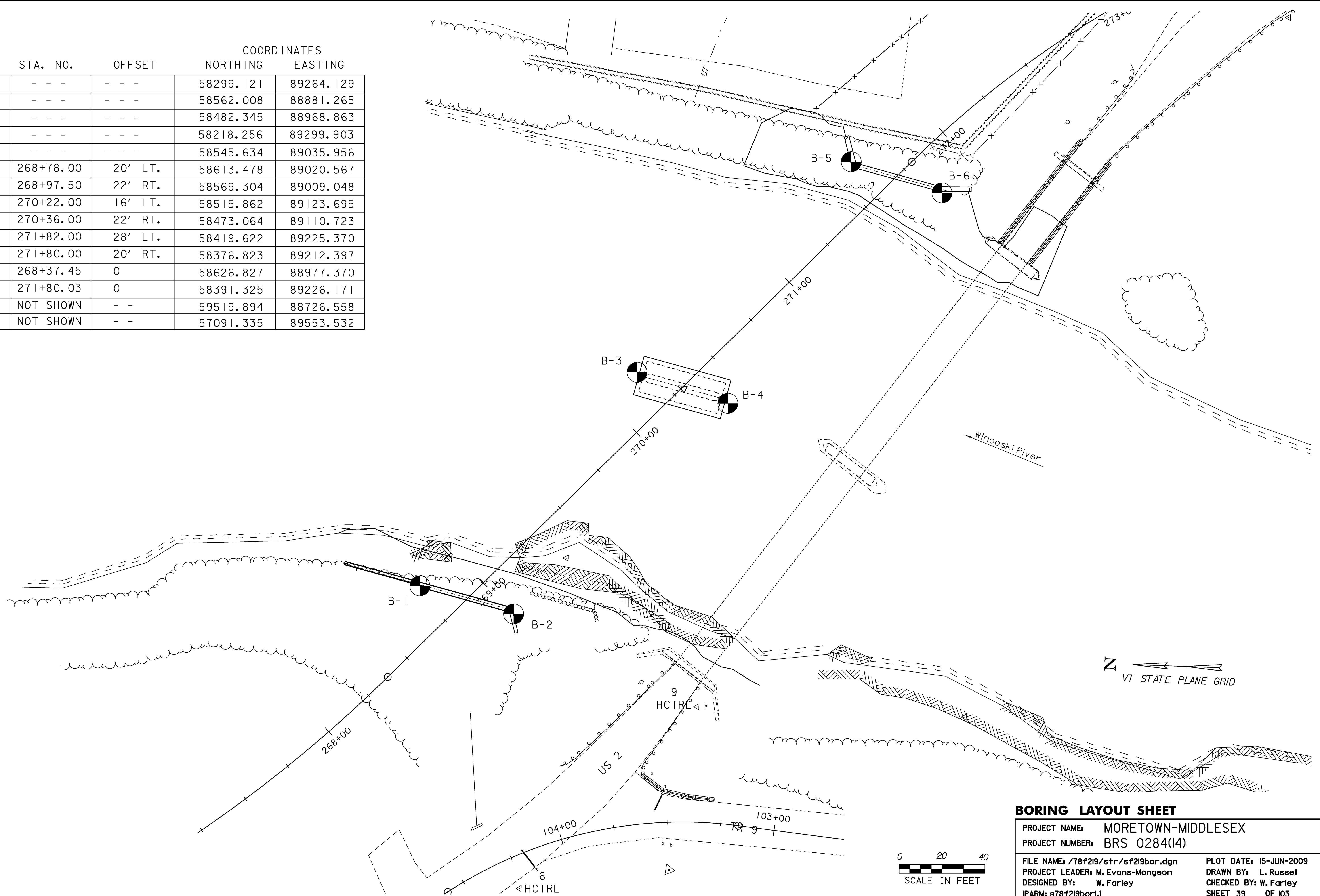


POINT	STA. NO.	OFFSET	COORDINATES	
			NORTHING	EASTING
5 HCTRL	- - -	- - -	58299.121	89264.129
6 HCTRL	- - -	- - -	58562.008	88881.265
9 HCTRL	- - -	- - -	58482.345	88968.863
10 HCTRL	- - -	- - -	58218.256	89299.903
101 HCTRL	- - -	- - -	58545.634	89035.956
B-1	268+78.00	20' LT.	58613.478	89020.567
B-2	268+97.50	22' RT.	58569.304	89009.048
B-3	270+22.00	16' LT.	58515.862	89123.695
B-4	270+36.00	22' RT.	58473.064	89110.723
B-5	271+82.00	28' LT.	58419.622	89225.370
B-6	271+80.00	20' RT.	58376.823	89212.397
PT	268+37.45	0	58626.827	88977.370
PC	271+80.03	0	58391.325	89226.171
BM 1000	NOT SHOWN	- -	59519.894	88726.558
BM 3768	NOT SHOWN	- -	57091.335	89553.532



BORING LAYOUT SHEET

PROJECT NAME: MORETOWN-MIDDLESEX
PROJECT NUMBER: BRS 0284(I4)

FILE NAME: /78f219/str/sf219bor.dgn
PROJECT LEADER: M. Evans-Mongeon
DESIGNED BY: W. Farley
IPARM: s78f219bor.l

PLOT DATE: 15-JUN-2009
DRAWN BY: L. Russell
CHECKED BY: W. Farley
SHEET 39 OF 103