

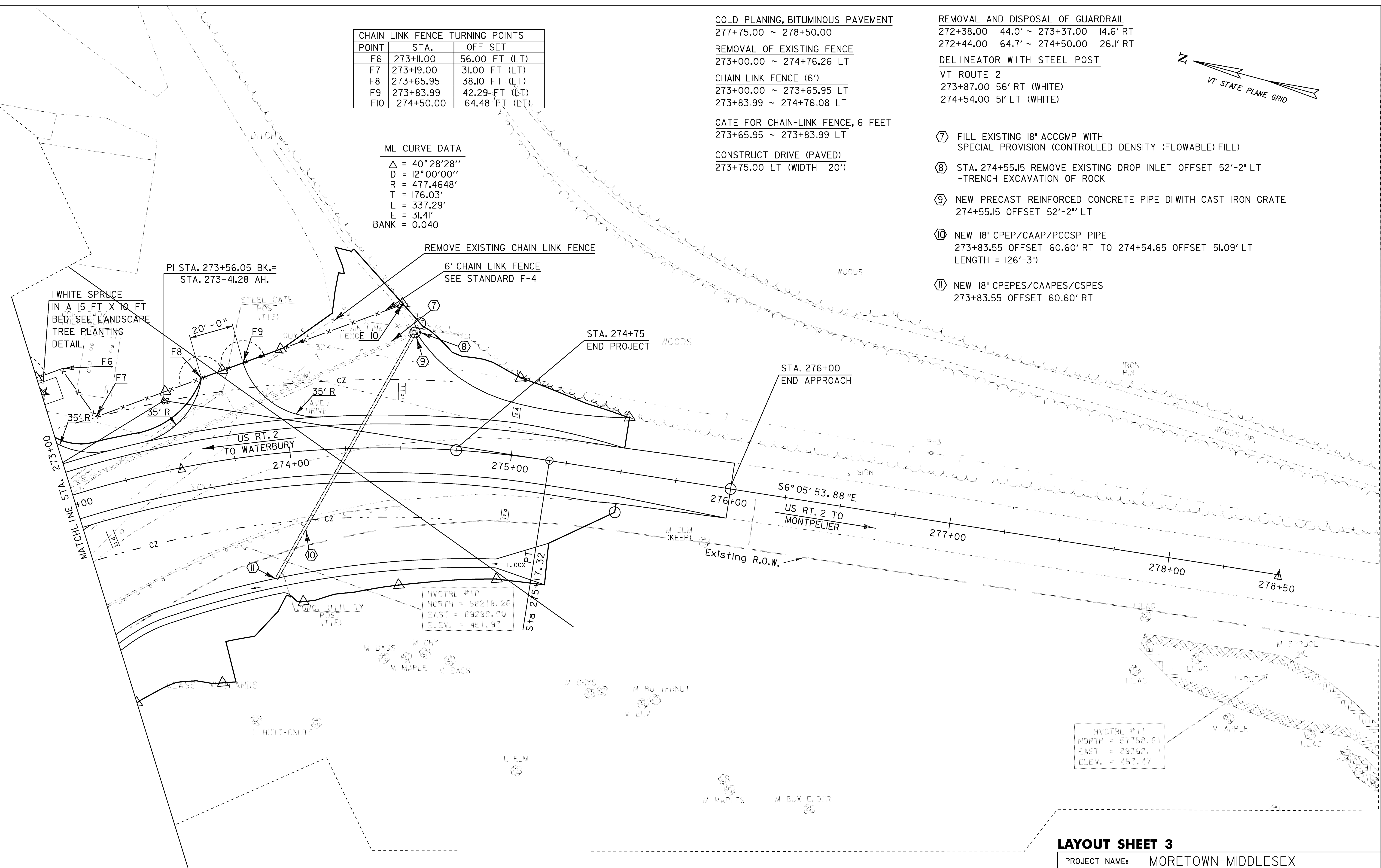
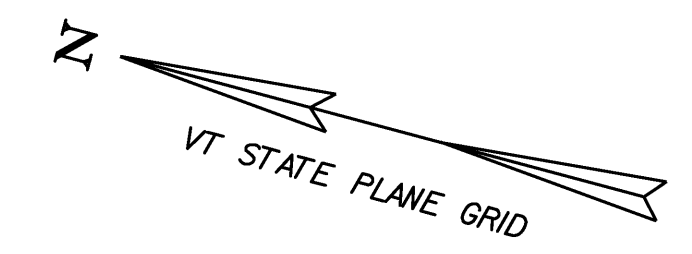
CHAIN LINK FENCE TURNING POINTS		
POINT	STA.	OFF SET
F6	273+11.00	56.00 FT (LT)
F7	273+19.00	31.00 FT (LT)
F8	273+65.95	38.10 FT (LT)
F9	273+83.99	42.29 FT (LT)
F10	274+50.00	64.48 FT (LT)

ML CURVE DATA
 $\Delta = 40^\circ 28' 28''$
 $D = 12^\circ 00' 00''$
 $R = 477.4648'$
 $T = 176.03'$
 $L = 337.29'$
 $E = 31.41'$
 $BANK = 0.040$

COLD PLANING, BITUMINOUS PAVEMENT
 277+75.00 ~ 278+50.00
 REMOVAL OF EXISTING FENCE
 273+00.00 ~ 274+76.26 LT
 CHAIN-LINK FENCE (6')
 273+00.00 ~ 273+65.95 LT
 273+83.99 ~ 274+76.08 LT
 GATE FOR CHAIN-LINK FENCE, 6 FEET
 273+65.95 ~ 273+83.99 LT
 CONSTRUCT DRIVE (PAVED)
 273+75.00 LT (WIDTH 20')

REMOVAL AND DISPOSAL OF GUARDRAIL
 272+38.00 44.0' ~ 273+37.00 14.6' RT
 272+44.00 64.7' ~ 274+50.00 26.1' RT
 DELINEATOR WITH STEEL POST
 VT ROUTE 2
 273+87.00 56' RT (WHITE)
 274+54.00 51' LT (WHITE)

- (7) FILL EXISTING 18" ACCGMP WITH SPECIAL PROVISION (CONTROLLED DENSITY (FLOWABLE) FILL)
- (8) STA. 274+55.15 REMOVE EXISTING DROP INLET OFFSET 52'-2" LT -TRENCH EXCAVATION OF ROCK
- (9) NEW PRECAST REINFORCED CONCRETE PIPE DI WITH CAST IRON GRATE 274+55.15 OFFSET 52'-2" LT
- (10) NEW 18" CPEP/CAAP/PCCSP PIPE 273+83.55 OFFSET 60.60' RT TO 274+54.65 OFFSET 51.09' LT LENGTH = 126'-3"
- (11) NEW 18" CPEPES/CAAPES/CPSPES 273+83.55 OFFSET 60.60' RT



HVCTRL #10
 NORTH = 58218.26
 EAST = 89299.90
 ELEV. = 451.97

HVCTRL #11
 NORTH = 57758.61
 EAST = 89362.17
 ELEV. = 457.47

LAYOUT SHEET 3

PROJECT NAME: MORETOWN-MIDDLESEX
 PROJECT NUMBER: BRS 0284(14)

FILE NAME: 78f219\structures\78f219bdr.dgn PLOT DATE: 15-JUN-2009
 PROJECT LEADER: M. Evans-Mongeon DRAWN BY: L. DUQUETTE
 DESIGNED BY: S.SCRIBNER CHECKED BY: S. SCRIBNER
 IPARM: s78f2193.1 SHEET 14 OF 103

