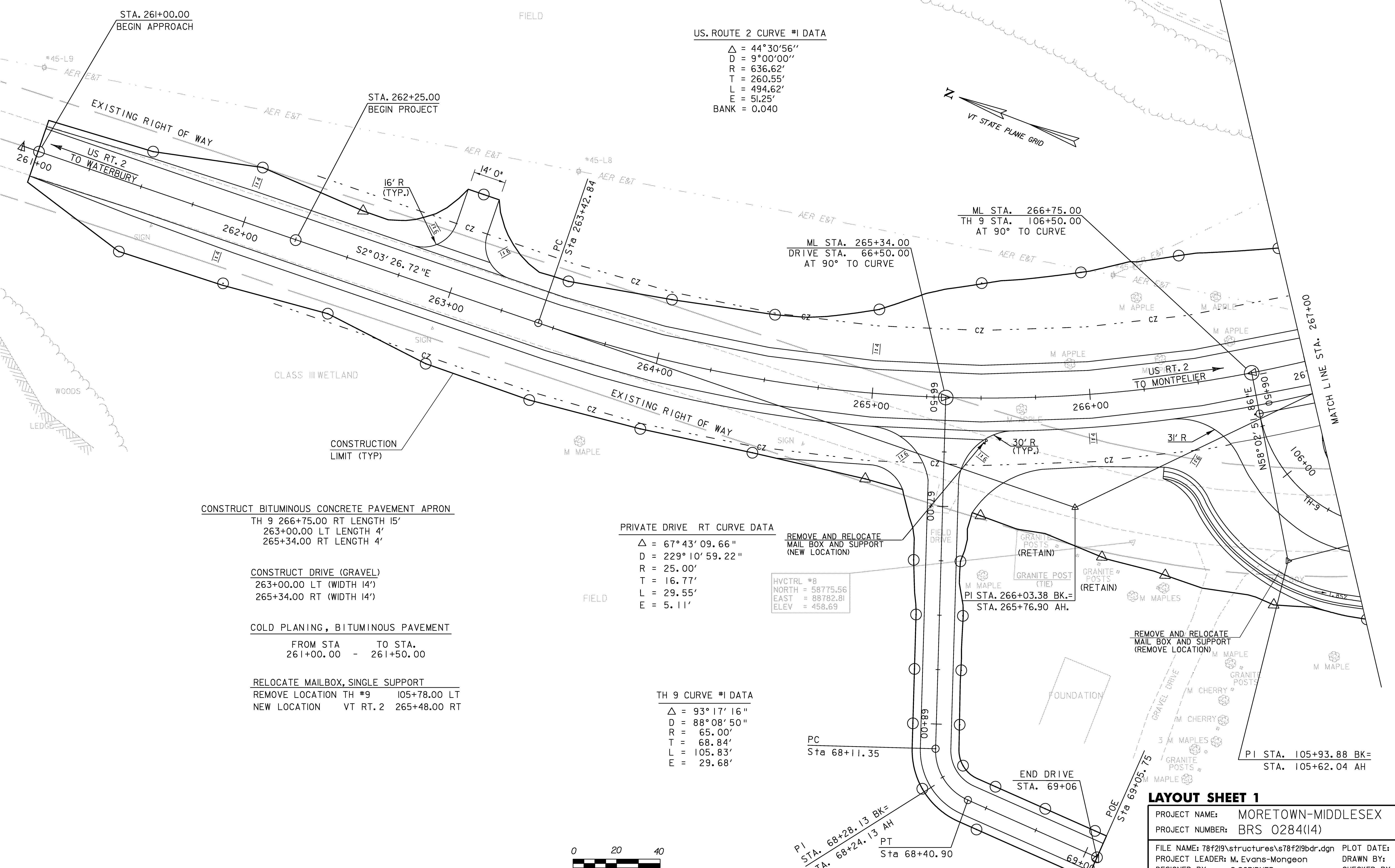
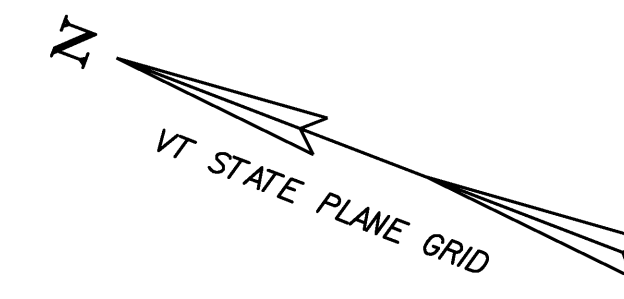


US. ROUTE 2 CURVE #1 DATA

Δ = 44°30'56"
 D = 9°00'00"
 R = 636.62'
 T = 260.55'
 L = 494.62'
 E = 51.25'
 BANK = 0.040



CONSTRUCT BITUMINOUS CONCRETE PAVEMENT APRON
 TH 9 266+75.00 RT LENGTH 15'
 263+00.00 LT LENGTH 4'
 265+34.00 RT LENGTH 4'

CONSTRUCT DRIVE (GRAVEL)
 263+00.00 LT (WIDTH 14')
 265+34.00 RT (WIDTH 14')

COLD PLANING, BITUMINOUS PAVEMENT
 FROM STA TO STA.
 261+00.00 - 261+50.00

RELOCATE MAILBOX, SINGLE SUPPORT
 REMOVE LOCATION TH #9 105+78.00 LT
 NEW LOCATION VT RT. 2 265+48.00 RT

PRIVATE DRIVE RT CURVE DATA

Δ = 67°43'09.66"
 D = 229°10'59.22"
 R = 25.00'
 T = 16.77'
 L = 29.55'
 E = 5.11'

REMOVE AND RELOCATE
 MAIL BOX AND SUPPORT
 (NEW LOCATION)

HVCTRL #8
 NORTH = 58775.56
 EAST = 88782.81
 ELEV = 458.69

TH 9 CURVE #1 DATA

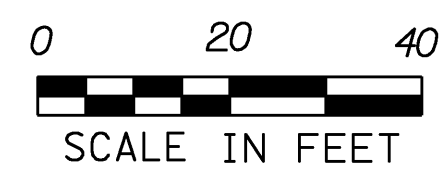
Δ = 93°17'16"
 D = 88°08'50"
 R = 65.00'
 T = 68.84'
 L = 105.83'
 E = 29.68'

PC
 Sta 68+11.35

END DRIVE
 STA. 69+06

PI STA. 68+28.13 BK=
 STA. 68+24.13 AH
 PT
 Sta 68+40.90

PI STA. 105+93.88 BK=
 STA. 105+62.04 AH



LAYOUT SHEET 1

PROJECT NAME: MORETOWN-MIDDLESEX
 PROJECT NUMBER: BRS 0284(14)

FILE NAME: 78f219\structures\78f219bdr.dgn PLOT DATE: 15-JUN-2009
 PROJECT LEADER: M. Evans-Mongeon DRAWN BY: L. DUQUETTE
 DESIGNED BY: S.SCRIBNER CHECKED BY: S. SCRIBNER
 IPARM: s78f219i1.i SHEET 12 OF 103