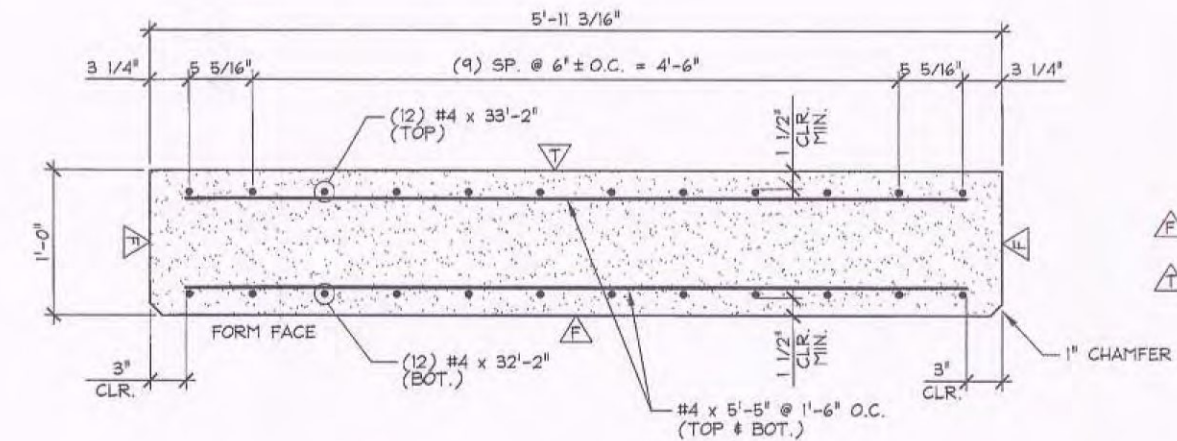
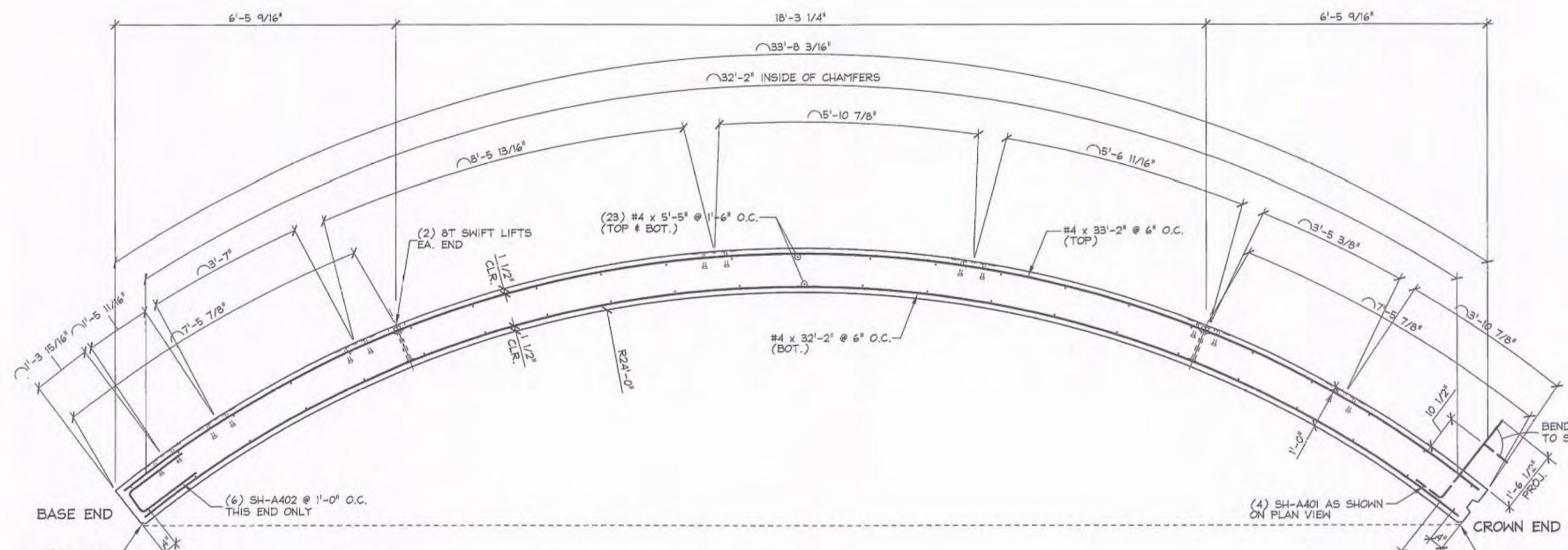


1 ARCH PANEL PLAN IN FORM W/ REINF.
1/2" = 1'-0"



A ARCH PANEL REINFORCEMENT SECTION
1/2" = 1'-0"



B ARCH PANEL REINFORCEMENT SECTION
1/2" = 1'-0"

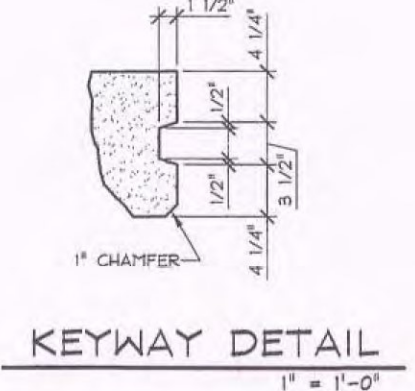
SHOP DRAWING REVIEW

REVIEWED AS SHOWN BY THE CONSTRUCTION CONTRACT DOCUMENTS AND APPROVED, BUT ONLY FOR CONFORMANCE TO THE DESIGN CONCEPT OF THE WORK, AND SUBJECT TO FURTHER LIGHTING AND REQUIREMENTS CONTAINED IN THE CONSTRUCTION CONTRACT DOCUMENTS.

REFLECTED REVISE AND RESUBMIT FINISH AS CORRECTED

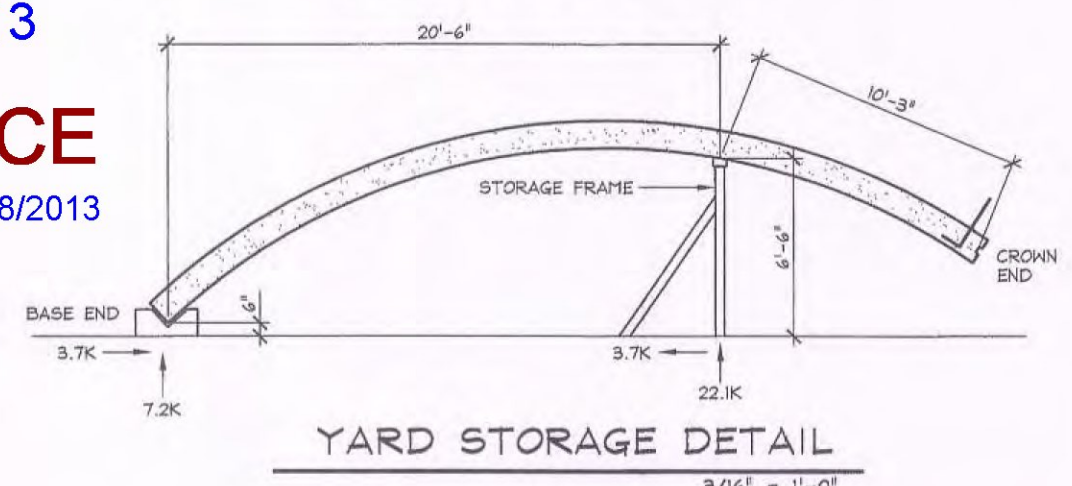
CONTRACTOR OR COMMENTS MADE ON THE SHOP DRAWINGS DURING THE REVIEW DO NOT RELIEVE CONTRACTOR FROM COMPLIANCE WITH REQUIREMENTS OF THE DRAWINGS AND SPECIFICATIONS. THIS CHECK IS ONLY FOR REVIEW OF GENERAL CONFORMANCE WITH THE DESIGN CONCEPT OF THE PROJECT AND GENERAL COORDINATION WITH THE INFORMATION GIVEN IN THE CONTRACT DOCUMENTS. THE CONTRACTOR IS RESPONSIBLE FOR COORDINATING AND CORRECTING ALL QUANTITIES AND CONDITIONS, SELECTING FABRICATION PROCESSES AND TECHNIQUES OF CONSTRUCTION, COORDINATING THE WORK WITH THAT OF ALL OTHER TRADES, AND PERFORMING HIS WORK IN A SAFE AND SATISFACTORY MANNER.

VHB
Vermont Highway Builders, Inc.
Reviewed By: *[Signature]*
Date: 12/17/13

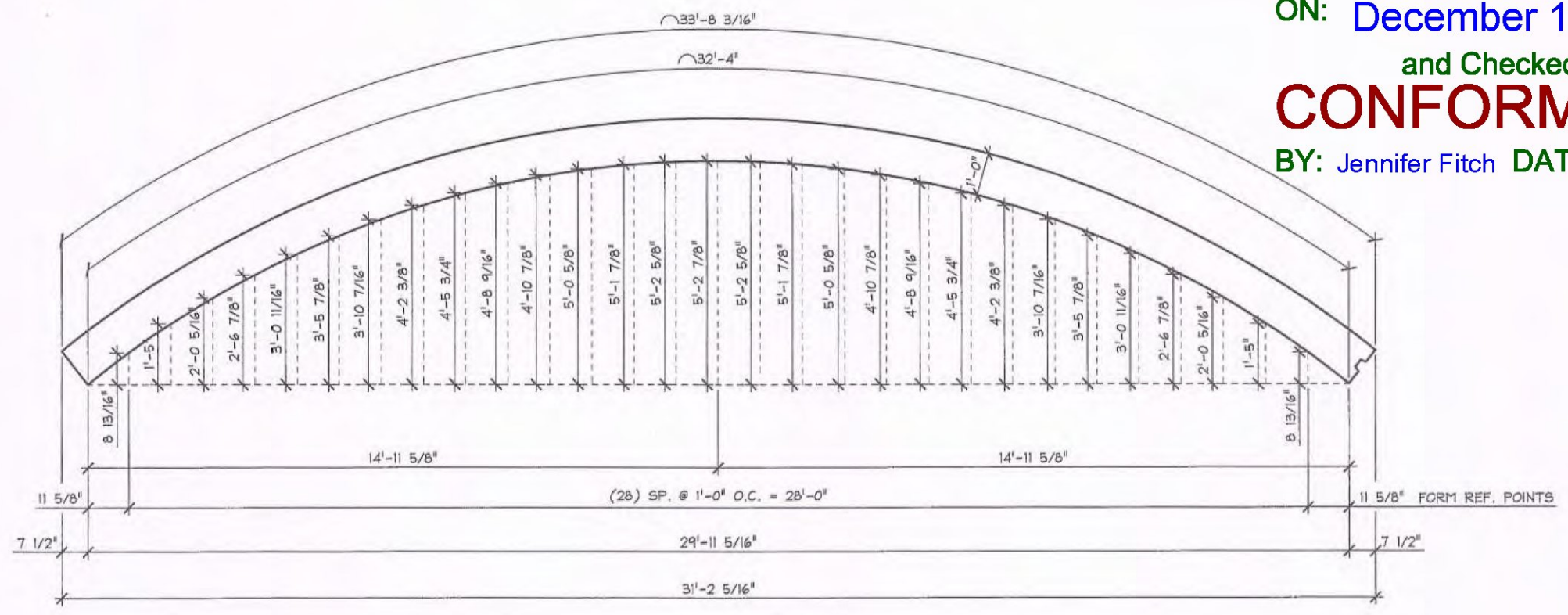


KEYWAY DETAIL
1" = 1'-0"

- HANDLING NOTES:**
1. ARCH PANEL SHALL BE HANDLED USING (4) 8T x 10' SL ANCHORS AT FIFTH POINTS.
 2. ARCH PANEL SHALL BE STRIPPED USING (4) 8T x 10' SL ANCHORS.
 3. FOR YARD STORAGE ARCH PANEL SHALL BE LOWERED USING (4) 8T x 10' SL ANCHORS UNTIL PANEL CONTACTS THE STORAGE FRAME. PLACED 10'-3" FROM THE PANEL END AS SHOWN. THE BASE OF THE PANEL SHALL THEN BE LOWERED TO THE HARDWOOD SUPPORT.
 4. THE PANEL SHALL BE HOISTED FROM THE STORAGE POSITION IN THE REVERSE SEQUENCE SPECIFIED ABOVE.
 5. THE ARCH PANEL SHALL BE SHIPPED WITH A SUPPORT CONFIGURATION MATCHING THE YARD STORAGE DETAIL AND SHALL BE INSTALLED FOLLOWING THE ABOVE PROCEDURE, USING (4) 8T x 10' SL ANCHORS.

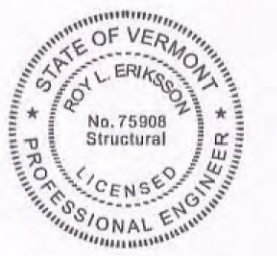


YARD STORAGE DETAIL
3/16" = 1'-0"



ARCH PANEL ELEV. IN FORM
3/8" = 1'-0"

Vermont Agency of Transportation
RECEIVED
ON: December 16, 2013
and Checked for
CONFORMANCE
BY: Jennifer Fitch DATE: 12/18/2013



Jennifer Fitch
12.16.13

12-16-13 GENERAL REVISION T.D.

4000 PSI @ RELEASE
6000 PSI @ 28 DAYS

FIX DESIGN: 4851 NO DG
FIX DESIGN: 4251 NO DG

SUBMITTED
DEC 16 2013
J.P. CARRARA & SONS, INC.
MIDDLEBURY, VT 05753

NOTE:
EITHER OR BOTH OF THE ABOVE APPROVED FIX DESIGNS SHALL BE USED IN FABRICATION. RECORDS AND TESTING SHALL BE IN ACCORDANCE WITH I.P.C. 6091 AND VT. ACT SPECIFICATION.

MARK: SH-AR4	QTY.: 1	WT.: 14.93 T	VOL.: 7.37 cy
MATERIAL LIST / ARCH PANEL			
ITEM	MARK	DESCRIPTION	QTY.
1	#4 x 33'-2"	BLACK	12
2	#4 x 32'-2"	BLACK	12
3	#4 x 5'-5"	BLACK	46
4			
5	SH-A40	#4 BENT BAR BLACK	4
6	SH-A402	#4 BENT BAR BLACK	6
7	PK-API	E 3/8" x 3' x 1'-0" W/ (2) 5/8" x 3' HS (GALV.)	7
8			
9			
10		DAYTON 8T x 10' SHIFTS LIFT ANCH. (BLACK) (WITH RECESS PLUG)	4
11			
12			
13			
14			
15			

APPROVAL STAMP:

J.P. CARRARA & SONS, INC.
Precast & Prestress Manufacturer
284 ONE ETL WOODSIDE, VERMONT 05753 Phone: (802)388-6361 Fax: (802)388-9010

T. BUCK CONSTRUCTION
CONTRACTOR
AUBURN, MAINE

STATE OF VERMONT AGENCY OF TRANSPORTATION
COUNTY OF ADDISON

TOWN OF MIDDLEBURY
ROUTE NO. VT 125, EAST MIDDLEBURY GORGE
BRIDGE NO. 1 PROJECT NO.: RS 0174(8)

DATE: OCT. 9, 2013
SCALE: NOTED
CHKD: DFTM: T.D.
JOB NO:
DWG. NO: AR4

PRECAST ARCH PANEL DETAILS