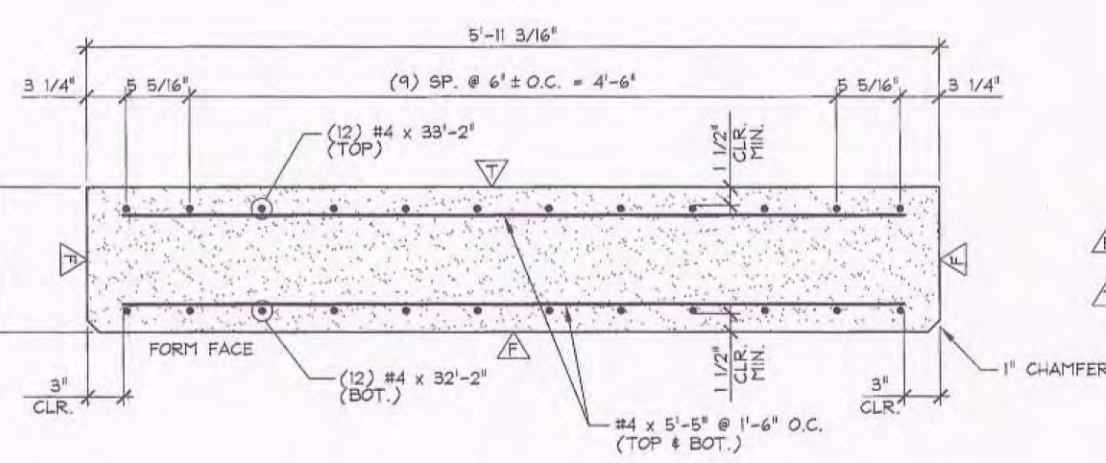
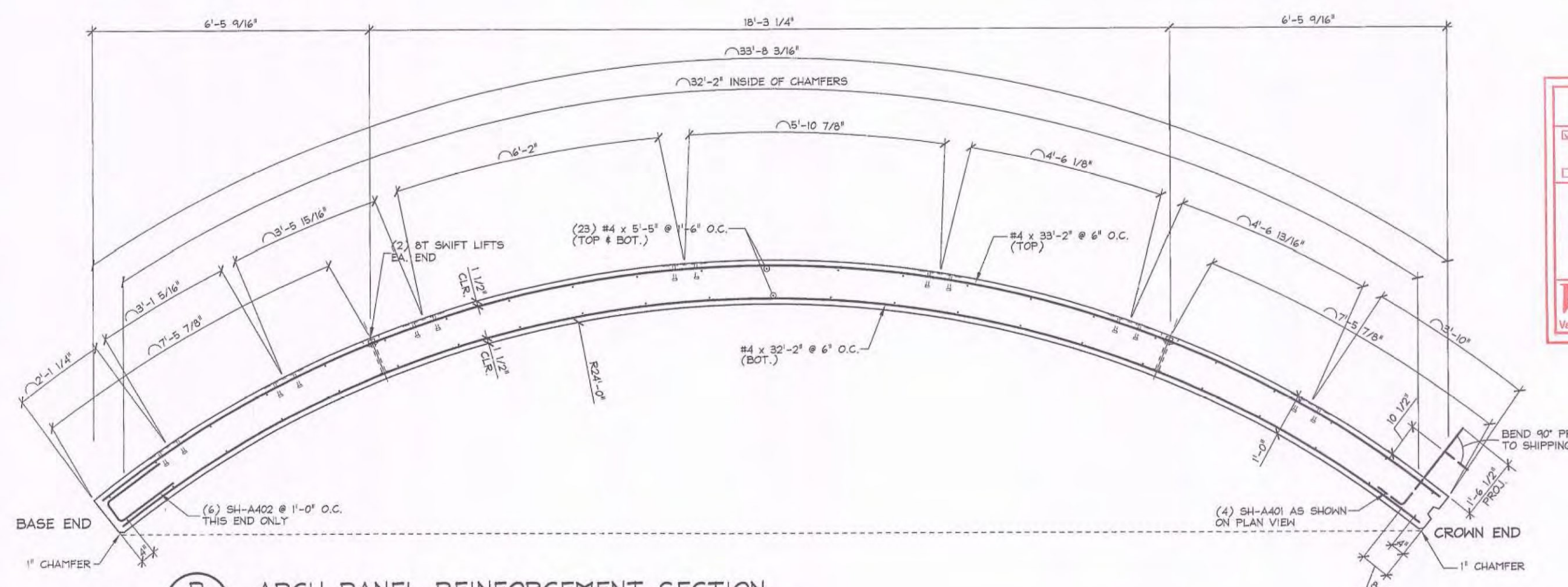


1 ARCH PANEL PLAN IN FORM W/ REINF.
1/2" = 1'-0"



A ARCH PANEL REINFORCEMENT SECTION
1/2" = 1'-0"



B ARCH PANEL REINFORCEMENT SECTION
1/2" = 1'-0"

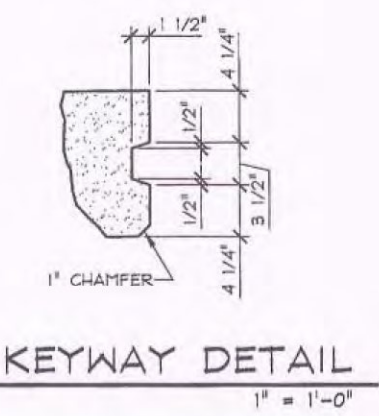
SHOP DRAWING REVIEW

REVIEWED AS REQUIRED BY THE CONSTRUCTION CONTRACT DOCUMENTS AND APPROVED, BUT ONLY FOR CONFORMANCE TO THE DESIGN CONCEPT OF THE WORK, AND SUBJECT TO FURTHER LIMITATIONS AND REQUIREMENTS CONTAINED IN THE CONSTRUCTION CONTRACT DOCUMENTS.

REJECTED REVISE AND RESUBMIT FURNISH AS CORRECTED

CONTRACTOR OR CONTRACTOR BASED ON THE SHOP DRAWINGS DURING THE REVIEW TO RELIEVE CONTRACTOR FROM COMPLIANCE WITH REQUIREMENTS OF THE DRAWINGS AND SPECIFICATIONS. THIS CHECK IS ONLY FOR REVIEW OF GENERAL CONFORMANCE WITH THE DESIGN CONCEPT OF THE PROJECT AND GENERAL CONFORMANCE WITH THE INFORMATION GIVEN IN THE CONTRACT DOCUMENTS. THE CONTRACTOR IS RESPONSIBLE FOR CONFORMANCE AND CORRECTING ALL DEFICIENCIES AND OMISSIONS, INCLUDING IMPROVED PROCEDURES AND TECHNIQUES OF CONSTRUCTION, COORDINATING HIS WORK WITH THAT OF ALL OTHER TRADES, AND PERFORMING HIS WORK IN A SAFE AND MANNER CONFORMING TO THE CONTRACT DOCUMENTS.

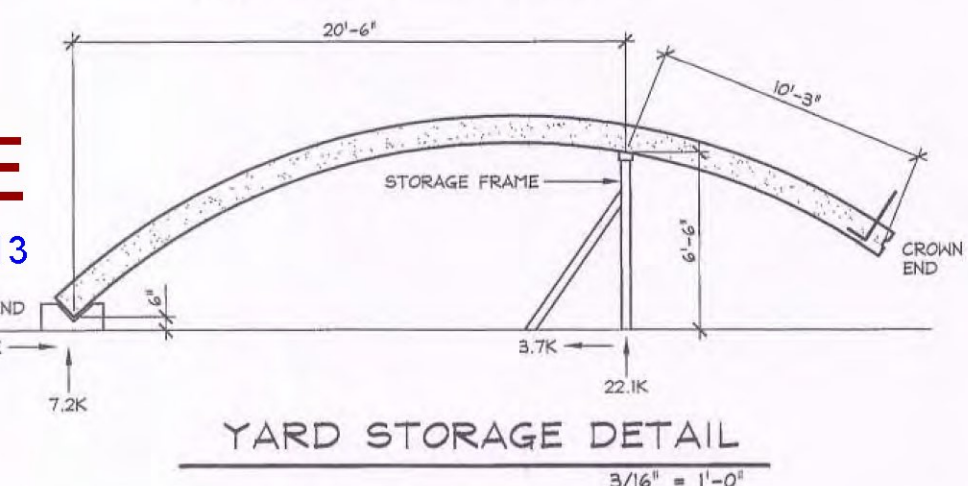
VHB
Vermont Hanger Brackets, Inc.
Job Number: 2743 E. 06
Reviewed By: C.S. - S. Green - 24
Date: 12/17/13



KEYWAY DETAIL
1" = 1'-0"

HANDLING NOTES:

1. ARCH PANEL SHALL BE HANDLED USING (4) 8T x 10' SL ANCHORS AT FIFTH POINTS.
2. ARCH PANELS SHALL BE STRIPPED USING (4) 8T x 10' SL ANCHORS.
3. FOR YARD STORAGE, ARCH PANEL SHALL BE LOWERED USING (4) 8T x 10' SL ANCHORS UNTIL PANEL CONTACTS THE STORAGE FRAME, PLACED 10'-3" FROM THE PANEL END AS SHOWN. THE BASE OF THE PANEL SHALL THEN BE LOWERED TO THE HARDWOOD SUPPORT.
4. THE PANEL SHALL BE HOISTED FROM THE STORAGE POSITION IN THE REVERSE SEQUENCE SPECIFIED ABOVE.
5. THE ARCH PANEL SHALL BE SHIPPED WITH A SUPPORT CONFIGURATION MATCHING THE "YARD STORAGE DETAIL" AND SHALL BE INSTALLED FOLLOWING THE ABOVE PROCEDURE, USING (4) 8T x 10' SL ANCHORS.



YARD STORAGE DETAIL
3/16" = 1'-0"

4000 PSI # RELEASE
6500 PSI # 28 DAYS

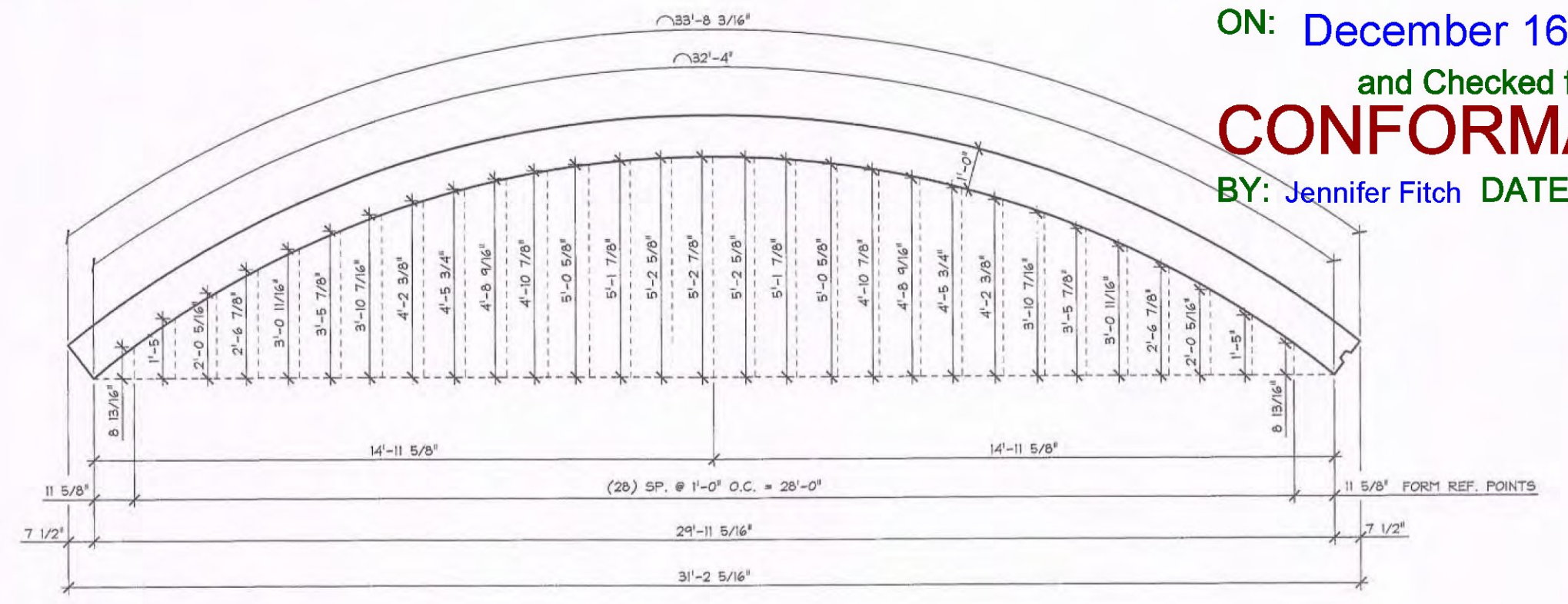
FIX DESIGN: 468H NO DCI
FIX DESIGN: 426H NO DCI

SUBMITTED
DEC 16 2013
J.P. CARRARA & SONS, INC.
MIDDLEBURY, VT 05753

NOTE:
EITHER OR BOTH OF THE ABOVE APPROVED FIX DESIGNS SHALL BE USED IN FABRICATION. RECORDS AND TESTING SHALL BE IN ACCORDANCE WITH J.P.C. GSH AND VT ACT SPECIFICATION.

MARK: SH-AR2 QTY.: 1 WT.: 14.93 T VOL.: 7.37 cy

MATERIAL LIST / ARCH PANEL			
ITEM	MARK	DESCRIPTION	QTY.
1		#4 x 33'-2" BLACK	12
2		#4 x 32'-2" BLACK	12
3		#4 x 5'-5" BLACK	46
4			
5	SH-A40	#4 BENT BAR BLACK	4
6	SH-A402	#4 BENT BAR BLACK	6
7			
8	TK-API	2 5/8" x 3' x 1'-0" HV (2) 5/8" x 3' HS (GALV.)	7
9			
10		DAYTON 8T40' SHIFTS LIFT ANCH. (BLACK) (WITH RECESS PLUG)	4
11			
12			
13			
14			
15			



ARCH PANEL ELEV. IN FORM
3/8" = 1'-0"

Vermont Agency of Transportation
RECEIVED
ON: December 16, 2013
and Checked for
CONFORMANCE
BY: Jennifer Fitch DATE: 12/18/2013



APPROVAL STAMP:

J.P. Carrara & Sons Inc.
Precast & Prestress Manufacturer
284 GUE ST., MIDDLEBURY, VERMONT 05753 Phone: (802)338-6361 Fax: (802)338-9010

T. BUCK CONSTRUCTION
CONTRACTOR
AUBURN, MAINE

STATE OF VERMONT AGENCY OF TRANSPORTATION
COUNTY OF ADDISON

TOWN OF MIDDLEBURY
ROUTE NO. VT 125, EAST MIDDLEBURY GORGE
BRIDGE NO.: PROJECT NO.: RS 0174(8)

PRECAST ARCH PANEL DETAILS
DWG. NO: AR2

DATE: OCT. 9, 2013
SCALE: NOTED
CHKD: DFTM: T.D.
JOB NO:
DWC. NO: AR2