

Vermont Agency of Transportation

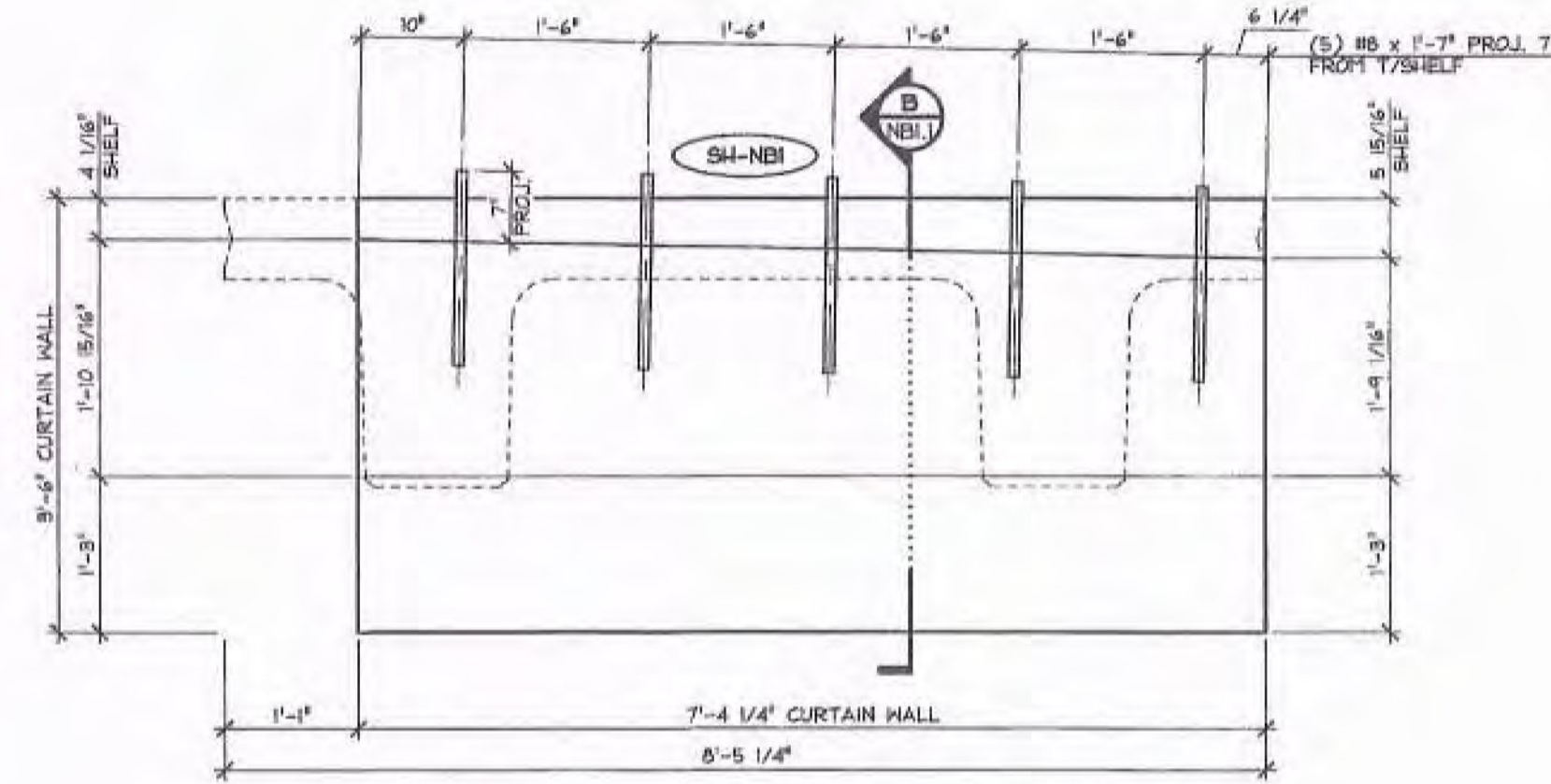
RECEIVED

ON: February 12, 2014

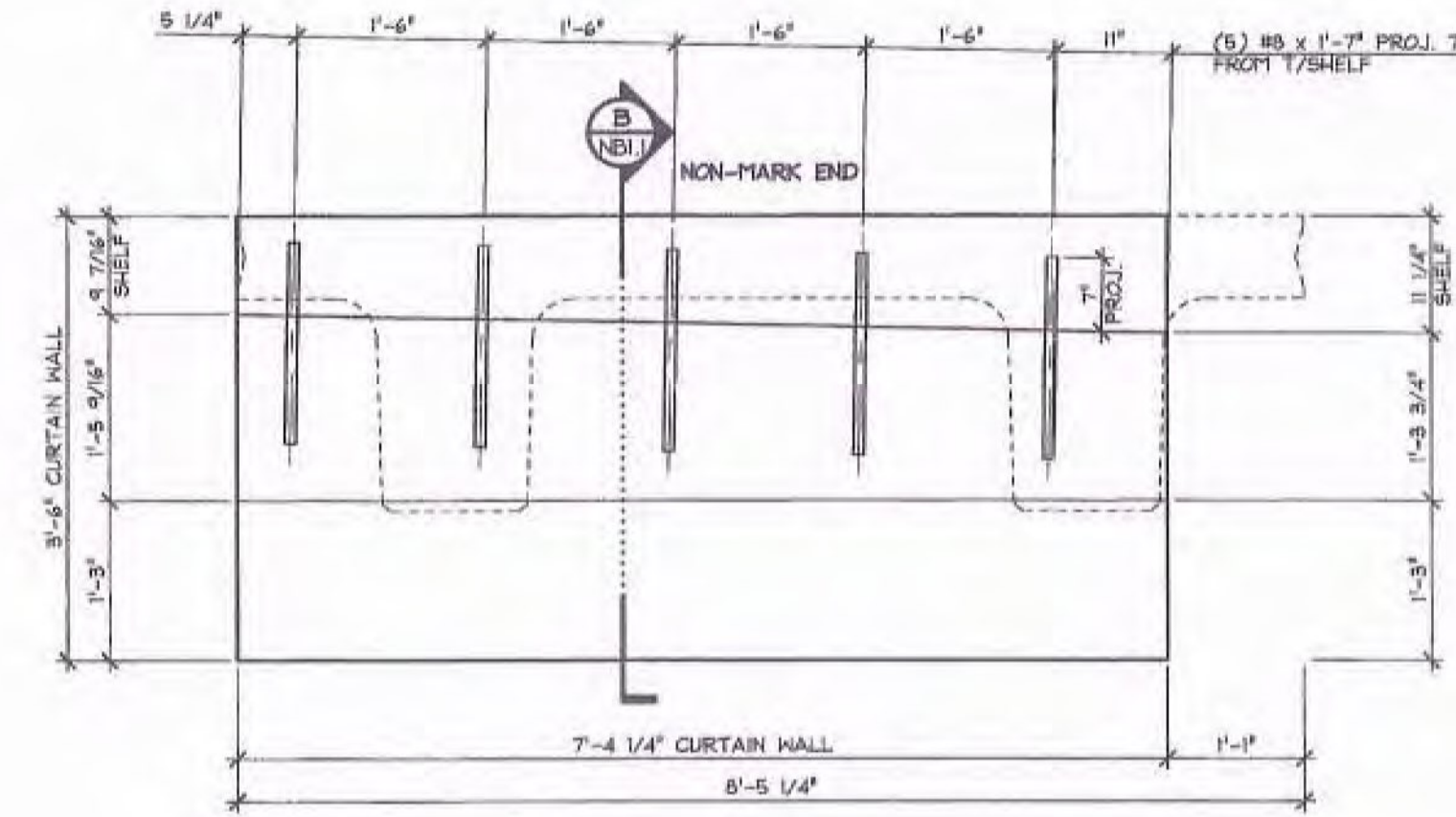
and Checked for

CONFORMANCE

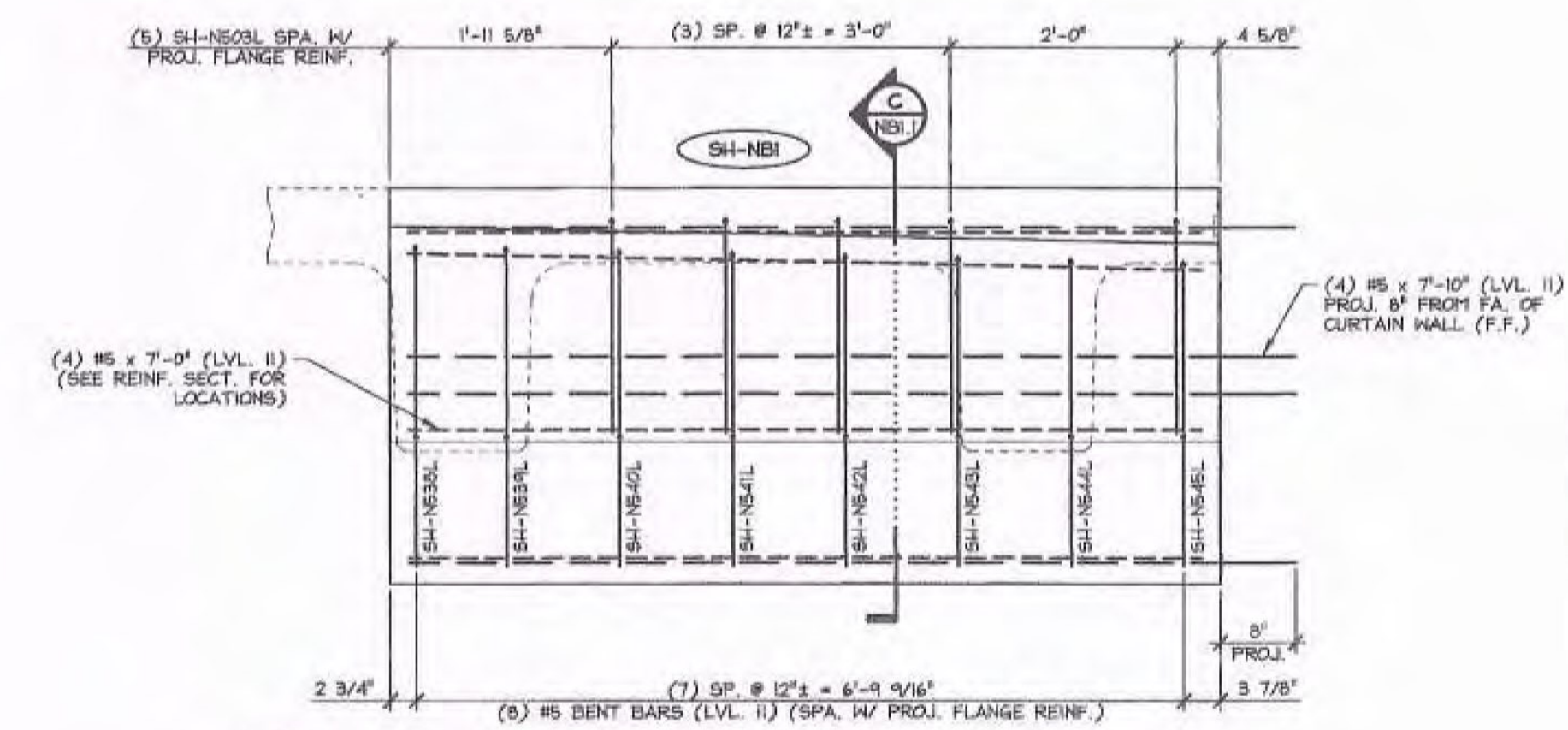
BY: Jennifer Fitch DATE: 02/27/14



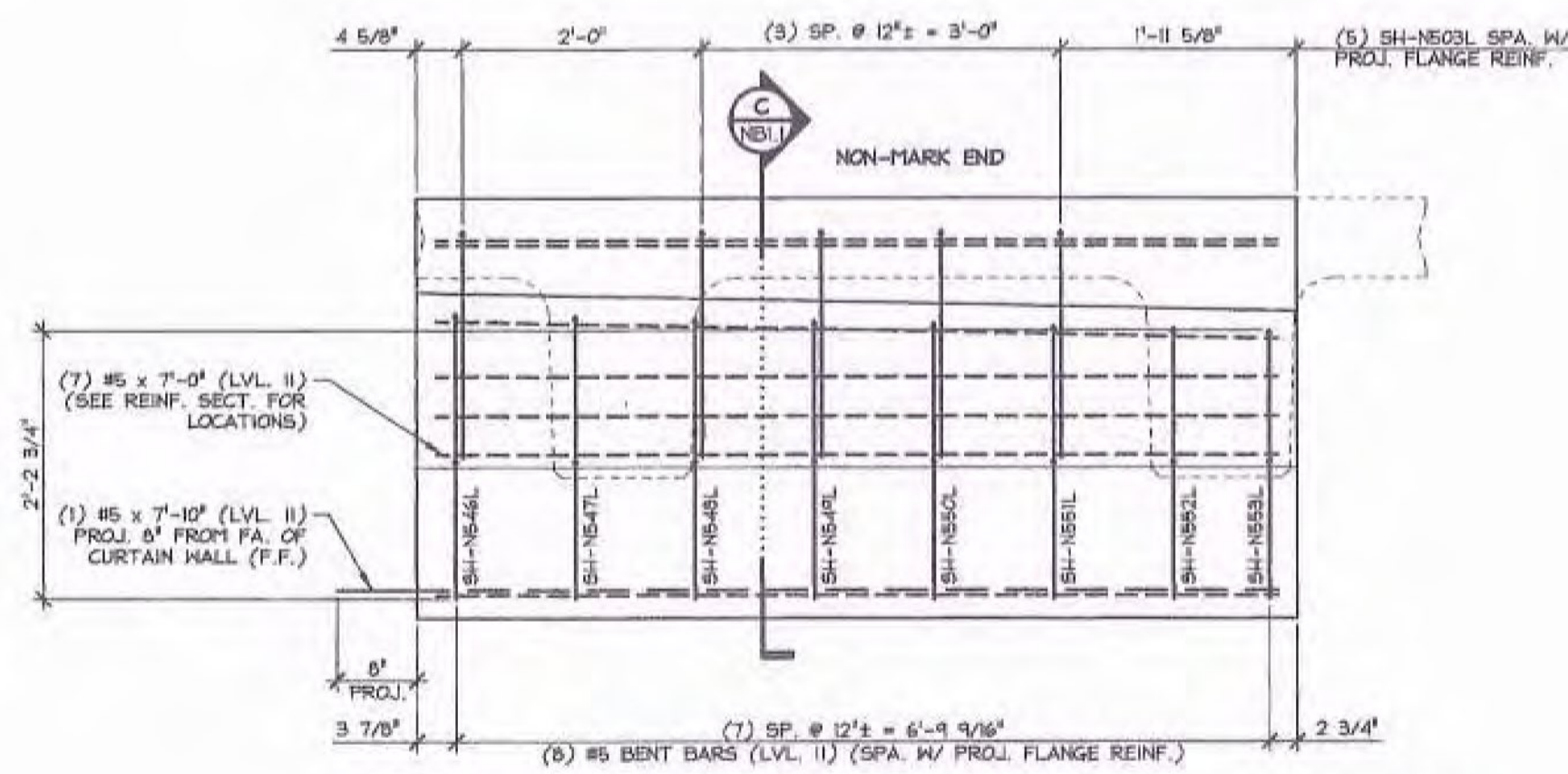
1 CURTAIN WALL DIMENSIONAL ELEVATION
NB4.1 VOL. 1, 1.86 cy WT. 3.77 T 3/4" = 1'-0"



3 CURTAIN WALL DIMENSIONAL ELEVATION
NB4.1 VOL. 1, 1.86 cy WT. 3.92 T 3/4" = 1'-0"



2 CURTAIN WALL DIMENSIONAL ELEVATION
NB4.1 3/4" = 1'-0"



4 CURTAIN WALL DIMENSIONAL ELEVATION
NB4.1 3/4" = 1'-0"

SHOP DRAWING REVIEW

REVIEWED AS REQUIRED BY THE CONSTRUCTION CONTRACT DOCUMENTS AND APPROVED, BUT ONLY FOR CONFORMANCE TO THE DESIGN CONCEPT OF THE WORK, AND SUBJECT TO FURTHER LIMITATIONS AND REQUIREMENTS CONTAINED IN THE CONSTRUCTION CONTRACT DOCUMENTS.

REJECTED REVISE AND RESUBMIT FURNISH AS CORRECTED

CORRECTIONS OR COMMENTS MADE ON THE SHOP DRAWINGS DURING THIS REVIEW DO NOT RELIEVE CONTRACTOR FROM COMPLIANCE WITH REQUIREMENTS OF THE DRAWINGS AND SPECIFICATIONS. THIS CHECK IS ONLY FOR REVIEW OF GENERAL CONFORMANCE WITH THE DESIGN CONCEPT OF THE PROJECT AND GENERAL COMPLIANCE WITH THE INFORMATION GIVEN IN THE CONTRACT DOCUMENTS. THE CONTRACTOR IS RESPONSIBLE FOR CONFIRMING AND CORRELATING ALL QUANTITIES AND DIMENSIONS, SELECTING FABRICATION PROCESSES AND TECHNIQUES OF CONSTRUCTION, COORDINATING HIS WORK WITH THAT OF ALL OTHER TRADES, AND PERFORMING HIS WORK IN A SAFE AND SATISFACTORY MANNER.

VHB Vermont Hanger Division, Inc.
Job Number: 57438.00
Reviewed By: J. Moore
Date: 2-14-14

45.87 T = NEXT BEAM
3.77 T = CURTAIN WALL (MARK END)
3.92 T = CURTAIN WALL (NON-MARK END)
53.6 T = TOTAL BEAM WT.

SUBMITTED
FEB 12 2014
J.P. CARRARA & SONS, INC.
MIDDLEBURY, VT 05753

MARK: SH-NBI QTY: 1

MATERIAL LIST / CURTAIN WALL				
ITEM	MARK	DESCRIPTION	QTY./CURTAIN WALL	
			MARK END	NON-MARK END
1	SH-N503L	#5 BENT BAR (LEVEL II, DUAL COATED)	5	5
2	SH-N503R	#5 BENT BAR (LEVEL II, DUAL COATED)	1	
3	SH-N503L	#5 BENT BAR (LEVEL II, DUAL COATED)	1	
4	SH-N540L	#5 BENT BAR (LEVEL II, DUAL COATED)	1	
5	SH-N541L	#5 BENT BAR (LEVEL II, DUAL COATED)	1	
6	SH-N542L	#5 BENT BAR (LEVEL II, DUAL COATED)	1	
7	SH-N543L	#5 BENT BAR (LEVEL II, DUAL COATED)	1	
8	SH-N544L	#5 BENT BAR (LEVEL II, DUAL COATED)	1	
9	SH-N545L	#5 BENT BAR (LEVEL II, DUAL COATED)	1	
10	SH-N546L	#5 BENT BAR (LEVEL II, DUAL COATED)		1
11	SH-N547L	#5 BENT BAR (LEVEL II, DUAL COATED)		1
12	SH-N548L	#5 BENT BAR (LEVEL II, DUAL COATED)		1
13	SH-N549L	#5 BENT BAR (LEVEL II, DUAL COATED)		1
14	SH-N550L	#5 BENT BAR (LEVEL II, DUAL COATED)		1
15	SH-N551L	#5 BENT BAR (LEVEL II, DUAL COATED)		1
16	SH-N552L	#5 BENT BAR (LEVEL II, DUAL COATED)		1
17	SH-N553L	#5 BENT BAR (LEVEL II, DUAL COATED)		1
18		#5 x 7'-0" (LVL. II, DUAL COATED)	4	7
19		#5 x 7'-10" (LVL. II, DUAL COATED)	4	1
20				
21		#8 x 1'-7" (LEVEL II, DUAL COATED)	5	5
22				
23				
24				
25				

APPROVAL STAMP:

J.P. CARRARA & SONS INC.
Precast & Prestress Manufacturer
284 ONE SIX, MIDDLEBURY, VERMONT 05753 Phone: (802)338-6361 Fax: (802)338-9010

T. BUCK CONSTRUCTION
CONTRACTOR
AUBURN, MAINE

STATE OF VERMONT AGENCY OF TRANSPORTATION
COUNTY OF ADDISON

TOWN OF MIDDLEBURY
ROUTE NO. VT 125, EAST MIDDLEBURY GORGE
BRIDGE NO.: 13 PROJECT NO.: RS 0174(8)

DATE: OCT. 9, 2013
SCALE: NOTED
CHKD: DFTM: B.L.
JOB NO: 23411-013

PRECAST CURTAIN WALL DETAILS
DWG. NO: NB4.1