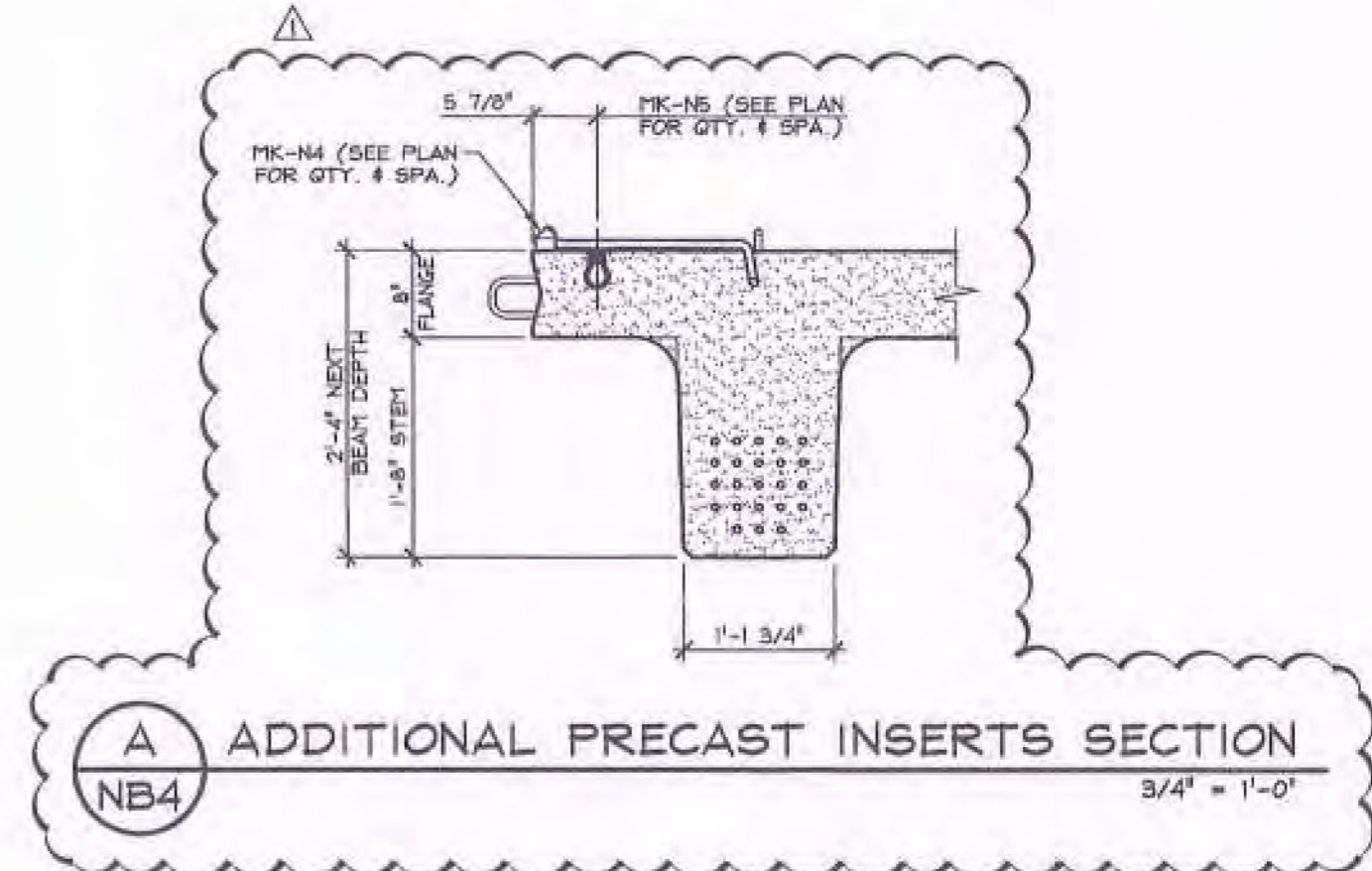
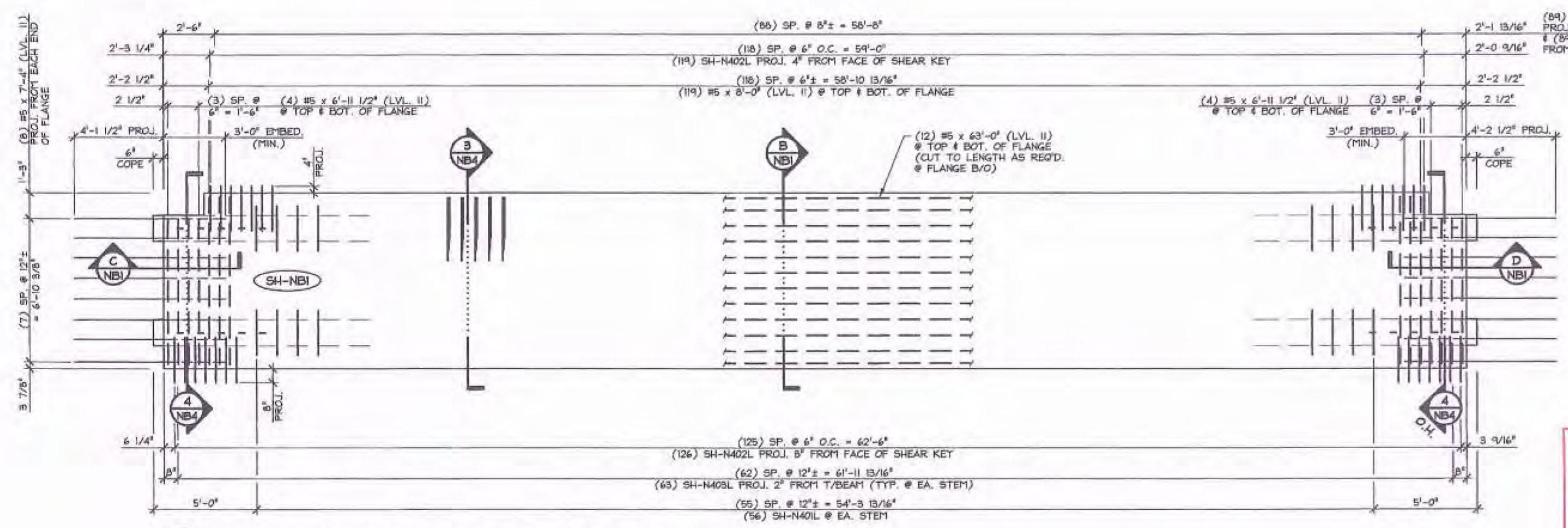


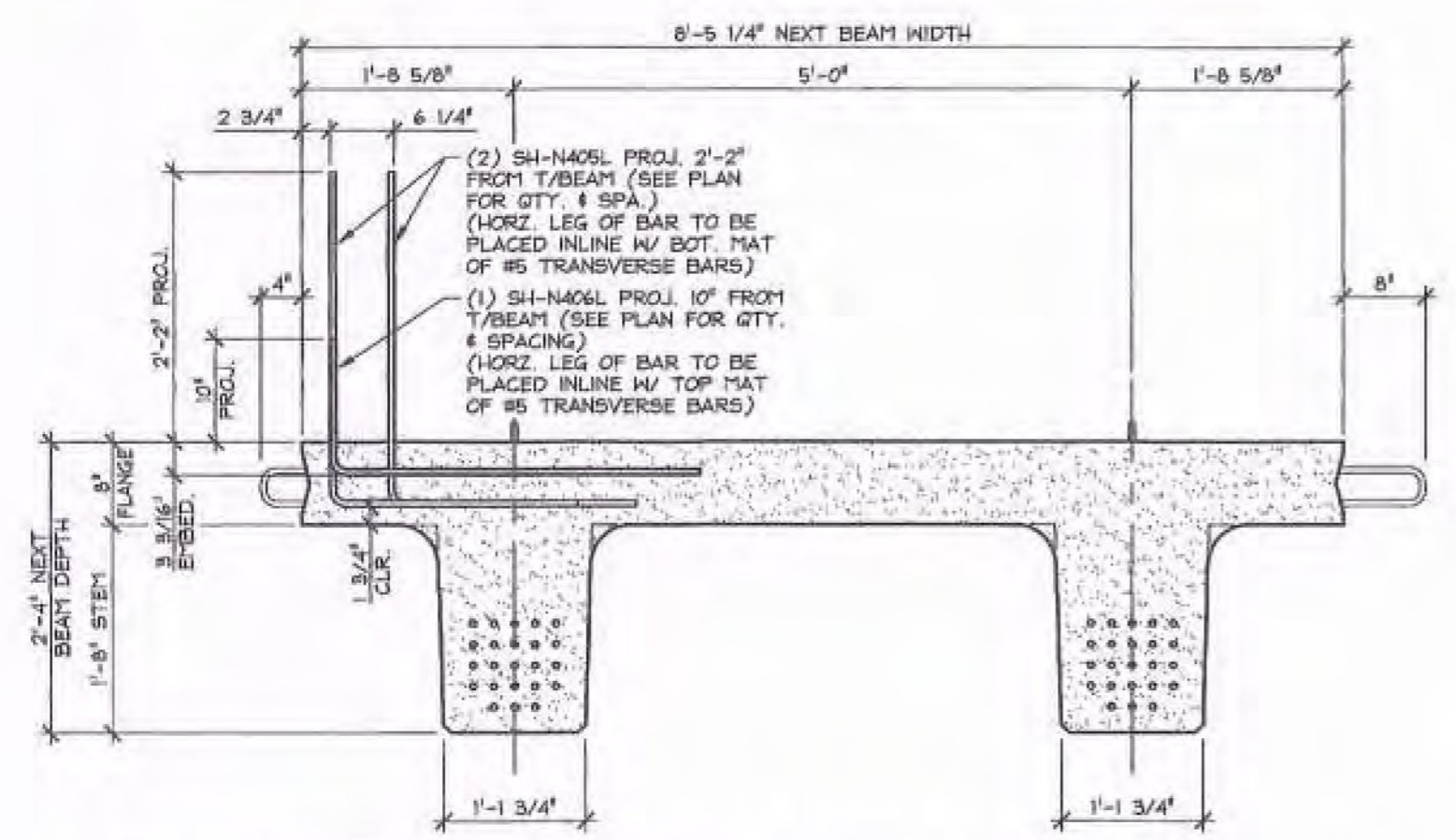
1 DIMENSIONAL PLAN VIEW IN FORM  
NB4 1/4" = 1'-0"



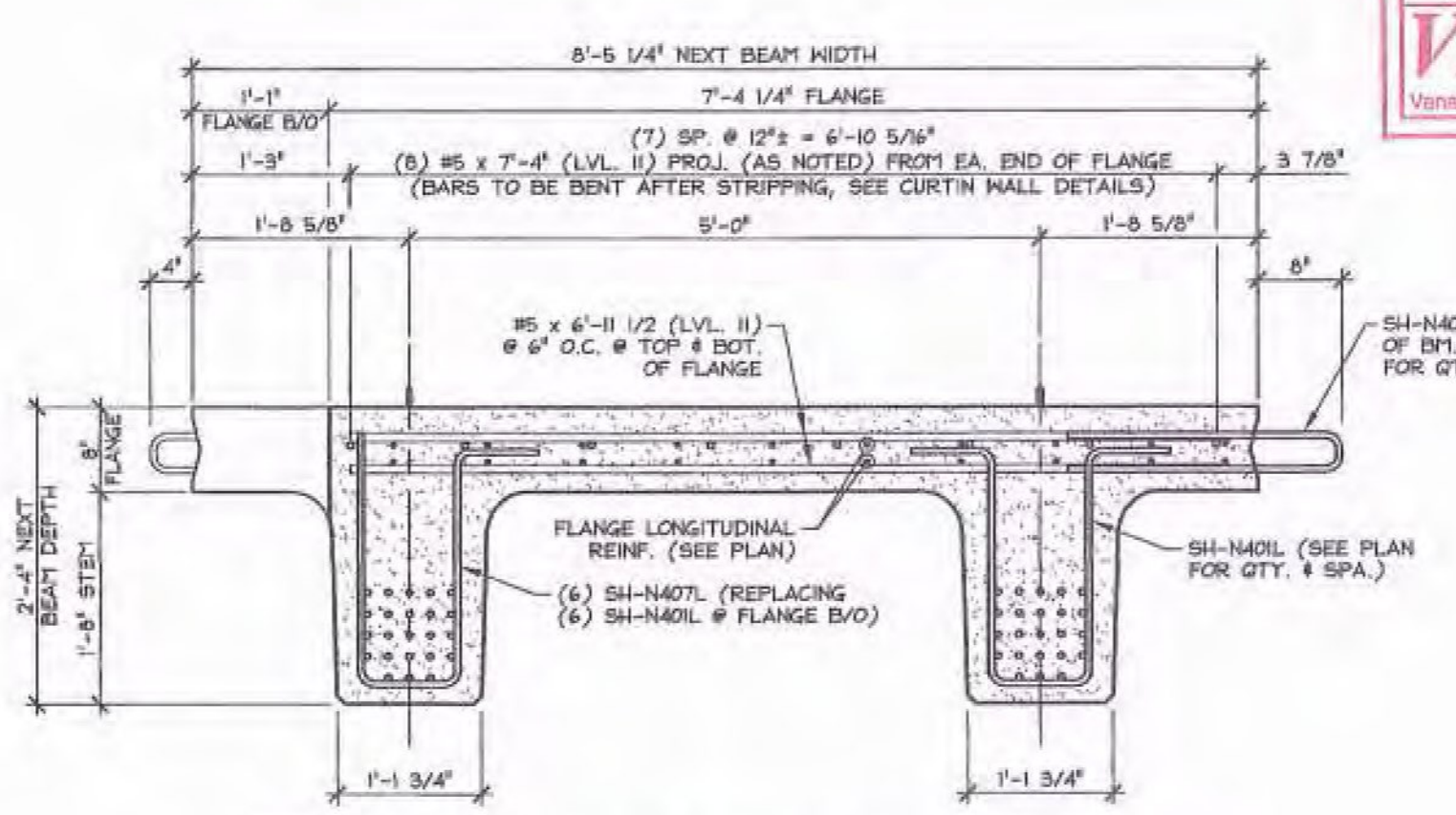
A ADDITIONAL PRECAST INSERTS SECTION  
NB4 3/4" = 1'-0"



2 REINFORCING PLAN VIEW IN FORM  
NB4 SEE CURTAIN WALL DETAILS FOR PROJECTING BAR BENDING & PROJECTING STRAND BENDING 1/4" = 1'-0"



3 ADDITIONAL COMPOSITE REINFORCING SECTION  
NB4 3/4" = 1'-0"



4 BEAM END REINFORCING SECTION  
NB4 SEE SECTION 'B/NB1' & REINFORCING PLAN FOR ADDITIONAL INFORMATION 3/4" = 1'-0"

Vermont Agency of Transportation  
**RECEIVED**  
ON: February 12, 2014  
and Checked for  
**CONFORMANCE**  
BY: Jennifer Fitch DATE: 02/27/14

SUBMITTED  
FEB 12 2014  
J. P. CARRARA & SONS, INC.  
Middlebury, VT 05753

MARK: SH-NB1 QTY.: 1 WT.: 45.87 T VOL.: 22.65 cy			
MATERIAL LIST / NEXT BEAM			
ITEM	MARK	DESCRIPTION	QTY.
1	SH-N401L	#4 BENT BAR (LEVEL II, DUAL COATED)	156
2	SH-N402L	#4 BENT BAR (LEVEL II, DUAL COATED)	245
3	SH-N403L	#4 HAIRPIN (LEVEL II, DUAL COATED)	126
4	SH-N404L	#4 BENT BAR (LEVEL II, DUAL COATED)	8
5	SH-N405L	#4 BENT BAR (LEVEL II, DUAL COATED)	178
6	SH-N406L	#4 BENT BAR (LEVEL II, DUAL COATED)	81
7	SH-N407L	#4 BENT BAR (LEVEL II, DUAL COATED)	12
8		#4 x 8'-0" (LVL. II, DUAL COATED)	18
9			
10		#5 x 6'-11 1/2" (LVL. II, DUAL COATED)	16
11		#5 x 7'-4" (LVL. II, DUAL COATED)	16
12		#5 x 8'-0" (LVL. II, DUAL COATED)	238
13		#5 x 63'-0" (W/ (1) 2'-6" STAGGERED LAP) (LVL. II, DUAL COATED)	24
14			
15	SH-N601L	#6 BENT BAR (LEVEL II, DUAL COATED)	4
16	SH-N602L	#6 BENT BAR (LEVEL II, DUAL COATED)	12
17			
18			
19	MK-N1	BRG. 2 3/4" x 1'-0 1/4" x 1'-4" W/ ANCHORS (GALV.)	2
20	MK-N4	MODIFIED UNIVERSAL APR DECK FORM HANGER 45" (GALV.)	15
21	MK-N5	DATTON 1/2" # 1-42 LOOP FERRULE INSERT (GALV.)	15
22		SET OF (4) 0.60# x 270 KSI STRAND LIFTING LOOPS	4
23			
24			
25			

**SHOP DRAWING REVIEW**

REVIEWED AS REQUIRED BY THE CONSTRUCTION CONTRACT DOCUMENTS AND APPROVED, BUT ONLY FOR CONFORMANCE TO THE DESIGN CONCEPT OF THE WORK, AND SUBJECT TO FURTHER LIMITATIONS AND REQUIREMENTS CONTAINED IN THE CONSTRUCTION CONTRACT DOCUMENTS.

REJECTED  REVISE AND RESUBMIT  FINISH AS CORRECTED

CORRECTIONS OR COMMENTS MADE ON THE SHOP DRAWINGS DURING THIS REVIEW DO NOT RELIEVE CONTRACTOR FROM COMPLIANCE WITH REQUIREMENTS OF THE DRAWINGS AND SPECIFICATIONS. THIS CHECK IS ONLY FOR REVIEW OF GENERAL CONFORMANCE WITH THE DESIGN CONCEPT OF THE PROJECT AND GENERAL COMPLIANCE WITH THE INFORMATION GIVEN IN THE CONTRACT DOCUMENTS. THE CONTRACTOR IS RESPONSIBLE FOR CONFIRMING AND CORRELATING ALL QUANTITIES AND DIMENSIONS, SELECTING FABRICATION PROCESSES AND TECHNIQUES OF CONSTRUCTION, COORDINATING HIS WORK WITH THAT OF ALL OTHER TRADES, AND PERFORMING HIS WORK IN A SAFE AND SATISFACTORY MANNER.

**VHB** Vanasse Hangen Brustlin, Inc.  
Job Number: 52138-00  
Reviewed By: *[Signature]*  
Date: 2-14-14

2-11-14 ADD C.I.P. FORMING INSERTS

APPROVAL STAMP:

**J.P. CARRARA & SONS INC.**  
Precast & Prestress Manufacturer  
284 GEE ST., MIDDLEBURY, VERMONT 05753 Phone: (802) 258-5381 Fax: (802) 258-9010

**T. BUCK CONSTRUCTION**  
CONTRACTOR  
AUBURN, MAINE

STATE OF VERMONT AGENCY OF TRANSPORTATION  
COUNTY OF ADDISON

TOWN OF MIDDLEBURY  
ROUTE NO. VT 125, EAST MIDDLEBURY GORGE  
BRIDGE NO. 13 PROJECT NO.: RS 0174(B)

PRESTRESSED NEXT BEAM  
PLANS & SECTION

DATE: OCT. 9, 2013  
SCALE: NOTED  
CHKD: DFTM: B.L.  
JOB NO: 23411-013  
DWG. NO: NB4