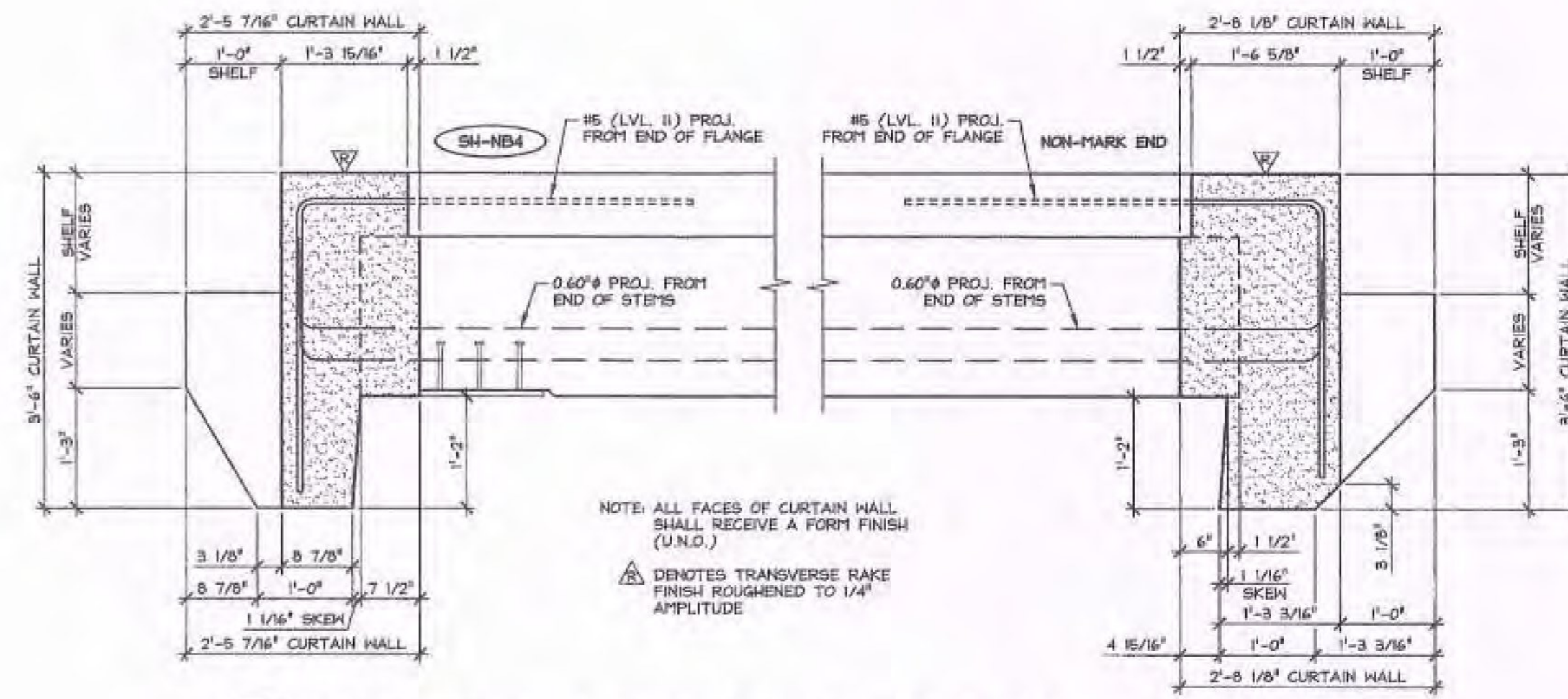
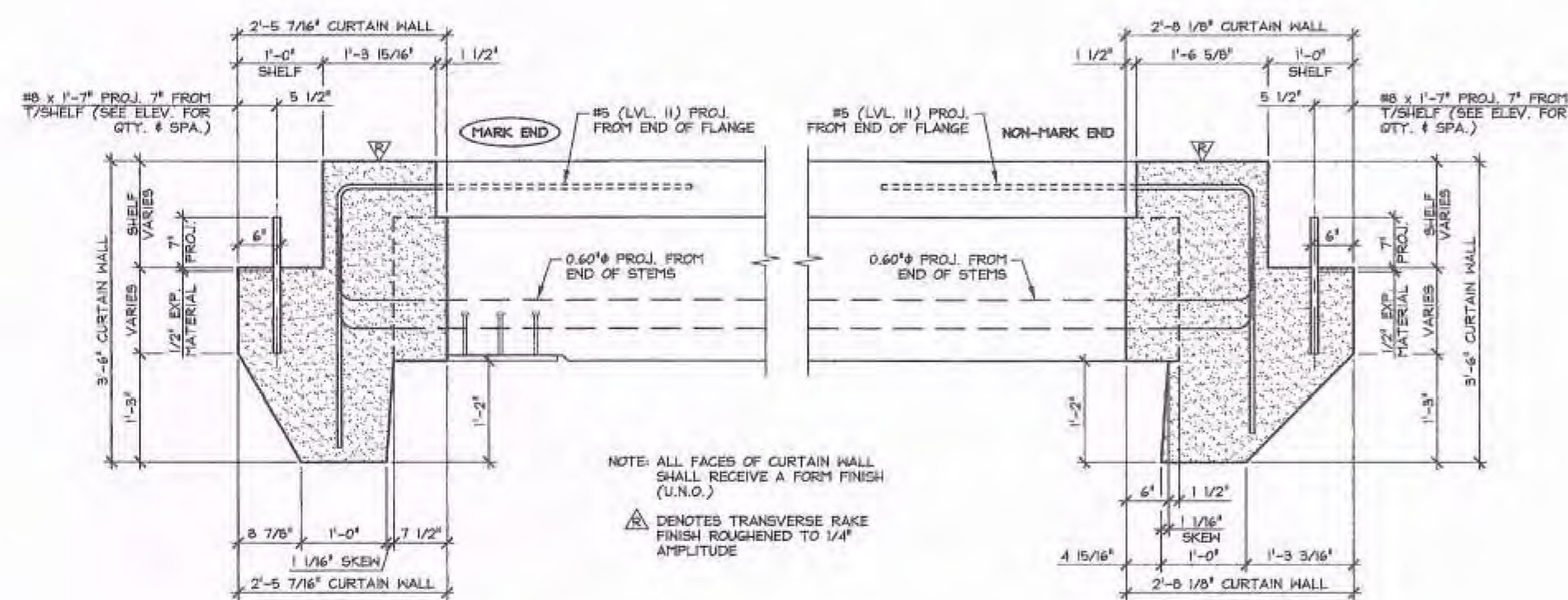


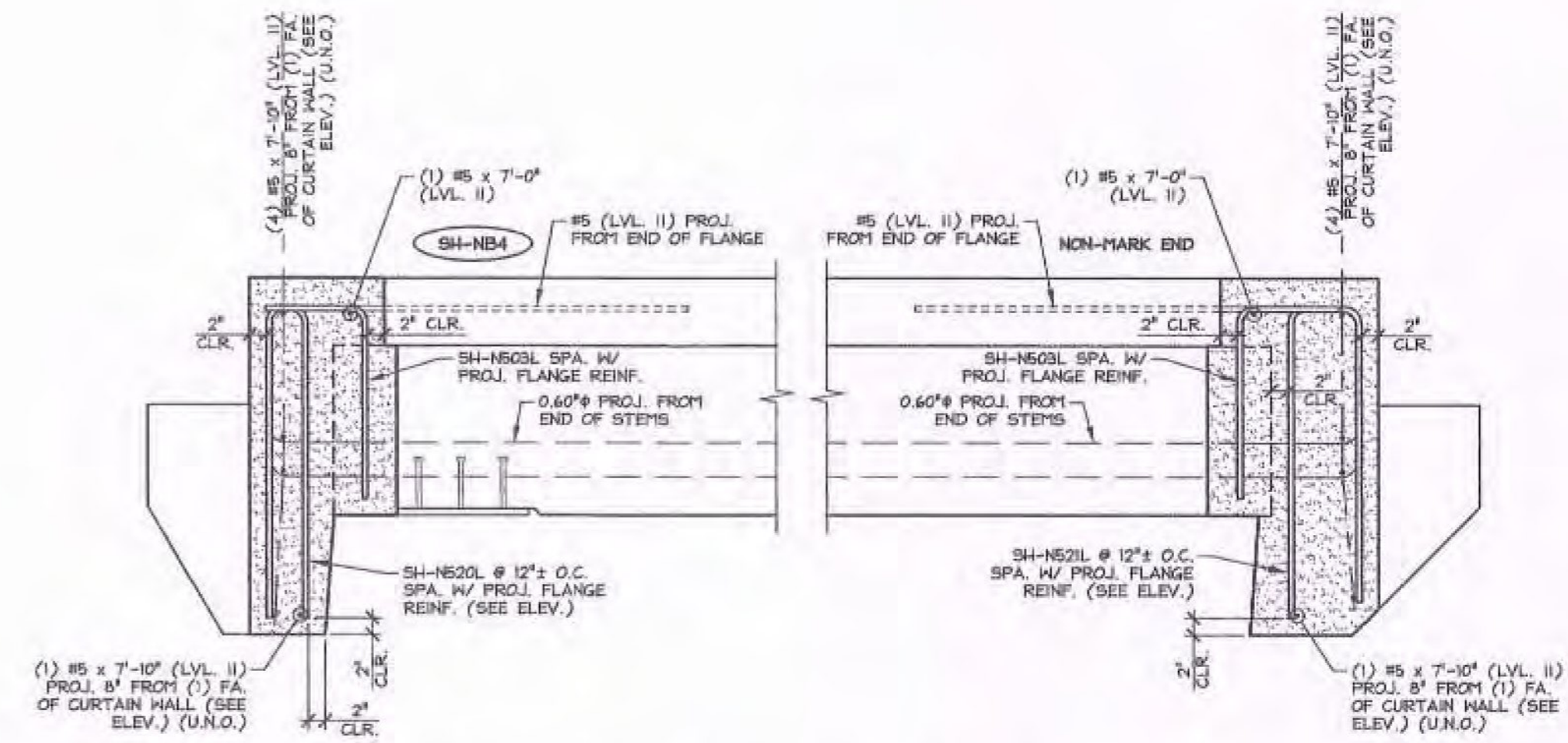
A PROJECTING STRAND & PROJECTING BAR BEND DETAIL
NBI.1 3/4" = 1'-0"



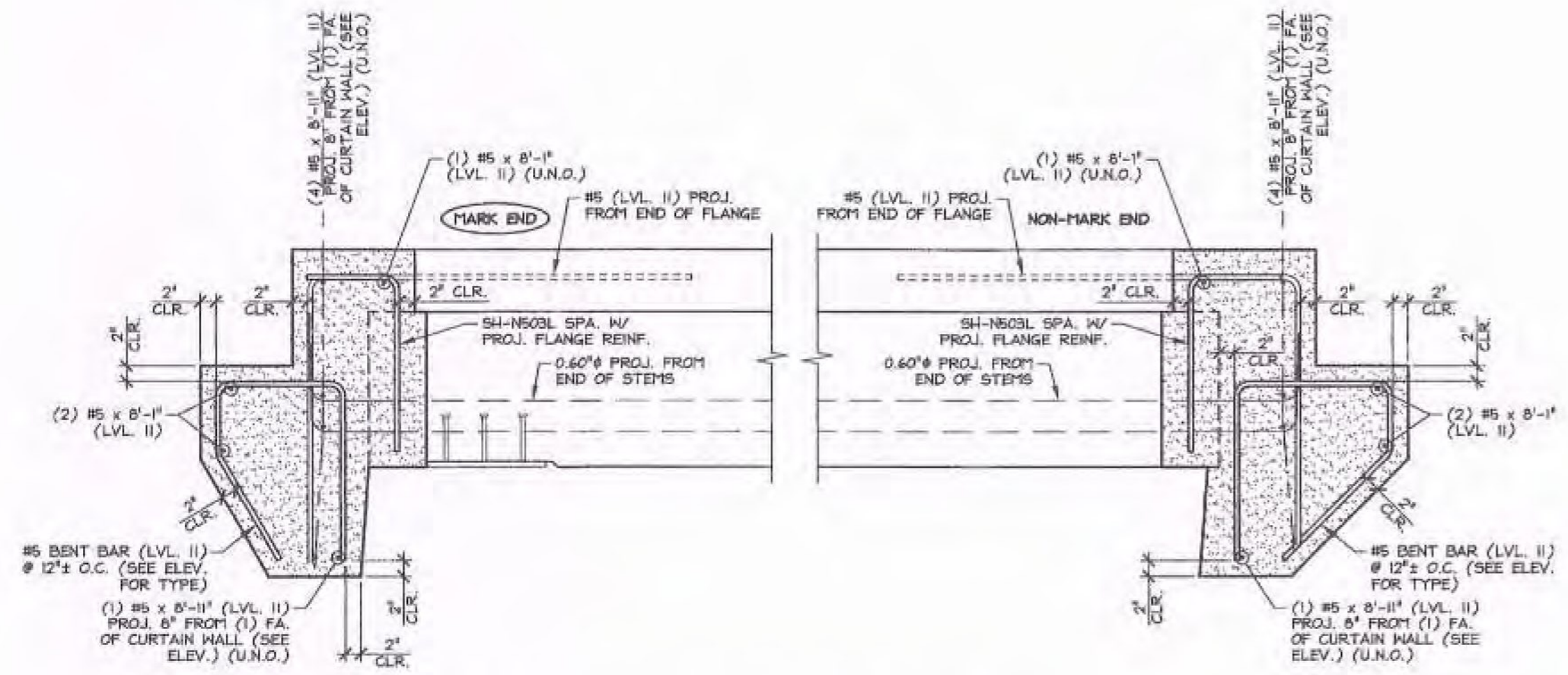
D CURTAIN WALL DIMENSIONAL SECTIONS
NBI.1 3/4" = 1'-0"



B CURTAIN WALL DIMENSIONAL SECTIONS
NBI.1 3/4" = 1'-0"



E CURTAIN WALL REINFORCING SECTIONS
NBI.1 3/4" = 1'-0"



C CURTAIN WALL REINFORCING SECTIONS
NBI.1 3/4" = 1'-0"

Vermont Agency of Transportation

RECEIVED

ON: February 12, 2014

and Checked for

CONFORMANCE

BY: Jennifer Fitch DATE: 02/27/14

SUBMITTED
FEB 12 2014
J.P. CARRARA & SONS, INC.
MIDDLEBURY, VT 05753

SHOP DRAWING REVIEW

REVIEWED AS REQUIRED BY THE CONSTRUCTION CONTRACT DOCUMENTS AND APPROVED, BUT ONLY FOR CONFORMANCE TO THE DESIGN CONCEPT OF THE WORK, AND SUBJECT TO FURTHER LIMITATIONS AND REQUIREMENTS CONTAINED IN THE CONSTRUCTION CONTRACT DOCUMENTS

REJECTED REUSE AND RESUBMIT FINISH AS CORRECTED

CORRECTIONS OR COMMENTS MADE ON THE SHOP DRAWINGS DURING THIS REVIEW DO NOT RELIEVE CONTRACTOR FROM COMPLIANCE WITH REQUIREMENTS OF THE DRAWINGS AND SPECIFICATIONS. THIS CHECK IS ONLY FOR REVIEW OF GENERAL CONFORMANCE WITH THE DESIGN CONCEPT OF THE PROJECT AND GENERAL COMPLIANCE WITH THE INFORMATION GIVEN IN THE CONTRACT DOCUMENTS. THE CONTRACTOR IS RESPONSIBLE FOR CONFIRMING AND CORRELATING ALL QUANTITIES AND DIMENSIONS, SELECTING FABRICATION PROCESSES AND TECHNIQUES OF CONSTRUCTION, COORDINATING HIS WORK WITH THAT OF ALL OTHER TRADES, AND PERFORMING HIS WORK IN A SAFE AND SATISFACTORY MANNER.

VHB
Vermont Highway Builders, Inc.

Job Number: 57738.00
Reviewed By: R. Mason
Date: 2-14-14

APPROVAL STAMP:	J.P. CARRARA & SONS INC. Precast & Prestress Manufacturer 294 ONE STAR WHEELER, VERMONT 05753 Phone: (802)338-6361 Fax: (802)338-9510	T. BUCK CONSTRUCTION CONTRACTOR AUBURN, MAINE
	STATE OF VERMONT AGENCY OF TRANSPORTATION COUNTY OF ADDISON	DATE: OCT. 9, 2013 SCALE: NOTED
	TOWN OF MIDDLEBURY ROUTE NO. VT 125, EAST MIDDLEBURY GORGE BRIDGE NO.: 13 PROJECT NO.: RS 0174(B)	CHKD: DFM: B.L. JOB NO: 23411-013
	PRECAST CURTAIN WALL DETAILS	DWG. NO: NBI.1