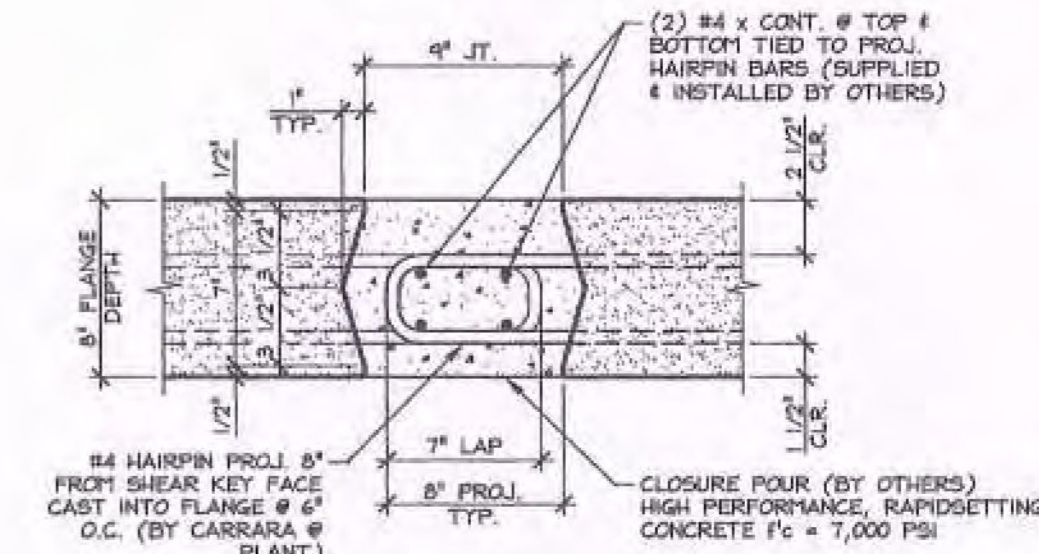
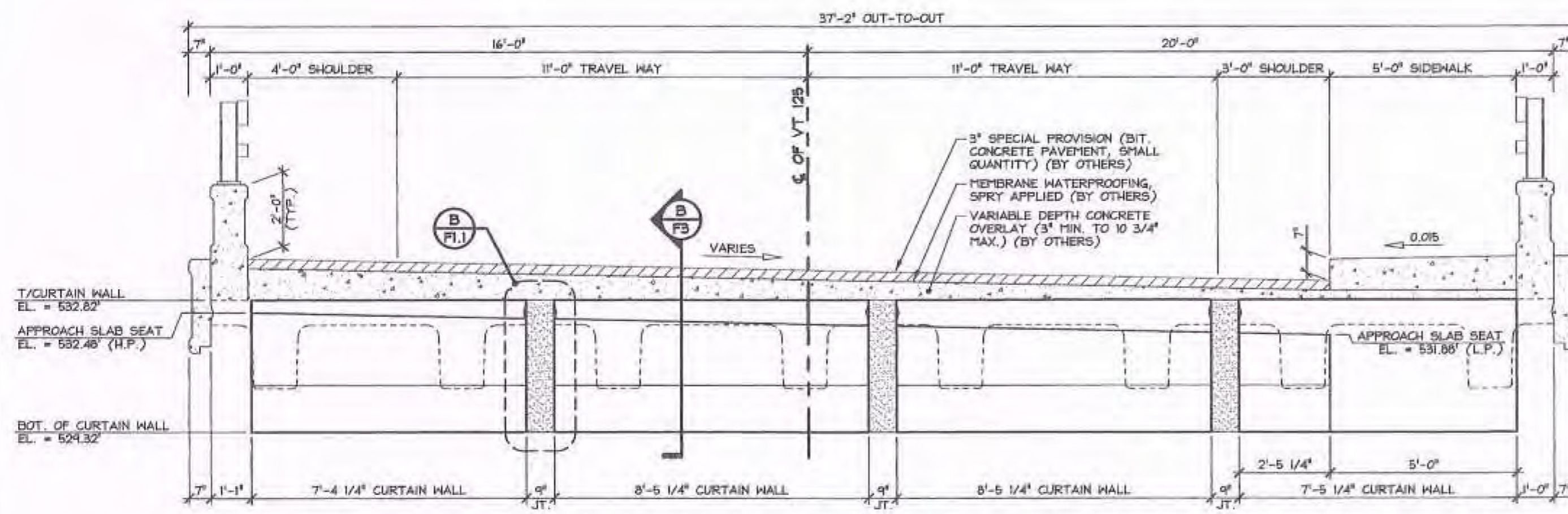


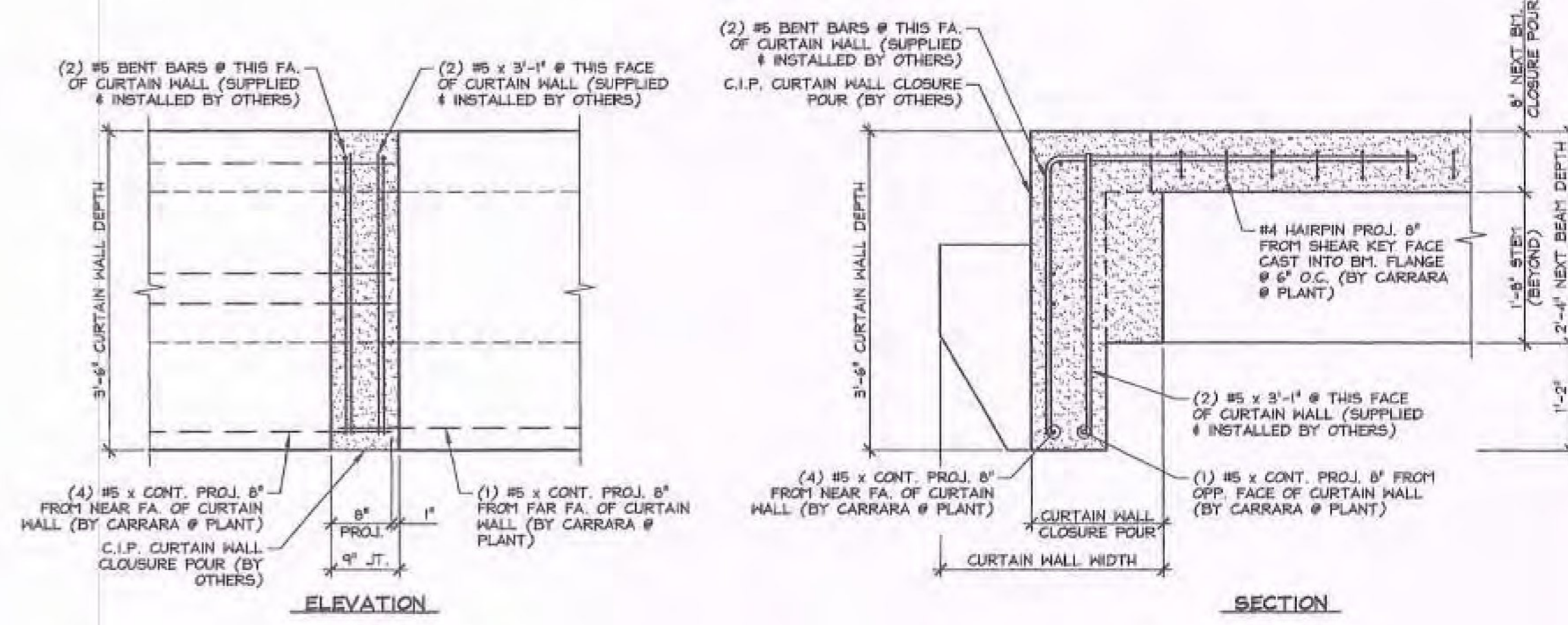
1 TRANSVERSE SECTION
 F1.1 3/8" = 1'-0"



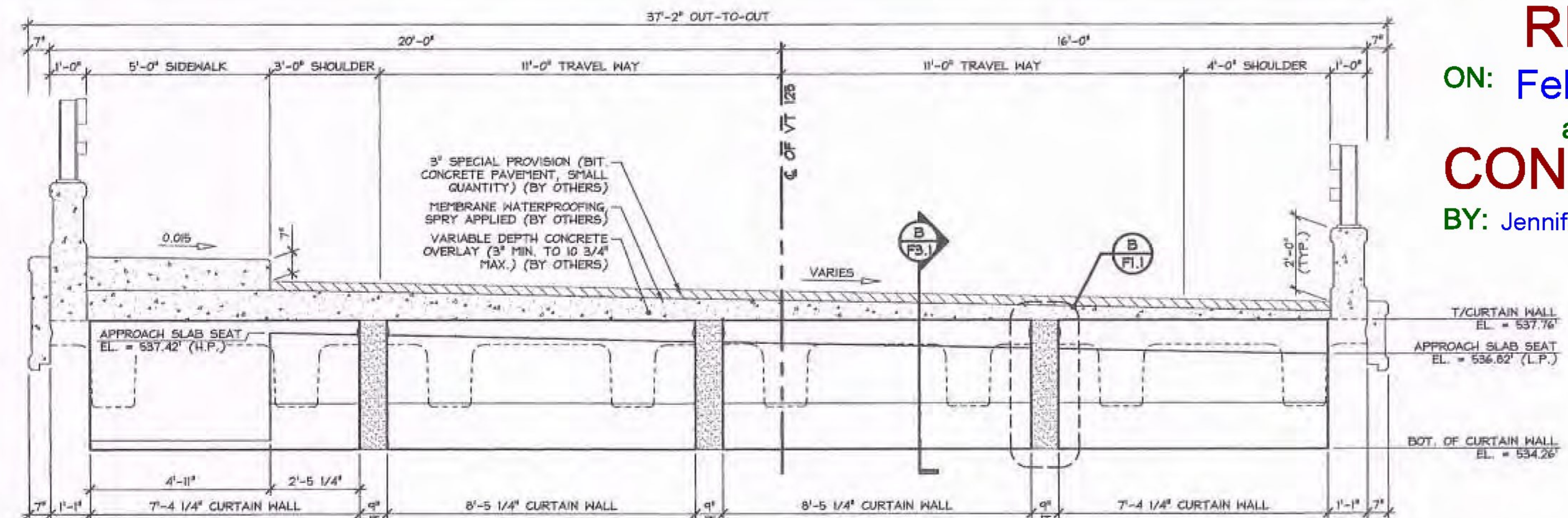
A NEXT BEAM CLOSURE POUR DETAIL
 F1.1 1/2" = 1'-0"



2 WEST ELEVATION - ABUTMENT #1
 F1.1 BEGIN BRIDGE STA. 139+06.75 3/8" = 1'-0"



B CURTAIN WALL CLOSURE POUR DETAILS
 F1.1 3/4" = 1'-0"



3 EAST ELEVATION - ABUTMENT #2
 F1.1 END BRIDGE STA. 139+72.75 3/8" = 1'-0"

Vermont Agency of Transportation
RECEIVED
 ON: February 12, 2014
 and Checked for
CONFORMANCE
 BY: Jennifer Fitch DATE: 02/27/14

SHOP DRAWING REVIEW

REVIEWED AS REQUIRED BY THE CONSTRUCTION CONTRACT DOCUMENTS AND APPROVED, BUT ONLY FOR CONFORMANCE TO THE DESIGN CONCEPT OF THE WORK, AND SUBJECT TO FURTHER LIMITATIONS AND REQUIREMENTS CONTAINED IN THE CONSTRUCTION CONTRACT DOCUMENTS.

PREPARED REUSE AND RESUBMIT FINISH AS CORRECTED

CONTRCTIONS OR COMMENTS MADE ON THE SHOP DRAWINGS DURING THIS REVIEW DO NOT RELIEVE CONTRACTOR FROM COMPLIANCE WITH REQUIREMENTS OF THE DRAWINGS AND SPECIFICATIONS. THIS CHECK IS ONLY FOR REVIEW OF GENERAL CONFORMANCE WITH THE DESIGN CONCEPTS OF THE PROJECT AND GENERAL CONFORMANCE WITH THE INFORMATION GIVEN IN THE CONTRACT DOCUMENTS. THE CONTRACTOR IS RESPONSIBLE FOR CORRECTING AND CONTROLLING ALL QUANTITIES AND DIMENSIONS; SELECTING FABRICATOR PROCESSES AND TECHNIQUES OF CONSTRUCTION; COORDINATING THE WORK WITH THAT OF ALL OTHER TRADES; AND PERFORMING HIS WORK IN A SAFE AND SATISFACTORY MANNER.

VHB Vermont Hangan Driscoll, Inc.
 Job Number: 57438.00
 Reviewed By: B. Mone
 Date: 2-14-14

SUBMITTED
 FEB 12 2014
 J.P. CARRARA & SONS, INC.
 MIDDLEBURY, VT 05753

APPROVAL STAMP:	J.P. CARRARA & SONS INC. Precast & Prestress Manufacturer 264 GAY ST., MIDDLEBURY, VERMONT 05753 Phone: (802)388-6351 Fax: (802)388-3010	T. BUCK CONSTRUCTION CONTRACTOR AUBURN, MAINE
	STATE OF VERMONT AGENCY OF TRANSPORTATION COUNTY OF ADDISON	DATE: OCT. 9, 2013 SCALE: NOTED
	TOWN OF MIDDLEBURY ROUTE NO. VT 125, EAST MIDDLEBURY GORGE BRIDGE NO.: 13 PROJECT NO.: RS 0174(B)	CHKD: DFM: B.L. JOB NO: 23411-013
	PRESTRESSED NEXT BEAM SECTIONS & ELEVATIONS	DWG. NO: F1.1