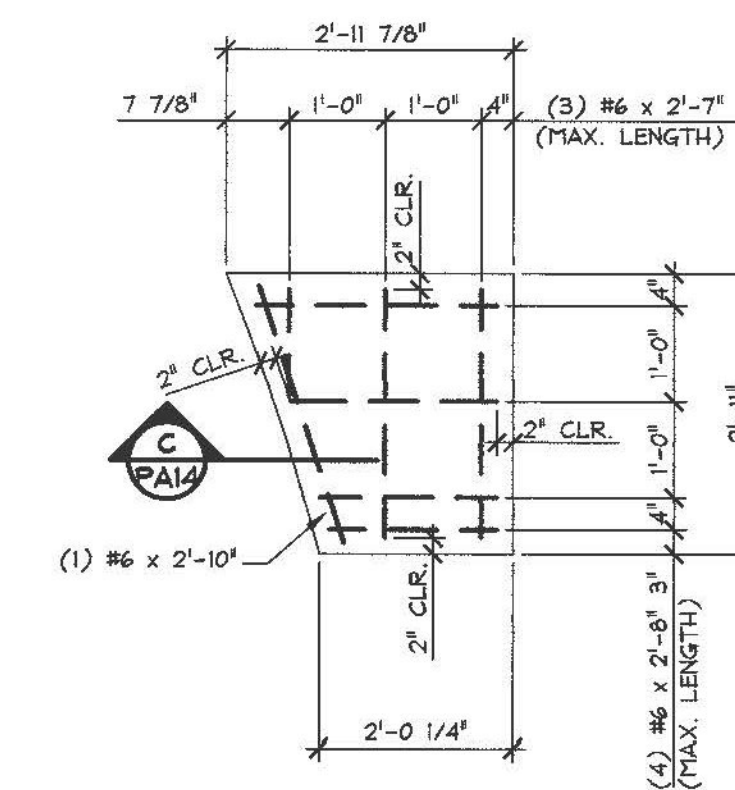
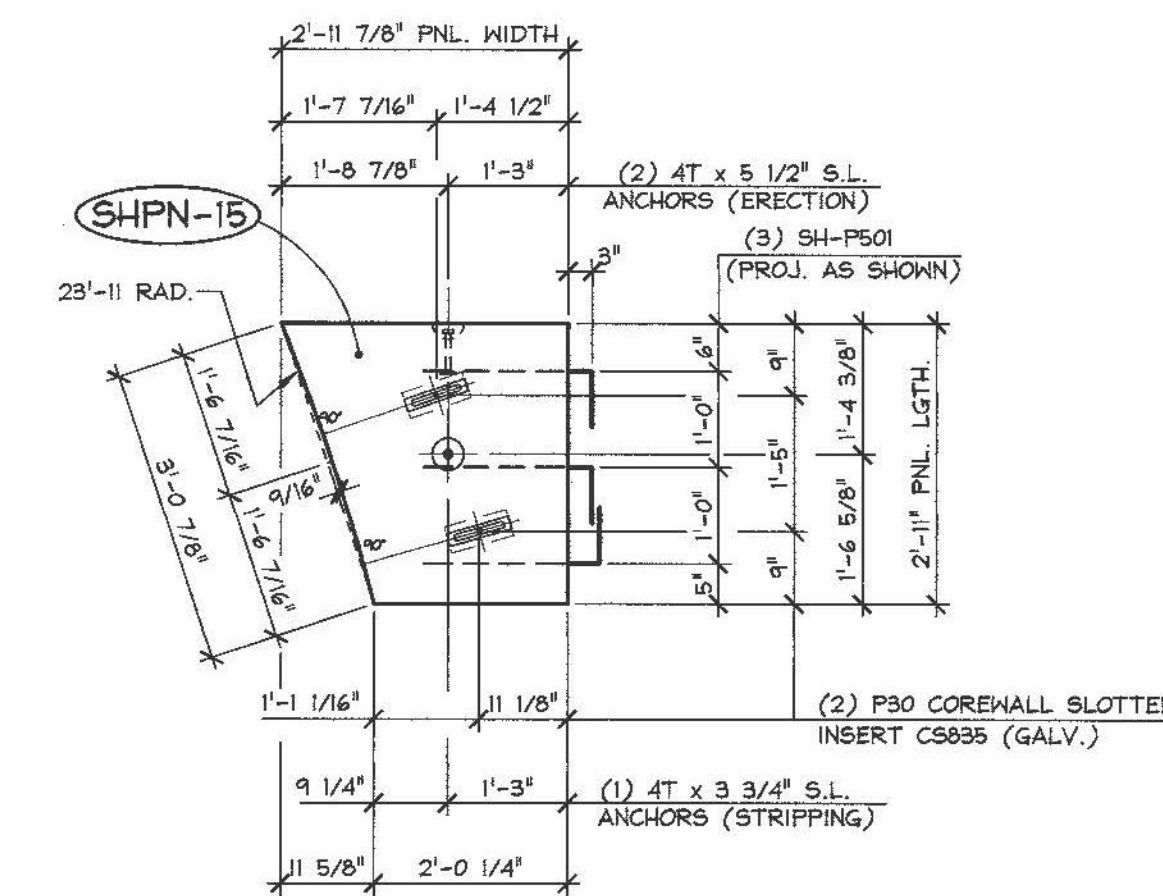
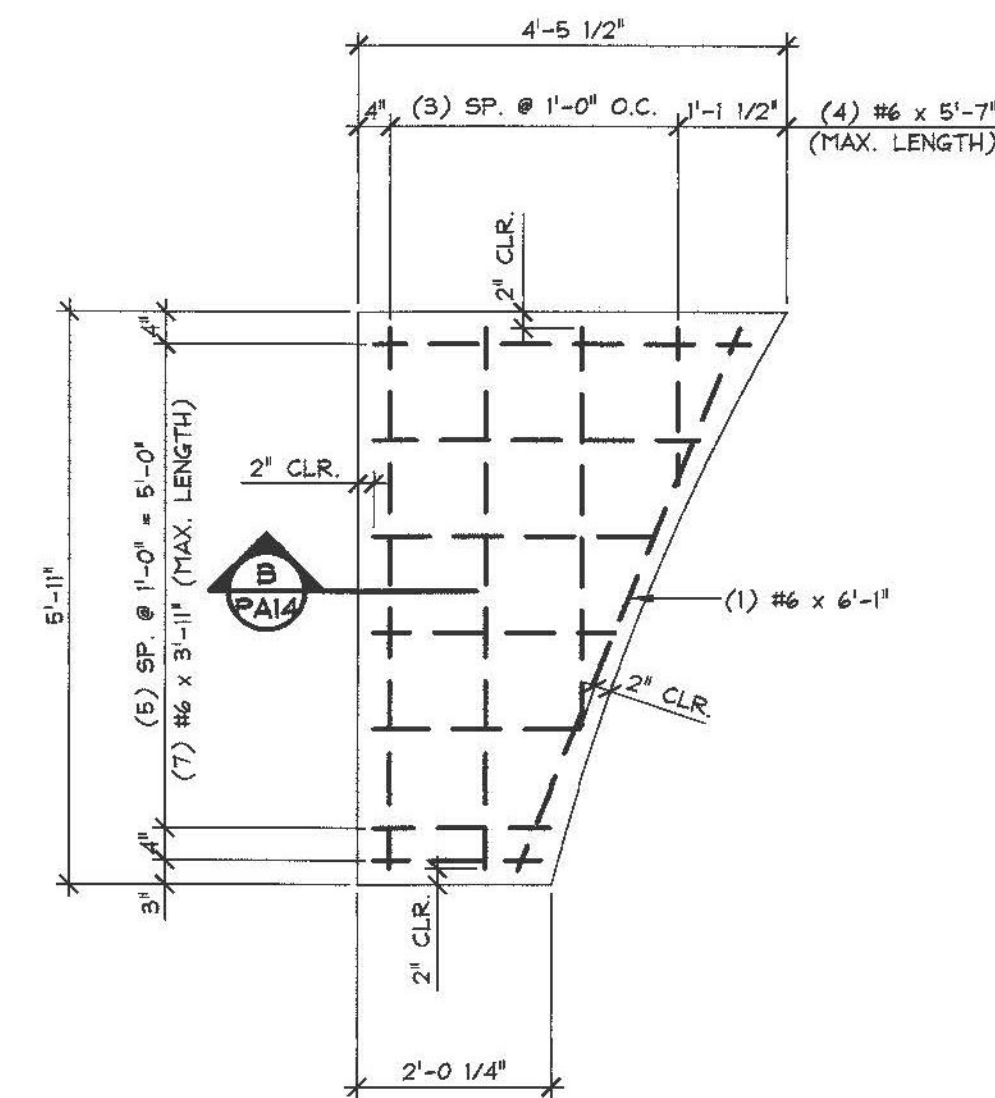
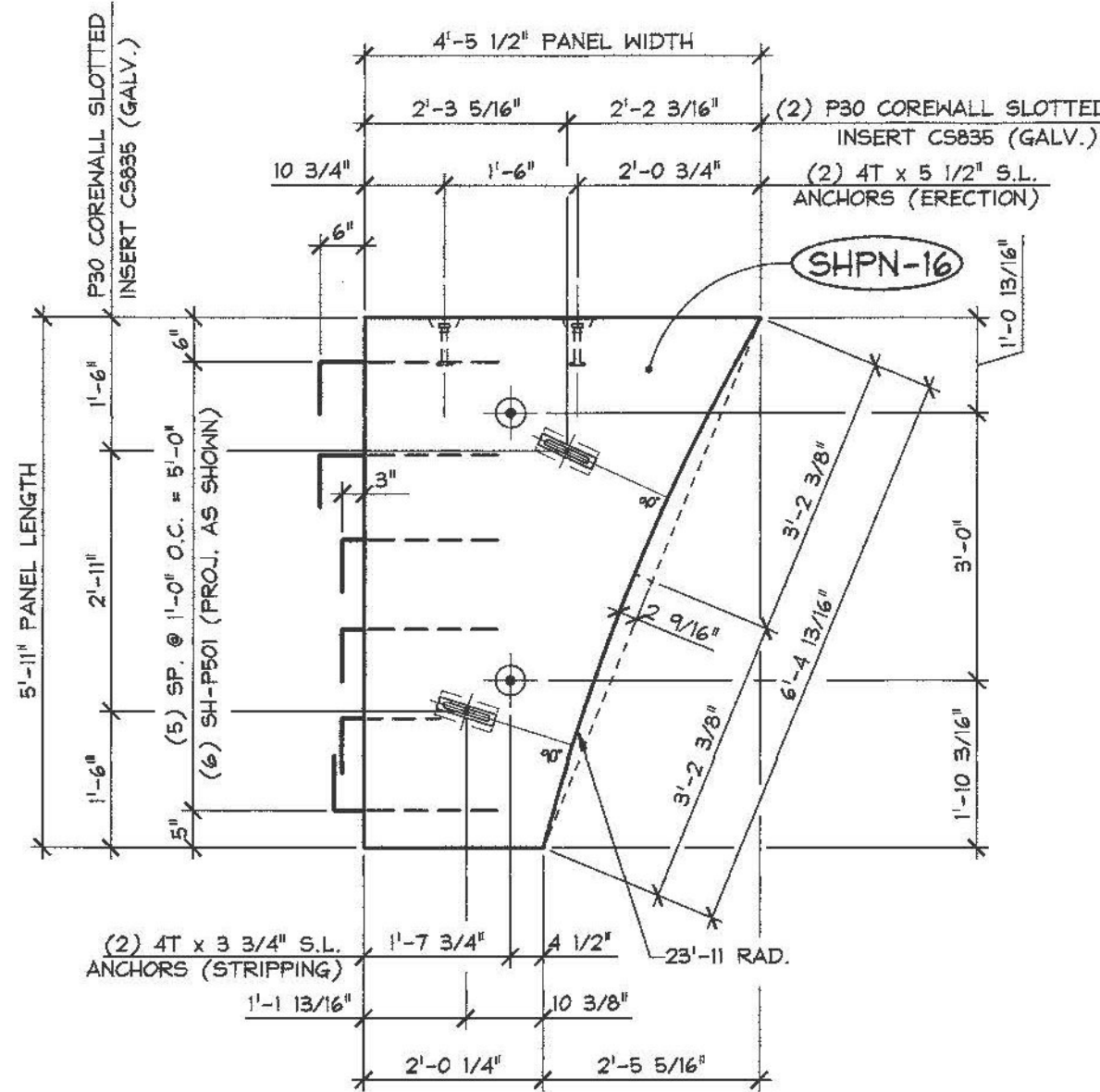
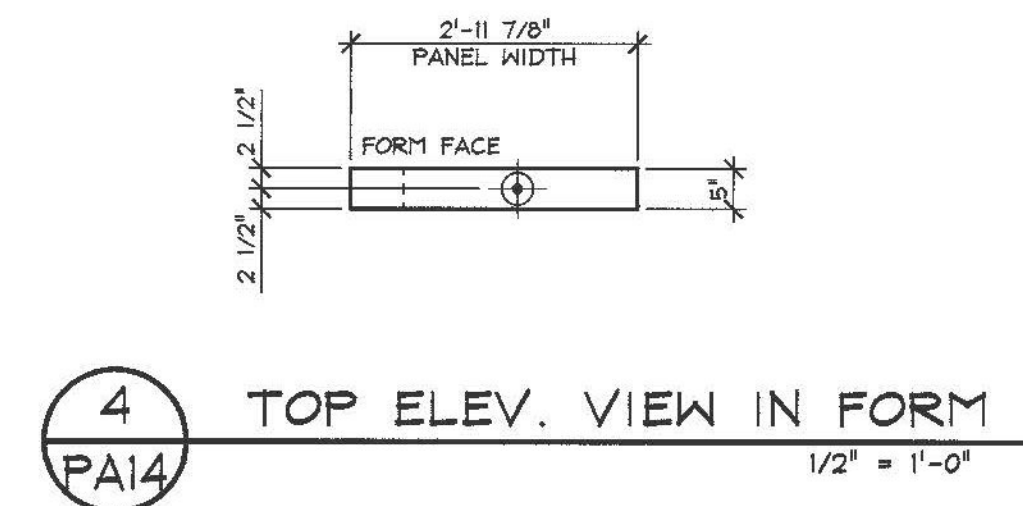
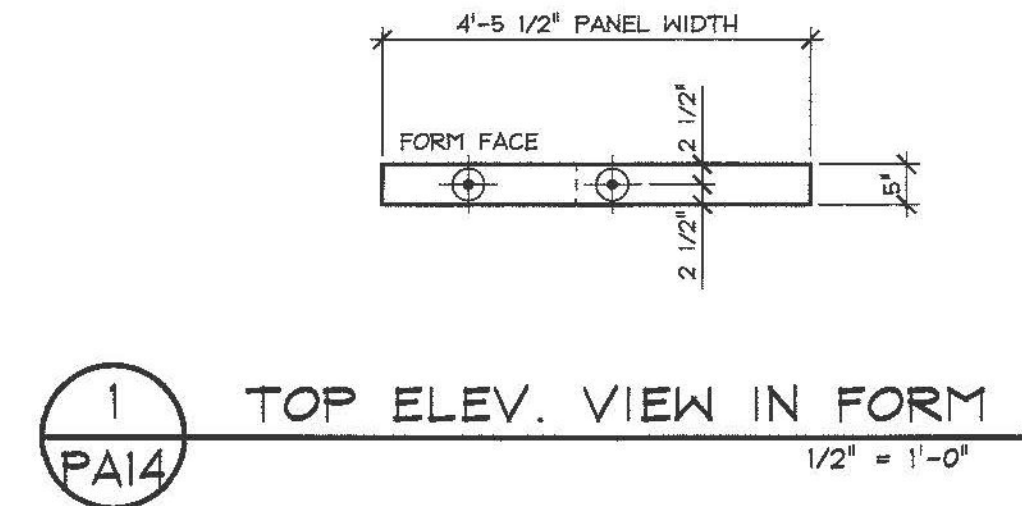


RECEIVED
 ON: April 2, 2014
 and Checked for
CONFORMANCE
 BY: Jennifer Fitch DATE: 04/04/2014



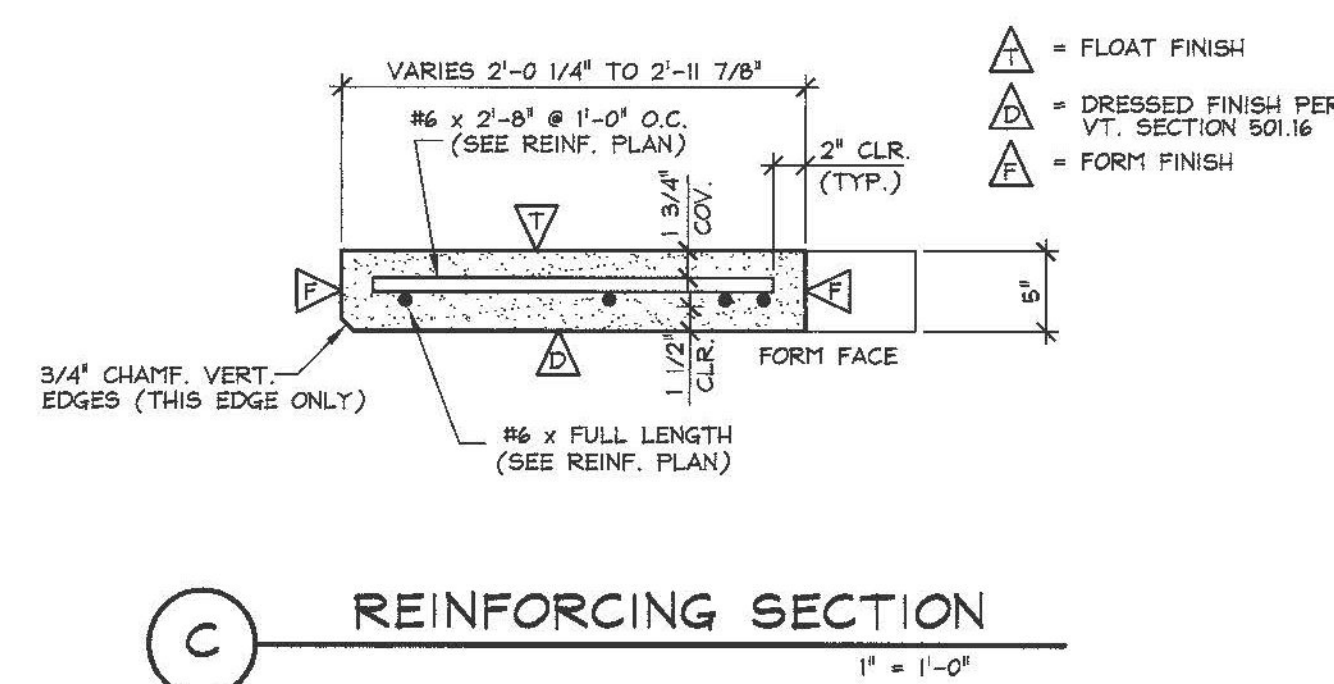
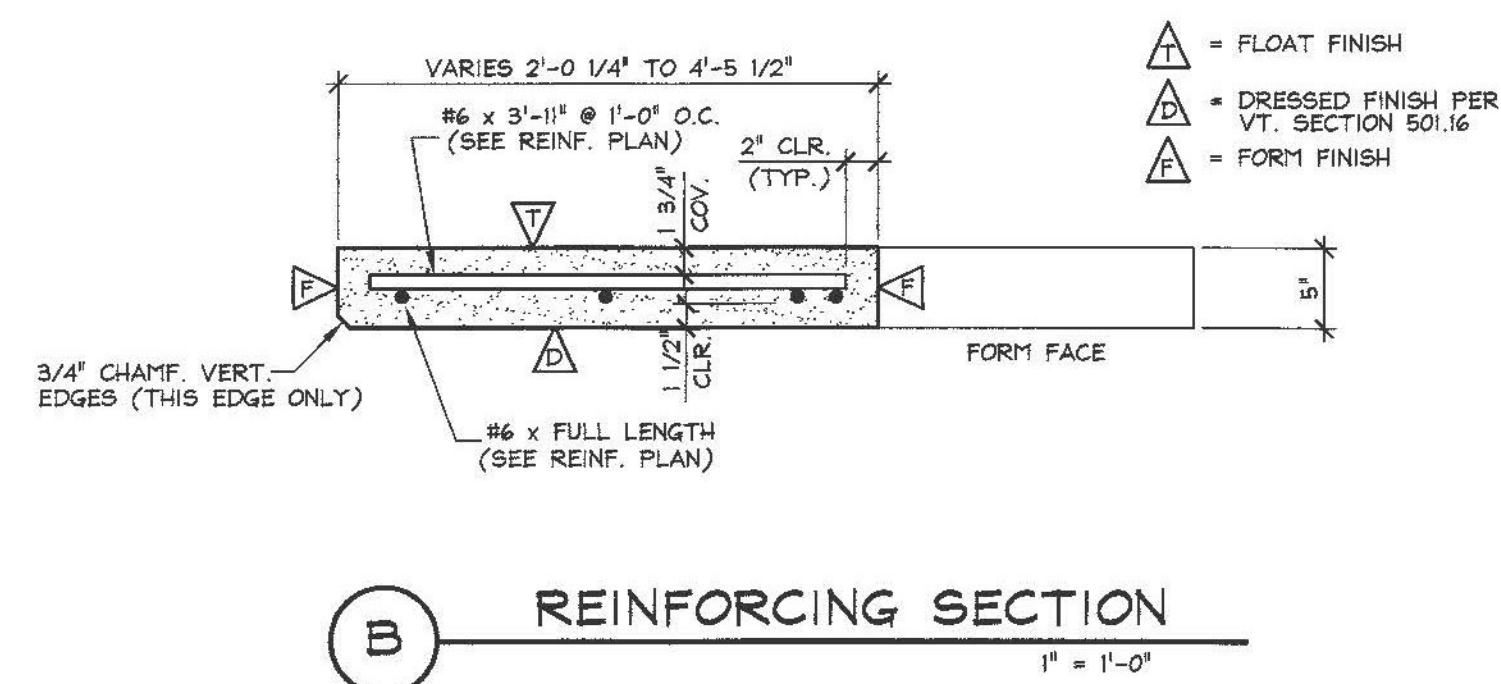
2 PLAN VIEW IN FORM
PA14 1/2" = 1'-0"

3 REINF. PLAN VIEW IN FORM
PA14 1/2" = 1'-0"

5 PLAN VIEW IN FORM
PA14 1/2" = 1'-0"

6 REINF. PLAN VIEW IN FORM
PA14 1/2" = 1'-0"

3500 PSI @ RELEASE
 5000 PSI @ 28 DAYS
 MIX DESIGN: 445MSCC



B REINFORCING SECTION
1" = 1'-0"

C REINFORCING SECTION
1" = 1'-0"

MARK	QTY.	WT.	VOL.
MARK: SHPN-16	1	.57 T	.28 cy
MARK: SHPN-15	1	.23 T	.11 cy

MATERIAL LIST / ARCHITECTURAL PANEL				
ITEM	MARK	DESCRIPTION	PN-16	PN-15
1				
2				
3		DAYTON P30 COREMALL CS835 SLOTTED INSERT (GALV.)	2	2
4		DAYTON 4T x 3 3/4" SWIFT LIFT (BLACK) (WITH RECESS PLUG)	2	1
5		DAYTON 4T x 5 1/2" SWIFT LIFT (BLACK) (WITH RECESS PLUG)	2	2
6				
7		#6 x 5'-7" (LEVEL II, DUAL COATED)	4	
8		#6 x 3'-11" (LEVEL II, DUAL COATED)	7	
9		#6 x 6'-1" (LEVEL II, DUAL COATED)	1	
10		#6 x 2'-7" (LEVEL II, DUAL COATED)		3
11		#6 x 2'-8" (LEVEL II, DUAL COATED)		4
12		#6 x 2'-10" (LEVEL II, DUAL COATED)		1
13				
14	SH-P501	#5 BENT BAR (LEVEL II, DUAL COATED)	6	3
15				
15				
15				
15				
15				

ISSUED FOR PRODUCTION
 APR 01 2014
 J.P. CARRARA & SONS, INC.
 MIDDLEBURY, VT 05753

SHOP DRAWING REVIEW

REVIEWED AS REQUIRED BY THE CONSTRUCTION CONTRACT DOCUMENTS AND APPROVED, BUT ONLY FOR CONFORMANCE TO THE DESIGN CONCEPT OF THE WORK AND SUBJECT TO FURTHER LIMITATIONS AND REQUIREMENTS CONTAINED IN THE CONSTRUCTION CONTRACT DOCUMENTS.

REJECTED
 REVISE AND RESUBMIT
 FURNISH AS CORRECTED

CORRECTIONS OR COMMENTS MADE ON THE SHOP DRAWINGS DURING THIS REVIEW DO NOT RELIEVE CONTRACTOR FROM COMPLIANCE WITH REQUIREMENTS OF THE DRAWINGS AND SPECIFICATIONS. THIS CHECK IS ONLY FOR REVIEW OF GENERAL CONFORMANCE WITH THE DESIGN CONCEPT OF THE PROJECT AND GENERAL COMPLIANCE WITH THE INFORMATION GIVEN IN THE CONTRACT DOCUMENTS. THE CONTRACTOR IS RESPONSIBLE FOR: CONFIRMING AND CORRELATING ALL QUANTITIES AND DIMENSIONS; SELECTING FABRICATION PROCESSES AND TECHNIQUES OF CONSTRUCTION; COORDINATING HIS WORK WITH THAT OF ALL OTHER TRADES; AND PERFORMING HIS WORK IN A SAFE AND SATISFACTORY MANNER.

VHB Job Number: 57438
 Reviewed By: G.S. Goodrich
 Date: 4/4/2014

APPROVAL STAMP:

J.P. CARRARA & SONS INC. Precast & Prestress Manufacturer 2444 CASE ST., MIDDLEBURY, VERMONT 05753 Phone: (802)388-6381 Fax: (802)388-9010	T. BUCK CONSTRUCTION CONTRACTOR AUBURN, MAINE
STATE OF VERMONT AGENCY OF TRANSPORTATION COUNTY OF ADDISON	DATE: OCT. 9, 2013 SCALE: NOTED
TOWN OF MIDDLEBURY ROUTE NO. VT 125, EAST MIDDLEBURY GORGE BRIDGE NO.: 13 PROJECT NO.: RS 0174(B)	CHKD: DFTM: T.D. JOB NO: 23411-013
P/C ARCHITECTURAL PANEL DETAILS	DWG. NO: PA14

F:\VT-Bridges\23411-13 Sand Hill Bridge\23411-013 PA14.dwg, 4/1/2014 8:51:24 AM