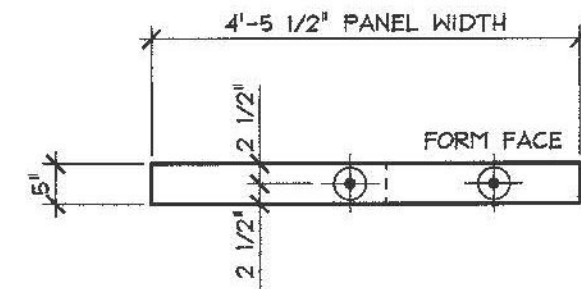
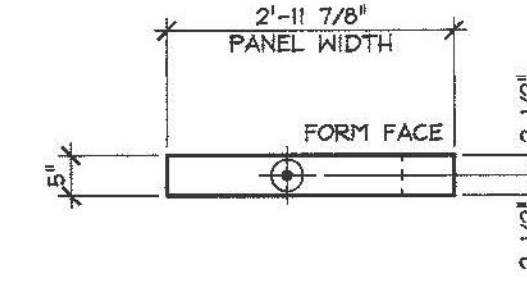


**RECEIVED**  
 ON: April 2, 2014  
 and Checked for  
**CONFORMANCE**

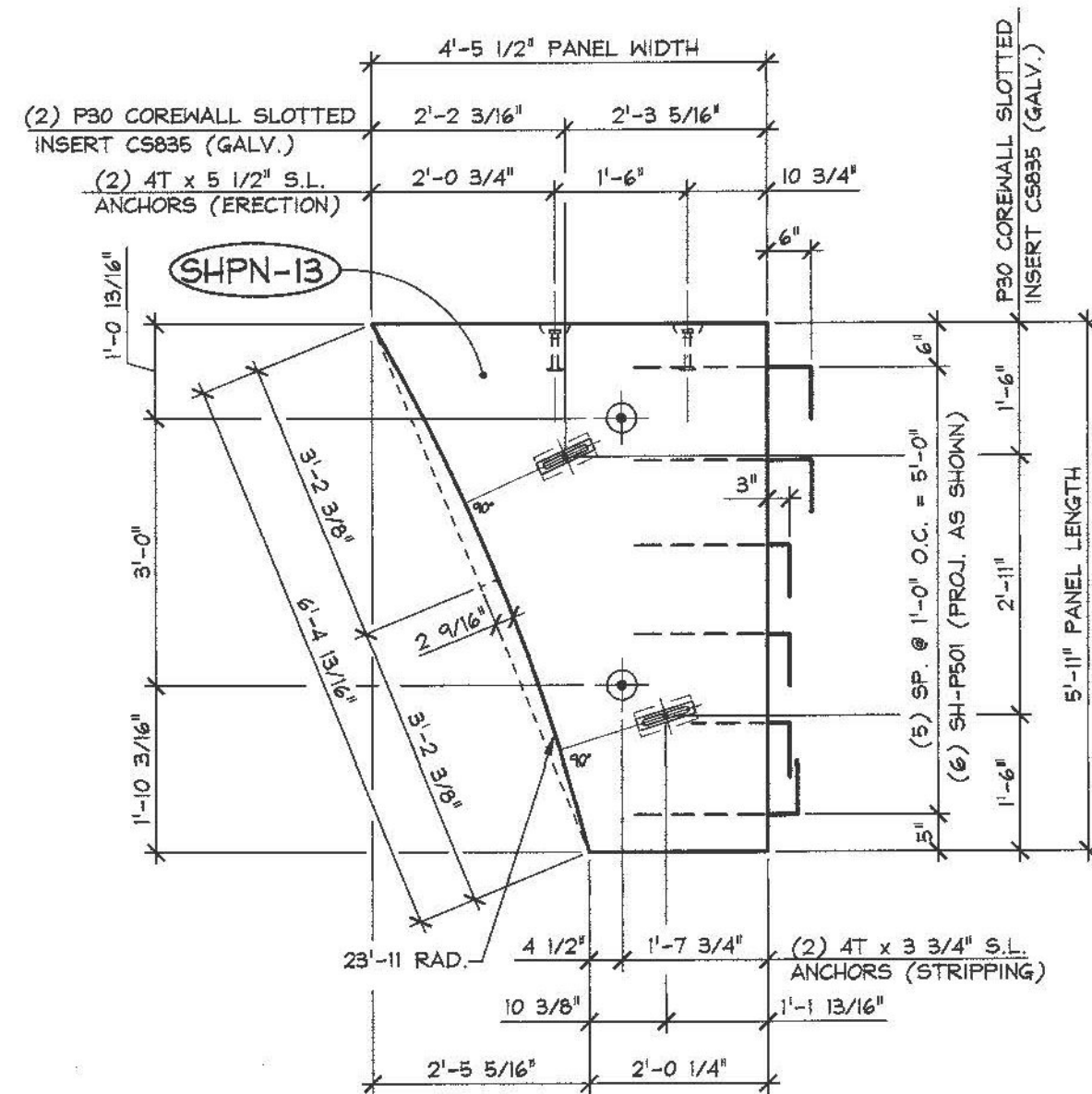
BY: Jennifer Fitch DATE: 04/04/2014



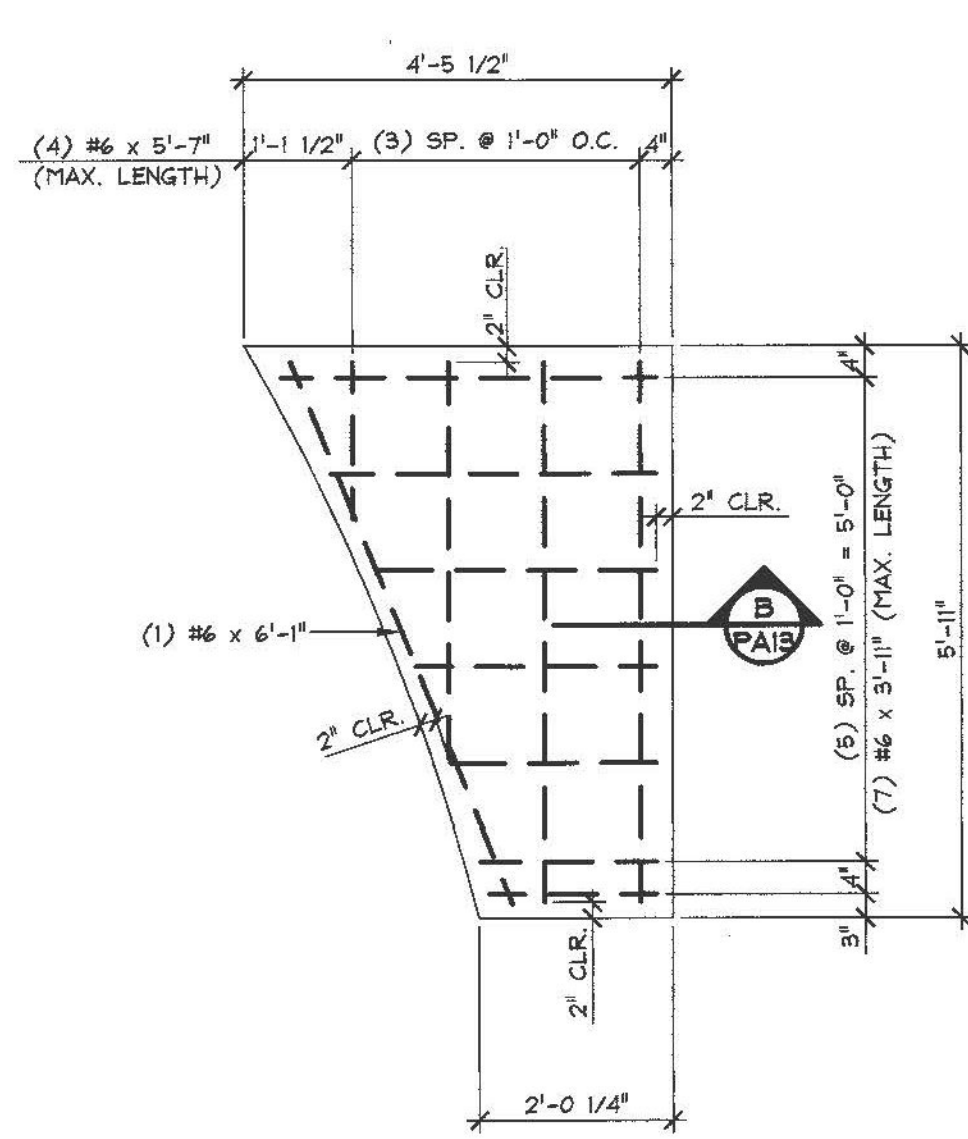
1 TOP ELEV. VIEW IN FORM  
 PA13 1/2" = 1'-0"



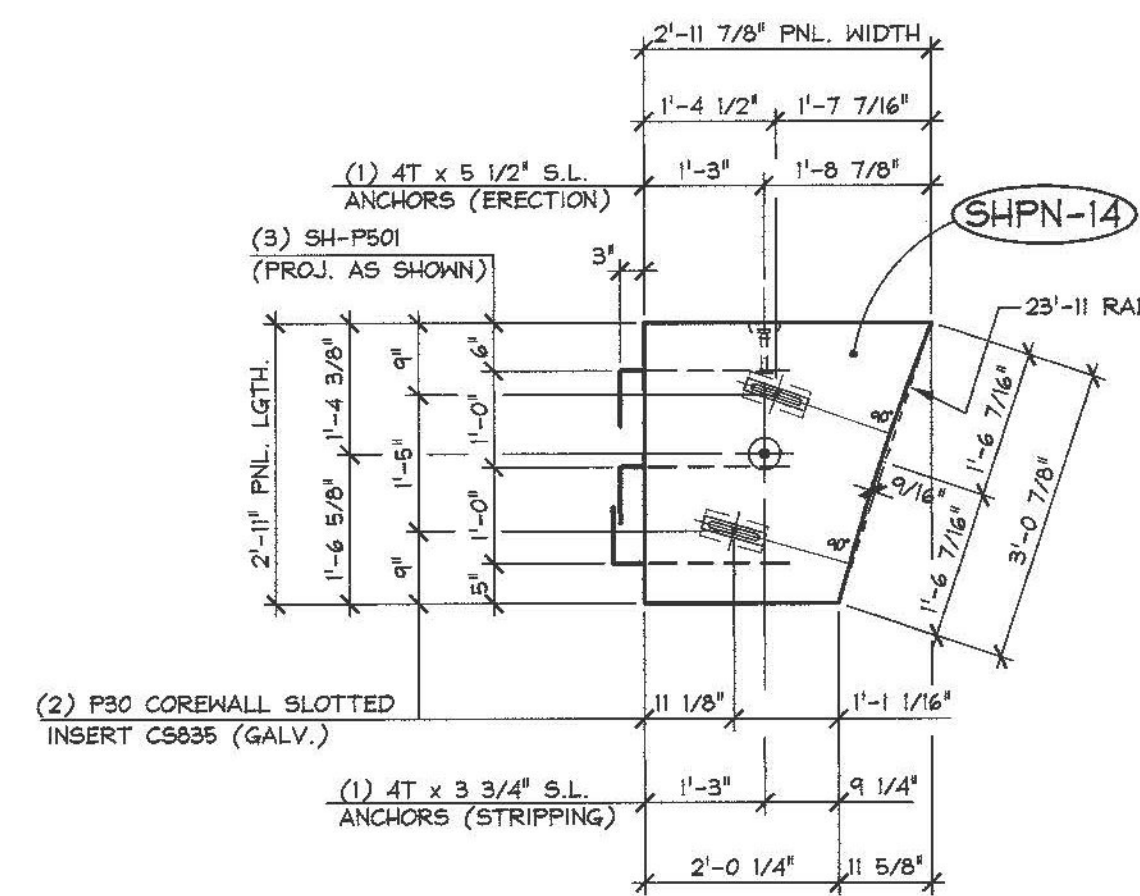
4 TOP ELEV. VIEW IN FORM  
 PA13 1/2" = 1'-0"



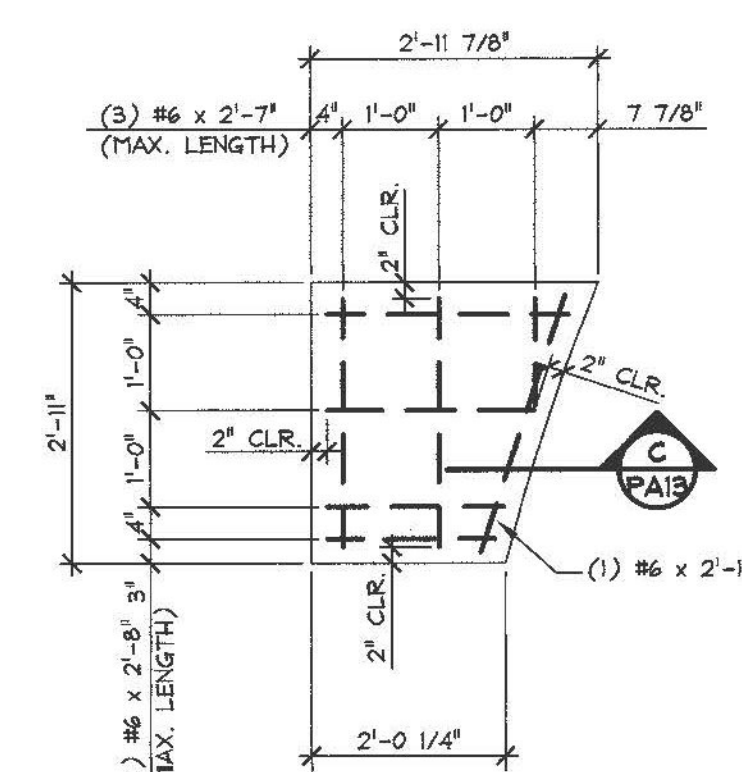
2 PLAN VIEW IN FORM  
 PA13 1/2" = 1'-0"



3 REINF. PLAN VIEW IN FORM  
 PA13 1/2" = 1'-0"

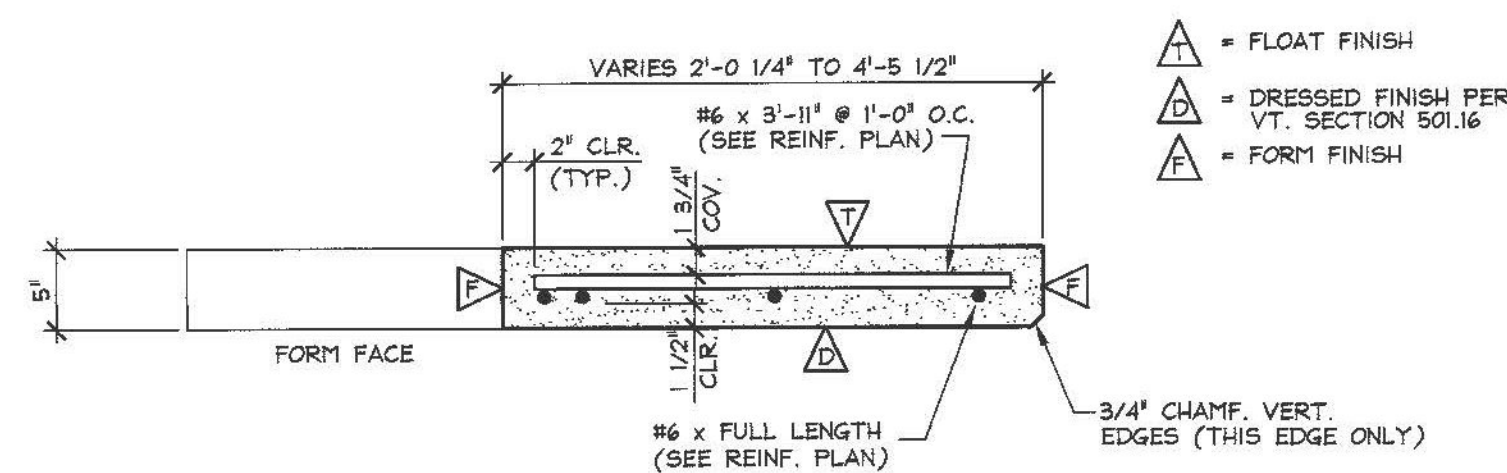


5 PLAN VIEW IN FORM  
 PA13 1/2" = 1'-0"

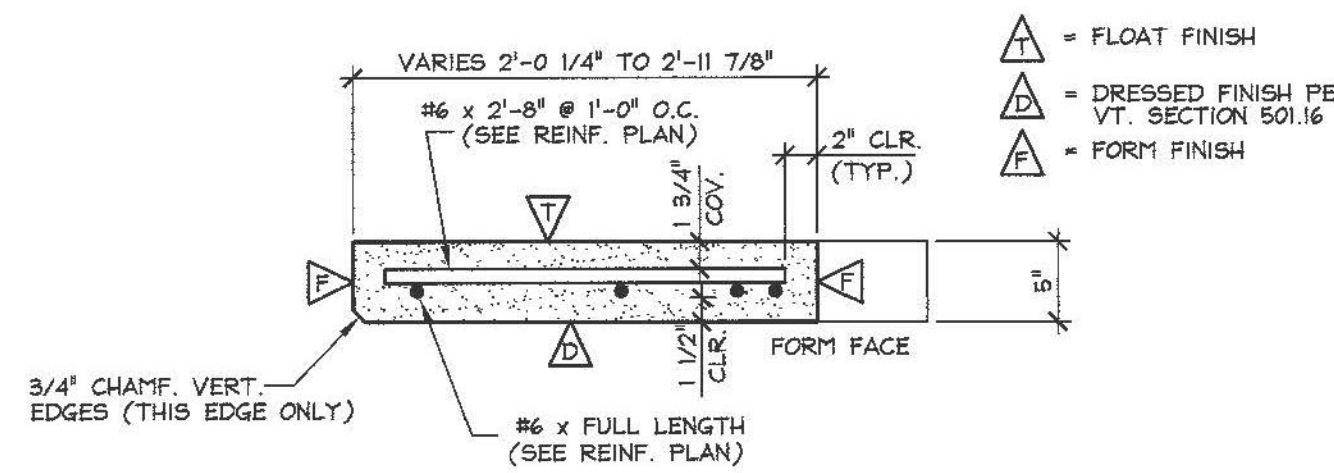


6 REINF. PLAN VIEW IN FORM  
 PA13 1/2" = 1'-0"

3500 PSI @ RELEASE  
 5000 PSI @ 28 DAYS  
 MIX DESIGN: 4#M9CC



B REINFORCING SECTION  
 1" = 1'-0"



C REINFORCING SECTION  
 1" = 1'-0"

MARK	MARK	DESCRIPTION	PN-13	PN-14
MARK: SHPN-13	QTY.: 1	WT.: .57 T	VOL.: .28 cy	
MARK: SHPN-14	QTY.: 1	WT.: .23 T	VOL.: .11 cy	
MATERIAL LIST / ARCHITECTURAL PANEL				
1				
2				
3		DAYTON P30 COREHALL CS835 SLOTTED INSERT (GALV.)	2	2
4		DAYTON 4T x 3 3/4" SWIFT LIFT (BLACK) (WITH RECESS PLUG)	2	1
5		DAYTON 4T x 5 1/2" SWIFT LIFT (BLACK) (WITH RECESS PLUG)	2	2
6				
7		#6 x 5'-7" (LEVEL II, DUAL COATED)	4	
8		#6 x 3'-11" (LEVEL II, DUAL COATED)	7	
9		#6 x 6'-1" (LEVEL II, DUAL COATED)	1	
10		#6 x 2'-7" (LEVEL II, DUAL COATED)		3
11		#6 x 2'-8" (LEVEL II, DUAL COATED)		4
12		#6 x 2'-10" (LEVEL II, DUAL COATED)		1
13				
14	SHI-P501	#5 BENT BAR (LEVEL II, DUAL COATED)	6	3
15				
15				
15				
15				

ISSUED FOR PRODUCTION  
 APR 01 2014  
 J.P. CARRARA & SONS, INC.  
 MIDDLEBURY, VT 05753

**SHOP DRAWING REVIEW**

REVIEWED AS REQUIRED BY THE CONSTRUCTION CONTRACT DOCUMENTS AND APPROVED, BUT ONLY FOR CONFORMANCE TO THE DESIGN CONCEPT OF THE WORK, AND SUBJECT TO FURTHER LIMITATIONS AND REQUIREMENTS CONTAINED IN THE CONSTRUCTION CONTRACT DOCUMENTS.

REJECTED  REVISE AND RESUBMIT  FURNISH AS CORRECTED

CORRECTIONS OR COMMENTS MADE ON THE SHOP DRAWINGS DURING THIS REVIEW DO NOT RELIEVE CONTRACTOR FROM COMPLIANCE WITH REQUIREMENTS OF THE DRAWINGS AND SPECIFICATIONS. THIS CHECK IS ONLY FOR REVIEW OF GENERAL CONFORMANCE WITH THE DESIGN CONCEPT OF THE PROJECT AND GENERAL COMPLIANCE WITH THE INFORMATION GIVEN IN THE CONTRACT DOCUMENTS. THE CONTRACTOR IS RESPONSIBLE FOR: CONFIRMING AND CORRELATING ALL QUANTITIES AND DIMENSIONS; SELECTING FABRICATION PROCESSES AND TECHNIQUES OF CONSTRUCTION; COORDINATING HIS WORK WITH THAT OF ALL OTHER TRADES; AND PERFORMING HIS WORK IN A SAFE AND SATISFACTORY MANNER.

**VHB** Job Number: 57438  
 Reviewed By: G.S. Goodrich  
 Date: 4/4/2014

APPROVAL STAMP:

**J.P. CARRARA & SONS INC.**  
 Precast & Prestress Manufacturer  
 244 GEE ST., MIDDLEBURY, VERMONT 05753 Phone: (802)388-6361 Fax: (802)388-9010

**T. BUCK CONSTRUCTION**  
 CONTRACTOR  
 AUBURN, MAINE

STATE OF VERMONT AGENCY OF TRANSPORTATION  
 COUNTY OF ADDISON

TOWN OF MIDDLEBURY  
 ROUTE NO. VT 125, EAST MIDDLEBURY GORGE  
 BRIDGE NO.: 13 PROJECT NO.: RS 0174(B)

P/C ARCHITECTURAL PANEL DETAILS

DATE: OCT. 9, 2013  
 SCALE: NOTED  
 CHKD: DFTM: T.D.  
 JOB NO: 23411-013  
 DWG. NO: PA13

2-11-14 GENERAL REVISION T.D.