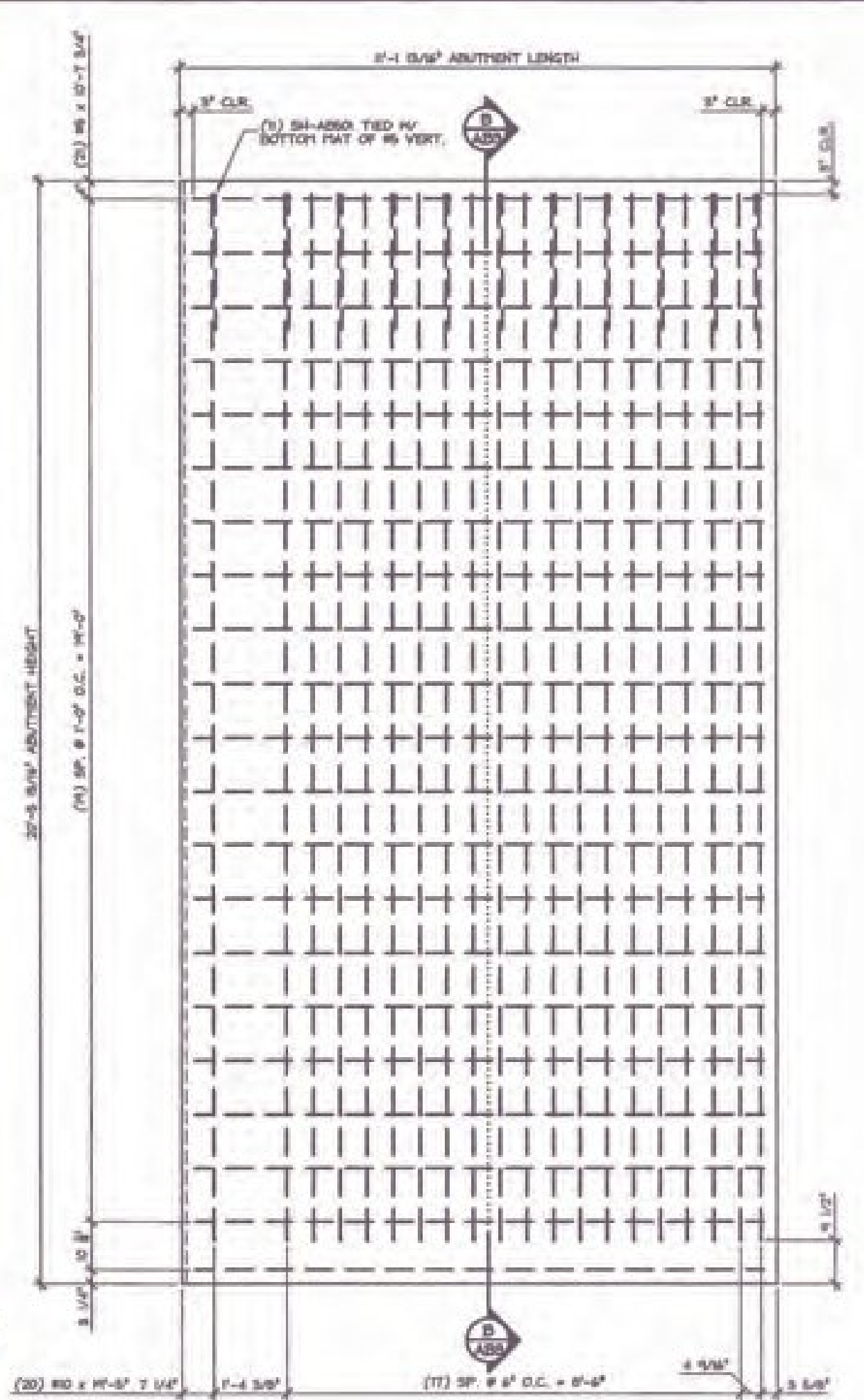
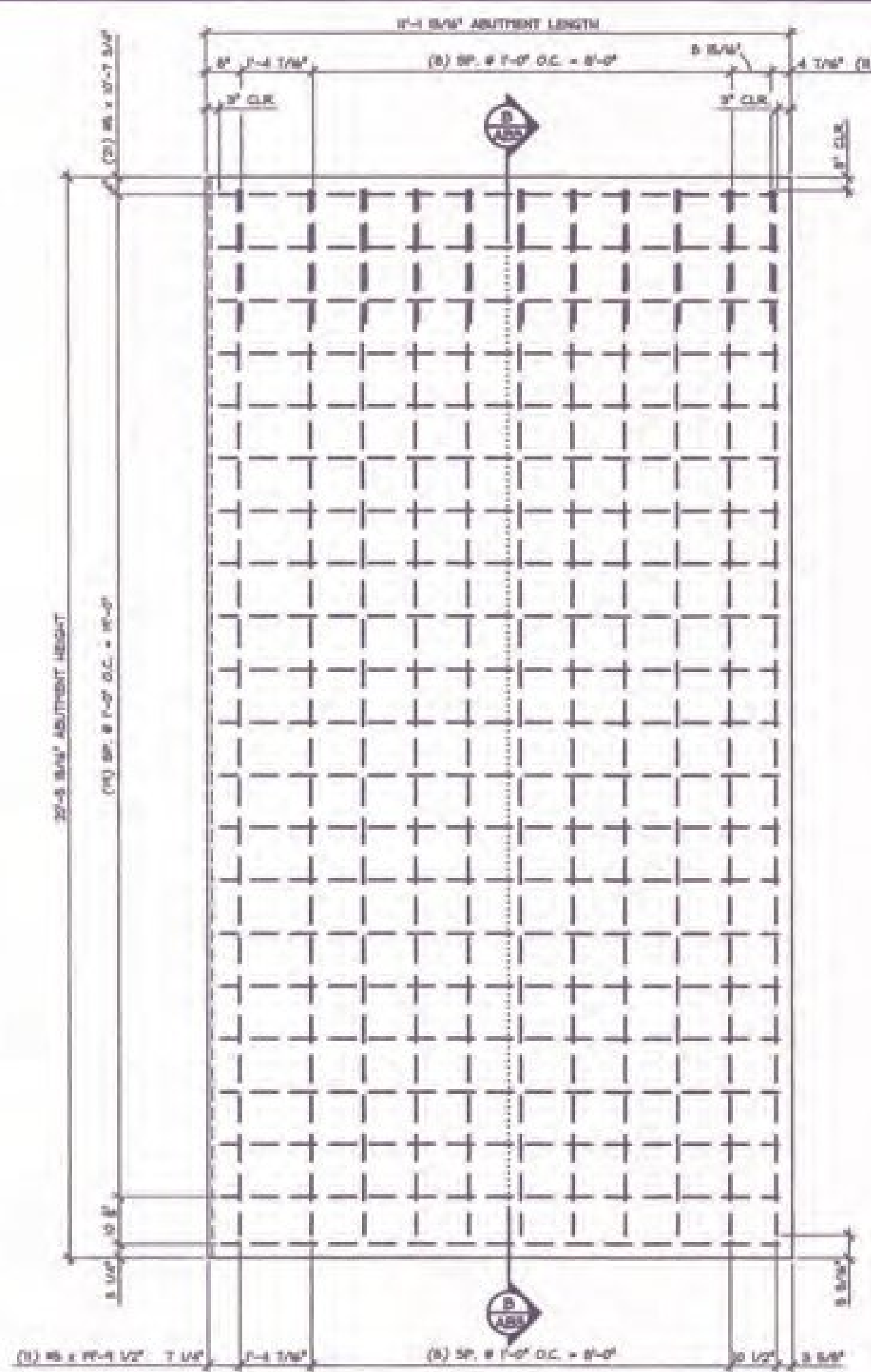


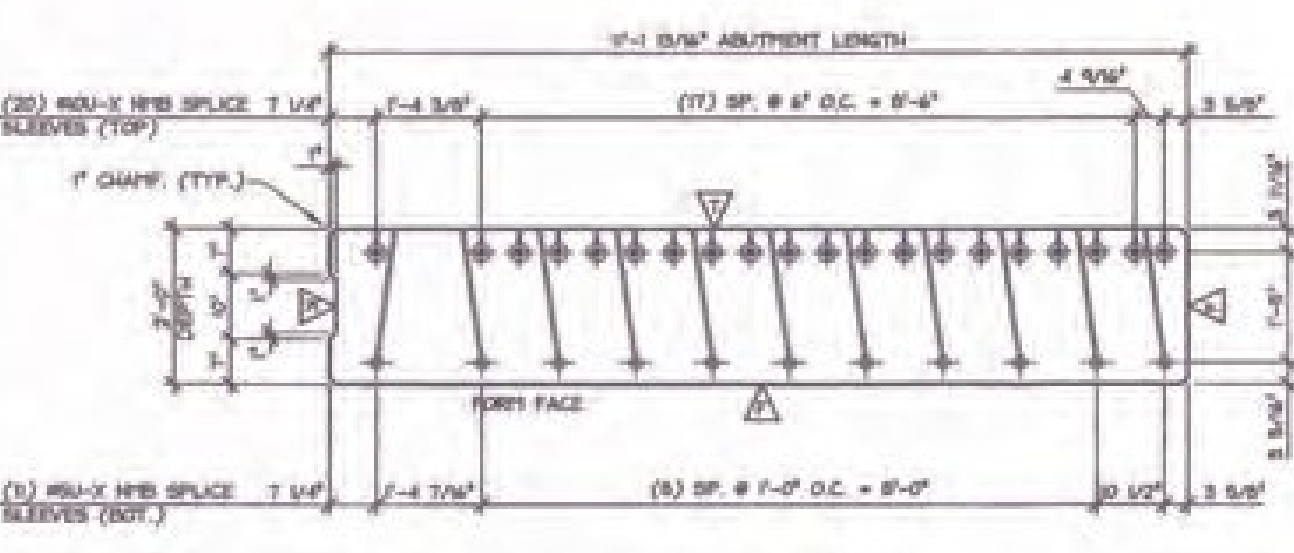
1 DIMENSIONAL PLAN VIEW IN FORM
1/2" = 1'-0"



2 REINFORCING PLAN VIEW IN FORM (TOP MAT)
1/2" = 1'-0"

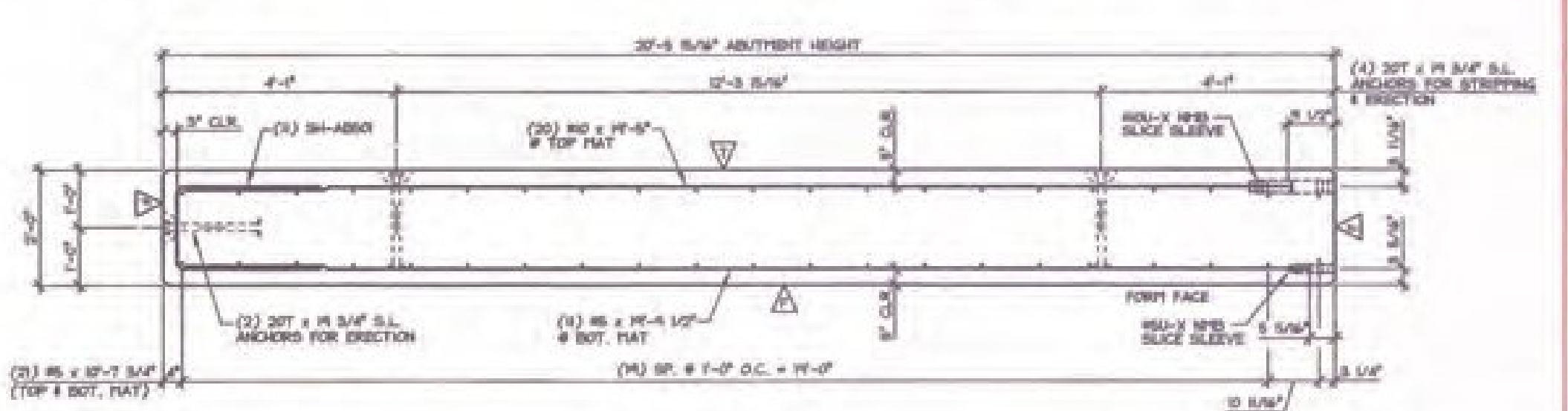


3 REINFORCING PLAN VIEW IN FORM (BOT. MAT)
1/2" = 1'-0"

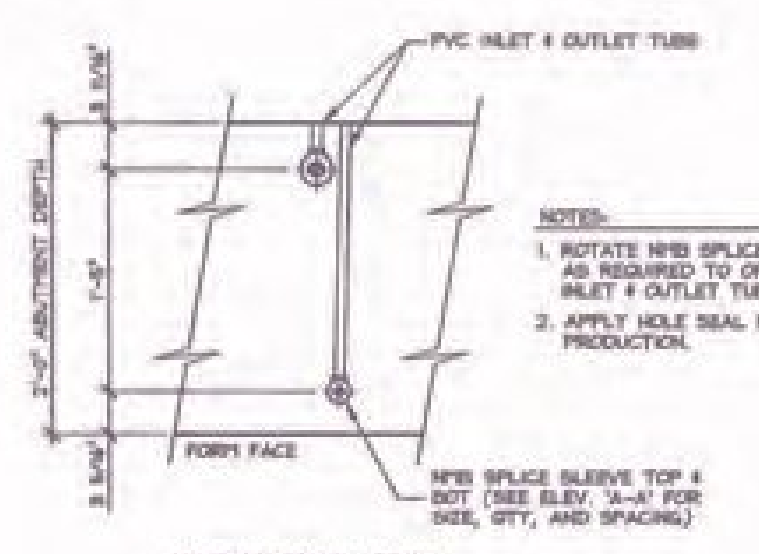


A DIMENSIONAL ELEVATION A-A
1/2" = 1'-0"

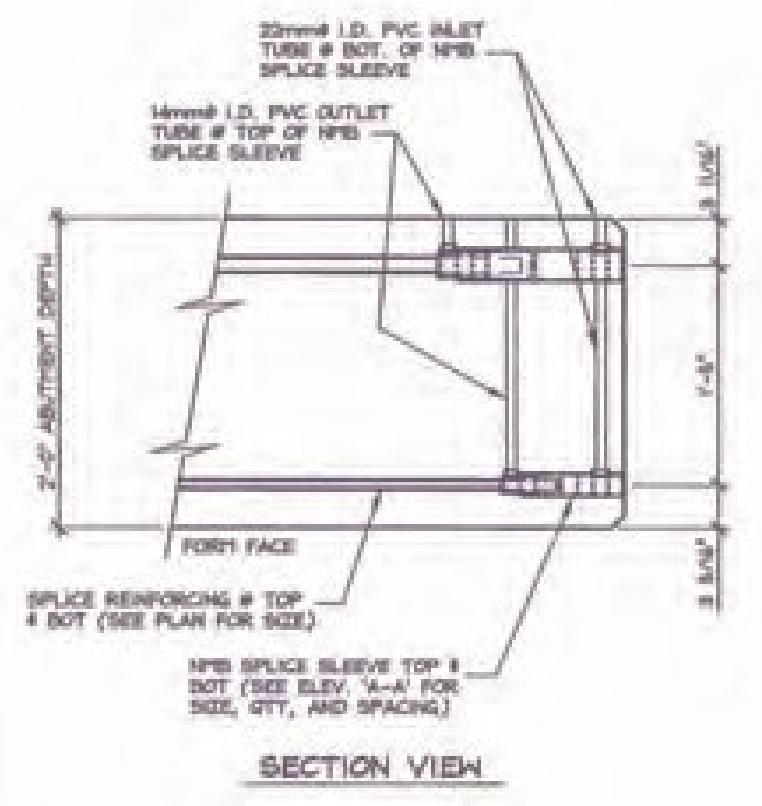
▲ = FLOAT FINISH
▲ = BLAST FINISH
▲ = FORM FINISH



B DIMENSIONAL REINFORCING SECTION B-B
1/2" = 1'-0"



ELEVATION VIEW



SECTION VIEW

C NMB SPLICE SLEEVE DETAILS

VERMONT AGENCY OF TRANSPORTATION
RECEIVED
ON: January 28, 2014
and Checked for
CONFORMANCE
BY: Jennifer Fish DATE: 02/04/2014

SUBMITTED
JAN 27 2014
J.P. CARRARA & SONS INC.
MIDDLEBURY, VT 05753
3000 PSI @ RELEASE
3000 PSI @ 28 DAYS
PEX DESIGN - 48PSCC

SHOP DRAWING REVIEW
VHB
VERMONT HIGHWAY BUILDING
1315 SOUTH
MIDDLEBURY, VT 05753
802.249.8800

MARK-SHAB-3 QTY: 1 WT.: 34.19 T VOL.: 16.88 cy

| MATERIAL LIST / ABUTMENT | | | |
|--------------------------|-----------------|--|------|
| ITEM | MARK | DESCRIPTION | QTY. |
| 1 | 86 x 19-1/2" | (BLACK) | 30 |
| 2 | 86 x 19-1/2" | (BLACK) | 8 |
| 3 | 86 x 19-1/2" | (BLACK) | 42 |
| 4 | | | |
| 5 | | | |
| 6 | 3/4" x 19-1/2" | INSERT (GALV.) | 5 |
| 7 | 86 x 19-1/2" | SPLICE SLEEVE (BLACK) | 8 |
| 8 | 86 x 19-1/2" | SPLICE SLEEVE (BLACK) | 30 |
| 9 | | | |
| 10 | | | |
| 11 | DAYTON 20T 1/4" | SHIFTS LIFT (BLACK) (WITH RECESS PLUG) | 4 |
| 12 | SH-AB50 | 86 BENT BAR (BLACK) | 8 |
| 13 | | | |
| 14 | | | |
| 15 | | | |

APPROVAL STAMP:

J.P. CARRARA & SONS INC.
Precast & Prestress Manufacturer
200 DE GRASSI DRIVE, VERMONT 05753 Phone: (802) 249-8800 Fax: (802) 249-8810

STATE OF VERMONT AGENCY OF TRANSPORTATION
COUNTY OF ADDISON

TOWN OF MIDDLEBURY
ROUTE NO. VT 125, EAST MIDDLEBURY GORGE
BRIDGE NO. 13 PROJECT NO. RS 0174(b)

T. BUCK CONSTRUCTION
CONTRACTOR
AUBURN, MAINE

DATE: OCT. 9, 2013
SCALE: NOTED
CHKD: DFTM: T.D.
JOB NO: 25411-03
DWG. NO: AB3

P/C ABUTMENT DETAILS

1/21/14 GENERAL REVISION T.D.
1/19/14 GENERAL REVISION T.D.